



Bonanza Creek Energy

Production Post Job Report

State Antelope T34-2-14XRLNB

S:11 T:5N R:62W Weld CO

Quote #:

I Execution #:



Bonanza Creek Energy

Attention: Mr. Joel Dill | (720) 633-5871 | JDill@bonanzacrk.com

Bonanza Creek Energy | 410 17th St Suite 1400 | Denver, CO. 80202

Dear Mr. Joel Dill,

Thank you for the opportunity to provide cementing services on this well. BJ Services strives to achieve complete customer satisfaction. If you have any questions regarding the services or data provided, please contact BJ Services at any time.

Sincerely,
Jacob Ojeda
Field Engineer I | (763) 516-3012 | jacob.ojeda@bjservices.com

Field Office 1716 East Allison Rd., Cheyenne WY, 82007
Phone: (307) 638-5585

Sales Office 999 18th St. Suite 1200 Denver, CO 80202
Phone: (281) 408-2361

Cementing Treatment



Start Date	8/19/2018	Well	STATE ANTELOPE T34-2-14XRLNB
End Date	8/19/2018	API#	05-123-46745
Client	BONANZA CREEK ENERGY	County	WELD
Client Field Rep.	Kenny	State/Province	CO
Service Sup.	Wesley Bell	Formation	NIOBRARA
District	Cheyenne, WY	Rig	Xtreme 19
Type of Job	Long String	Project ID	PRJ1009770
Execution ID	EXC-10003-T8W4Q602		

WELL GEOMETRY

Type	ID (in)	OD (in)	Wt. (lb/ft)	MD (ft)	TVD (ft)	Excess(%)
Previous Casing	8.92	9.63	36.00	1,624.00	1,550.00	
Open Hole	8.50	0.00	0.00	17,375.00	6,211.00	12.50
Casing	4.89	5.50	17.00	17,365.00	6,211.00	

Shoe Length (ft): 42.00

HARDWARE

Top Plug Used?	Yes	Landing Collar Depth (ft)	17,287
Top Plug Provided By	Non BJ	Max Casing Pressure - Rated (psi)	10,640.00
Top Plug Size	5.500	Max Casing Pressure - Operated (psi)	3,500.00
Centralizers Used	Yes	Pipe Movement	None
Centralizers Quantity	158.00	Top Connection Thread	LTC
Centralizers Type	Bow	Top Connection Size	5.5"

CIRCULATION PRIOR TO JOB

Well Circulated By	Rig	PV Mud Out	12
Circulation Prior to Job	Yes	YP Mud In	14
Circulation Time (min)	180.00	YP Mud Out	14
Circulation Rate (bpm)	8.50	Solids Present at End of Circulation	No
Circulation Volume (bbls)	1,530.00	10 sec SGS	6.00
Lost Circulation Prior to Cement Job	No	10 min SGS	8.00
Mud Density In (ppg)	9.40	30 min SGS	11.00
Mud Density Out (ppg)	9.40	Flare Prior to/during the Cement Job	No
PV Mud In	12	Gas Present	No

TEMPERATURE

Ambient Temperature (°F)	70.00	Slurry Cement Temperature (°F)	80.00
Mix Water Temperature (°F)	70.00	Flow Line Temperature (°F)	240.00

Cementing Treatment



BJ FLUID DETAILS

Fluid Type	Fluid Name	Density (ppg)	Yield (Cu Ft/sk)	H2O Req. (gals/sk)	Planned Top of Fluid (Ft)	Length (Ft)	Vol (sk)	Vol (Cu Ft)	Vol (bbls)
Spacer / Pre Flush / Flush	IntegraGuard EZ Spacer	12.0000			0.00				60.0000
Lead Slurry	BJCem P100.3.01C	12.5000	2.1538	12.23	0.00	5000	605	1,307.0000	239.8000
Tail Slurry	BJCem P50.6.02C	13.5000	1.4772	7.45	3,441.00	12329	2155	3,183.0000	567.3000
Displacement 2	Retarded Water	8.3337			13,244.00	0	0	0.0000	20.0000
Displacement Final	Displacement Final (Water)	8.3308			0.00			0.0000	381.9000

Fluid Type	Fluid Name	Component	Concentration	UOM
Spacer / Pre Flush / Flush	IntegraGuard EZ Spacer	SAND, S-8, Silica Flour, 200 Mesh	242.2100	PPB
Spacer / Pre Flush / Flush	IntegraGuard EZ Spacer	EXTENDER, BENTONITE	5.0000	PPB
Spacer / Pre Flush / Flush	IntegraGuard EZ Spacer	GELLANT WATER, GW-86	1.0000	PPB
Spacer / Pre Flush / Flush	IntegraGuard EZ Spacer	SPACER SURFACTANT, SS-247	0.5000	GPB
Spacer / Pre Flush / Flush	IntegraGuard EZ Spacer	SPACER SURFACTANT, SS-267	0.5000	GPB
Lead Slurry	BJCem P100.3.01C	RETARDER, SR-20	0.4000	BWOB
Lead Slurry	BJCem P100.3.01C	FOAM PREVENTER, FP-25	0.3000	BWOB
Lead Slurry	BJCem P100.3.01C	GELLANT WATER, GW-86	0.2000	BWOB
Lead Slurry	BJCem P100.3.01C	EXTENDER, BENTONITE	4.0000	BWOB
Lead Slurry	BJCem P100.3.01C	BONDING AGENT, BA-60	0.4000	BWOB
Lead Slurry	BJCem P100.3.01C	FLUID LOSS, FL-24	0.3000	BWOB
Lead Slurry	BJCem P100.3.01C	CEMENT, ASTM TYPE III	100.0000	PCT
Lead Slurry	BJCem P100.3.01C	IntegraSeal CELLO	0.1300	LBS/SK
Tail Slurry	BJCem P50.6.02C	RETARDER, SR-20	0.0700	BWOB
Tail Slurry	BJCem P50.6.02C	FOAM PREVENTER, FP-25	0.3000	BWOB
Tail Slurry	BJCem P50.6.02C	GELLANT WATER, GW-86	0.1000	BWOB
Tail Slurry	BJCem P50.6.02C	CEMENT, CLASS G	50.0000	PCT
Tail Slurry	BJCem P50.6.02C	EXTENDER, BENTONITE	2.0000	BWOB
Tail Slurry	BJCem P50.6.02C	FLUID LOSS, FL-66	0.2000	BWOB
Tail Slurry	BJCem P50.6.02C	Flyash (Rockies)	50.0000	PCT
Displacement 2	Retarded Water	RETARDER, R-8L	0.5000	GPB
Displacement 2	Retarded Water	BIOCIDE, BIOC11139W	0.0100	GPB
Displacement Final	Displacement Final (Water)	BIOCIDE, BIOC11139W	0.0100	GPB

Cementing Treatment



TREATMENT SUMMARY

Fluid	Rate (bpm)	Fluid Vol. (bbls)
IntegraGuard EZ Spacer	3.50	60.00
BJCem P100.3.01C	7.00	239.80
BJCem P50.6.02C	6.50	567.30
Retarded Water	5.00	20.00
Displacement Final (Water)	8.00	381.90

DISPLACEMENT AND END OF JOB SUMMARY

Displaced By	BJ	Amount of Cement Returned/Reversed	50.00
Calculated Displacement Volume (bbls)	401.90	Method Used to Verify Returns	Visual
Actual Displacement Volume (bbls)	400.00	Amount of Spacer to Surface	60.00
Did Float Hold?	Yes	Amount Bled Back After Job	4.50
Bump Plug	Yes	Total Volume Pumped (bbls)	1,269.00
Bump Plug Pressure (psi)	3,500.00	Top Out Cement Spotted	No
Were Returns Planned at Surface	Yes	Lost Circulation During Cement Job	No
Cement returns During Job	Full		

EVENT LOG



Customer Name: BONANZA CREEK ENERGY

Well Name: STATE ANTELOPE
T34-2-14XRLNB

Job Type: Long String

Quote ID: QUO-17014-V7W8V6

Plan ID: ORD-10003-T8W4Q6

District: Cheyenne, WY

Execution ID: EXC-10003-T8W4Q602

BJ Supervisor: Wesley Bell

Seq.	Start Dt./Time	Event	Density (ppg)	Pump Rate (bpm)	Pump Vol (bbls)	Pipe Pressure (psi)	Comments
1	08/19/2018 06:00	Arrive on Location					
2	08/19/2018 06:30	Rig Up					Rig in all BJ equipment
3	08/19/2018 08:00	Customer					Wait for rig to circulate 2bottoms up
4	08/19/2018 09:30	Safety Meeting					Hold STEACS briefing with rig crew and pump crew. review job procedures and job hazards
5	08/19/2018 10:56	Pressure Test	8.3400	2.00	2.00	5,200.00	Test all surface lines, good test
6	08/19/2018 11:08	Pump Spacer	12.0000	3.50	60.00	200.00	Pump 20bbls of spacer at 12ppg, 20bbls at 11.5ppg, 20bbls at 11ppg, 60bbls total.
7	08/19/2018 11:28	Pump Lead Cement	12.5000	6.60	239.00	300.00	Pump 239bbls of Lead cement at 12.5ppg, Y: 2.154, WR: 12.23, 605sk
8	08/19/2018 12:06	Pump Tail Cement	13.5000	6.50	567.00	450.00	Pump 567bbls of Tail cement at 13.5ppg, 2155sk, Y: 1.47, WR: 7.45. Top of Tail at 3441'
9	08/19/2018 13:51	Clean Pumps and Lines	8.3400				Clean pumps and lines to rig tank,
10	08/19/2018 14:01	Pump Displacement	8.3400	7.00	20.00	300.00	Drop latch down plug, begin displacement with R8L in first 20bbls
11	08/19/2018 14:18	Pump Displacement	8.3400	7.40	80.00	1,500.00	100bbls of displacement away
12	08/19/2018 14:31	Pump Displacement	8.3400	7.40	100.00	2,300.00	200bbls of displacement away
13	08/19/2018 14:38	Pump Displacement	8.3400	7.40	50.00	2,800.00	250bbls of displacement away divert returns to rig tanks.
14	08/19/2018 14:45	Pump Displacement	8.3400	7.40	50.00	2,700.00	300bbls of displacement away
15	08/19/2018 14:51	Pump Displacement	8.3400	7.40	50.00	2,700.00	350bbls of displacement away, cement to surface

EVENT LOG



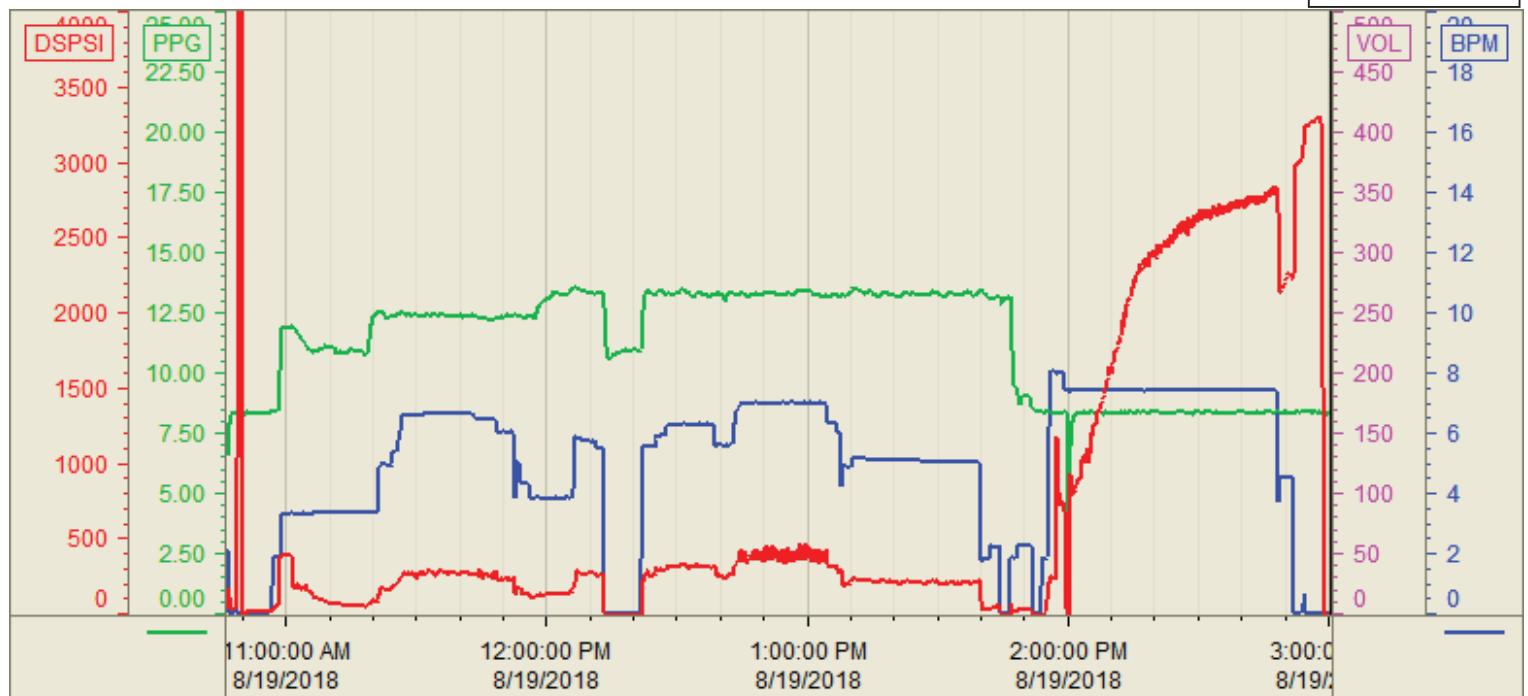
16	08/19/2018 14:57	Pump Displacement	8.3400	5.00	30.00	2,000.00	380bbls of displacement away, slow for last 20
17	08/19/2018 15:00	Land Plug	8.3400	5.00	20.00	2,300.00	400bbls of displacement away, bump pressure to 3500psi
18	08/19/2018 15:07	Check Floats	8.3400				Check floats, 4.5bbls back to truck.
19	08/19/2018 15:10	Rig Down					Rig out all BJ equipment
20	08/19/2018 16:45	Leave Location					

Customer: Bonanza Creek
Well Number: T34-2-14XRLNB
Lease Info: State Antelope



Print Date/Time

8/19/2018 3:45:36 PM



	Name	Y value	X value/time stamp	Tag name Y
1	PS - Press(PSI)	-12 i.	8/19/2018 3:00:30 PM i.	Cementer\PS_DISCHARGE_PRESS_DIAL
2	DH - Density (PPG)	8.28	8/19/2018 3:00:32 PM	Cementer\DENSITY2_ACTUAL_RATE
3	Combined rate (BPM)	0.00	8/19/2018 3:00:32 PM	Cementer\Flow_Combined
4				
5				

Source: Control1 3:45:30 PM