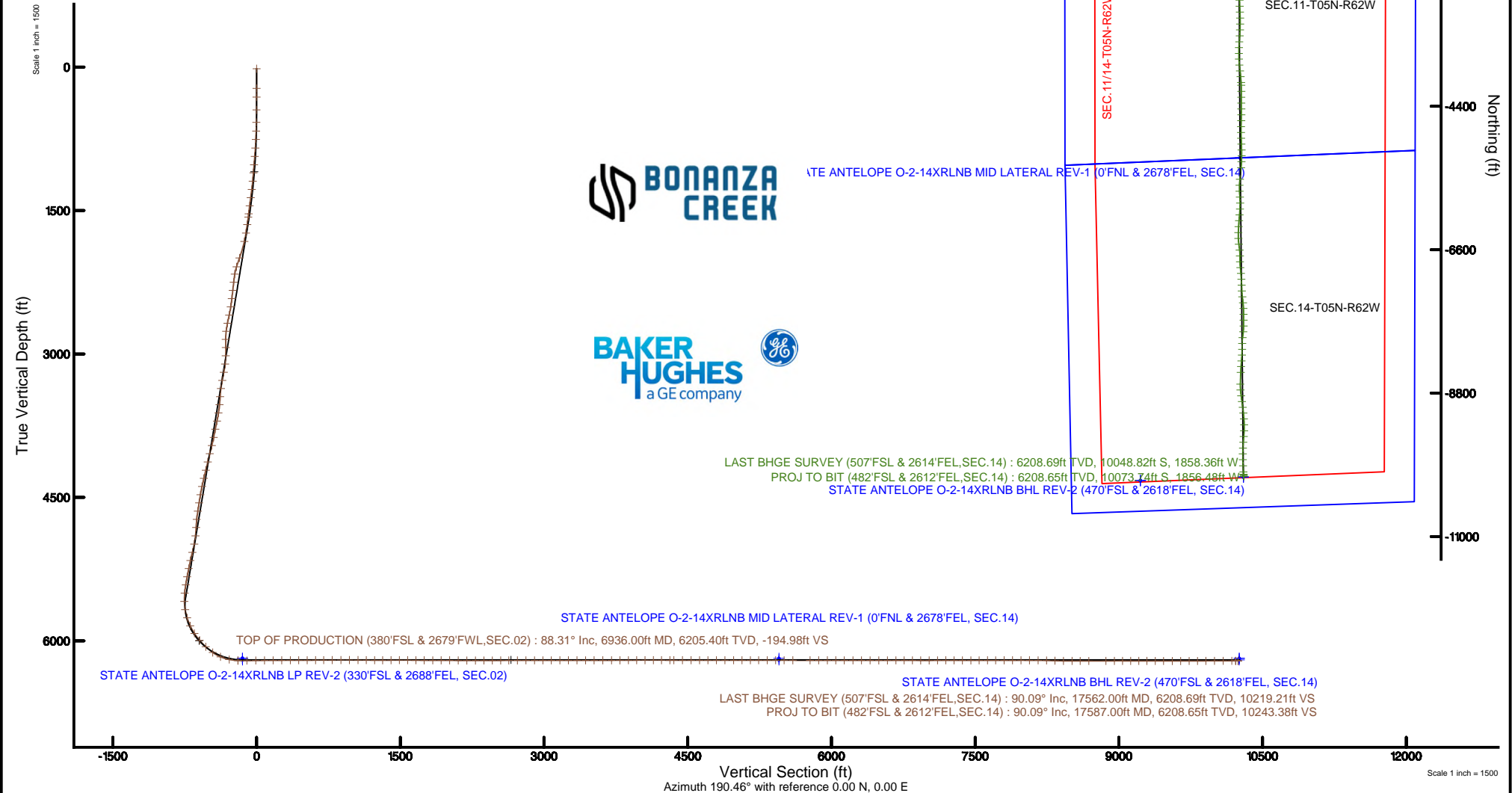


# BONANZA CREEK OIL COMPANY

Location: COLORADO Slot: SLOT#01 STATE ANTELOPE O-2-14XRLNB (270°FNL & 779°FEL, SEC.11)  
 Field: WELD COUNTY Well: STATE ANTELOPE O-2-14XRLNB  
 Facility: SEC.11-T05N-R62W Wellbore: STATE ANTELOPE O-2-14XRLNB PWB

Plot reference wellpath is STATE ANTELOPE O-2-14XRLNB PWP (REV-C.0)	
True vertical depths are referenced to RIG (17KB) (RKB)	Grid System: NAD83 / Lambert Colorado SP, Northern Zone (SP1), US feet
Measured depths are referenced to RIG (17KB) (RKB)	North Reference: True north
RIG (17KB) (RKB) to Mean Sea Level: 4653 feet	Scale: True distance
Mean Sea Level to Ground level (At Slot: SLOT#01 STATE ANTELOPE O-2-14XRLNB (270°FNL & 779°FEL, SEC.11)): 0 feet	Depths are in feet
Coordinates are in feet referenced to Slot	Created by: bushamh on 2018-11-01
	Database: Denver





# Actual Wellpath Report

## STATE ANTELOPE O-2-14XRLNB AWP

Page 1 of 11



REFERENCE WELLPATH IDENTIFICATION			
Operator	BONANZA CREEK OIL COMPANY	Slot	SLOT#01 STATE ANTELOPE O-2-14XRLNB (270'FNL & 779'FEL, SEC.11)
Area	COLORADO	Well	STATE ANTELOPE O-2-14XRLNB
Field	WELD COUNTY	Wellbore	STATE ANTELOPE O-2-14XRLNB AWB
Facility	SEC.11-T05N-R62W		

REPORT SETUP INFORMATION			
Projection System	NAD83 / Lambert Colorado SP, Northern Zone (501), US feet	Software System	WellArchitect® 5.1
North Reference	True	User	Bushjamh
Scale	0.999961	Report Generated	11/1/2018 at 5:53:21 PM
Convergence at slot	0.79° East	Database/Source file	Denver/STATE_ANTELOPE_O-2-14XRLNB_AWP.xml

WELLPATH LOCATION						
	Local coordinates		Grid coordinates		Geographic coordinates	
	North[ft]	East[ft]	Easting[US ft]	Northing[US ft]	Latitude	Longitude
Slot Location	0.00	0.00	3338687.26	1398848.45	40°25'18.709"N	104°17'00.609"W
Facility Reference Pt			3338687.26	1398848.45	40°25'18.709"N	104°17'00.609"W
Field Reference Pt			3224525.77	1254425.87	40°01'44.400"N	104°41'53.556"W

WELLPATH DATUM			
Calculation method	Minimum curvature	RIG (17'KB) (RKB) to Facility Vertical Datum	4653.00ft
Horizontal Reference Pt	Slot	RIG (17'KB) (RKB) to Mean Sea Level	4653.00ft
Vertical Reference Pt	RIG (17'KB) (RKB)	RIG (17'KB) (RKB) to Ground Level at Slot (SLOT#01 STATE ANTELOPE O-2-14XRLNB (270'FNL & 779'FEL, SEC.11))	4653.00ft
MD Reference Pt	RIG (17'KB) (RKB)	Section Origin	N 0.00, E 0.00 ft
Field Vertical Reference	Mean Sea Level	Section Azimuth	190.46°



# Actual Wellpath Report

## STATE ANTELOPE O-2-14XRLNB AWP

Page 2 of 11



REFERENCE WELLPATH IDENTIFICATION			
Operator	BONANZA CREEK OIL COMPANY	Slot	SLOT#01 STATE ANTELOPE O-2-14XRLNB (270'FNL & 779'FEL, SEC.11)
Area	COLORADO	Well	STATE ANTELOPE O-2-14XRLNB
Field	WELD COUNTY	Wellbore	STATE ANTELOPE O-2-14XRLNB AWB
Facility	SEC.11-T05N-R62W		

WELLPATH DATA (192 stations) † = interpolated/extrapolated station										
MD [ft]	Inclination [°]	Azimuth [°]	TVD [ft]	Vert Sect [ft]	North [ft]	East [ft]	Latitude	Longitude	DLS [°/100ft]	Comments
0.00†	0.000	85.080	0.00	0.00	0.00	0.00	40°25'18.709"N	104°17'00.609"W	0.00	
17.00	0.000	85.080	17.00	0.00	0.00	0.00	40°25'18.709"N	104°17'00.609"W	0.00	
223.00	0.470	85.080	223.00	-0.22	0.07	0.84	40°25'18.710"N	104°17'00.598"W	0.23	
314.00	0.440	82.830	313.99	-0.43	0.15	1.56	40°25'18.710"N	104°17'00.589"W	0.04	
448.00	0.700	66.140	447.99	-1.05	0.54	2.82	40°25'18.714"N	104°17'00.573"W	0.23	
578.00	1.800	313.680	577.97	-2.61	2.27	2.07	40°25'18.731"N	104°17'00.582"W	1.67	
669.00	3.650	308.380	668.86	-4.75	5.06	-1.24	40°25'18.759"N	104°17'00.625"W	2.05	
757.00	6.200	304.900	756.53	-8.03	9.52	-7.33	40°25'18.803"N	104°17'00.704"W	2.92	
848.00	9.280	304.320	846.69	-13.03	16.47	-17.42	40°25'18.872"N	104°17'00.834"W	3.39	
937.00	12.340	303.070	934.10	-19.59	25.71	-31.32	40°25'18.963"N	104°17'01.014"W	3.45	
1027.00	13.730	299.210	1021.78	-26.72	36.17	-48.70	40°25'19.066"N	104°17'01.239"W	1.82	
1113.00	13.150	299.470	1105.42	-33.19	45.96	-66.13	40°25'19.163"N	104°17'01.464"W	0.68	
1203.00	14.760	301.210	1192.76	-40.59	56.94	-84.85	40°25'19.272"N	104°17'01.706"W	1.85	
1293.00	17.610	304.170	1279.19	-50.12	70.53	-105.92	40°25'19.406"N	104°17'01.979"W	3.30	
1384.00	18.980	303.170	1365.59	-61.37	86.36	-129.70	40°25'19.562"N	104°17'02.286"W	1.54	
1473.00	17.710	304.210	1450.06	-72.41	101.89	-153.01	40°25'19.716"N	104°17'02.587"W	1.47	
1562.00	17.250	303.590	1534.95	-83.05	116.80	-175.20	40°25'19.863"N	104°17'02.874"W	0.56	
1597.00	18.100	304.000	1568.30	-87.26	122.71	-184.03	40°25'19.922"N	104°17'02.988"W	2.45	
1680.00	19.270	303.830	1646.93	-97.84	137.55	-206.10	40°25'20.068"N	104°17'03.274"W	1.41	
1774.00	19.370	306.060	1735.63	-110.72	155.36	-231.58	40°25'20.244"N	104°17'03.603"W	0.79	
1868.00	21.570	317.690	1823.73	-127.92	177.32	-255.83	40°25'20.461"N	104°17'03.917"W	4.91	
2056.00	26.160	326.380	1995.66	-178.64	237.44	-302.08	40°25'21.055"N	104°17'04.515"W	3.07	
2160.00	27.030	318.440	2088.69	-209.66	274.23	-330.46	40°25'21.419"N	104°17'04.882"W	3.52	
2244.00	25.480	300.340	2164.14	-227.58	297.67	-358.76	40°25'21.650"N	104°17'05.248"W	9.67	
2338.00	24.560	294.730	2249.33	-239.27	316.06	-393.96	40°25'21.832"N	104°17'05.703"W	2.71	
2432.00	24.610	294.070	2334.81	-248.69	332.22	-429.57	40°25'21.992"N	104°17'06.163"W	0.30	
2527.00	24.120	296.140	2421.35	-258.59	348.84	-465.06	40°25'22.156"N	104°17'06.622"W	1.04	
2621.00	23.640	300.390	2507.31	-270.21	366.84	-498.56	40°25'22.334"N	104°17'07.055"W	1.90	
2715.00	24.550	309.300	2593.15	-286.06	388.75	-529.94	40°25'22.550"N	104°17'07.461"W	3.99	
2809.00	25.370	304.930	2678.37	-303.82	412.65	-561.57	40°25'22.787"N	104°17'07.870"W	2.15	



# Actual Wellpath Report

## STATE ANTELOPE O-2-14XRLNB AWP

Page 3 of 11



REFERENCE WELLPATH IDENTIFICATION			
Operator	BONANZA CREEK OIL COMPANY	Slot	SLOT#01 STATE ANTELOPE O-2-14XRLNB (270'FNL & 779'FEL, SEC.11)
Area	COLORADO	Well	STATE ANTELOPE O-2-14XRLNB
Field	WELD COUNTY	Wellbore	STATE ANTELOPE O-2-14XRLNB AWB
Facility	SEC.11-T05N-R62W		

WELLPATH DATA (192 stations)										
MD [ft]	Inclination [°]	Azimuth [°]	TVD [ft]	Vert Sect [ft]	North [ft]	East [ft]	Latitude	Longitude	DLS [°/100ft]	Comments
2903.00	26.640	295.290	2762.89	-317.56	433.19	-597.15	40°25'22.990"N	104°17'08.330"W	4.69	
2996.00	24.120	279.340	2847.01	-322.53	445.20	-634.80	40°25'23.108"N	104°17'08.817"W	7.81	
3090.00	23.780	278.070	2932.92	-321.36	450.98	-672.52	40°25'23.165"N	104°17'09.305"W	0.66	
3184.00	23.470	285.130	3019.06	-322.10	458.52	-709.36	40°25'23.240"N	104°17'09.781"W	3.03	
3278.00	22.870	296.100	3105.52	-328.55	471.45	-743.85	40°25'23.368"N	104°17'10.227"W	4.63	
3372.00	24.430	307.210	3191.66	-342.23	491.25	-775.75	40°25'23.563"N	104°17'10.639"W	5.02	
3465.00	25.310	303.910	3276.04	-358.79	513.98	-807.57	40°25'23.788"N	104°17'11.051"W	1.77	
3559.00	25.300	296.880	3361.04	-372.47	534.27	-842.17	40°25'23.988"N	104°17'11.498"W	3.20	
3653.00	24.770	288.060	3446.24	-380.75	549.46	-878.82	40°25'24.138"N	104°17'11.972"W	4.01	
3746.00	24.710	291.980	3530.71	-387.21	562.78	-915.37	40°25'24.270"N	104°17'12.445"W	1.76	
3840.00	24.490	300.390	3616.20	-397.78	579.99	-950.41	40°25'24.440"N	104°17'12.898"W	3.73	
3934.00	24.840	308.010	3701.65	-413.56	602.02	-982.78	40°25'24.658"N	104°17'13.316"W	3.40	
4027.00	24.920	306.350	3786.02	-431.15	625.66	-1013.95	40°25'24.891"N	104°17'13.719"W	0.76	
4122.00	23.980	305.450	3872.50	-448.04	648.72	-1045.79	40°25'25.119"N	104°17'14.131"W	1.06	
4215.00	24.240	315.730	3957.42	-467.05	673.36	-1074.53	40°25'25.363"N	104°17'14.503"W	4.52	
4309.00	24.330	315.430	4043.10	-489.29	700.97	-1101.59	40°25'25.635"N	104°17'14.852"W	0.16	
4403.00	23.130	311.190	4129.16	-509.83	726.93	-1129.07	40°25'25.892"N	104°17'15.208"W	2.22	
4497.00	24.370	315.110	4215.21	-530.29	752.83	-1156.66	40°25'26.148"N	104°17'15.565"W	2.14	
4591.00	24.080	310.700	4300.93	-550.97	779.08	-1184.88	40°25'26.407"N	104°17'15.930"W	1.95	
4684.00	24.010	309.180	4385.87	-569.62	803.40	-1213.93	40°25'26.648"N	104°17'16.305"W	0.67	
4778.00	24.250	303.720	4471.66	-586.43	826.20	-1244.82	40°25'26.873"N	104°17'16.704"W	2.39	
4872.00	23.910	299.590	4557.49	-600.30	846.33	-1277.44	40°25'27.072"N	104°17'17.126"W	1.83	
4966.00	24.120	301.850	4643.35	-613.55	865.87	-1310.32	40°25'27.265"N	104°17'17.551"W	1.00	
5060.00	24.140	293.720	4729.16	-624.96	883.74	-1344.24	40°25'27.441"N	104°17'17.990"W	3.53	
5153.00	23.750	286.900	4814.18	-631.43	896.84	-1379.58	40°25'27.571"N	104°17'18.447"W	3.00	
5248.00	21.610	295.470	4901.85	-638.10	909.93	-1413.69	40°25'27.700"N	104°17'18.888"W	4.14	
5341.00	22.980	307.660	4987.94	-650.84	928.39	-1443.54	40°25'27.883"N	104°17'19.274"W	5.18	
5435.00	24.460	316.050	5074.02	-670.56	953.62	-1471.58	40°25'28.132"N	104°17'19.637"W	3.92	
5529.00	24.700	309.320	5159.52	-691.37	980.08	-1500.29	40°25'28.393"N	104°17'20.008"W	2.99	
5622.00	24.750	303.980	5244.01	-708.52	1003.28	-1531.47	40°25'28.623"N	104°17'20.411"W	2.40	



# Actual Wellpath Report

## STATE ANTELOPE O-2-14XRLNB AWP

Page 4 of 11



REFERENCE WELLPATH IDENTIFICATION			
Operator	BONANZA CREEK OIL COMPANY	Slot	SLOT#01 STATE ANTELOPE O-2-14XRLNB (270'FNL & 779'FEL, SEC.11)
Area	COLORADO	Well	STATE ANTELOPE O-2-14XRLNB
Field	WELD COUNTY	Wellbore	STATE ANTELOPE O-2-14XRLNB AWB
Facility	SEC.11-T05N-R62W		

WELLPATH DATA (192 stations)										
MD [ft]	Inclination [°]	Azimuth [°]	TVD [ft]	Vert Sect [ft]	North [ft]	East [ft]	Latitude	Longitude	DLS [°/100ft]	Comments
5716.00	24.450	306.440	5329.48	-724.89	1025.83	-1563.44	40°25'28.845"N	104°17'20.824"W	1.14	
5810.00	24.300	300.330	5415.11	-739.99	1047.16	-1595.79	40°25'29.056"N	104°17'21.243"W	2.69	
5904.00	23.680	293.110	5501.01	-750.70	1064.34	-1629.85	40°25'29.226"N	104°17'21.683"W	3.19	
5998.00	23.630	277.900	5587.19	-753.99	1074.35	-1665.91	40°25'29.325"N	104°17'22.149"W	6.48	
6092.00	24.170	257.320	5673.28	-745.57	1072.71	-1703.41	40°25'29.308"N	104°17'22.634"W	8.85	
6186.00	24.280	238.670	5759.13	-725.10	1058.41	-1738.74	40°25'29.167"N	104°17'23.091"W	8.11	
6280.00	29.530	224.840	5843.01	-693.05	1031.89	-1771.64	40°25'28.905"N	104°17'23.516"W	8.66	
6374.00	35.610	213.710	5922.26	-648.70	992.63	-1803.22	40°25'28.517"N	104°17'23.925"W	9.06	
6467.00	42.020	209.940	5994.70	-594.42	943.08	-1833.82	40°25'28.027"N	104°17'24.320"W	7.34	
6561.00	47.280	201.610	6061.61	-530.78	883.62	-1862.28	40°25'27.440"N	104°17'24.688"W	8.36	
6656.00	54.400	189.640	6121.69	-457.67	812.85	-1881.67	40°25'26.741"N	104°17'24.939"W	12.29	
6749.00	67.090	187.170	6167.05	-376.76	732.74	-1893.39	40°25'25.949"N	104°17'25.090"W	13.84	
6844.00	78.660	188.380	6194.98	-286.23	642.95	-1905.69	40°25'25.062"N	104°17'25.249"W	12.24	
6936.00	88.310	188.620	6205.40	-194.98	552.65	-1919.18	40°25'24.169"N	104°17'25.424"W	10.49	TOP OF PRODUCTION (380'FSL & 2679'FWL, SEC.02)
7030.00	90.590	184.150	6206.31	-101.25	459.27	-1929.63	40°25'23.247"N	104°17'25.559"W	5.34	
7124.00	90.650	179.430	6205.29	-8.36	365.35	-1932.57	40°25'22.318"N	104°17'25.597"W	5.02	
7218.00	90.430	174.980	6204.40	83.11	271.49	-1927.98	40°25'21.391"N	104°17'25.537"W	4.74	
7311.00	90.280	173.750	6203.83	172.46	178.94	-1918.85	40°25'20.476"N	104°17'25.419"W	1.33	
7405.00	90.370	175.500	6203.29	262.88	85.36	-1910.05	40°25'19.552"N	104°17'25.305"W	1.86	
7497.00	90.180	175.980	6202.85	351.86	-6.39	-1903.21	40°25'18.645"N	104°17'25.217"W	0.56	
7588.00	90.220	176.200	6202.53	440.01	-97.17	-1897.01	40°25'17.748"N	104°17'25.136"W	0.25	
7678.00	89.970	178.450	6202.38	527.65	-187.06	-1892.81	40°25'16.860"N	104°17'25.082"W	2.52	
7767.00	90.710	181.500	6201.86	615.15	-276.06	-1892.77	40°25'15.980"N	104°17'25.081"W	3.53	
7853.00	90.310	185.200	6201.09	700.47	-361.89	-1897.79	40°25'15.132"N	104°17'25.146"W	4.33	
7942.00	90.030	187.250	6200.83	789.23	-450.36	-1907.44	40°25'14.258"N	104°17'25.271"W	2.32	
8033.00	90.400	187.930	6200.48	880.11	-540.56	-1919.46	40°25'13.367"N	104°17'25.426"W	0.85	
8122.00	89.570	185.800	6200.51	968.93	-628.92	-1930.10	40°25'12.494"N	104°17'25.564"W	2.57	
8212.00	89.910	180.320	6200.92	1058.14	-718.76	-1934.90	40°25'11.606"N	104°17'25.626"W	6.10	
8301.00	89.450	174.430	6201.41	1144.79	-807.62	-1930.83	40°25'10.728"N	104°17'25.573"W	6.64	
8391.00	89.230	176.460	6202.45	1231.71	-897.33	-1923.68	40°25'09.841"N	104°17'25.480"W	2.27	



# Actual Wellpath Report

## STATE ANTELOPE O-2-14XRLNB AWP

Page 5 of 11



REFERENCE WELLPATH IDENTIFICATION			
Operator	BONANZA CREEK OIL COMPANY	Slot	SLOT#01 STATE ANTELOPE O-2-14XRLNB (270'FNL & 779'FEL, SEC.11)
Area	COLORADO	Well	STATE ANTELOPE O-2-14XRLNB
Field	WELD COUNTY	Wellbore	STATE ANTELOPE O-2-14XRLNB AWB
Facility	SEC.11-T05N-R62W		

WELLPATH DATA (192 stations)										
MD [ft]	Inclination [°]	Azimuth [°]	TVD [ft]	Vert Sect [ft]	North [ft]	East [ft]	Latitude	Longitude	DLS [°/100ft]	Comments
8477.00	90.060	180.100	6202.98	1315.76	-983.27	-1921.10	40°25'08.992"N	104°17'25.447"W	4.34	
8567.00	91.290	176.520	6201.92	1403.72	-1073.21	-1918.45	40°25'08.103"N	104°17'25.413"W	4.21	
8657.00	89.690	172.740	6201.15	1490.28	-1162.79	-1910.03	40°25'07.218"N	104°17'25.304"W	4.56	
8748.00	89.630	172.590	6201.69	1576.93	-1253.04	-1898.41	40°25'06.326"N	104°17'25.153"W	0.18	
8837.00	89.170	174.930	6202.63	1662.16	-1341.51	-1888.74	40°25'05.452"N	104°17'25.028"W	2.68	
8926.00	89.750	180.270	6203.47	1748.89	-1430.39	-1885.01	40°25'04.574"N	104°17'24.980"W	6.03	
9017.00	89.880	183.470	6203.76	1838.86	-1521.33	-1887.98	40°25'03.675"N	104°17'25.018"W	3.52	
9106.00	90.550	179.140	6203.43	1926.70	-1610.29	-1890.01	40°25'02.796"N	104°17'25.044"W	4.92	
9196.00	89.290	177.700	6203.55	2014.72	-1700.25	-1887.53	40°25'01.907"N	104°17'25.012"W	2.13	
9287.00	89.140	183.650	6204.80	2104.34	-1791.19	-1888.60	40°25'01.008"N	104°17'25.026"W	6.54	
9377.00	89.910	189.470	6205.55	2194.09	-1880.56	-1898.87	40°25'00.125"N	104°17'25.159"W	6.52	
9468.00	90.280	186.460	6205.39	2285.00	-1970.67	-1911.48	40°24'59.235"N	104°17'25.322"W	3.33	
9557.00	90.120	179.870	6205.08	2373.23	-2059.49	-1916.39	40°24'58.357"N	104°17'25.385"W	7.41	
9646.00	90.180	177.720	6204.85	2460.38	-2148.46	-1914.52	40°24'57.478"N	104°17'25.361"W	2.42	
9735.00	90.280	178.630	6204.49	2547.34	-2237.41	-1911.69	40°24'56.599"N	104°17'25.324"W	1.03	
9822.00	90.060	179.160	6204.23	2632.57	-2324.40	-1910.01	40°24'55.739"N	104°17'25.302"W	0.66	
9914.00	90.060	179.720	6204.14	2722.88	-2416.39	-1909.11	40°24'54.830"N	104°17'25.291"W	0.61	
10003.00	89.970	182.310	6204.12	2810.66	-2505.37	-1910.69	40°24'53.951"N	104°17'25.311"W	2.91	
10094.00	90.120	183.580	6204.04	2900.88	-2596.25	-1915.36	40°24'53.053"N	104°17'25.371"W	1.41	
10182.00	90.180	181.990	6203.81	2988.09	-2684.14	-1919.64	40°24'52.185"N	104°17'25.426"W	1.81	
10271.00	90.030	180.050	6203.65	3075.88	-2773.12	-1921.22	40°24'51.305"N	104°17'25.447"W	2.19	
10363.00	90.060	177.380	6203.58	3165.94	-2865.09	-1919.16	40°24'50.397"N	104°17'25.420"W	2.90	
10454.00	90.060	177.590	6203.48	3254.62	-2956.00	-1915.17	40°24'49.498"N	104°17'25.368"W	0.23	
10546.00	89.880	178.830	6203.53	3344.52	-3047.96	-1912.29	40°24'48.590"N	104°17'25.331"W	1.36	
10637.00	90.000	180.860	6203.63	3433.96	-3138.95	-1912.05	40°24'47.690"N	104°17'25.328"W	2.23	
10727.00	90.060	181.720	6203.58	3522.81	-3228.93	-1914.07	40°24'46.801"N	104°17'25.354"W	0.96	
10819.00	90.030	183.800	6203.51	3613.97	-3320.82	-1918.50	40°24'45.893"N	104°17'25.411"W	2.26	
10910.00	90.220	184.940	6203.31	3704.46	-3411.55	-1925.44	40°24'44.997"N	104°17'25.501"W	1.27	
10999.00	90.310	181.310	6202.90	3792.71	-3500.40	-1930.29	40°24'44.119"N	104°17'25.563"W	4.08	
11088.00	90.220	180.010	6202.48	3880.41	-3589.39	-1931.31	40°24'43.239"N	104°17'25.576"W	1.46	



# Actual Wellpath Report

## STATE ANTELOPE O-2-14XRLNB AWP

Page 6 of 11



REFERENCE WELLPATH IDENTIFICATION			
Operator	BONANZA CREEK OIL COMPANY	Slot	SLOT#01 STATE ANTELOPE O-2-14XRLNB (270'FNL & 779'FEL, SEC.11)
Area	COLORADO	Well	STATE ANTELOPE O-2-14XRLNB
Field	WELD COUNTY	Wellbore	STATE ANTELOPE O-2-14XRLNB AWB
Facility	SEC.11-T05N-R62W		

WELLPATH DATA (192 stations)										
MD [ft]	Inclination [°]	Azimuth [°]	TVD [ft]	Vert Sect [ft]	North [ft]	East [ft]	Latitude	Longitude	DLS [°/100ft]	Comments
11176.00	90.310	178.000	6202.08	3966.65	-3677.37	-1929.78	40°24'42.370"N	104°17'25.557"W	2.29	
11267.00	90.000	174.590	6201.83	4054.87	-3768.17	-1923.91	40°24'41.473"N	104°17'25.480"W	3.76	
11357.00	89.940	172.770	6201.88	4141.03	-3857.62	-1914.00	40°24'40.589"N	104°17'25.352"W	2.02	
11446.00	89.970	174.920	6201.95	4226.31	-3946.10	-1904.46	40°24'39.714"N	104°17'25.229"W	2.42	
11536.00	89.850	176.330	6202.09	4313.31	-4035.84	-1897.59	40°24'38.828"N	104°17'25.140"W	1.57	
11579.00	89.910	178.260	6202.18	4355.18	-4078.79	-1895.56	40°24'38.403"N	104°17'25.114"W	4.49	
11671.00	90.060	179.730	6202.20	4445.34	-4170.77	-1893.95	40°24'37.494"N	104°17'25.093"W	1.61	
11762.00	89.820	180.600	6202.30	4534.87	-4261.77	-1894.21	40°24'36.595"N	104°17'25.096"W	0.99	
11852.00	89.940	179.750	6202.49	4623.42	-4351.77	-1894.49	40°24'35.706"N	104°17'25.100"W	0.95	
11941.00	89.910	179.550	6202.60	4710.84	-4440.77	-1893.94	40°24'34.826"N	104°17'25.092"W	0.23	
12031.00	89.940	180.540	6202.72	4799.36	-4530.76	-1894.01	40°24'33.937"N	104°17'25.093"W	1.10	
12121.00	89.970	181.660	6202.79	4888.16	-4620.75	-1895.74	40°24'33.048"N	104°17'25.115"W	1.24	
12213.00	90.150	181.050	6202.70	4979.00	-4712.72	-1897.92	40°24'32.139"N	104°17'25.144"W	0.69	
12302.00	90.030	179.470	6202.56	5066.59	-4801.72	-1898.32	40°24'31.260"N	104°17'25.149"W	1.78	
12391.00	90.090	177.860	6202.46	5153.71	-4890.69	-1896.25	40°24'30.380"N	104°17'25.122"W	1.81	
12480.00	89.970	177.620	6202.42	5240.52	-4979.62	-1892.74	40°24'29.502"N	104°17'25.076"W	0.30	
12571.00	90.030	178.590	6202.42	5329.41	-5070.57	-1889.73	40°24'28.603"N	104°17'25.037"W	1.07	
12660.00	89.750	180.400	6202.59	5416.78	-5159.56	-1888.94	40°24'27.723"N	104°17'25.027"W	2.06	
12750.00	90.000	182.720	6202.78	5505.69	-5249.52	-1891.39	40°24'26.835"N	104°17'25.059"W	2.59	
12842.00	89.660	184.870	6203.06	5597.06	-5341.31	-1897.48	40°24'25.927"N	104°17'25.137"W	2.37	
13022.00	90.060	186.670	6203.50	5776.45	-5520.39	-1915.58	40°24'24.158"N	104°17'25.371"W	1.02	
13113.00	90.000	181.850	6203.45	5866.89	-5611.12	-1922.33	40°24'23.261"N	104°17'25.458"W	5.30	
13205.00	90.060	176.800	6203.40	5957.13	-5703.08	-1921.25	40°24'22.353"N	104°17'25.444"W	5.49	
13296.00	89.940	176.610	6203.40	6045.52	-5793.93	-1916.02	40°24'21.455"N	104°17'25.376"W	0.25	
13387.00	89.750	178.790	6203.65	6134.27	-5884.85	-1912.37	40°24'20.556"N	104°17'25.329"W	2.40	
13479.00	89.850	183.790	6203.97	6225.06	-5976.80	-1914.44	40°24'19.648"N	104°17'25.356"W	5.44	
13568.00	90.090	185.140	6204.02	6313.57	-6065.52	-1921.37	40°24'18.771"N	104°17'25.445"W	1.54	
13658.00	89.940	184.480	6203.99	6403.14	-6155.21	-1928.91	40°24'17.885"N	104°17'25.543"W	0.75	
13750.00	89.880	183.940	6204.14	6494.59	-6246.96	-1935.67	40°24'16.978"N	104°17'25.630"W	0.59	
13841.00	89.940	181.730	6204.28	6584.78	-6337.84	-1940.17	40°24'16.080"N	104°17'25.688"W	2.43	



# Actual Wellpath Report

## STATE ANTELOPE O-2-14XRLNB AWP

Page 7 of 11



REFERENCE WELLPATH IDENTIFICATION			
Operator	BONANZA CREEK OIL COMPANY	Slot	SLOT#01 STATE ANTELOPE O-2-14XRLNB (270'FNL & 779'FEL, SEC.11)
Area	COLORADO	Well	STATE ANTELOPE O-2-14XRLNB
Field	WELD COUNTY	Wellbore	STATE ANTELOPE O-2-14XRLNB AWB
Facility	SEC.11-T05N-R62W		

WELLPATH DATA (192 stations)										
MD [ft]	Inclination [°]	Azimuth [°]	TVD [ft]	Vert Sect [ft]	North [ft]	East [ft]	Latitude	Longitude	DLS [°/100ft]	Comments
13931.00	90.340	177.560	6204.06	6673.16	-6427.82	-1939.61	40°24'15.191"N	104°17'25.681"W	4.65	
14020.00	89.940	172.140	6203.84	6758.84	-6516.43	-1931.63	40°24'14.315"N	104°17'25.577"W	6.11	
14110.00	89.850	173.670	6204.01	6844.65	-6605.73	-1920.51	40°24'13.433"N	104°17'25.434"W	1.70	
14199.00	89.450	179.730	6204.55	6931.05	-6694.54	-1915.39	40°24'12.555"N	104°17'25.367"W	6.82	
14289.00	90.490	178.910	6204.60	7019.35	-6784.54	-1914.32	40°24'11.666"N	104°17'25.354"W	1.47	
14379.00	90.550	174.470	6203.78	7106.74	-6874.36	-1909.13	40°24'10.778"N	104°17'25.286"W	4.93	
14469.00	89.940	174.240	6203.40	7193.20	-6963.92	-1900.27	40°24'09.893"N	104°17'25.172"W	0.72	
14558.00	89.420	176.470	6203.89	7279.12	-7052.62	-1893.07	40°24'09.017"N	104°17'25.079"W	2.57	
14648.00	90.030	178.880	6204.33	7366.88	-7142.54	-1889.42	40°24'08.128"N	104°17'25.031"W	2.76	
14739.00	90.180	177.260	6204.16	7455.76	-7233.48	-1886.35	40°24'07.230"N	104°17'24.992"W	1.79	
14828.00	90.340	173.380	6203.75	7541.65	-7322.17	-1879.09	40°24'06.353"N	104°17'24.898"W	4.36	
14920.00	89.880	172.990	6203.58	7629.50	-7413.52	-1868.17	40°24'05.451"N	104°17'24.756"W	0.66	
15007.00	90.030	177.950	6203.65	7713.51	-7500.22	-1861.30	40°24'04.594"N	104°17'24.668"W	5.70	
15098.00	90.120	179.950	6203.53	7802.68	-7591.20	-1859.64	40°24'03.695"N	104°17'24.646"W	2.20	
15187.00	90.090	179.400	6203.36	7890.10	-7680.20	-1859.13	40°24'02.815"N	104°17'24.639"W	0.62	
15277.00	90.090	180.540	6203.22	7978.60	-7770.20	-1859.09	40°24'01.926"N	104°17'24.639"W	1.27	
15366.00	89.510	186.230	6203.53	8066.88	-7859.00	-1864.34	40°24'01.049"N	104°17'24.706"W	6.43	
15456.00	90.030	187.770	6203.89	8156.72	-7948.33	-1875.31	40°24'00.166"N	104°17'24.848"W	1.81	
15545.00	88.430	179.820	6205.09	8245.03	-8037.05	-1881.19	40°23'59.289"N	104°17'24.924"W	9.11	
15635.00	88.060	180.900	6207.85	8333.59	-8127.01	-1881.76	40°23'58.400"N	104°17'24.931"W	1.27	
15724.00	89.780	183.150	6209.53	8421.61	-8215.93	-1884.90	40°23'57.522"N	104°17'24.972"W	3.18	
15814.00	89.850	185.300	6209.82	8511.07	-8305.68	-1891.53	40°23'56.635"N	104°17'25.057"W	2.39	
15900.00	89.940	183.530	6209.97	8596.59	-8391.42	-1898.15	40°23'55.787"N	104°17'25.143"W	2.06	
15990.00	89.970	182.350	6210.05	8685.81	-8481.30	-1902.77	40°23'54.899"N	104°17'25.202"W	1.31	
16171.00	90.220	181.620	6209.75	8864.83	-8662.19	-1909.04	40°23'53.112"N	104°17'25.283"W	0.43	
16261.00	90.090	174.880	6209.50	8952.74	-8752.09	-1906.29	40°23'52.223"N	104°17'25.248"W	7.49	
16350.00	89.940	172.360	6209.48	9037.92	-8840.53	-1896.40	40°23'51.349"N	104°17'25.120"W	2.84	
16440.00	90.000	172.300	6209.53	9123.45	-8929.73	-1884.39	40°23'50.468"N	104°17'24.965"W	0.09	
16529.00	89.940	172.550	6209.57	9208.08	-9017.95	-1872.66	40°23'49.596"N	104°17'24.813"W	0.29	
16618.00	89.820	173.760	6209.76	9293.05	-9106.32	-1862.05	40°23'48.723"N	104°17'24.676"W	1.37	



# Actual Wellpath Report

## STATE ANTELOPE O-2-14XRLNB AWP

Page 8 of 11



REFERENCE WELLPATH IDENTIFICATION			
Operator	BONANZA CREEK OIL COMPANY	Slot	SLOT#01 STATE ANTELOPE O-2-14XRLNB (270'FNL & 779'FEL, SEC.11)
Area	COLORADO	Well	STATE ANTELOPE O-2-14XRLNB
Field	WELD COUNTY	Wellbore	STATE ANTELOPE O-2-14XRLNB AWB
Facility	SEC.11-T05N-R62W		

WELLPATH DATA (192 stations)										
MD [ft]	Inclination [°]	Azimuth [°]	TVD [ft]	Vert Sect [ft]	North [ft]	East [ft]	Latitude	Longitude	DLS [°/100ft]	Comments
16708.00	89.880	176.040	6209.99	9379.74	-9195.95	-1854.05	40°23'47.837"N	104°17'24.572"W	2.53	
16797.00	89.720	179.070	6210.30	9466.48	-9284.86	-1850.25	40°23'46.959"N	104°17'24.523"W	3.41	
16889.00	90.000	182.380	6210.53	9557.14	-9376.84	-1851.42	40°23'46.050"N	104°17'24.538"W	3.61	
16977.00	90.060	184.560	6210.48	9644.48	-9464.67	-1856.74	40°23'45.182"N	104°17'24.607"W	2.48	
17066.00	90.250	184.270	6210.24	9732.99	-9553.41	-1863.59	40°23'44.305"N	104°17'24.695"W	0.39	
17155.00	90.090	182.790	6209.98	9821.33	-9642.24	-1869.07	40°23'43.427"N	104°17'24.766"W	1.67	
17243.00	90.460	180.320	6209.56	9908.26	-9730.20	-1871.46	40°23'42.558"N	104°17'24.797"W	2.84	
17334.00	90.120	178.890	6209.10	9997.63	-9821.19	-1870.83	40°23'41.659"N	104°17'24.788"W	1.62	
17428.00	90.150	176.940	6208.87	10089.38	-9915.12	-1867.42	40°23'40.731"N	104°17'24.744"W	2.07	
17521.00	90.030	175.700	6208.73	10179.56	-10007.93	-1861.45	40°23'39.814"N	104°17'24.667"W	1.34	
17562.00	90.090	175.680	6208.69	10219.21	-10048.82	-1858.36	40°23'39.410"N	104°17'24.627"W	0.15	LAST BHGE SURVEY (507'FSL & 2614'FEL, SEC.14)
17587.00	90.090	175.680	6208.65	10243.38	-10073.74	-1856.48	40°23'39.163"N	104°17'24.603"W	0.00	PROJ TO BIT (482'FSL & 2612'FEL, SEC.14)



# Actual Wellpath Report

## STATE ANTELOPE O-2-14XRLNB AWP

Page 9 of 11



REFERENCE WELLPATH IDENTIFICATION			
Operator	BONANZA CREEK OIL COMPANY	Slot	SLOT#01 STATE ANTELOPE O-2-14XRLNB (270'FNL & 779'FEL, SEC.11)
Area	COLORADO	Well	STATE ANTELOPE O-2-14XRLNB
Field	WELD COUNTY	Wellbore	STATE ANTELOPE O-2-14XRLNB AWB
Facility	SEC.11-T05N-R62W		

TARGETS								
Name	TVD [ft]	North [ft]	East [ft]	Grid East [US ft]	Grid North [US ft]	Latitude	Longitude	Shape
SEC.02-T05N-R62W	29.00	4030.19	-4269.44	3334363.11	1402819.53	40°25'58.530"N	104°17'55.820"W	polygon
SEC.11-T05N-R62W	29.00	-10140.51	-3439.74	3335387.09	1388662.13	40°23'38.502"N	104°17'45.065"W	polygon
SEC.14-T05N-R62W	29.00	-10140.51	-3439.74	3335387.09	1388662.13	40°23'38.502"N	104°17'45.065"W	polygon
STATE ANTELOPE O-2-14XRLNB BHL (470'FSL&2618'FEL,SEC.14)	6183.00	-10085.75	-1862.16	3336963.70	1388738.52	40°23'39.045"N	104°17'24.676"W	point
STATE ANTELOPE O-2-14XRLNB BHL REV-1 (470'FSL & 2618'FEL, SEC.14)	6183.00	-10085.74	-1862.27	3336963.59	1388738.53	<b>40°23'39.045"N</b>	<b>104°17'24.678"W</b>	point
STATE ANTELOPE O-2-14XRLNB LP (330'FSL&2688'FEL,SEC.02)	6183.00	503.33	-1910.85	3336769.77	1399325.51	40°25'23.682"N	104°17'25.316"W	point
STATE ANTELOPE O-2-14XRLNB LP REV-1 (330'FSL & 2688'FEL, SEC.02)	6183.00	502.79	-1910.95	3336769.67	1399324.96	<b>40°25'23.677"N</b>	<b>104°17'25.317"W</b>	point
STATE ANTELOPE O-2-14XRLNB MID LATERAL (0'FNL & 2678'FEL, SEC.14)	6183.00	-5191.24	-1911.22	3336847.51	1393631.69	<b>40°24'27.410"N</b>	<b>104°17'25.315"W</b>	point
STATE ANTELOPE O-2-14XRLNB BHL REV-2 (470'FSL & 2618'FEL, SEC.14)	6199.00	-10085.72	-1862.31	3336963.55	1388738.55	<b>40°23'39.045"N</b>	<b>104°17'24.678"W</b>	point
STATE ANTELOPE O-2-14XRLNB LP REV-2 (330'FSL & 2688'FEL, SEC.02)	6199.00	502.83	-1910.93	3336769.69	1399325.00	<b>40°25'23.677"N</b>	<b>104°17'25.317"W</b>	point
STATE ANTELOPE O-2-14XRLNB MID LATERAL REV-1 (0'FNL & 2678'FEL, SEC.14)	6199.00	-5191.28	-1911.22	3336847.51	1393631.65	<b>40°24'27.410"N</b>	<b>104°17'25.315"W</b>	point
SEC.11/14-T05N-R62W HARDLINES (460'SETBACK)	6213.00	-10140.51	-3439.74	3335387.09	1388662.13	40°23'38.502"N	104°17'45.065"W	polygon



# Actual Wellpath Report

STATE ANTELOPE O-2-14XRLNB AWP  
Page 10 of 11



REFERENCE WELLPATH IDENTIFICATION			
Operator	BONANZA CREEK OIL COMPANY	Slot	SLOT#01 STATE ANTELOPE O-2-14XRLNB (270'FNL & 779'FEL, SEC.11)
Area	COLORADO	Well	STATE ANTELOPE O-2-14XRLNB
Field	WELD COUNTY	Wellbore	STATE ANTELOPE O-2-14XRLNB AWB
Facility	SEC.11-T05N-R62W		

WELLPATH COMPOSITION - Ref Wellbore: STATE ANTELOPE O-2-14XRLNB AWB    Ref Wellpath: STATE ANTELOPE O-2-14XRLNB AWP				
Start MD [ft]	End MD [ft]	Positional Uncertainty Model	Log Name/Comment	Wellbore
17.00	1597.00	BHI NaviTrak (Rotating+Axial Corr)	BHI MWD NAVITRAK (ROTATING + AXIAL CORR) <223-1597>	STATE ANTELOPE O-2-14XRLNB AWB
1597.00	17562.00	BHI AutoTrak Curve (Axial Corr, Short spacing)	BHI ATCURVE (AXIAL CORR + SHORT SPACING) <1680-17562>	STATE ANTELOPE O-2-14XRLNB AWB
17562.00	17587.00	Blind Drilling (std)	Projection to bit	STATE ANTELOPE O-2-14XRLNB AWB



# Actual Wellpath Report

STATE ANTELOPE O-2-14XRLNB AWP  
Page 11 of 11



REFERENCE WELLPATH IDENTIFICATION			
Operator	BONANZA CREEK OIL COMPANY	Slot	SLOT#01 STATE ANTELOPE O-2-14XRLNB (270'FNL & 779'FEL, SEC.11)
Area	COLORADO	Well	STATE ANTELOPE O-2-14XRLNB
Field	WELD COUNTY	Wellbore	STATE ANTELOPE O-2-14XRLNB AWB
Facility	SEC.11-T05N-R62W		

WELLPATH COMMENTS				
MD [ft]	Inclination [°]	Azimuth [°]	TVD [ft]	Comment
6936.00	88.310	188.620	6205.40	TOP OF PRODUCTION (380'FSL & 2679'FWL,SEC.02)
17562.00	90.090	175.680	6208.69	LAST BHGE SURVEY (507'FSL & 2614'FEL,SEC.14)
17587.00	90.090	175.680	6208.65	PROJ TO BIT (482'FSL & 2612'FEL,SEC.14)