

REV: 02 09-25-18 L.K. (COMPANY NAME CHANGE)

LEGEND:

 PROPOSED LOCATION



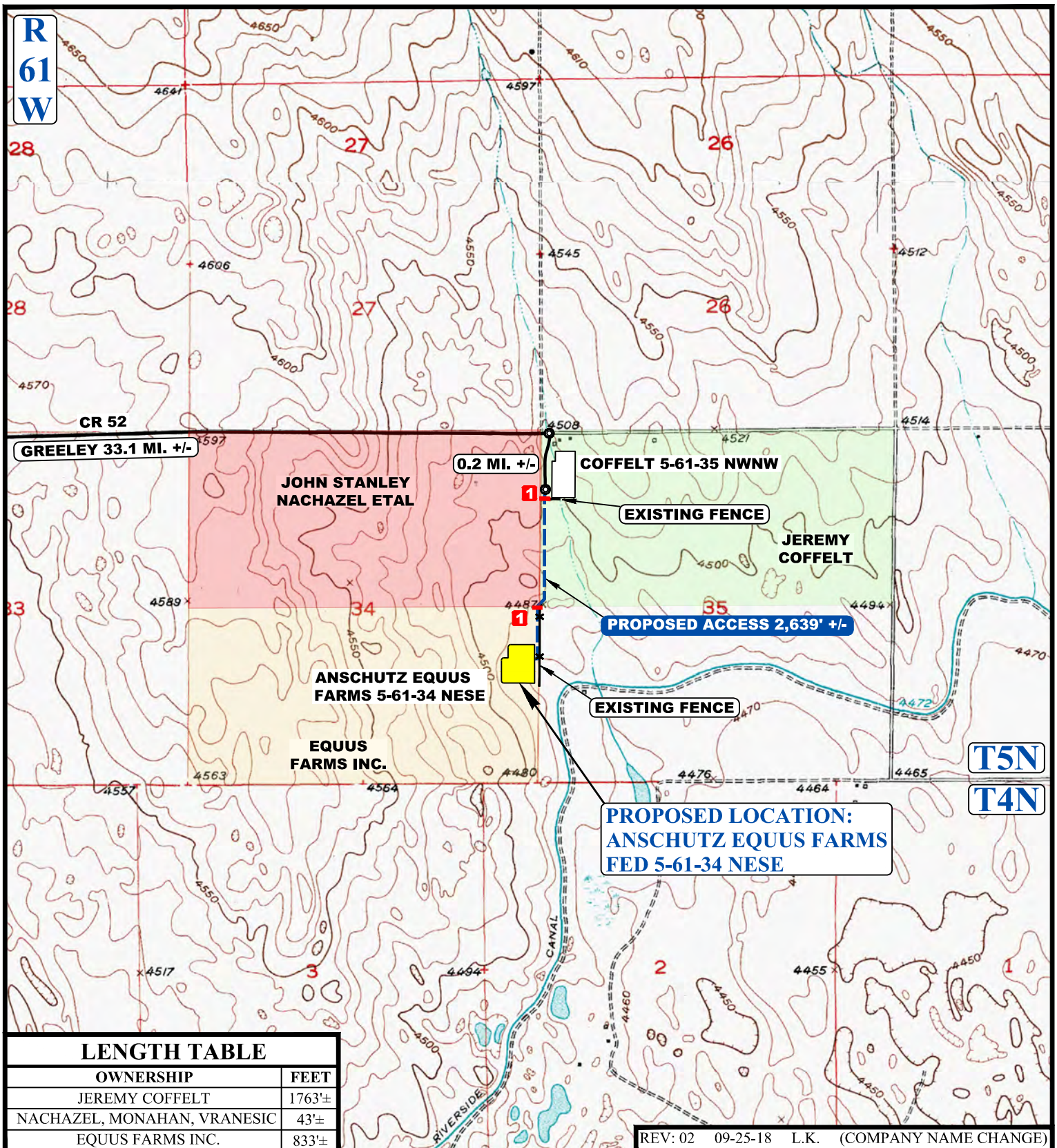
HIGHPOINT OPERATION CORPORATION

ANSCHUTZ EQUUS FARMS FED 5-61-34 NESE
NE 1/4 SE 1/4, SECTION 34, T5N, R61W, 6th P.M.
WELD COUNTY, COLORADO



UELS, LLC
Corporate Office * 85 South 200 East
Vernal, UT 84078 * (435) 789-1017

SURVEYED BY	J.C., T.M.	05-22-17	SCALE
DRAWN BY	J.L.G.	07-14-17	1 : 100,000
ACCESS ROAD MAP			TOPO A



NOTE: PARCEL DATA SHOWN HAS BEEN OBTAINED FROM VARIOUS SOURCES AND SHOULD BE USED FOR MAPPING, GRAPHIC AND PLANNING PURPOSES ONLY. NO WARRANTY IS MADE BY UINTAH ENGINEERING AND LAND SURVEYING (UELS) FOR ACCURACY OF THE PARCEL DATA.

LEGEND:

EXISTING ROAD
 PROPOSED ROAD
 EXISTING FENCE
 1 INSTALL CATTLE GUARD



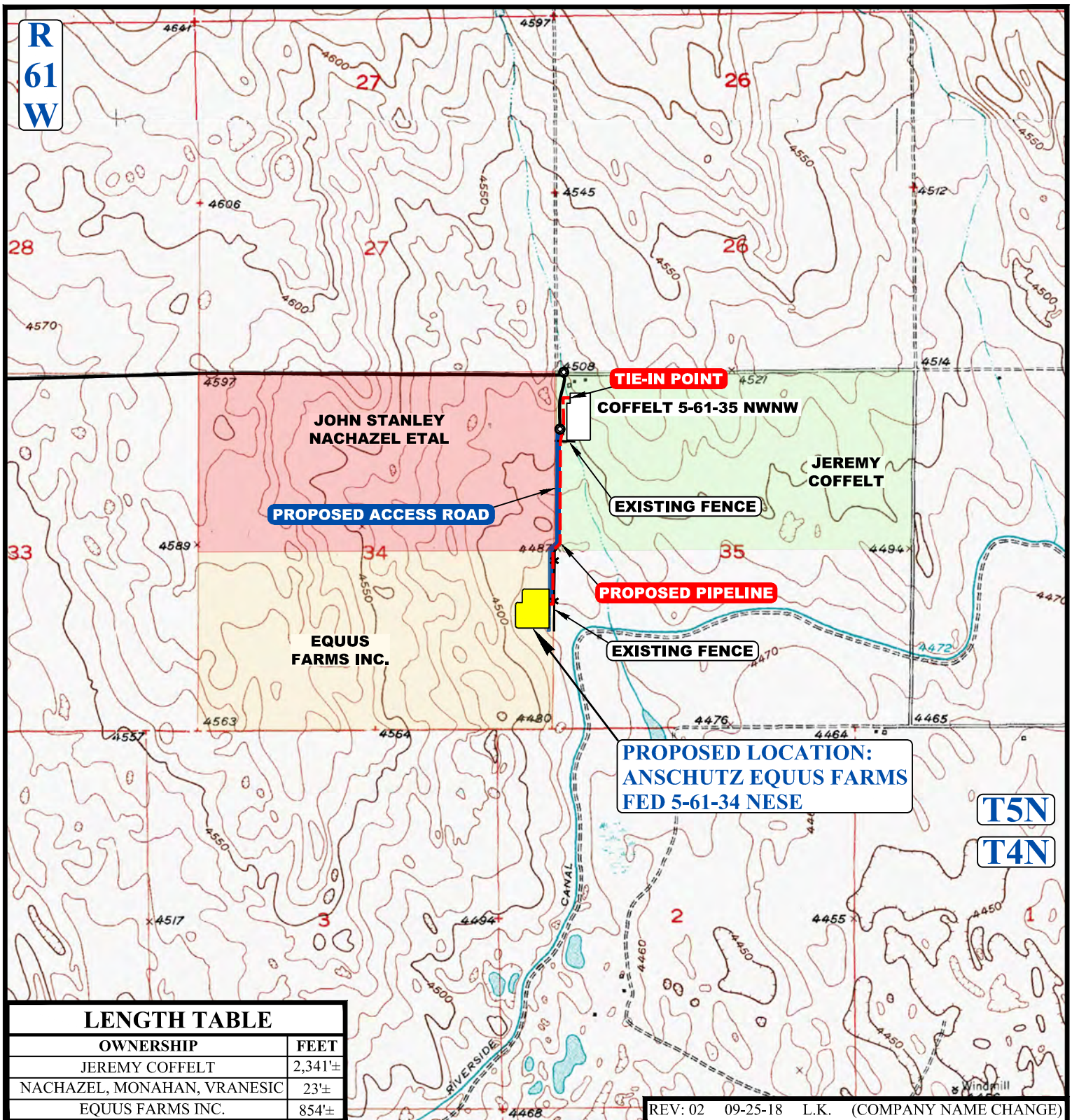
HIGHPOINT OPERATION CORPORATION

ANSCHUTZ EQUUS FARMS FED 5-61-34 NESE
NE 1/4 SE 1/4, SECTION 34, T5N, R61W, 6th P.M.
WELD COUNTY, COLORADO

SURVEYED BY	J.C., T.M.	05-22-17	SCALE
DRAWN BY	J.L.G.	07-14-17	1 : 24,000
ACCESS ROAD MAP			TOPO B



UELS, LLC
 Corporate Office * 85 South 200 East
 Vernal, UT 84078 * (435) 789-1017



APPROXIMATE TOTAL PIPELINE DISTANCE = 3,218' +/-

NOTE: PARCEL DATA SHOWN HAS BEEN OBTAINED FROM VARIOUS SOURCES AND SHOULD BE USED FOR MAPPING, GRAPHIC AND PLANNING PURPOSES ONLY. NO WARRANTY IS MADE BY UINTAH ENGINEERING AND LAND SURVEYING (UELS) FOR ACCURACY OF THE PARCEL DATA.

LEGEND:

- EXISTING ROAD
- EXISTING PIPELINE
- PROPOSED ROAD
- PROPOSED ROAD (SERVICING OTHER WELLS)
- PROPOSED PIPELINE
- EXISTING FENCE



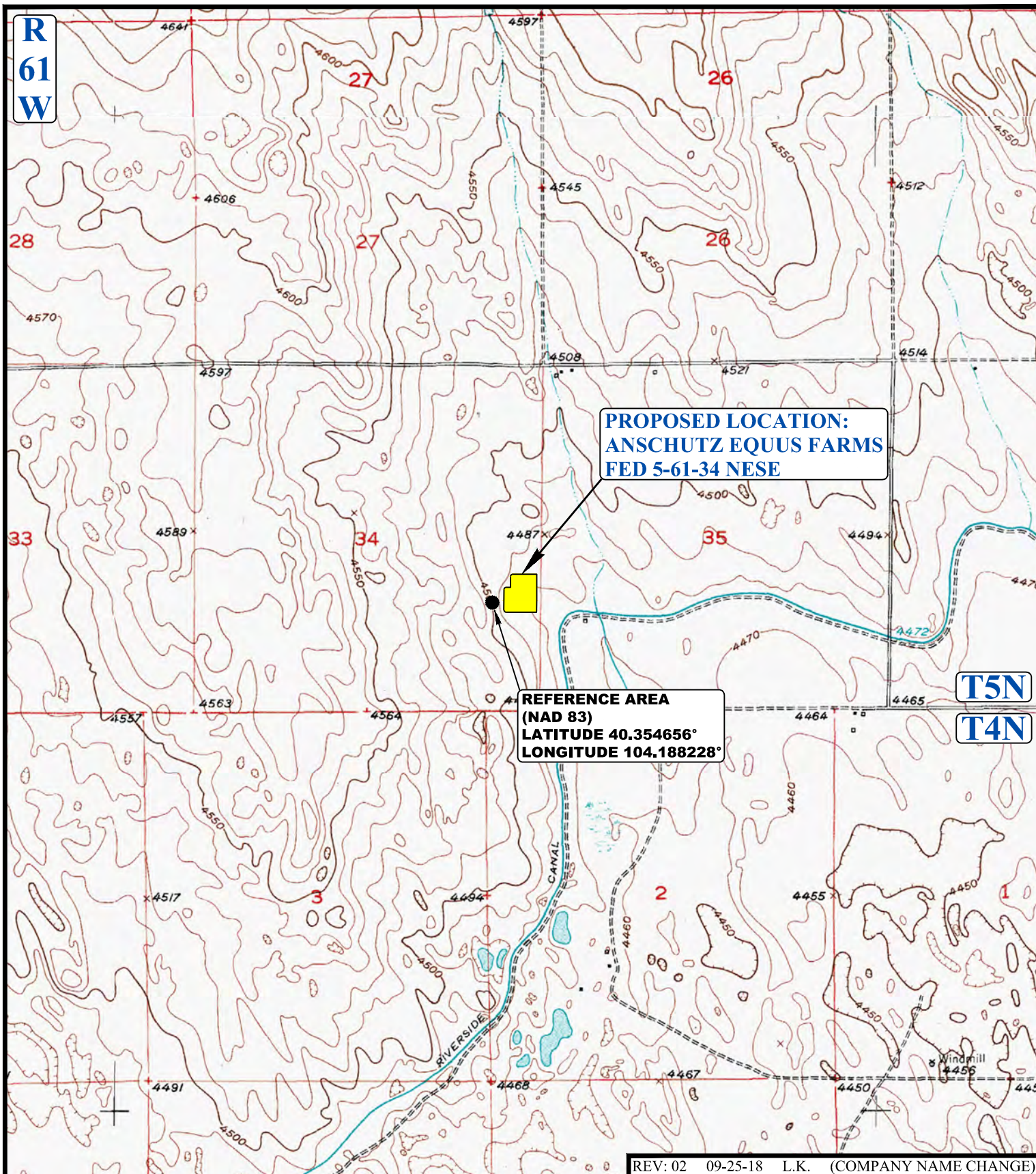
UELS, LLC
Corporate Office * 85 South 200 East
Vernal, UT 84078 * (435) 789-1017



HIGHPOINT OPERATION CORPORATION

ANSCHUTZ EQUUS FARMS FED 5-61-34 NESE
NE 1/4 SE 1/4, SECTION 34, T5N, R61W, 6th P.M.
WELD COUNTY, COLORADO

SURVEYED BY	J.C., T.M.	05-22-17	SCALE
DRAWN BY	J.L.G.	07-14-17	1 : 24,000
PIPELINE MAP		TOPO D	



REV: 02 09-25-18 L.K. (COMPANY NAME CHANGE)

LEGEND:



HIGHPOINT OPERATION CORPORATION

ANSCHUTZ EQUUS FARMS FED 5-61-34 NESE
NE 1/4 SE 1/4, SECTION 34, T5N, R61W, 6th P.M.
WELD COUNTY, COLORADO



UELS, LLC
 Corporate Office * 85 South 200 East
 Vernal, UT 84078 * (435) 789-1017

SURVEYED BY	J.C., T.M.	05-22-17	SCALE
DRAWN BY	J.L.G.	07-14-17	1 : 24,000
REFERENCE AREA MAP			REF TOPO