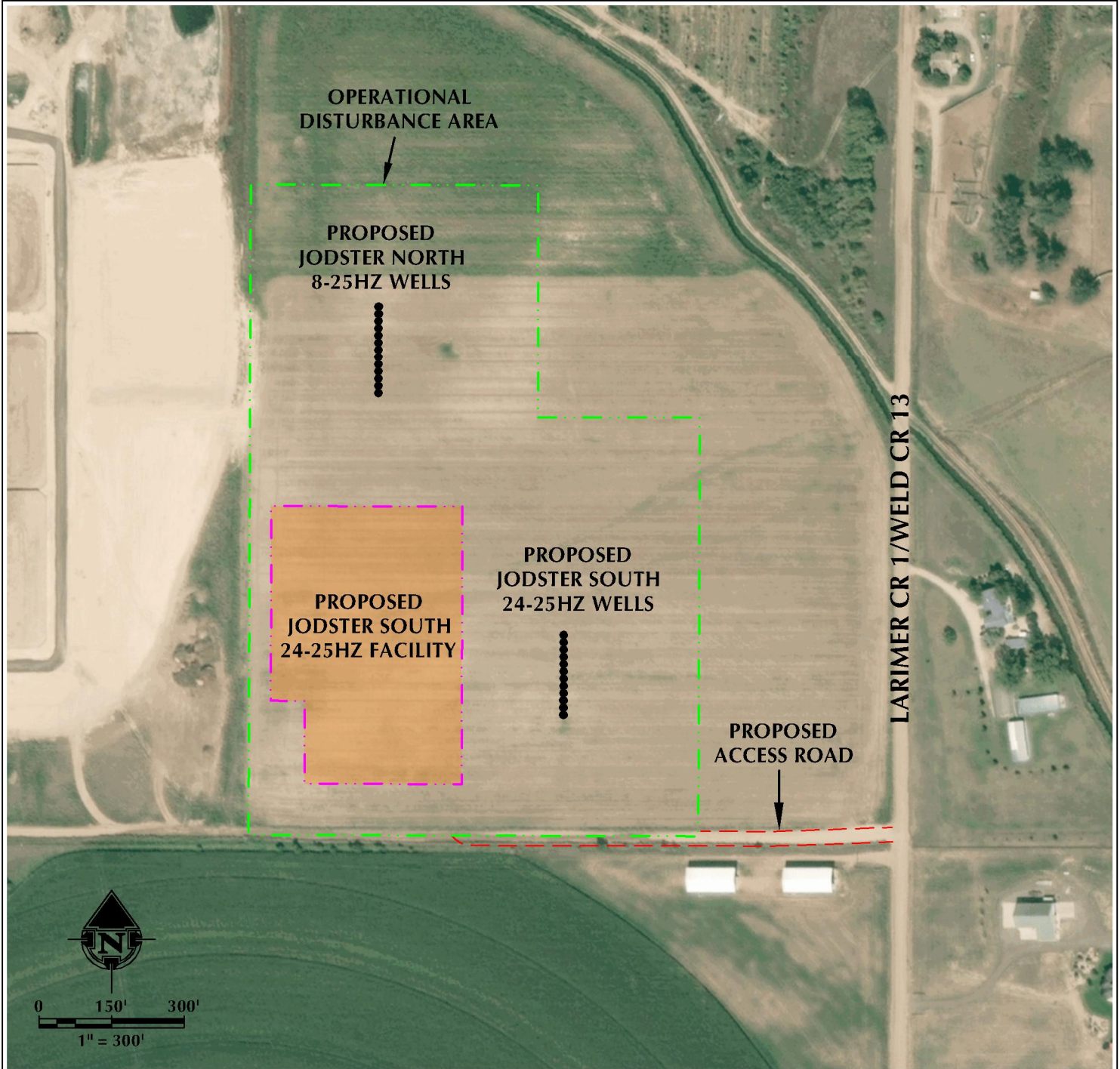


# JODSTER SOUTH 24-25HZ ACCESS MAP

SE1/4 NE1/4 SECTION 25, TOWNSHIP 5 NORTH, RANGE 68 WEST, 6TH P.M.



## LEGEND

- PROPOSED WELL
- ACCESS
- PROPOSED FACILITY
- DISTURBANCE BOUNDARY

INTERSECTION OF ACCESS ROAD AND  
LARIMER CR 1/WELD CR 13

LATITUDE: 40.370869°

LONGITUDE: -104.945292°



**609 CONSULTING, LLC**  
LOVELAND OFFICE  
6706 North Franklin Avenue  
Loveland, Colorado 80538  
Phone: 970-776-4331

SHERIDAN OFFICE  
1095 Saberton Avenue  
Sheridan, Wyoming 82801  
Phone: 307-674-0609

DATE SURVEYED: 9/3/18  
DATE: 9/20/18  
DRAFTER: DJD  
REVISED:

DATA SOURCES:  
- AERIAL COURTESY OF ESRI, INC.

PREPARED FOR:  
**Kerr-McGee Oil & Gas Onshore L.P.**