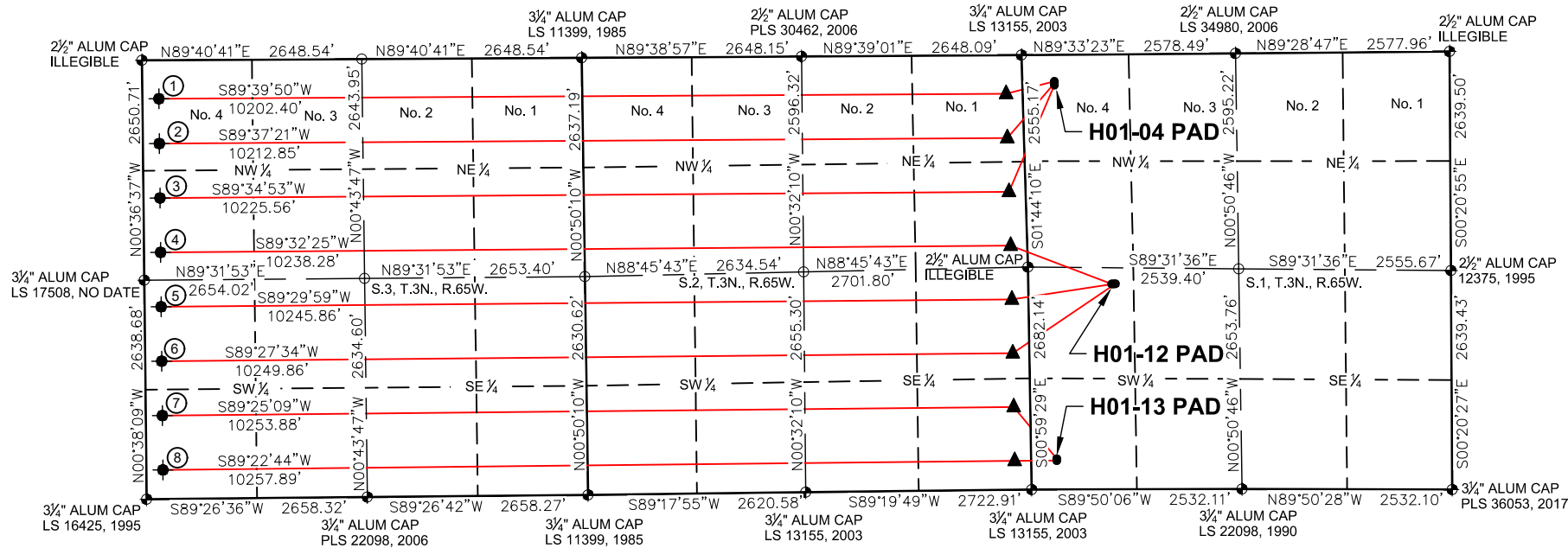
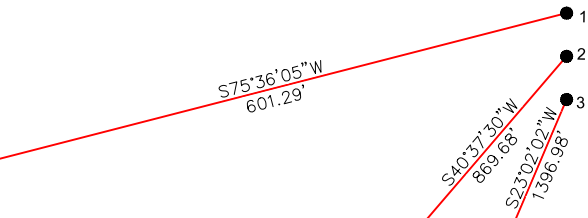


H01-04 PAD, H01-12 PAD, AND H01-13 PAD
MULTI-WELL LOCATION PLAT / MULTI-WELL PLAN
T3N R65W SECTION 1



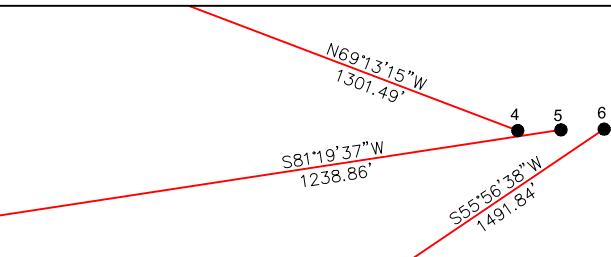
PROPOSED WELLBORE DIRECTION DATA

H01-04 PAD
SLOTS 1-3



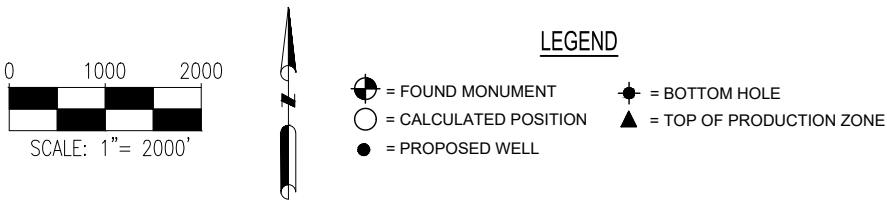
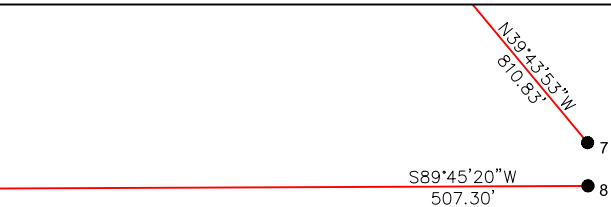
PROPOSED WELLBORE DIRECTION DATA

H01-12 PAD
SLOTS 4-6



PROPOSED WELLBORE DIRECTION DATA

H01-13 PAD
SLOTS 7-8



SURFACE HOLE LOCATION							TOP OF PRODUCTIVE ZONE		BOTTOM HOLE LOCATION		
SLOT	WELL NAME	LATITUDE	LONGITUDE	FOOTAGE		QTR-QTR	ELEV.	FOOTAGE		FOOTAGE	
1	SHELTON H03-683	40.26063°N	104.61951°W	320' FNL	387' FWL	NWNW	4824'	465' FNL	200' FEL	465' FNL	200' FWL
2	SHELTON H03-675	40.26056°N	104.61951°W	342' FNL	386' FWL	NWNW	4824'	998' FNL	200' FEL	1006' FNL	200' FWL
3	SHELTON H03-665	40.26050°N	104.61951°W	365' FNL	385' FWL	NWNW	4824'	1646' FNL	200' FEL	1661' FNL	200' FWL
4	SHELTON H03-655	40.25391°N	104.61712°W	2476' FSL	1005' FWL	NWSW	4839'	2294' FNL	200' FEL	2317' FNL	200' FWL
5	SHELTON H03-645	40.25391°N	104.61704°W	2476' FSL	1028' FWL	NWSW	4839'	2295' FSL	200' FEL	2317' FSL	200' FWL
6	SHELTON H03-635	40.25391°N	104.61696°W	2477' FSL	1050' FWL	NWSW	4840'	1647' FSL	200' FEL	1661' FSL	200' FWL
7	SHELTON H03-625	40.24814°N	104.61957°W	371' FSL	307' FWL	SWSW	4831'	998' FSL	200' FEL	1006' FSL	200' FWL
8	SHELTON H03-615	40.24808°N	104.61957°W	349' FSL	307' FWL	SWSW	4832'	350' FSL	200' FEL	350' FSL	200' FWL

Notes:
1) All bearings are Grid Bearings of the Colorado State Plane Coordinate System, North Zone, North American Datum 1983/2011. The lineal dimensions as shown herein are grid distances based upon the "U.S. Survey Foot." To get ground distances multiply shown distance by 1.0002705.
2) Distances are measured at 90° from section line of the Sixth Principal Meridian, County of Weld, State of Colorado.
3) Ground elevations are based on an observed GPS elevation (NAVD 1988 DATUM).
4) Surface use: "IRRIGATED CROP"
5) Instrument Operator: Dominick Davis
6) This map does not represent a boundary survey.