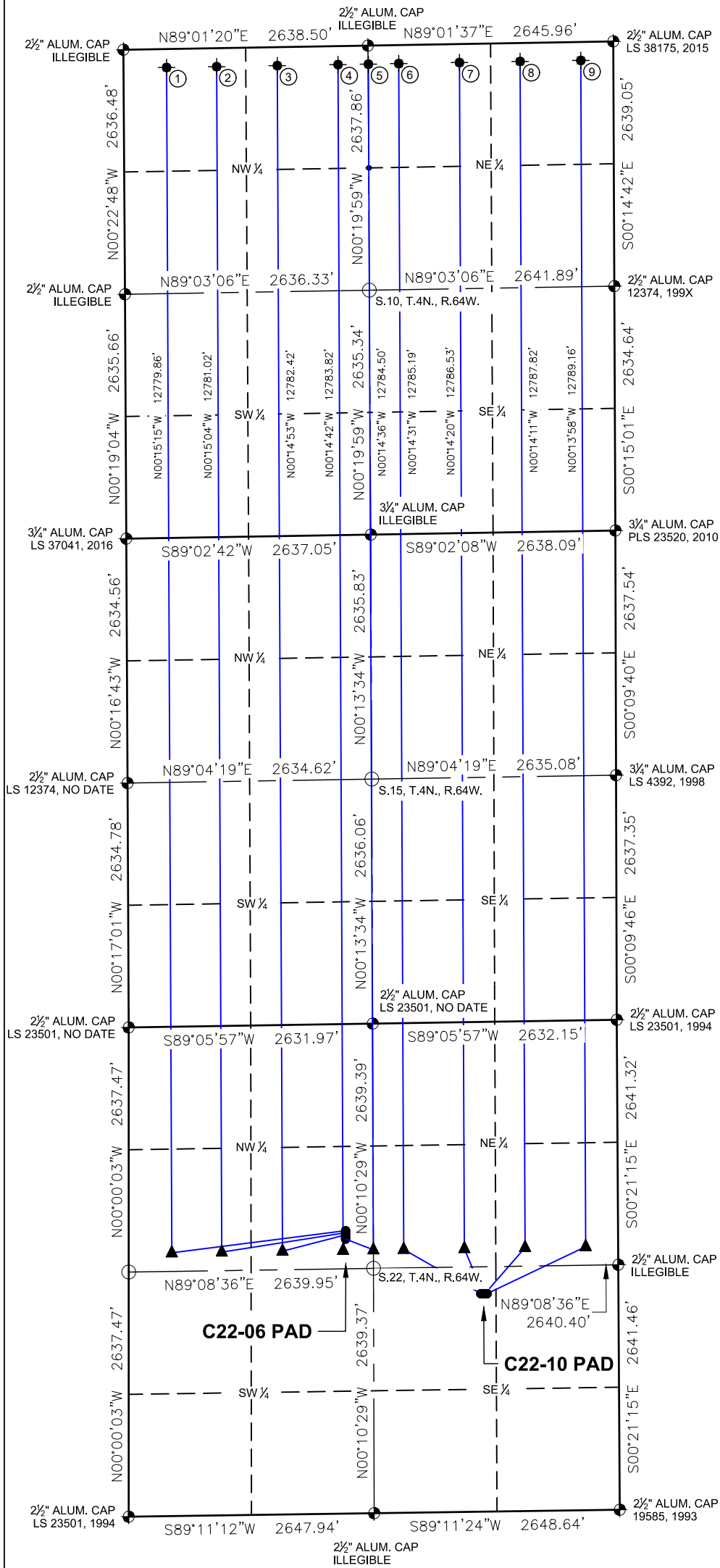
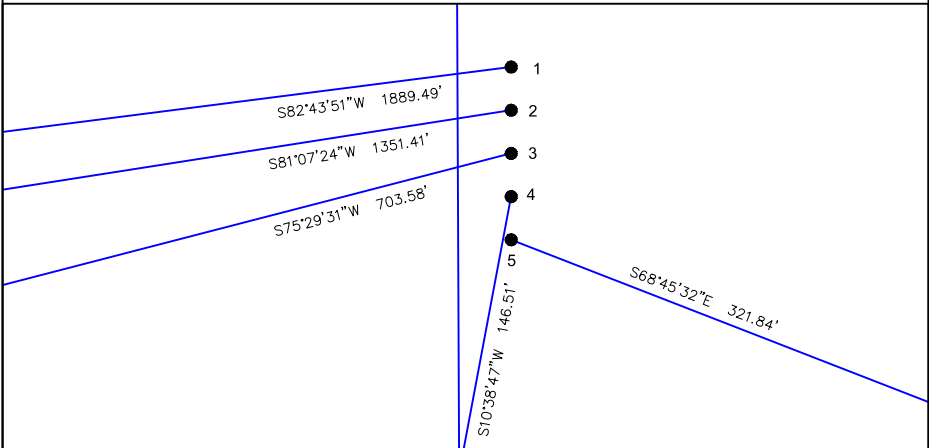


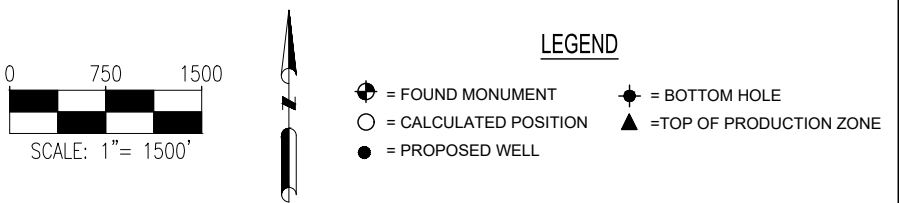
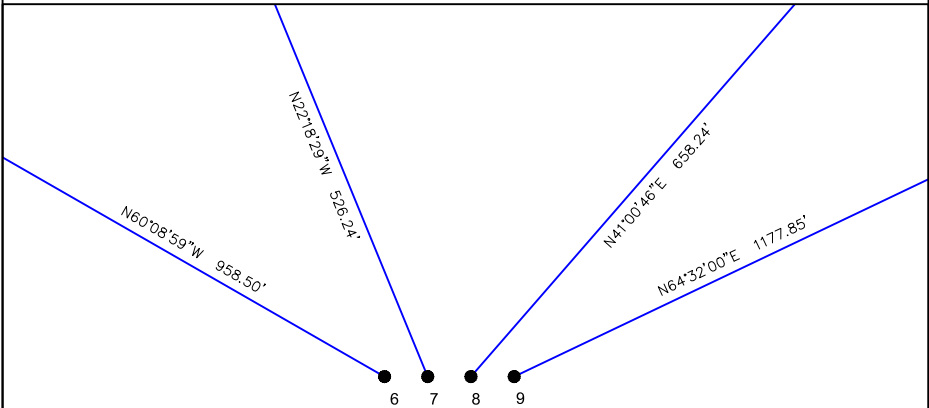
C22-06 PAD & C22-10 PAD
MULTI-WELL LOCATION PLAT / MULTI-WELL PLAN
T4N R64W SECTION 22



PROPOSED WELLBORE DIRECTION DATA
C22-06 PAD
SLOTS 1-5




PROPOSED WELLBORE DIRECTION DATA
C22-10 PAD
SLOTS 6-9



- Notes:
- 1) All bearings are Grid Bearings of the Colorado State Plane Coordinate System, North Zone, North American Datum 1983/2011. The lineal dimensions as shown herein are grid distances based upon the "U.S. Survey Foot." To get ground distances multiply shown distance by 1.000261.
 - 2) Distances are measured at 90° from section line of the Sixth Principal Meridian, County of Weld, State of Colorado.
 - 3) Ground elevations are based on an observed GPS elevation (NAVD 1988 DATUM).
 - 4) Surface use: "IRRIGATED CROP"
 - 5) Instrument Operator: Dominick Davis
 - 6) This map does not represent a boundary survey.

DISCLAIMER:
THIS PLOT DOES NOT REPRESENT A MONUMENTED LAND SURVEY AND SHOULD NOT BE RELIED UPON TO DETERMINE BOUNDARY LINES, PROPERTY OWNERSHIP OR OTHER PROPERTY INTERESTS. PARCEL LINES, IF DEPICTED HAVE NOT BEEN FIELD VERIFIED AND MAY BE BASED UPON PUBLICLY AVAILABLE DATA THAT ALSO HAS NOT BEEN INDEPENDENTLY VERIFIED.

SURFACE HOLE LOCATION							TOP OF PRODUCTIVE ZONE		BOTTOM HOLE LOCATION	
SLOT	WELL NAME	LATITUDE	LONGITUDE	FOOTAGE		QTR-QTR	ELEV.	FOOTAGE		FOOTAGE
1	BORYS C22-783	40.29907°N	104.53793°W	2228' FNL	2339' FWL	SEnw	4662'	2438' FNL	465' FWL	200' FNL / 465' FWL
2	BORYS C22-775	40.29900°N	104.53793°W	2250' FNL	2339' FWL	SEnw	4662'	2438' FNL	1004' FWL	200' FNL / 1005' FWL
3	BORYS C22-765	40.29894°N	104.53793°W	2273' FNL	2339' FWL	SEnw	4662'	2438' FNL	1658' FWL	200' FNL / 1660' FWL
4	BORYS C22-755	40.29888°N	104.53793°W	2295' FNL	2339' FWL	SEnw	4662'	2439' FNL	2312' FWL	200' FNL / 2314' FWL
5	BORYS C22-750	40.29882°N	104.53794°W	2318' FNL	2339' FWL	SEnw	4663'	2439' FNL	2639' FWL	200' FNL / 2642' FEL
6	VROOMAN C22-745	40.29716°N	104.53273°W	2351' FSL	1484' FEL	NWSE	4662'	2439' FNL	2312' FEL	200' FNL / 2314' FEL
7	VROOMAN C22-735	40.29716°N	104.53265°W	2350' FSL	1462' FEL	NWSE	4662'	2440' FNL	1658' FEL	200' FNL / 1660' FEL
8	VROOMAN C22-725	40.29716°N	104.53257°W	2350' FSL	1439' FEL	NWSE	4662'	2440' FNL	1004' FEL	200' FNL / 1005' FEL
9	VROOMAN C22-715	40.29716°N	104.53249°W	2350' FSL	1417' FEL	NWSE	4662'	2441' FNL	350' FEL	200' FNL / 350' FEL



7535 Hilltop Circle
Denver, CO 80221
(303) 928-7128
www.ascentgeomatics.com

FIELD DATE:
09-13-18

DRAWN BY:
JW

DRAWING DATE:
09-28-18

CHECKED BY:
VQD

SURFACE LOCATION:
SEC. 22, T4N, R64W, 6TH P.M.
WELD COUNTY, COLORADO

PUBLICLY AVAILABLE DATA SOURCES HAVE NOT
BEEN INDEPENDENTLY VERIFIED BY ASCENT.

