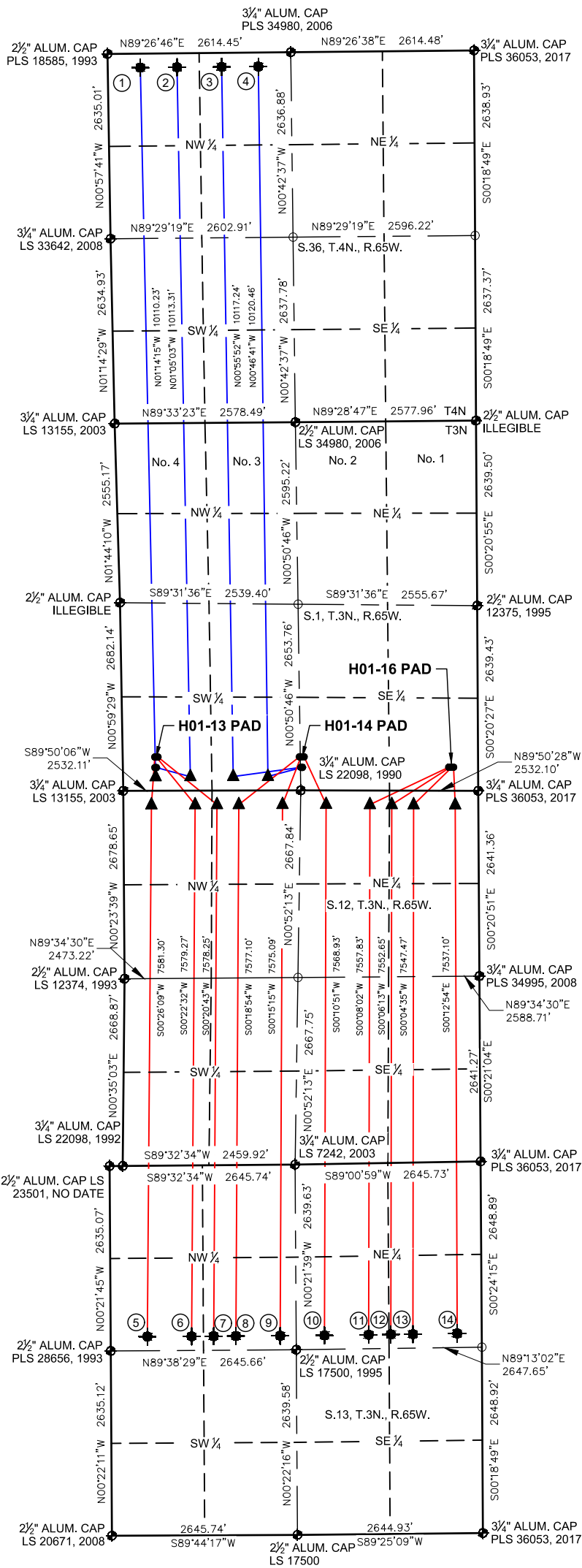
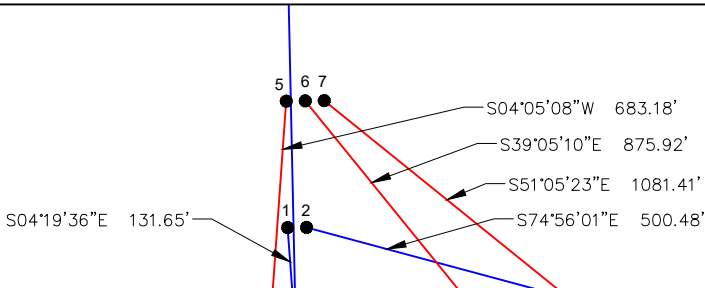


H01-13 PAD, H01-14 PAD, & H01-16 PAD
MULTI-WELL LOCATION PLAT / MULTI-WELL PLAN
SECTION 1 T3N R65W



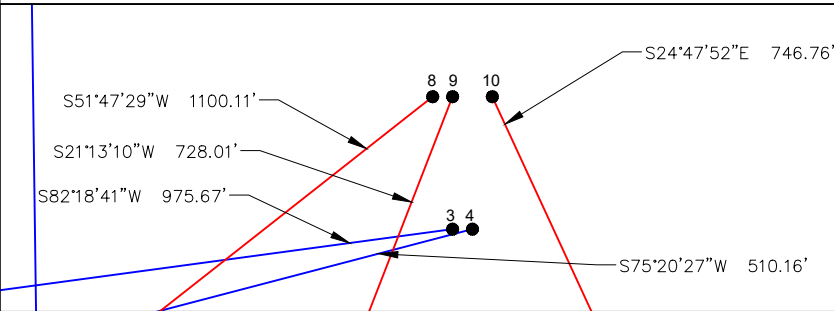
PROPOSED WELLBORE DIRECTION DATA

H01-13 PAD
SLOTS 1-2, 5-7



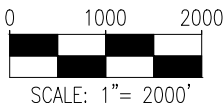
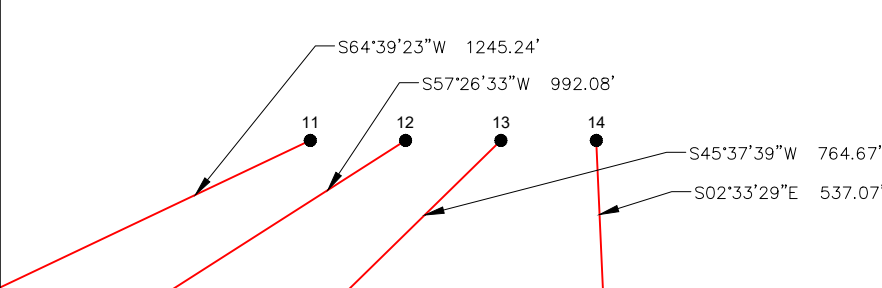
PROPOSED WELLBORE DIRECTION DATA

H01-14 PAD
SLOTS 3-4, 8-10



PROPOSED WELLBORE DIRECTION DATA

H01-16 PAD
SLOTS 11-14



LEGEND

- = FOUND MONUMENT
- = CALCULATED POSITION
- = PROPOSED WELL
- ⬮ = BOTTOM HOLE
- ▲ = TOP OF PRODUCTION ZONE

Notes:

- 1) All bearings are Grid Bearings of the Colorado State Plane Coordinate System, North Zone, North American Datum 1983/2011. The lineal dimensions as shown herein are grid distances based upon the "U.S. Survey Foot." To get ground distances multiply shown distance by 1.0002705.
- 2) Distances are measured at 90° from section line of the Sixth Principal Meridian, County of Weld, State of Colorado.
- 3) Ground elevations are based on an observed GPS elevation (NAVD 1988 DATUM).
- 4) Surface use: "IRRIGATED CROP LAND"
- 5) Instrument Operator: Dominick Davis
- 6) This map does not represent a boundary survey.

DISCLAIMER:

THIS PLOT DOES NOT REPRESENT A MONUMENTED LAND SURVEY AND SHOULD NOT BE RELIED UPON TO DETERMINE BOUNDARY LINES, PROPERTY OWNERSHIP OR OTHER PROPERTY INTERESTS. PARCEL LINES, IF DEPICTED HAVE NOT BEEN FIELD VERIFIED AND MAY BE BASED UPON PUBLICLY AVAILABLE DATA THAT ALSO HAS NOT BEEN INDEPENDENTLY VERIFIED.

SURFACE HOLE LOCATION							TOP OF PRODUCTIVE ZONE		BOTTOM HOLE LOCATION	
SLOT	WELL NAME	LATITUDE	LONGITUDE	FOOTAGE		QTR-QTR	ELEV.	FOOTAGE		FOOTAGE
1	SHELTON H01-783	40.24803°N	104.61903°W	331' FSL	457' FWL	SWSW	4834'	200' FSL	465' FWL	200' FNL
2	SHELTON H01-780	40.24803°N	104.61895°W	331' FSL	480' FWL	SWSW	4835'	200' FSL	961' FWL	200' FNL
3	SHELTON H01-766	40.24798°N	104.61157°W	328' FSL	2527' FEL	SWSE	4865'	200' FSL	1572' FWL	200' FNL
4	SHELTON H01-759	40.24798°N	104.61149°W	328' FSL	2504' FEL	SWSE	4866'	200' FSL	2067' FWL	200' FNL
5	SHELTON H13-782	40.24844°N	104.61903°W	481' FSL	458' FWL	SWSW	4834'	200' FNL	400' FWL	2435' FNL
6	SHELTON H13-773	40.24844°N	104.61895°W	481' FSL	481' FWL	SWSW	4834'	200' FNL	1023' FWL	2437' FNL
7	SHELTON H13-768	40.24844°N	104.61887°W	482' FSL	503' FWL	SWSW	4835'	200' FNL	1335' FWL	2437' FNL
8	SHELTON H13-763	40.24839°N	104.61164°W	478' FSL	2521' FWL	SESW	4865'	200' FNL	1647' FWL	2438' FNL
9	SHELTON H13-753	40.24839°N	104.61156°W	478' FSL	2526' FEL	SWSE	4865'	200' FNL	2270' FWL	2439' FNL
10	SHELTON H13-744	40.24839°N	104.61140°W	478' FSL	2481' FEL	SWSE	4866'	200' FNL	2172' FEL	2441' FNL
11	SHELTON H13-734	40.24793°N	104.60401°W	336' FSL	418' FEL	SESE	4866'	200' FNL	1547' FEL	2443' FNL
12	SHELTON H13-730	40.24793°N	104.60393°W	336' FSL	396' FEL	SESE	4866'	200' FNL	1235' FEL	2444' FNL
13	SHELTON H13-724	40.24793°N	104.60385°W	336' FSL	373' FEL	SESE	4865'	200' FNL	923' FEL	2445' FNL
14	SHELTON H13-715	40.24793°N	104.60377°W	336' FSL	351' FEL	SESE	4864'	200' FNL	330' FEL	2448' FNL



7535 Hilltop Circle
Denver, CO 80221
(303) 928-7128
www.ascentgeomatics.com

FIELD
DATE:
09-15-18

DRAWN BY:
ACM

DRAWING
DATE:
10-02-18

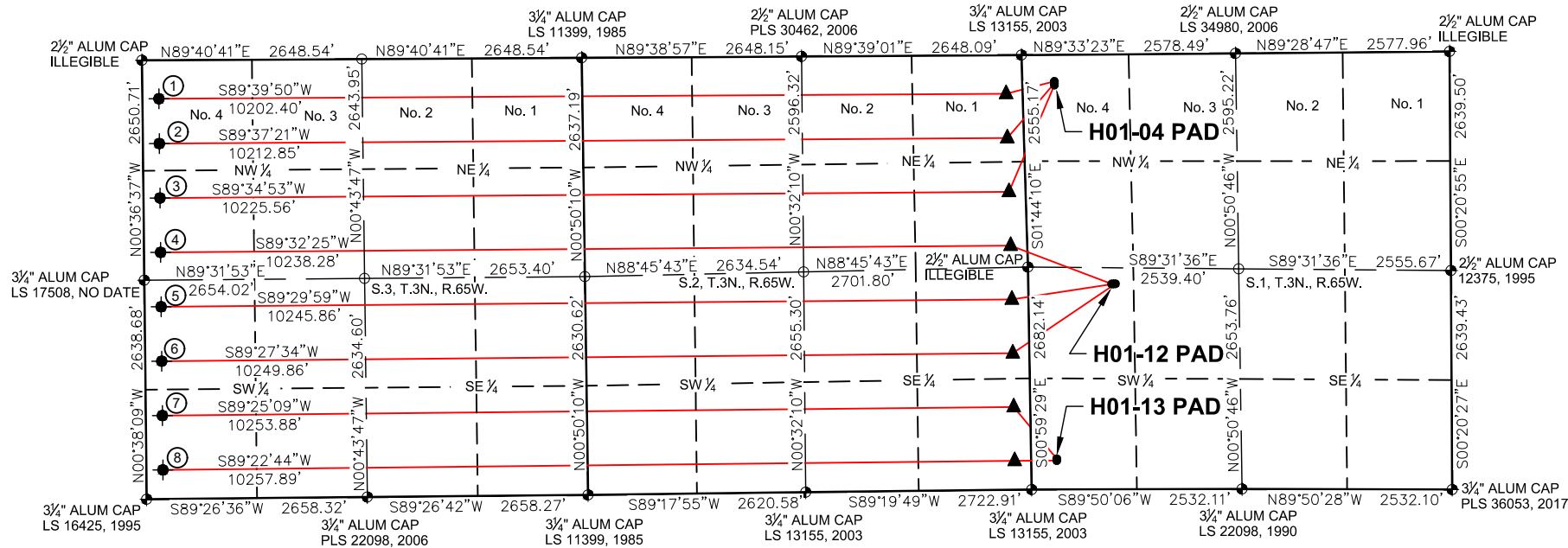
CHECKED BY:
FWM

SURFACE LOCATION:
SEC. 1, T3N, R65W, 6TH P.M.
WELD COUNTY, COLORADO

PUBLICLY AVAILABLE DATA SOURCES HAVE NOT
BEEN INDEPENDENTLY VERIFIED BY ASCENT.

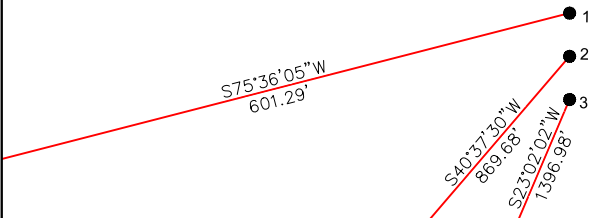


H01-04 PAD, H01-12 PAD, AND H01-13 PAD
MULTI-WELL LOCATION PLAT / MULTI-WELL PLAN
T3N R65W SECTION 1



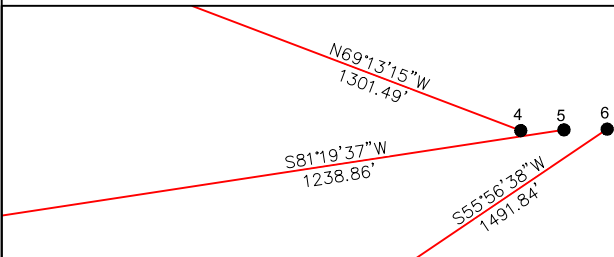
PROPOSED WELLBORE DIRECTION DATA

H01-04 PAD
SLOTS 1-3



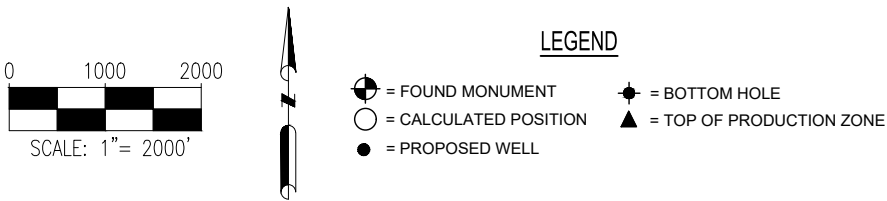
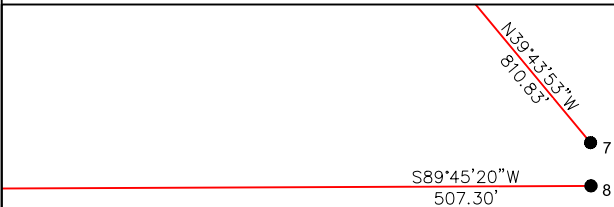
PROPOSED WELLBORE DIRECTION DATA

H01-12 PAD
SLOTS 4-6



PROPOSED WELLBORE DIRECTION DATA

H01-13 PAD
SLOTS 7-8



SURFACE HOLE LOCATION								TOP OF PRODUCTIVE ZONE		BOTTOM HOLE LOCATION	
SLOT	WELL NAME	LATITUDE	LONGITUDE	FOOTAGE		QTR-QTR	ELEV.	FOOTAGE		FOOTAGE	
1	SHELTON H03-683	40.26063°N	104.61951°W	320' FNL	387' FWL	NWNW	4824'	465' FNL	200' FEL	465' FNL	200' FWL
2	SHELTON H03-675	40.26056°N	104.61951°W	342' FNL	386' FWL	NWNW	4824'	998' FNL	200' FEL	1006' FNL	200' FWL
3	SHELTON H03-665	40.26050°N	104.61951°W	365' FNL	385' FWL	NWNW	4824'	1646' FNL	200' FEL	1661' FNL	200' FWL
4	SHELTON H03-655	40.25391°N	104.61712°W	2476' FSL	1005' FWL	NWSW	4839'	2294' FNL	200' FEL	2317' FNL	200' FWL
5	SHELTON H03-645	40.25391°N	104.61704°W	2476' FSL	1028' FWL	NWSW	4839'	2295' FSL	200' FEL	2317' FSL	200' FWL
6	SHELTON H03-635	40.25391°N	104.61696°W	2477' FSL	1050' FWL	NWSW	4840'	1647' FSL	200' FEL	1661' FSL	200' FWL
7	SHELTON H03-625	40.24814°N	104.61957°W	371' FSL	307' FWL	SWSW	4831'	998' FSL	200' FEL	1006' FSL	200' FWL
8	SHELTON H03-615	40.24808°N	104.61957°W	349' FSL	307' FWL	SWSW	4832'	350' FSL	200' FEL	350' FSL	200' FWL

Notes:
1) All bearings are Grid Bearings of the Colorado State Plane Coordinate System, North Zone, North American Datum 1983/2011. The lineal dimensions as shown herein are grid distances based upon the "U.S. Survey Foot." To get ground distances multiply shown distance by 1.0002705.
2) Distances are measured at 90° from section line of the Sixth Principal Meridian, County of Weld, State of Colorado.
3) Ground elevations are based on an observed GPS elevation (NAVD 1988 DATUM).
4) Surface use: "IRRIGATED CROP"
5) Instrument Operator: Dominick Davis
6) This map does not represent a boundary survey.



FIELD DATE:
09-15-18
DRAWN BY:
JW

DRAWING DATE:
09-17-18
CHECKED BY:
SMF

SURFACE LOCATION:
SEC. 1, T3N, R65W, 6TH P.M.
WELD COUNTY, COLORADO

DISCLAIMER:
THIS PLOT DOES NOT REPRESENT A MONUMENTED LAND SURVEY AND SHOULD NOT BE RELIED UPON TO DETERMINE BOUNDARY LINES, PROPERTY OWNERSHIP OR OTHER PROPERTY INTERESTS. PARCEL LINES, IF DEPICTED HAVE NOT BEEN FIELD VERIFIED AND MAY BE BASED UPON PUBLICLY AVAILABLE DATA THAT ALSO HAS NOT BEEN INDEPENDENTLY VERIFIED.

PUBLICLY AVAILABLE DATA SOURCES HAVE NOT BEEN INDEPENDENTLY VERIFIED BY ASCENT.

