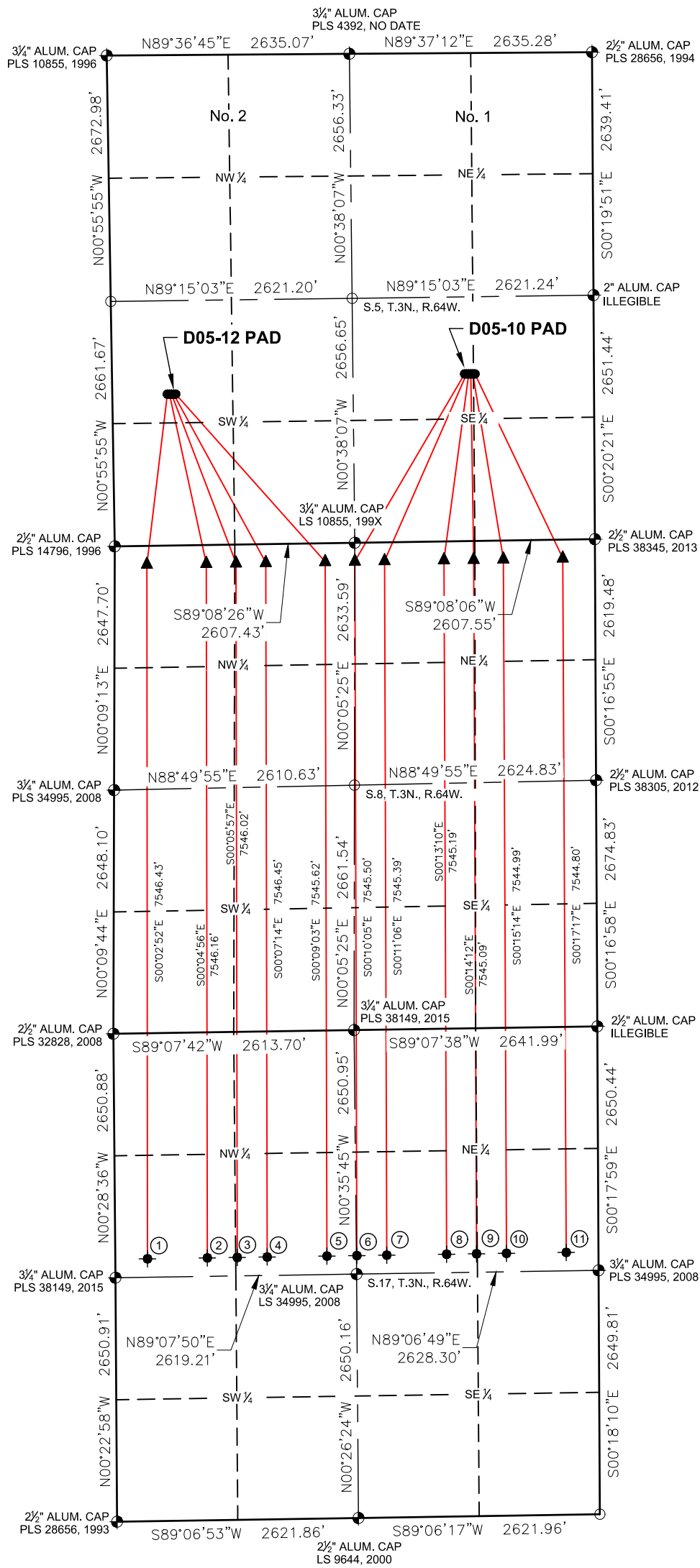
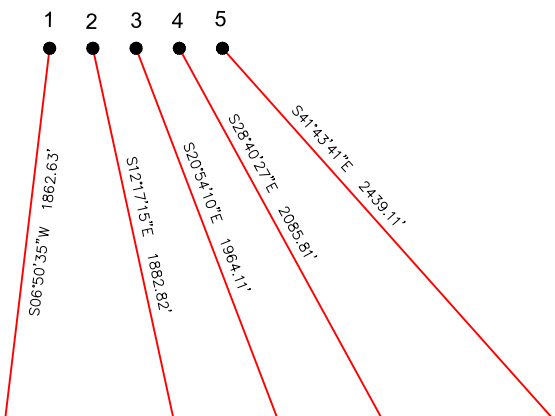


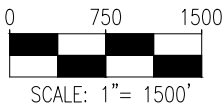
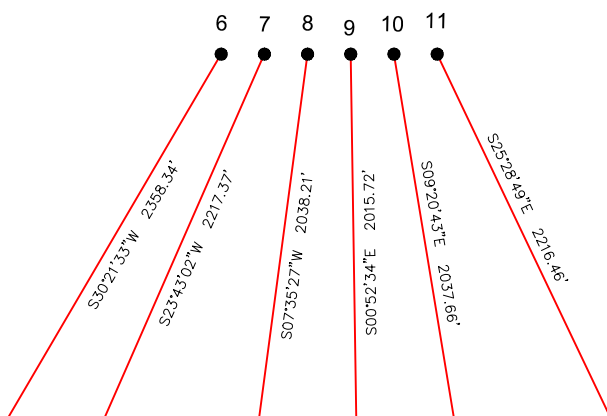
D05-12 PAD & D05-10 PAD
MULTI-WELL LOCATION PLAT / MULTI-WELL PLAN
T3N R64W SECTION 5



PROPOSED WELLBORE DIRECTION DATA
D05-12 PAD
SLOTS 1-5



PROPOSED WELLBORE DIRECTION DATA
D05-10 PAD
SLOTS 6-11



LEGEND

- = FOUND MONUMENT
- = CALCULATED POSITION
- = PROPOSED WELL
- ◆ = BOTTOM HOLE
- ▲ = TOP OF PRODUCTION ZONE

- Notes:
- 1) All bearings are Grid Bearings of the Colorado State Plane Coordinate System, North Zone, North American Datum 1983/2011. The lineal dimensions as shown herein are grid distances based upon the "U.S. Survey Foot." To get ground distances multiply shown distance by 1.000271.
 - 2) Distances are measured at 90° from section line of the Sixth Principal Meridian, County of Weld, State of Colorado.
 - 3) Ground elevations are based on an observed GPS elevation (NAVD 1988 DATUM).
 - 4) Surface use: "RANGELAND"
 - 5) Instrument Operator: DOMINICK DAVIS
 - 6) This map does not represent a boundary survey.

DISCLAIMER:
THIS PLOT DOES NOT REPRESENT A MONUMENTED LAND SURVEY AND SHOULD NOT BE RELIED UPON TO DETERMINE BOUNDARY LINES, PROPERTY OWNERSHIP OR OTHER PROPERTY INTERESTS. PARCEL LINES, IF DEPICTED HAVE NOT BEEN FIELD VERIFIED AND MAY BE BASED UPON PUBLICLY AVAILABLE DATA THAT ALSO HAS NOT BEEN INDEPENDENTLY VERIFIED.

SURFACE HOLE LOCATION							TOP OF PRODUCTIVE ZONE		BOTTOM HOLE LOCATION	
SLOT	WELL NAME	LATITUDE	LONGITUDE	FOOTAGE		QTR-QTR	ELEV.	FOOTAGE		FOOTAGE
1	BECKER D17-785	40.25167°N	104.58202°W	1646' FSL	598' FWL	NWSW	4771'	200' FNL	350' FWL	2451' FNL
2	BECKER D17-775	40.25167°N	104.58194°W	1646' FSL	621' FWL	NWSW	4772'	200' FNL	995' FWL	2451' FNL
3	BECKER D17-770	40.25167°N	104.58186°W	1645' FSL	643' FWL	NWSW	4772'	200' FNL	1318' FWL	2451' FNL
4	BECKER D17-765	40.25167°N	104.58178°W	1645' FSL	666' FWL	NWSW	4771'	200' FNL	1640' FWL	2451' FNL
5	BECKER D17-755	40.25167°N	104.58170°W	1645' FSL	688' FWL	NWSW	4770'	200' FNL	2285' FWL	2451' FNL
6	BECKER D17-750	40.25218°N	104.57045°W	1817' FSL	1404' FEL	NWSE	4747'	200' FNL	2608' FEL	2451' FNL
7	BECKER D17-745	40.25218°N	104.57037°W	1816' FSL	1382' FEL	NWSE	4747'	200' FNL	2286' FEL	2451' FNL
8	BECKER D17-735	40.25218°N	104.57029°W	1816' FSL	1359' FEL	NWSE	4747'	200' FNL	1640' FEL	2450' FNL
9	BECKER D17-730	40.25218°N	104.57021°W	1816' FSL	1337' FEL	NWSE	4746'	200' FNL	1318' FEL	2450' FNL
10	BECKER D17-725	40.25218°N	104.57013°W	1815' FSL	1314' FEL	NWSE	4745'	200' FNL	995' FEL	2450' FNL
11	BECKER D17-715	40.25218°N	104.57005°W	1815' FSL	1292' FEL	NESE	4745'	200' FNL	350' FEL	2450' FNL

7535 Hilltop Circle
Denver, CO 80221
(303) 928-7128
www.ascentgeomatics.com

FIELD DATE:
09-13-18

DRAWN BY:
FWM

DRAWING DATE:
09-14-18

CHECKED BY:
SMF

SURFACE LOCATION:
SEC. 5, T3N, R64W, 6TH P.M.
WELD COUNTY, COLORADO

PUBLICLY AVAILABLE DATA SOURCES HAVE NOT BEEN INDEPENDENTLY VERIFIED BY ASCENT.