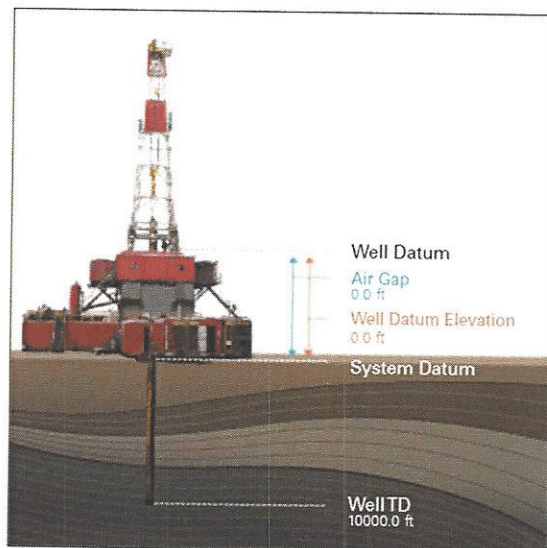


1.0 Job Design

1.1 Overview

Job Type	Primary Cement Job
Injection Path	Casing/Conventional
Foam Job	No

Well Snapshot



Simulations Performed

1.2 Pressure Schedule Inputs

Pressure Mode	Conventional
---------------	--------------

1.3 Pressure Schedule Table

Start (Pump Volume in bbl)	End (Pump Volume in bbl)	Pressure (psi)
0.00	End	0.00

1.4 Time of Stages

Graph Label	Time (min)	Stage Starts Pumping	Stage Enters Annulus
①	0.0	Pre-Rig Up Safety Meeting	
②	0.0	Shutdown	
③	0.0	Pump H2O Spacer	
④	0.0	Rig Down Lines	
⑤	0.0	Pre-Convoy Safety Meeting	

⑥	0.0	Start Job
⑦	0.0	Test Lines
⑧	0.0	Arrive At Loc
⑨	0.0	Post-Job Safety Meeting (Pre Rig-Down)
⑩	0.0	Crew Leave Location
⑪	0.0	Other
⑫	0.0	Rig-Up Equipment
⑬	0.0	Crew Leave Yard
⑭	0.0	Pre-Convoy Safety Meeting
⑮	0.0	Check Weight
⑯	0.0	Pump Lead Cement
⑰	0.0	Pressure Up Well
⑱	0.0	Pump Displacement
⑲	0.0	Reverse Circ Well
20	0.0	Pressure Up Well
21	0.0	Call Out
22	0.0	Pressure Up Annulus
23	0.0	Prime Lines
24	0.0	End Job
25	0.0	Assessment Of Location Safety Meeting
26	0.0	Pre-Job Safety Meeting

2.0 Real-Time Job Summary

2.1 Job Event Log

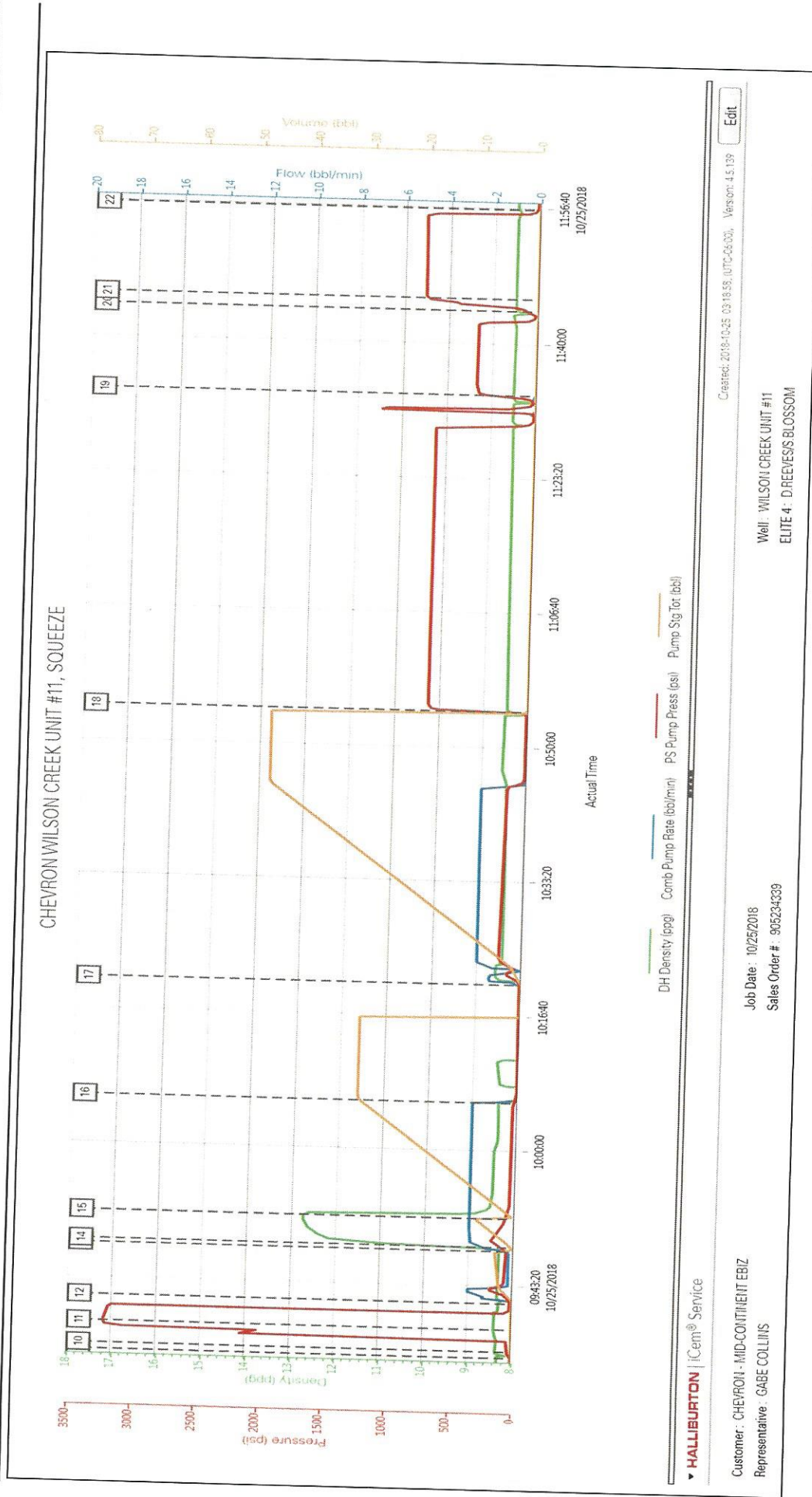
Type	Seq. No.	Graph Label	Date	Time	Source	DH Density (ppg)	Comb Pump Rate (bbl/min)	PS Pump Press (psi)	Pump Stg Tot (bbl)	Comments
Event	1	Call Out	10/25/2018	01:30:00	USER					REQUESTED ON LOCATION @ 07:30
Event	2	Pre-Convoy Safety Meeting	10/25/2018	02:45:00	USER					ALL HES PRESENT
Event	3	Crew Leave Yard	10/25/2018	03:00:00	USER					1 HT 400 PUMP TRUCK E4, 1 660 BULK TRUCK, 1 550 SERVICE PICKUP
Event	4	Arrive At Loc	10/25/2018	07:00:00	USER					RIG WAS HAVING SAFETY MEETING WHEN HES ARRIVED AT LOCATION
Event	5	Assessment Of Location Safety Meeting	10/25/2018	07:10:00	USER					MET WITH COMP REP, AND WENT OVER NUMBERS AND JOB PROCEDURE. WALKED AROUND LOCATION AND COLLECTED WATER SAMPLE (PH- 7.0, CHLORIDES- 500, TEMP- 52F). COMP REP WAS OFFERED SDS FOR ALL CHEMICALS USED BY HES.
Event	6	Pre-Rig Up Safety Meeting	10/25/2018	07:20:00	USER					ALL HES PRESENT
Event	7	Rig-Up Equipment	10/25/2018	07:30:00	USER					HES RIGGED UP 1 HT400 PUMP TRUCK, 1 660 BULK TRUCK, 2" DISCHARGE IRON, AND 4" SUCTION HOSE WITHOUT ENTERING RED ZONE.
Event	8	Pre-Job Safety Meeting	10/25/2018	09:30:00	USER					ALL HES EMPLOYEES AND RIG CREW PRESENT. CALIBRATED MUD SCALES ON WATER.
Event	9	Start Job	10/25/2018	09:34:24	COM6					7" 24# CSG, TUBING 2 7/8" 6.5#, BRIDGE PLUG @ 5672', LEAKS FROM 5551' TO 5583', MUD 8.5 PPG,
Event	10	Prime Lines	10/25/2018	09:35:11	USER	8.33		83	2	FILLED WITH FRESH WATER VIA 6X5

Event	11	Test Lines	10/25/2018	09:37:55	COM6	3230	HELD PRESSURE AT 3230
Event	12	Pump H2O Spacer	10/25/2018	09:41:09	COM6	8.33 2.0 300 3	PUMPED 3 BBLS FRESH WATER TO ESTABLISH RETURNS
Event	13	Pump Lead Cement	10/25/2018	09:47:35	COM6	12.8 2.0 120 7.5	50 SKS OF SQUEEZECMT CMT 12.8 PPG, .84 FT3/SK, 4.34 GAL/SK. 10 GALS OF HALAD 413 AND 5 GALS OF D-AIR 3000 FOR MIX WATER.
Event	14	Check Weight	10/25/2018	09:48:05	COM6		WEIGHT VERIFIED VIA PRESSUREIZED MUD SCALES
Event	15	Pump Displacement	10/25/2018	09:51:36	COM6	8.33 2.0 50 30	31BBLS OF FRESH WATER. SHUTDOWN AT 30BBLS TO BALANCE. ONCE SHUT DOWN WELL STUCKED .5 BBL.
Event	16	Shutdown	10/25/2018	10:05:54	USER		RIG POOP. PULLED 1 JOINT AND 4 STANDS DRY.
Event	17	Reverse Circ Well	10/25/2018	10:20:36	COM6	8.33 2.0 180 46	REVERSED 46BBLS. .5BBL OF CEMENT BACK.
Event	18	Pressure Up Well	10/25/2018	10:54:24	USER	8.33 800 .5	PUMPED .5 INTO WELL AND PRESSURED UP TO 800PSI. HELD PRESSURE FOR 30 MINUTES. SHUT IN WELL WITH 795 PSI.
Event	19	Pressure Up Annulus	10/25/2018	11:33:37	USER	8.33 500 .1	PRESSURED UP BACK SIDE TO 500PSI AND HELD FOR 10 MINS
Event	20	Other	10/25/2018	11:44:03	USER	120	OPENED WELL BACK TO TRUCK AND PRESSURE CAME UP TO 120PSI
Event	21	Pressure Up Well	10/25/2018	11:45:31	USER	8.33 900 .1	PUMPED .2BBLS INTO WELL AND BROUGHT PRESSURE UP TO 900PSI. HELD FOR TEN MINS.
Event	22	End Job	10/25/2018	11:56:30	COM6		SHUT IN WELL WITH 900PSI. USED 40# OF SUGAR
Event	23	Post-Job Safety Meeting (Pre Rig-Down)	10/25/2018	12:00:00	USER		ALL HES PRESENT

Event	24	Rig Down Lines	10/25/2018	12:10:00	USER	ALL HES PRESENT
Event	25	Pre-Convoy Safety Meeting	10/25/2018	13:00:00	USER	ALL HES PRESENT
Event	26	Crew Leave Location	10/25/2018	13:10:00	USER	THANK YOU FOR CHOOSING HALLIBURTON CEMENT, SHAWN BLOSSOM AND CREW

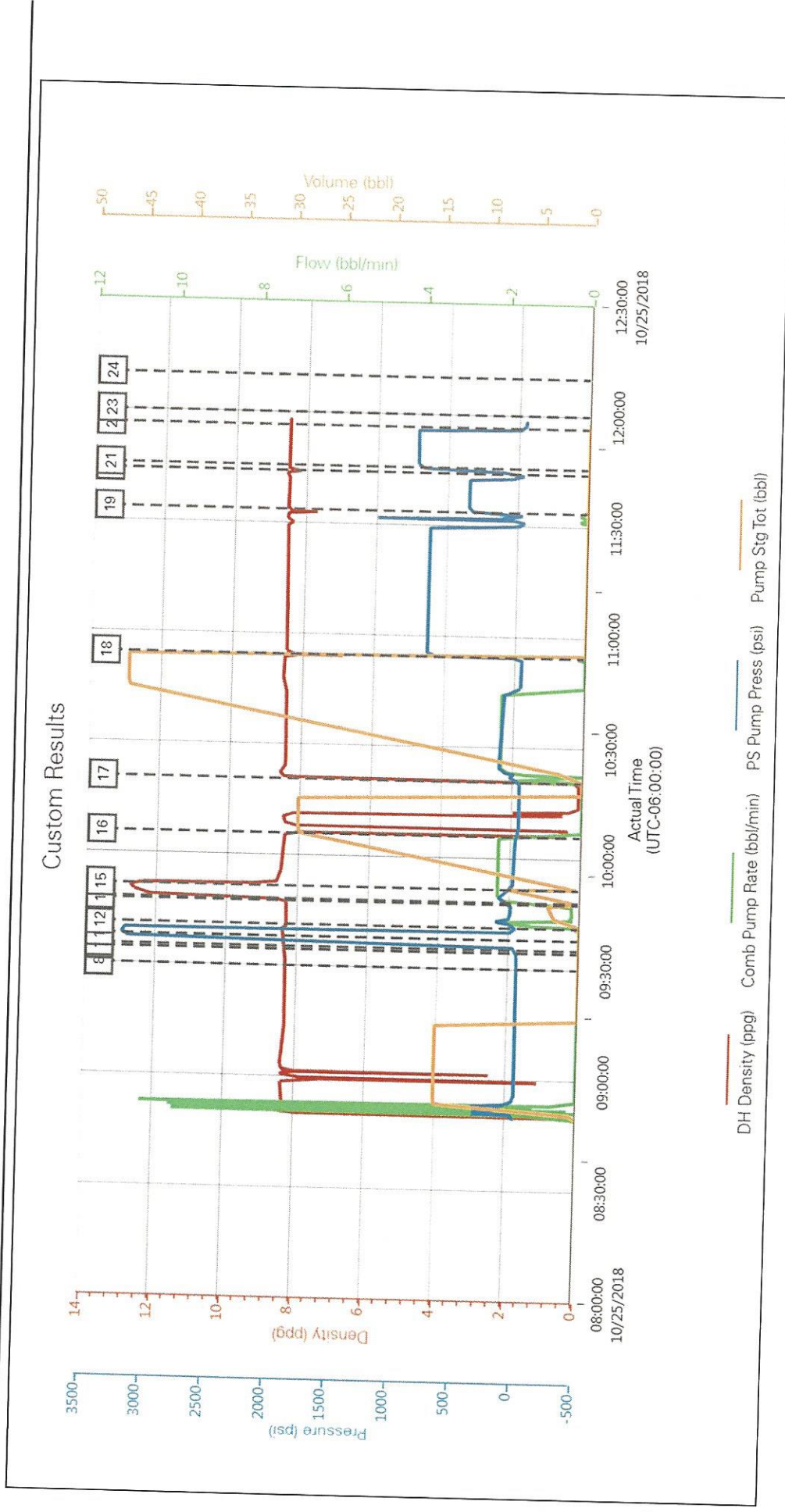
3.0 Attachments

3.1 CHART .png



4.0 Custom Graphs

4.1 Custom Graph



5.0 Appendix

5.1 3D Wellbore Schematic

