

HALLIBURTON

Customer: CHEVRON - MID-CONTINENT EBZ
 Job: 905226089
 Case: Chevron Squeeze Willson Creek #1 | SO#: 90226089

PUMPING THE JOB												
Event	11	Start Job	Start Job	10/22/201	8	11:36:00	USER	-10.00	8.37	0.00	39.6	PUMP 3 BBLS AHEAD TO FILL PUMPS AND LINES.
Event	12	Pressure Test	Pressure Test	10/22/201	8	11:39:00	USER	1807.00	8.42	0.00	1.5	PRESSURE TEST 500 KICK OUT
Event	13	Pressure Test	Pressure Test	10/22/201	8	11:40:00	USER	5404.00	8.50	0.00	1.5	PRESSURE TEST 5000
Event	14	Other	Injection Test	10/22/201	8	11:45:00	USER	-3.00	8.38	0.70	1.5	PUMP ADDITIONAL 8 BBLS OF H2O TO CATCH PRESSURE, 3 BPM 685 PSI
Event	15	Pump Cement	Pump Cement	10/22/201	8	12:09:51	USER	-16.00	8.30	0.60	0.0	PUMP 200 SKS OF SQUEEZE CEM @ 15.8 PPg., YLD 1.15 FT/SK., WR 5.03 GAL/SK PUMPED AT 3 BPM, 50 GAL HALAD 413 AND 8 GAL HR6L ADDED TO MIX WATER.
Event	16	Pump Displacement	Pump Displacement	10/22/201	8	12:23:18	USER	96.00	15.64	3.00	0.5	PUMP 33 BBLS OF H2O DISPLACEMENT
Event	17	Comment	Comment	10/22/201	8	12:28:50	USER	34.00	8.20	3.00	17.3	CATCH PRESSURE 19 BBLS INTO DISPLACEMENT
Event	18	Shutdown	Shutdown	10/22/201	8	12:33:44	USER	1024.00	8.22	2.80	32.1	SHUTDOWN WATCH PRESSURE TO SEE WHAT ITS DOING PER COMPANY MAN
Event	19	Pump Displacement	Pump Displacement	10/22/201	8	12:38:31	USER	269.00	8.20	0.70	32.2	PUMP 1.5 BBLS MORE FOR FINAL DISPLACEMENT.
Event	20	Shutdown	Shutdown	10/22/201	8	12:39:23	USER	558.00	8.21	1.10	33.7	SHUTDOWN, GOING TO WATCH THE PRESSURE AND SEE WHAT IT DOES. THE PRESSURE WAS SLOWLY BLEEDING OFF THEY ARE GOING SHUT IT IN WITH 250 PSI ON IT.
Event	21	End Job	End Job	10/22/201	8	12:58:00	USER	168.00	8.19	0.00	33.7	END JOB BLEED OFF PRESSURE AND RIG DOWN

iCem Service
 (v. 4.2.393)

Created: Monday, October 22, 2018

HALLIBURTON

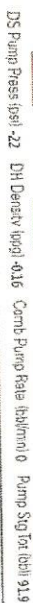
Customer: CHEVRON - MID-CONTINENT EBIZ

Job: 905226089

Case: Chevron Squeeze Willson Creek #1 | SO#: 90226089

Event	22	Pre-Rig Down Safety Meeting	Pre-Rig Down Safety Meeting	10/22/201	8	13:00:00	USER	-16.00	8.16	0.00	33.7	HES AND RIG CREW DISCUSS THE HAZARDS OF RIGGING DOWN EQUIPMENT
Event	23	Rig-Down Equipment	Rig-Down Equipment	10/22/201	8	13:05:00	USER	22.00	8.19	2.70	51.0	RIG DOWN EQUIPMENT
Event	24	Rig-Down Completed	Rig-Down Completed	10/22/201	8	13:30:00	USER					RIG DOWN COMPLETE
Event	25	Depart Location Safety Meeting	Depart Location Safety Meeting	10/22/201	8	13:40:00	USER					HES CREW DISCUSS THE HAZARDS OF DRIVING
Event	26	Depart Location for Service Center or Other Site	Depart Location for Service Center or Other Site	10/22/201	8	13:50:00	USER					HES CREW DEPART LOCATION
Event	27	Job Complete	Job Complete	10/22/201	8	14:00:00	USER					JOB COMPLETE, THANK YOU FROM HALLIBURTON

3.1 Chevron Squeeze Willson Creek #1-Custom Results.png



- 27 Job Complete: ☐ Yes ☒ No

Ceiled: 2013-02-22 10:54:43, Version: 42391

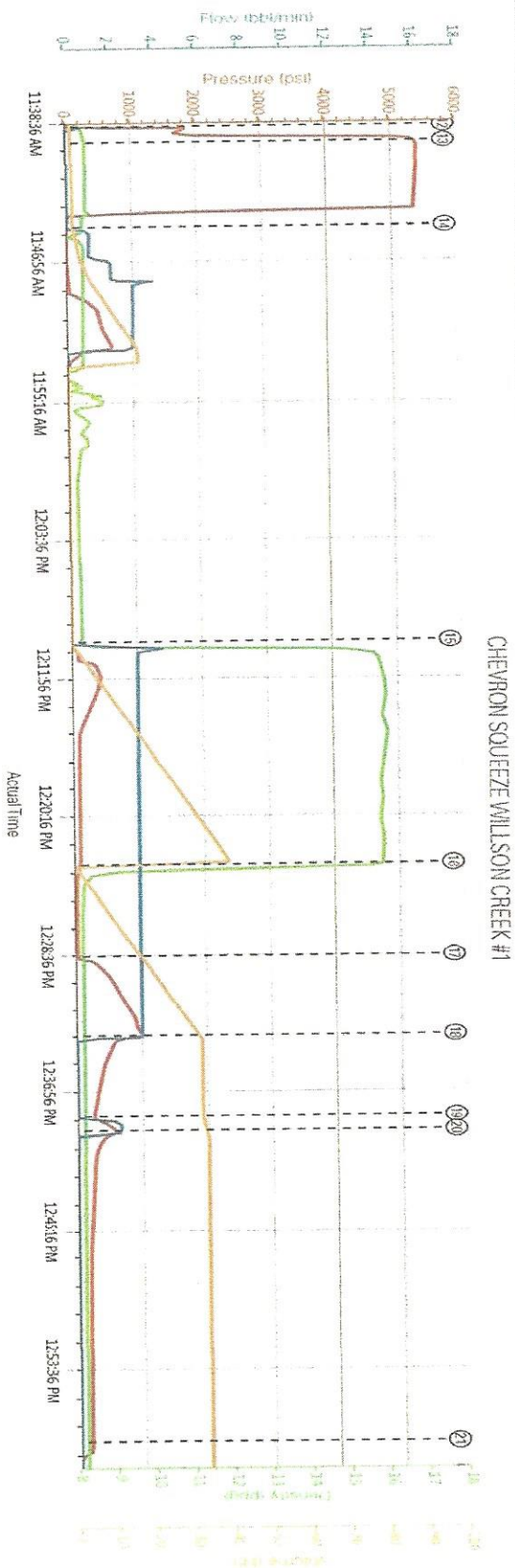
Edm

Well #1
Elite #2: Eric Fuchs / Ke Smith

HALLIBURTON

Customer: CHEVRON - MID-CONTINENT EBIZ
Job: 905226089
Case: Chevron Squeeze Willson Creek #1 | SOH: 90226089

3.2 Chevron Squeeze Willson Creek #1-Custom Results (1).png



DS Pump Press (psi): -22 DH Density (cp): -0.16 Comb Pump Rate (bbl/min): 0 Pump Sg (at 100%): 91.9

1 Call Out (11:38:36 AM)	25 Pressure Test (11:54:16 AM)	26 Pump Displacement (12:03:36 PM)	27 Depart Location Safety Meeting (12:03:36 PM)
2 Depart Yard Safety Meeting (11:40:36 AM)	26 Injection Test (11:55:16 AM)	28 Shutdown (12:03:36 PM)	28 Depart Location for Service Center or Other Site (12:03:36 PM)
3 Depart from Service Center or Other Site (11:45:36 AM)	26 Pump Cement (11:55:16 AM)	21 End Job (12:03:36 PM)	27 Job Complete (12:03:36 PM)
4 Arrive At Location (11:45:36 AM)	26 Pre-Rig Down Safety Meeting (11:55:16 AM)	22 Pre-Rig Down Safety Meeting (12:03:36 PM)	
5 Assessment Of Location Safety Meeting (11:45:36 AM)	26 Start Job (11:55:16 AM)	23 Rig Down Equipment (12:03:36 PM)	
6 Pre-Rig Up Safety Meeting (11:45:36 AM)	26 Pressure Test (11:55:16 AM)	24 Rig Down Completed (12:03:36 PM)	

HALIBURTON iCem Service

Customer: CHEVRON - MID-CONTINENT EBIZ
Representative: Eric Fuchs

Job Date: 10/22/2018 11:05:40 AM
Sales Order #: 90226089

Well: #1
Elite #2: Eric Fuchs / Kc Smith

Created: 2018-10-22 10:54:03, Version: 4.2.393

Edit

iCem Service

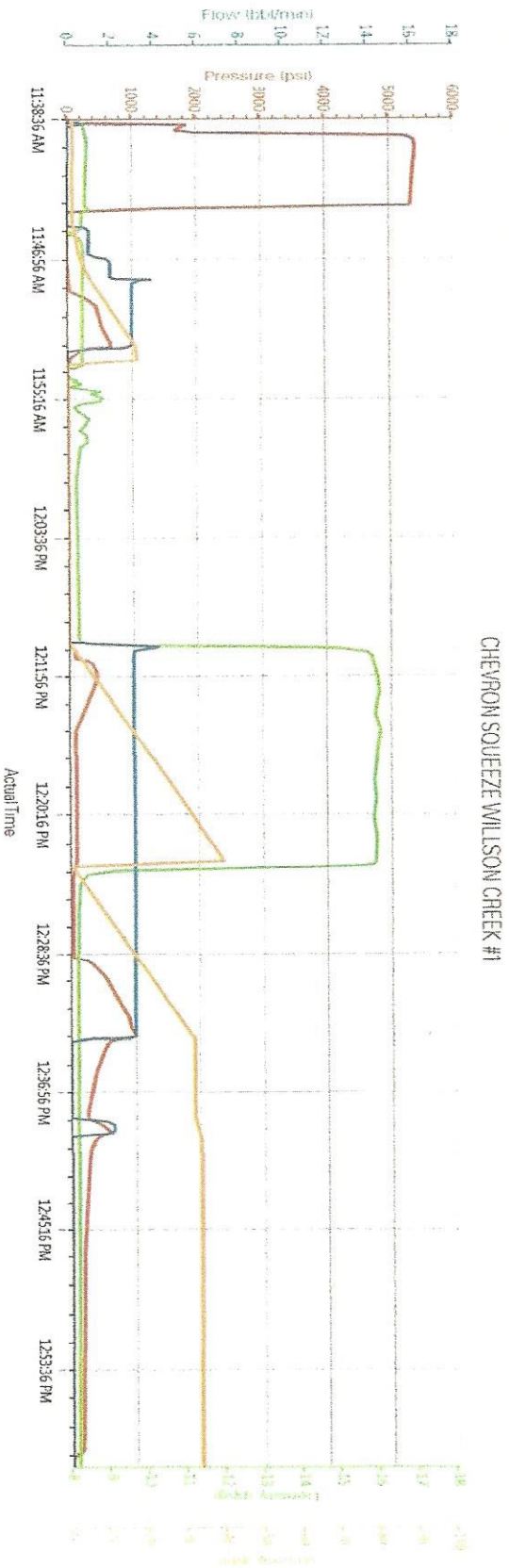
(V-4.2.393)

Created: Monday, October 22, 2018

HALLIBURTON

Customer: CHEVRON - MID-CONTINENT EBIZ
Job: 905226089
Case: Chevron Squeeze Willson Creek #1 | SO#: 90226089

3.3 Chevron Squeeze Willson Creek #1-Custom Results (2).png



DS Pump Press (psi) -22 DI Density (g/cc) -0.16 Comb Pump Rate (bbl/min) 0 Pump Sol (lb) 91.9

HALLIBURTON iCem® Service

Customer: CHEVRON - MID-CONTINENT EBIZ
Representative: Eric Fuchs

Job Date: 10/22/2018 11:06:40 AM
Sales Order #: 90226089

Well #1
Elite #2: Eric Fuchs / KC Smith

Created: 2018-10-22 10:54:43

Edit

iCem® Service

(v. 4.2.393)

Created: Monday, October 22, 2018