

T5N, R61W, 6th P.M.

HIGHPOINT OPERATING CORPORATION

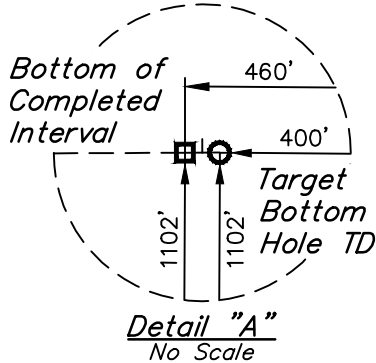
ANSCHUTZ EQUUS FARMS FED 5-61-34 NESE PAD

#5-61-35-4956B

NE 1/4 SE 1/4, SECTION 34, T5N, R61W, 6th P.M.
WELD COUNTY, COLORADO

BASIS OF BEARINGS
BASIS OF ELEVATION

SPOT ELEVATION LOCATED AT THE NORTHEAST CORNER OF SECTION 24, T5N, R62W, 6th P.M. TAKEN FROM THE POINT OF ROCKS, QUADRANGLE, COLORADO, WELD COUNTY, 7.5 MINUTE QUAD (TOPOGRAPHIC MAP) PUBLISHED BY THE UNITED STATES DEPARTMENT OF THE INTERIOR, GEOLOGICAL SURVEY. SAID ELEVATION IS MARKED AS BEING 4530 FEET.

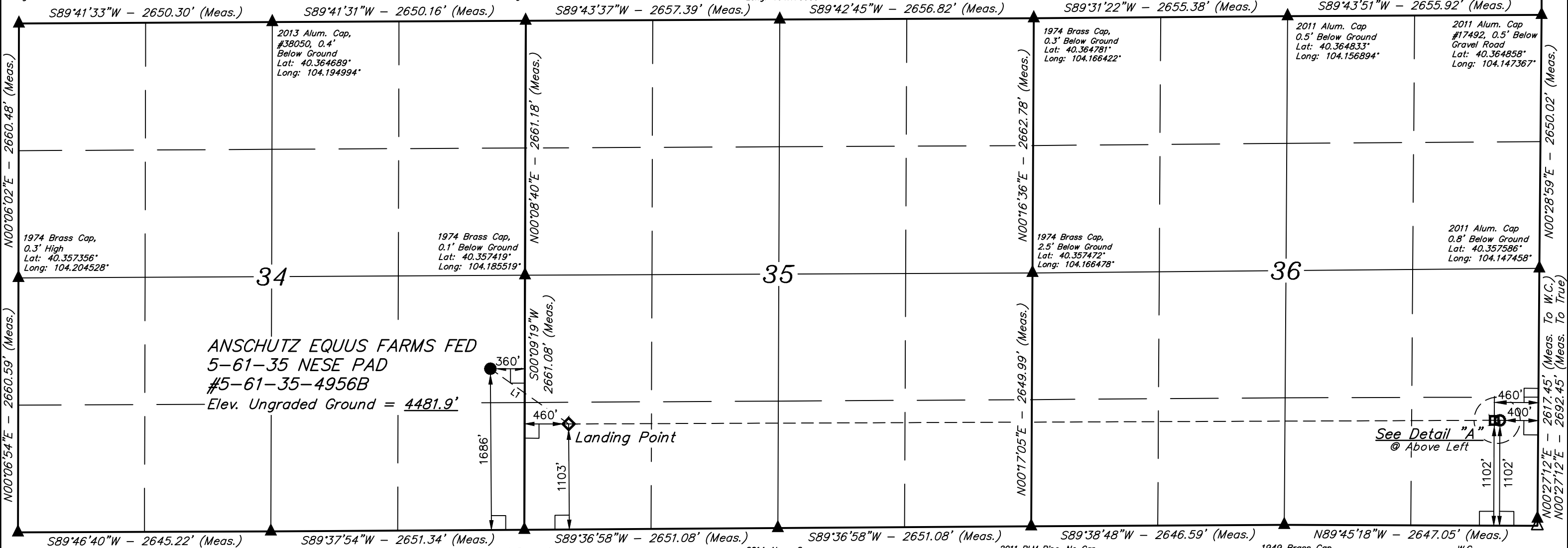


2011 Alum. Cap,
0.4' Below Ground
Lat: 40.364656°
Long: 104.204503°

Detail "A"
No Scale

Brass Cap,
#7242, 1.5'
Below Ground
Lat: 40.364722°
Long: 104.185489°

1974 Brass Cap,
0.5' Below Ground
Lat: 40.364750°
Long: 104.175953°



ANSCHUTZ EQUUS FARMS FED
5-61-35 NESE PAD
#5-61-35-4956B
Elev. Ungraded Ground = 4481.9'

LINE TABLE		
LINE	DIRECTION	LENGTH
L1	S54°47'23"E	1001.74'
L2	S89°45'18"E	60.00'

1949 Brass Cap,
0.2' High
Lat: 40.350053°
Long: 104.204553°

1949 Brass Cap,
0.3' High
Lat: 40.350075°
Long: 104.195064°

1949 Brass Cap,
Flush W/ Ground
Lat: 40.350117°
Long: 104.185553°

2014 Alum. Cap,
#28285, 0.8'
Below Ground
Lat: 40.350158°
Long: 104.176044°

2011 BLM Pipe, No Cap,
with UELS Alum. Cap,
0.5' Below Ground
Lat: 40.350200°
Long: 104.166536°

1949 Brass Cap,
0.2' Below Ground
Lat: 40.350236°
Long: 104.157042°

W.C.
2008 Alum. Cap,
#37897
Lat: 40.350403°
Long: 104.147544°

True Position
Lat: 40.350197°
Long: 104.147548°

LEGEND:

- = 90° SYMBOL
- = PROPOSED WELLHEAD.
- = LANDING POINT.
- = BOTTOM OF COMPLETED INTERVAL.
- = TARGET BOTTOM HOLE TD.
- = SECTION CORNERS LOCATED. (NAD 83)
- = SECTION CORNERS RE-ESTABLISHED. (Not Set on Ground.) (NAD 83)



PDOP = 1.4

NAD 83 (SURFACE LOCATION)	NAD 83 (LANDING POINT)	NAD 83 (BTM OF COMPLETED INT.)	NAD 83 (TARGET BOTTOM HOLE)
LATITUDE = 40°21'17.06" (40.354739) LONGITUDE = 104°11'12.57" (104.186824)	LATITUDE = 40°21'11.35" (40.353152) LONGITUDE = 104°11'02.00" (104.183890)	LATITUDE = 40°21'11.62" (40.353228) LONGITUDE = 104°08'56.98" (104.149162)	LATITUDE = 40°21'11.62" (40.353227) LONGITUDE = 104°08'56.21" (104.148947)
NAD 27 (SURFACE LOCATION)	NAD 27 (LANDING POINT)	NAD 27 (BTM OF COMPLETED INT.)	NAD 27 (TARGET BOTTOM HOLE)
LATITUDE = 40°21'17.12" (40.354757) LONGITUDE = 104°11'10.75" (104.186318)	LATITUDE = 40°21'11.41" (40.353170) LONGITUDE = 104°11'00.18" (104.183384)	LATITUDE = 40°21'11.69" (40.353246) LONGITUDE = 104°08'55.16" (104.148656)	LATITUDE = 40°21'11.68" (40.353245) LONGITUDE = 104°08'54.39" (104.148441)
STATE PLANE NAD 83 (CO. NORTH)	STATE PLANE NAD 83 (CO. NORTH)	STATE PLANE NAD 83 (CO. NORTH)	STATE PLANE NAD 83 (CO. NORTH)
N: 1374781.66 E: 3365963.91	N: 1374215.72 E: 3366790.14	N: 1374389.17 E: 3376467.44	N: 1374389.75 E: 3376527.43
STATE PLANE NAD 27 (CO. NORTH)	STATE PLANE NAD 27 (CO. NORTH)	STATE PLANE NAD 27 (CO. NORTH)	STATE PLANE NAD 27 (CO. NORTH)
N: 374783.66 E: 2366114.49	N: 374217.73 E: 2366940.75	N: 374391.16 E: 2376618.31	N: 374391.74 E: 2376678.29



UELLS, LLC
Corporate Office * 85 South 200 East
Vernal, UT 84078 * (435) 789-1017

SURVEYED BY	JAMES FRESHWATER, N.W.	09-17-18	SCALE
DRAWN BY	K.B.	09-20-18	1" = 1000'

WELL LOCATION PLAT