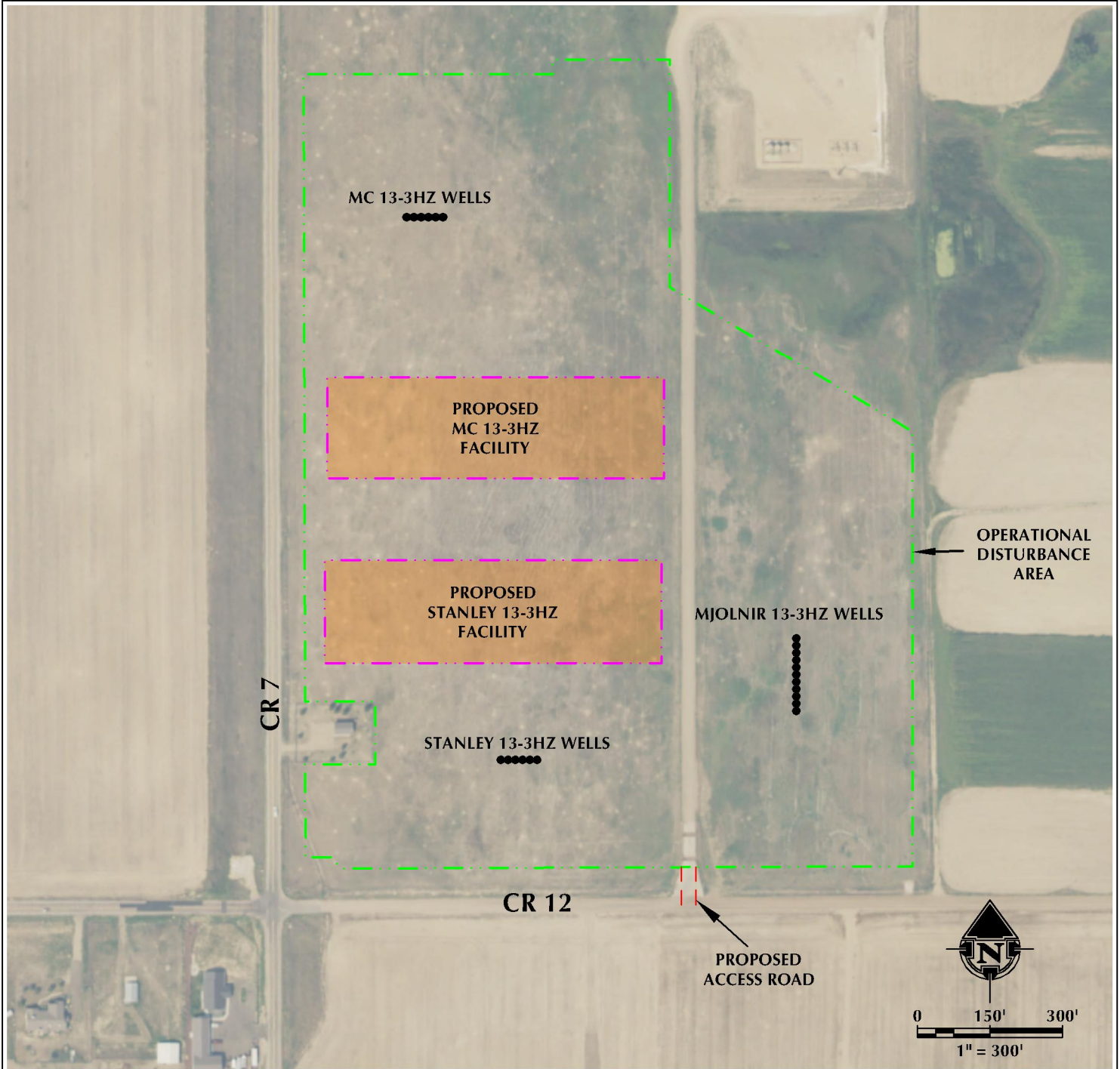


# HAMMER 3-5HZ ACCESS MAP

W1/2 SW1/4 SECTION 3, TOWNSHIP 1 NORTH, RANGE 68 WEST, 6TH P.M.



## LEGEND

- PROPOSED WELL
- ACCESS
- PROPOSED FACILITY
- DISTURBANCE AREA

INTERSECTION OF  
ACCESS ROAD AND CR 12

LATITUDE: 40.073063°

LONGITUDE: -104.995871°



**609 CONSULTING, LLC**  
LOVELAND OFFICE  
6706 North Franklin Avenue  
Loveland, Colorado 80538  
Phone: 970-776-4331

SHERIDAN OFFICE  
1095 Saberton Avenue  
Sheridan, Wyoming 82801  
Phone: 307-674-0609

DATE SURVEYED: 7/16/18  
DATE: 8/9/18  
DRAFTER: CDR  
REVISED:

DATA SOURCES:  
- AERIAL COURTESY OF ESRI, INC.

PREPARED FOR:  
**Kerr-McGee Oil & Gas Onshore L.P.**