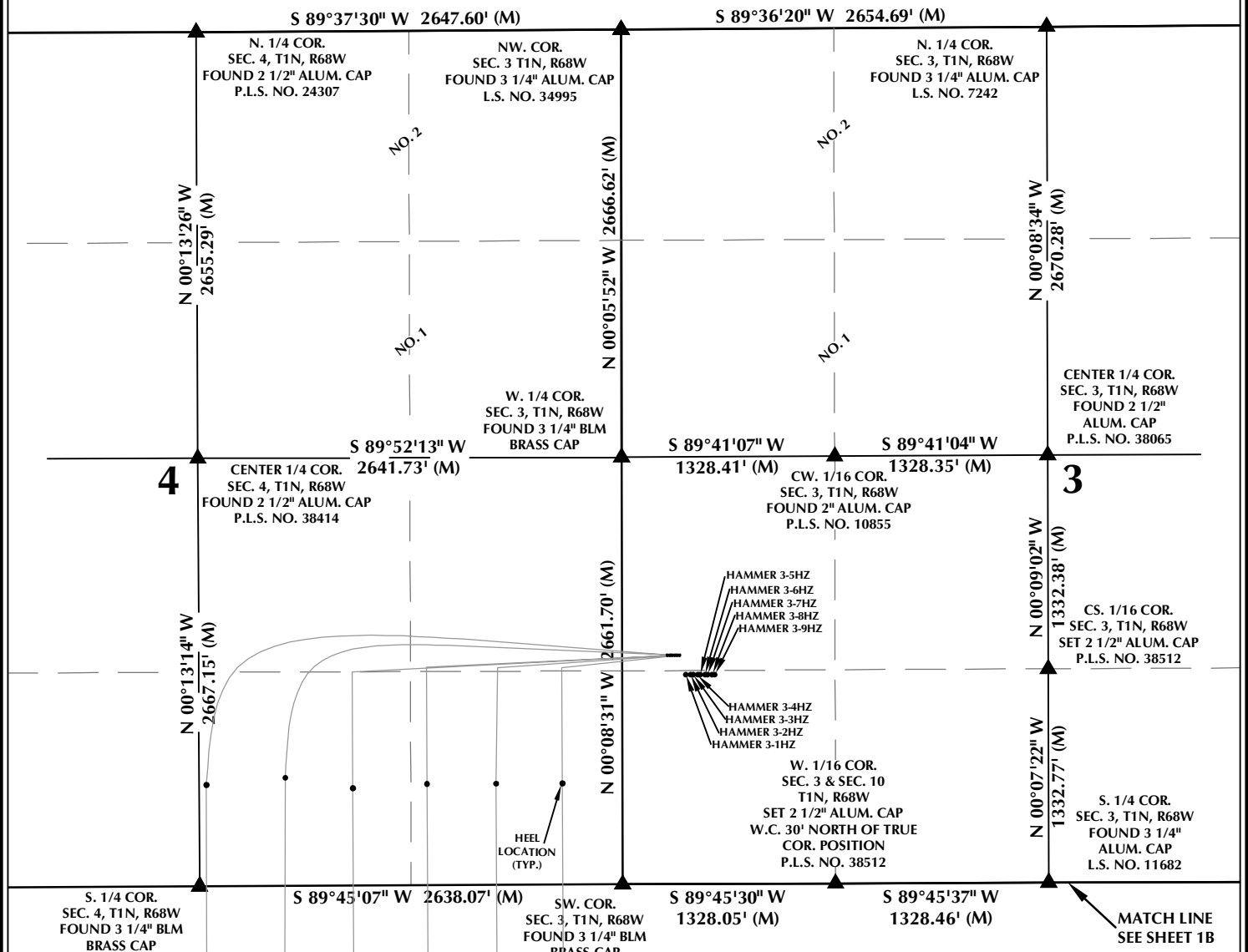


MULTI-WELL PLAN SECTIONS 3 & 4, T1N, R68W



WELL NOTES:

MC 3-1HZ
SURFACE: 1427' FSL, 282' FWL, SEC. 3
BOTTOM HOLE: 50' FSL, 2568' FEL, SEC. 16

MC 3-2HZ
SURFACE: 1427' FSL, 297' FWL, SEC. 3
BOTTOM HOLE: 50' FSL, 2127' FEL, SEC. 16

MC 3-3HZ
SURFACE: 1427' FSL, 312' FWL, SEC. 3
BOTTOM HOLE: 50' FSL, 1625' FEL, SEC. 16

MC 3-4HZ
SURFACE: 1427' FSL, 327' FWL, SEC. 3
BOTTOM HOLE: 50' FSL, 1159' FEL, SEC. 16

MC 3-5HZ
SURFACE: 1427' FSL, 342' FWL, SEC. 3
BOTTOM HOLE: 50' FSL, 726' FEL, SEC. 16

MC 3-6HZ
SURFACE: 1427' FSL, 357' FWL, SEC. 3
BOTTOM HOLE: 50' FSL, 306' FEL, SEC. 16

NOTES:

- ▲ INDICATES SECTION CORNER.
- INDICATES CALCULATED CORNER.
- BASIS OF BEARING DERIVED FROM COLORADO COORDINATE SYSTEM OF 1983 NORTH ZONE.
- ALL MEASURED DISTANCES ARE GRID.
- COMBINED SCALE FACTOR: .99972335 CALCULATED FROM THE W. 1/4 CORNER OF SECTION 3, T1N, R68W.
- WELL FOOTAGES ARE MEASURED AT RIGHT ANGLES TO THE SECTION LINES.
- NO. 1 & NO. 2 AS SHOWN HEREON ARE GOVERNMENT LOTS 1 & 2 PER THE ORIGINAL GLO SURVEY.

WELL PAD - MC 13-3HZ PAD

MC 3-1HZ, MC 3-2HZ, MC 3-3HZ,
MC 3-4HZ, MC 3-5HZ & MC 3-6HZ
LOCATED IN SECTIONS 3, 4, 9 & 16
T1N, R68W, 6TH P.M.
WELD COUNTY, COLORADO

**Kerr-McGee Oil &
Gas Onshore L.P.**

1099 18th Street
Denver, Colorado 80202



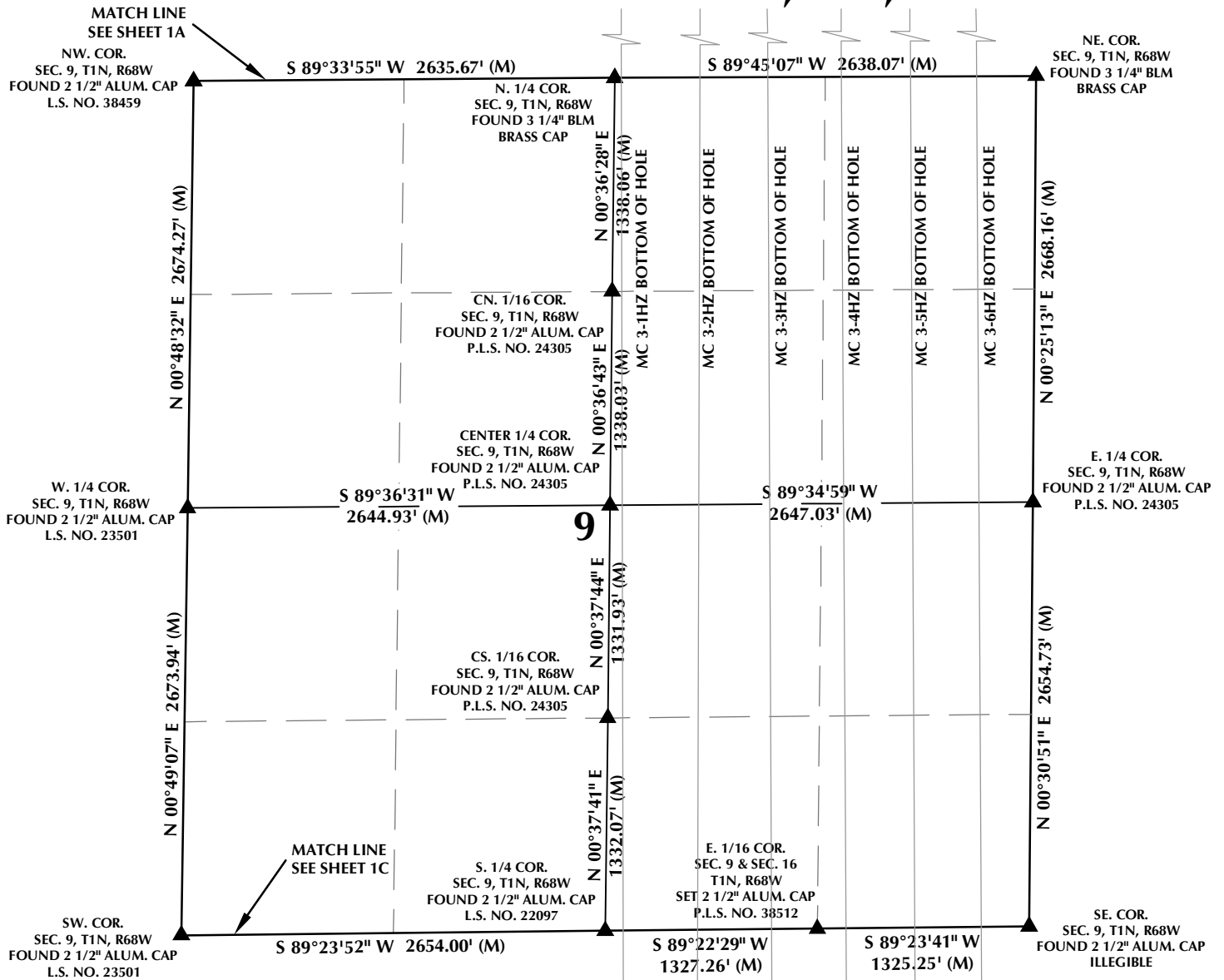
CONSULTING, LLC

SHERIDAN OFFICE
1095 Saberton Avenue
Sheridan, Wyoming 82801
Phone 307-674-0609

LOVELAND OFFICE
6706 North Franklin Avenue
Loveland, Colorado 80538
Phone 970-776-4331

DRAFTED BY:	LMO	CHECKED BY:	RKF	SHEET NO:
DATE DRAFTED:	8/3/18	DATE SURVEYED:	7/16/18	1A
REVISED:		FILE NAME:	14-106	1A OF 1

MULTI-WELL PLAN SECTION 9, T1N, R68W



WELL NOTES:

MC 3-1HZ
SURFACE: 1427' FSL, 282' FWL, SEC. 3
BOTTOM HOLE: 50' FSL, 2568' FEL, SEC. 16

MC 3-2HZ
SURFACE: 1427' FSL, 297' FWL, SEC. 3
BOTTOM HOLE: 50' FSL, 2127' FEL, SEC. 16

MC 3-3HZ
SURFACE: 1427' FSL, 312' FWL, SEC. 3
BOTTOM HOLE: 50' FSL, 1625' FEL, SEC. 16

MC 3-4HZ
SURFACE: 1427' FSL, 327' FWL, SEC. 3
BOTTOM HOLE: 50' FSL, 1159' FEL, SEC. 16

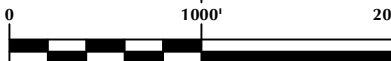
MC 3-5HZ
SURFACE: 1427' FSL, 342' FWL, SEC. 3
BOTTOM HOLE: 50' FSL, 726' FEL, SEC. 16

MC 3-6HZ
SURFACE: 1427' FSL, 357' FWL, SEC. 3
BOTTOM HOLE: 50' FSL, 306' FEL, SEC. 16

WELLBORES CONTINUE INTO
SECTION 16, T1N, R68W

NOTES:

- ▲ INDICATES SECTION CORNER.
- INDICATES CALCULATED CORNER.
- BASIS OF BEARING DERIVED FROM COLORADO COORDINATE SYSTEM OF 1983 NORTH ZONE.
- ALL MEASURED DISTANCES ARE GRID.
- COMBINED SCALE FACTOR: .99972335 CALCULATED FROM THE W. 1/4 CORNER OF SECTION 3, T1N, R68W.
- WELL FOOTAGES ARE MEASURED AT RIGHT ANGLES TO THE SECTION LINES.



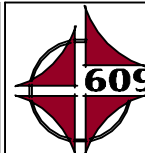
SCALE: 1" = 1000'

WELL PAD - MC 13-3HZ PAD

MC 3-1HZ, MC 3-2HZ, MC 3-3HZ,
MC 3-4HZ, MC 3-5HZ & MC 3-6HZ
LOCATED IN SECTIONS 3, 4, 9 & 16
T1N, R68W, 6TH P.M.
WELD COUNTY, COLORADO

**Kerr-McGee Oil &
Gas Onshore L.P.**

1099 18th Street
Denver, Colorado 80202



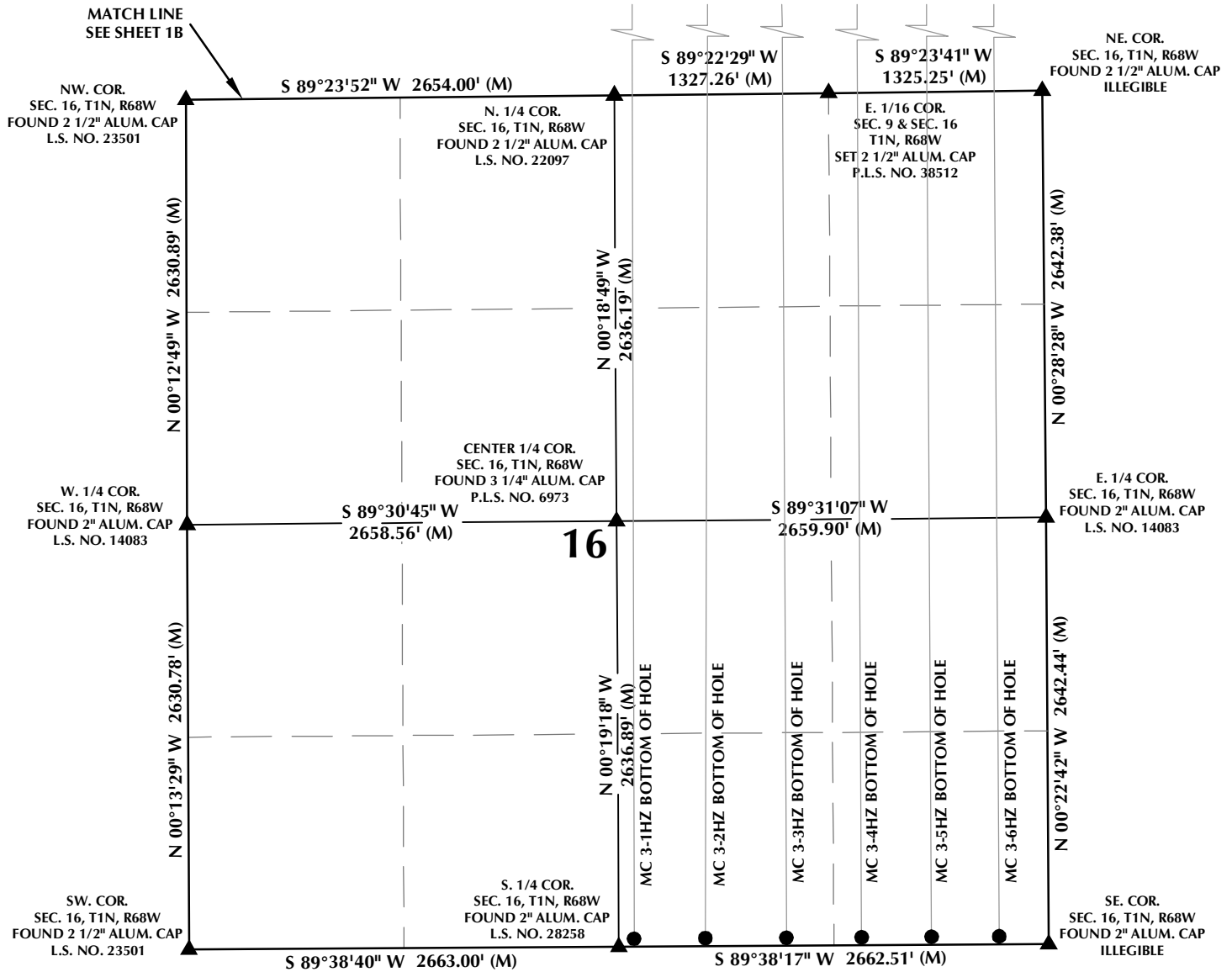
CONSULTING, LLC

SHERIDAN OFFICE
1095 Saberton Avenue
Sheridan, Wyoming 82801
Phone 307-674-0609

LOVELAND OFFICE
6706 North Franklin Avenue
Loveland, Colorado 80538
Phone 970-776-4331

DRAFTED BY:	LMO	CHECKED BY:	RKF	SHEET NO:
DATE DRAFTED:	8/3/18	DATE SURVEYED:	7/16/18	1B
REVISED:		FILE NAME:	14-106	1B OF 1

MULTI-WELL PLAN SECTION 16, T1N, R68W



WELL NOTES:

MC 3-1HZ

SURFACE: 1427' FSL, 282' FWL, SEC. 3
BOTTOM HOLE: 50' FSL, 2568' FEL, SEC. 16

MC 3-2HZ

SURFACE: 1427' FSL, 297' FWL, SEC. 3
BOTTOM HOLE: 50' FSL, 2127' FEL, SEC. 16

MC 3-3HZ

SURFACE: 1427' FSL, 312' FWL, SEC. 3
BOTTOM HOLE: 50' FSL, 1625' FEL, SEC. 16

MC 3-4HZ

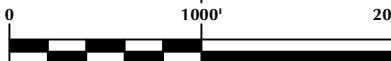
SURFACE: 1427' FSL, 327' FWL, SEC. 3
BOTTOM HOLE: 50' FSL, 1159' FEL, SEC. 16

MC 3-5HZ

SURFACE: 1427' FSL, 342' FWL, SEC. 3
BOTTOM HOLE: 50' FSL, 726' FEL, SEC. 16

MC 3-6HZ

SURFACE: 1427' FSL, 357' FWL, SEC. 3
BOTTOM HOLE: 50' FSL, 306' FEL, SEC. 16



SCALE: 1" = 1000'

NOTES:

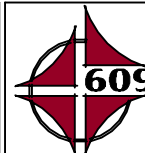
- ▲ INDICATES SECTION CORNER.
- INDICATES CALCULATED CORNER.
- BASIS OF BEARING DERIVED FROM COLORADO COORDINATE SYSTEM OF 1983 NORTH ZONE.
- ALL MEASURED DISTANCES ARE GRID.
- COMBINED SCALE FACTOR: .99972335 CALCULATED FROM THE W. 1/4 CORNER OF SECTION 3, T1N, R68W.
- WELL FOOTAGES ARE MEASURED AT RIGHT ANGLES TO THE SECTION LINES.

WELL PAD - MC 13-3HZ PAD

MC 3-1HZ, MC 3-2HZ, MC 3-3HZ,
MC 3-4HZ, MC 3-5HZ & MC 3-6HZ
LOCATED IN SECTIONS 3, 4, 9 & 16
T1N, R68W, 6TH P.M.
WELD COUNTY, COLORADO

**Kerr-McGee Oil &
Gas Onshore L.P.**

1099 18th Street
Denver, Colorado 80202



CONSULTING, LLC

SHERIDAN OFFICE
1095 Saberton Avenue
Sheridan, Wyoming 82801
Phone 307-674-0609

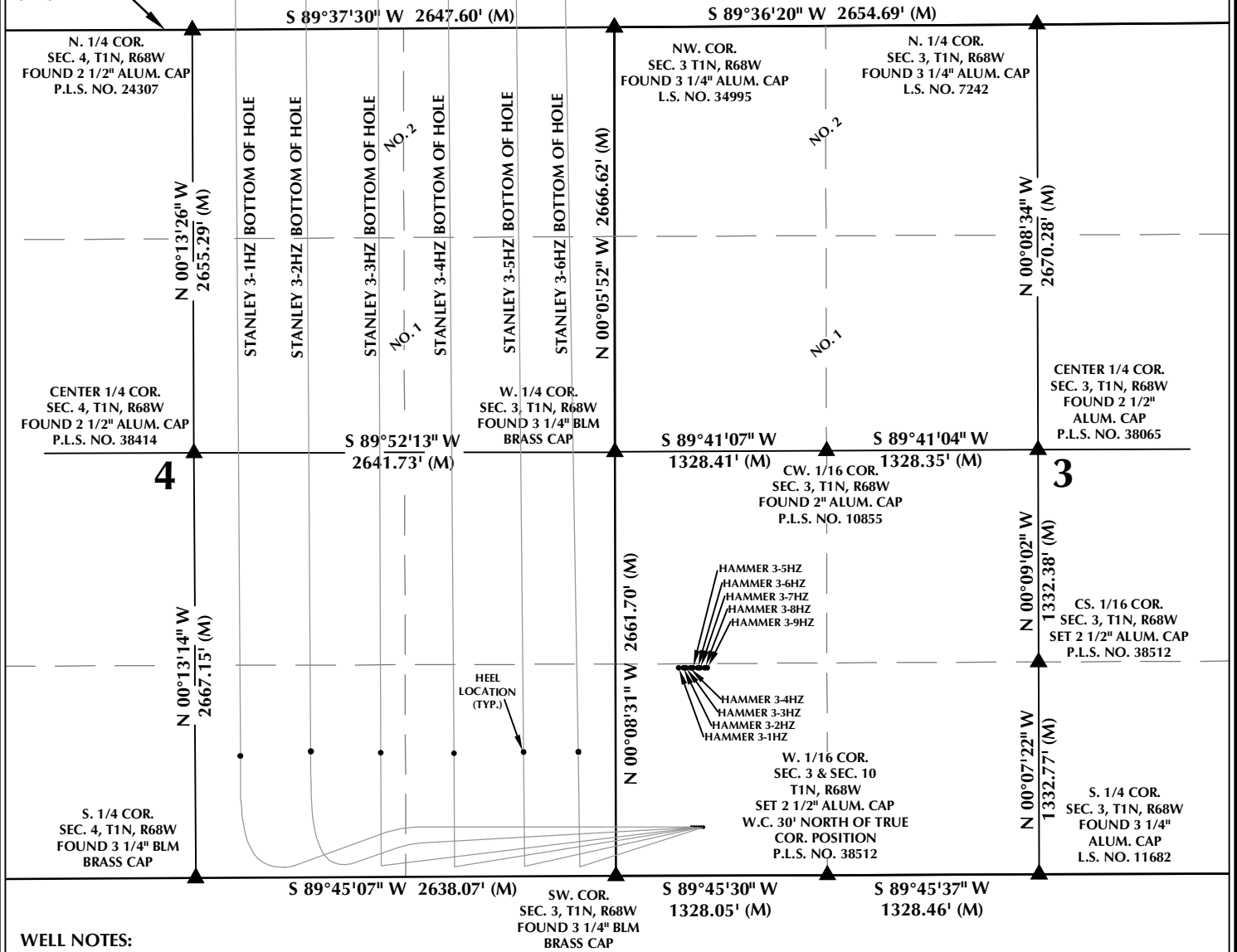
LOVELAND OFFICE
6706 North Franklin Avenue
Loveland, Colorado 80538
Phone 970-776-4331

DRAFTED BY:	LMO	CHECKED BY:	RKF	SHEET NO:
DATE DRAFTED:	8/3/18	DATE SURVEYED:	7/16/18	1C
REVISED:		FILE NAME:	14-106	1C OF 1

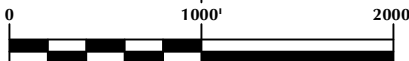
MULTI-WELL PLAN SECTIONS 3 & 4, T1N, R68W

MATCH LINE
SEE SHEET 1B

WELLBORES CONTINUE INTO
SECTION 33, T2N, R68W



GRID



SCALE: 1" = 1000'

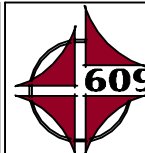
NOTES:

- ▲ INDICATES SECTION CORNER.
- INDICATES CALCULATED CORNER.
- BASIS OF BEARING DERIVED FROM COLORADO COORDINATE SYSTEM OF 1983 NORTH ZONE.
- ALL MEASURED DISTANCES ARE GRID.
- COMBINED SCALE FACTOR: .99972335 CALCULATED FROM THE W. 1/4 CORNER OF SECTION 3, T1N, R68W.
- WELL FOOTAGES ARE MEASURED AT RIGHT ANGLES TO THE SECTION LINES.
- NO. 1 & NO. 2 AS SHOWN HEREON ARE GOVERNMENT LOTS 1 & 2 PER THE ORIGINAL GLO SURVEY.

WELL PAD - STANLEY 13-3HZ PAD

STANLEY 3-1HZ, STANLEY 3-2HZ, STANLEY 3-3HZ,
STANLEY 3-4HZ, STANLEY 3-5HZ & STANLEY 3-6HZ
LOCATED IN SECTIONS 3 & 4
T1N, R68W, 6TH P.M. &
LOCATED IN SECTION 33
T2N, R68W, 6TH P.M.
WELD COUNTY, COLORADO

**Kerr-McGee Oil &
Gas Onshore L.P.**
1099 18th Street
Denver, Colorado 80202



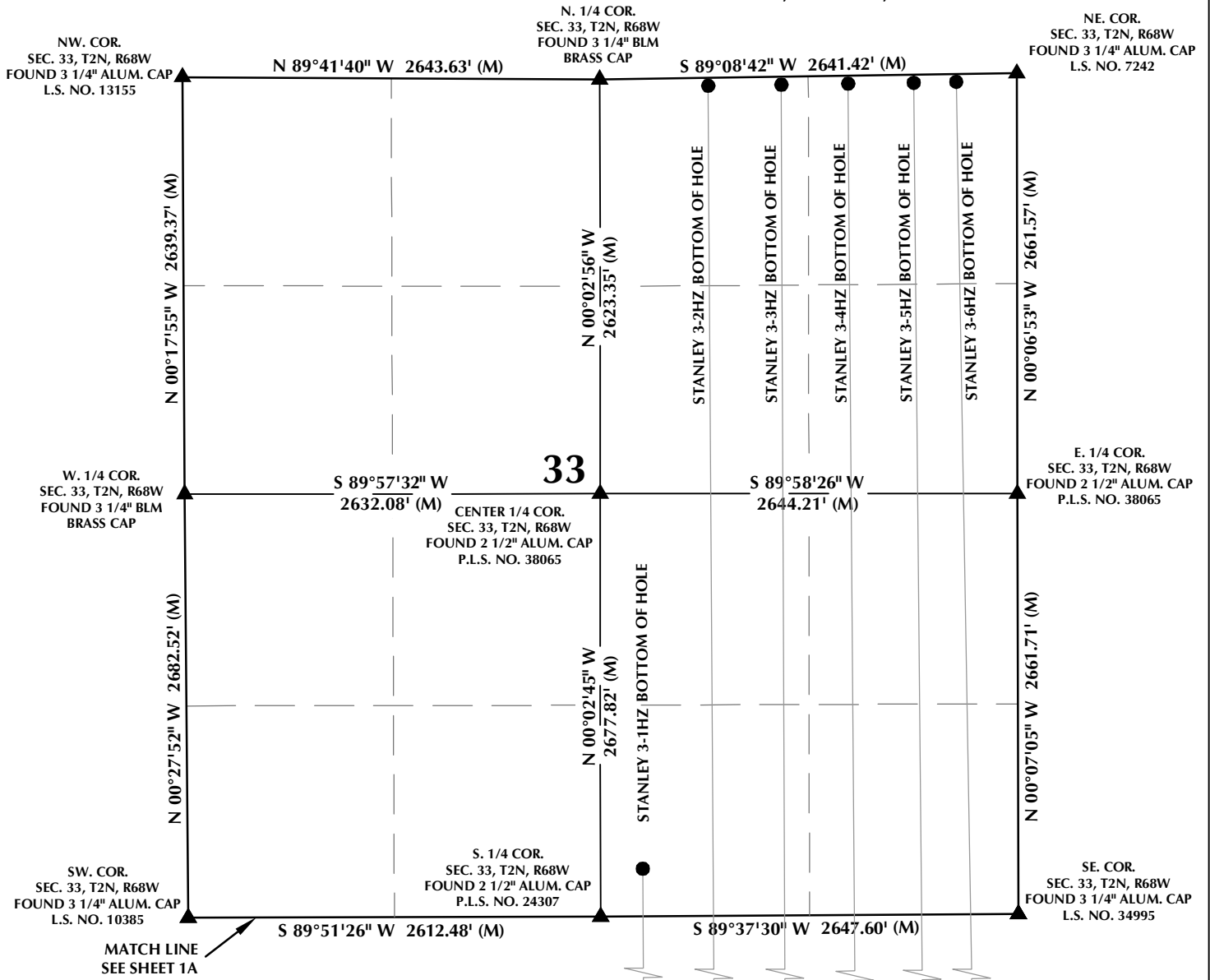
CONSULTING, LLC

SHERIDAN OFFICE
1095 Saberton Avenue
Sheridan, Wyoming 82801
Phone 307-674-0609

LOVELAND OFFICE
6706 North Franklin Avenue
Loveland, Colorado 80538
Phone 970-776-4331

DRAFTED BY:	LMO	CHECKED BY:	RKF	SHEET NO:
DATE DRAFTED:	8/3/18	DATE SURVEYED:	7/16/18	1A
REVISED:		FILE NAME:	14-106	1A OF 1

MULTI-WELL PLAN SECTION 33, T2N, R68W



WELL NOTES:

STANLEY 3-1HZ

SURFACE: 303' FSL, 474' FWL, SEC. 3, T1N, R68W

BOTTOM HOLE: 300' FSL, 2379' FEL, SEC. 33, T2N, R68W

STANLEY 3-2HZ

SURFACE: 303' FSL, 489' FWL, SEC. 3, T1N, R68W

BOTTOM HOLE: 50' FNL, 1955' FEL, SEC. 33, T2N, R68W

STANLEY 3-3HZ

SURFACE: 303' FSL, 504' FWL, SEC. 3, T1N, R68W

BOTTOM HOLE: 50' FNL, 1491' FEL, SEC. 33, T2N, R68W

STANLEY 3-4HZ

SURFACE: 303' FSL, 519' FWL, SEC. 3, T1N, R68W

BOTTOM HOLE: 50' FNL, 1068' FEL, SEC. 33, T2N, R68W

STANLEY 3-5HZ

SURFACE: 303' FSL, 534' FWL, SEC. 3, T1N, R68W

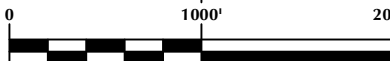
BOTTOM HOLE: 50' FNL, 651' FEL, SEC. 33, T2N, R68W

STANLEY 3-6HZ

SURFACE: 303' FSL, 549' FWL, SEC. 3, T1N, R68W

BOTTOM HOLE: 48' FNL, 382' FEL, SEC. 33, T2N, R68W

GRID



SCALE: 1" = 1000'

NOTES:

1. ▲ INDICATES SECTION CORNER.
2. ● INDICATES CALCULATED CORNER.
3. BASIS OF BEARING DERIVED FROM COLORADO COORDINATE SYSTEM OF 1983 NORTH ZONE.
4. ALL MEASURED DISTANCES ARE GRID.
5. COMBINED SCALE FACTOR: .99972335 CALCULATED FROM THE W. 1/4 CORNER OF SECTION 3, T1N, R68W.

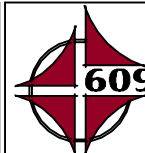
WELL FOOTAGES ARE MEASURED AT RIGHT ANGLES TO THE SECTION LINES.

WELL PAD - STANLEY 13-3HZ PAD

STANLEY 3-1HZ, STANLEY 3-2HZ, STANLEY 3-3HZ,
STANLEY 3-4HZ, STANLEY 3-5HZ & STANLEY 3-6HZ
LOCATED IN SECTIONS 3 & 4
T1N, R68W, 6TH P.M. &
LOCATED IN SECTION 33
T2N, R68W, 6TH P.M.
WELD COUNTY, COLORADO

**Kerr-McGee Oil &
Gas Onshore L.P.**

1099 18th Street
Denver, Colorado 80202



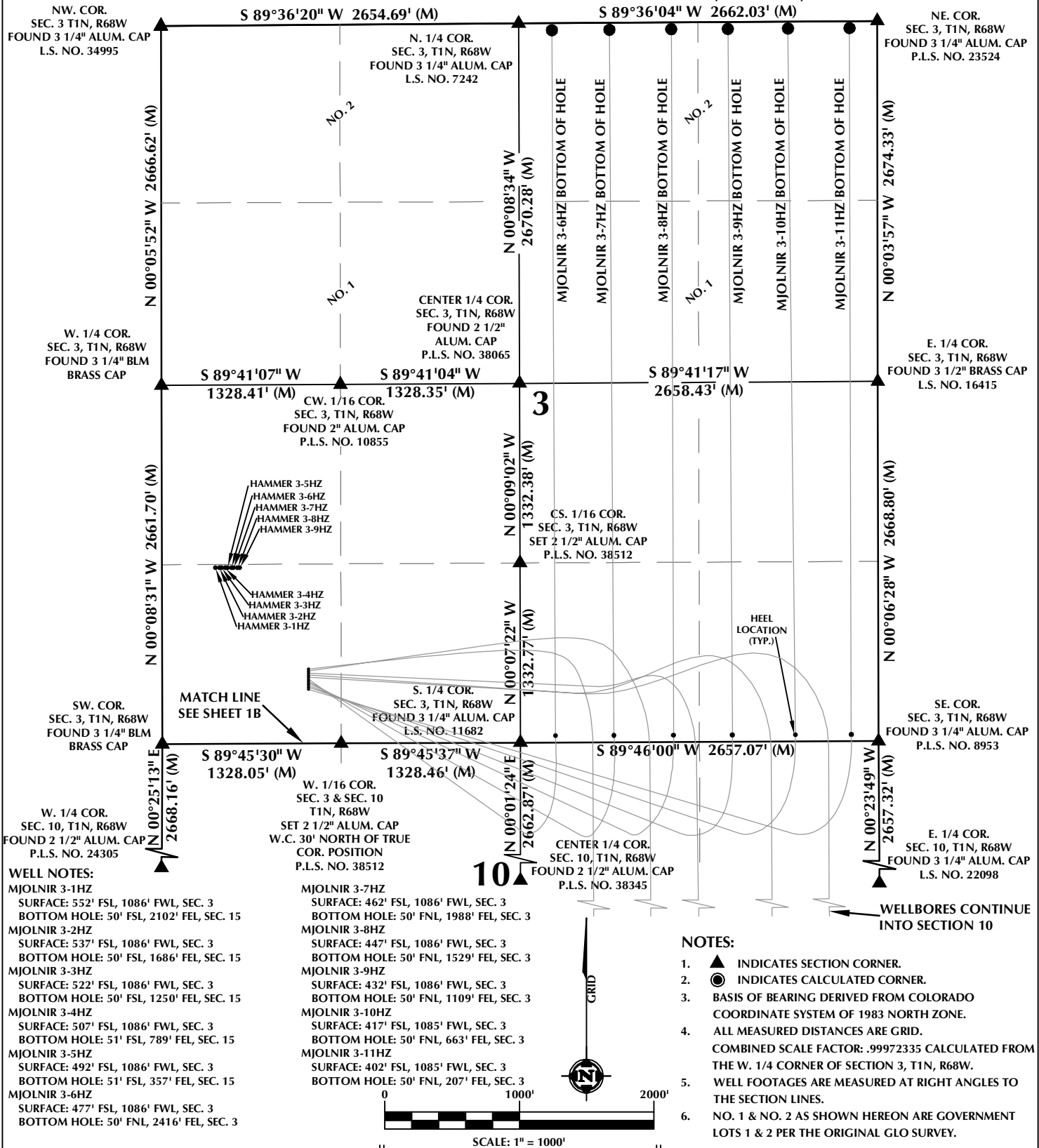
CONSULTING, LLC

SHERIDAN OFFICE
1095 Saberton Avenue
Sheridan, Wyoming 82801
Phone 307-674-0609

LOVELAND OFFICE
6706 North Franklin Avenue
Loveland, Colorado 80538
Phone 970-776-4331

DRAFTED BY:	LMO	CHECKED BY:	RKF	SHEET NO:
DATE DRAFTED:	8/3/18	DATE SURVEYED:	7/16/18	1B
REVISED:		FILE NAME:	14-106	1B OF 1

MULTI-WELL PLAN SECTIONS 3 & 10, T1N, R68W



WELL PAD - MJOLNIR 13-3HZ PAD

MJOLNIR 3-1HZ, MJOLNIR 3-2HZ, MJOLNIR 3-3HZ,
MJOLNIR 3-4HZ, MJOLNIR 3-5HZ, MJOLNIR 3-6HZ,
MJOLNIR 3-7HZ, MJOLNIR 3-8HZ, MJOLNIR 3-9HZ,
MJOLNIR 3-10HZ & MJOLNIR 3-11HZ
LOCATED IN SECTIONS 3, 10 & 15
T1N, R68W, 6TH P.M. &
WELD COUNTY, COLORADO

**Kerr-McGee Oil &
Gas Onshore L.P.**
1099 18th Street
Denver, Colorado 80202



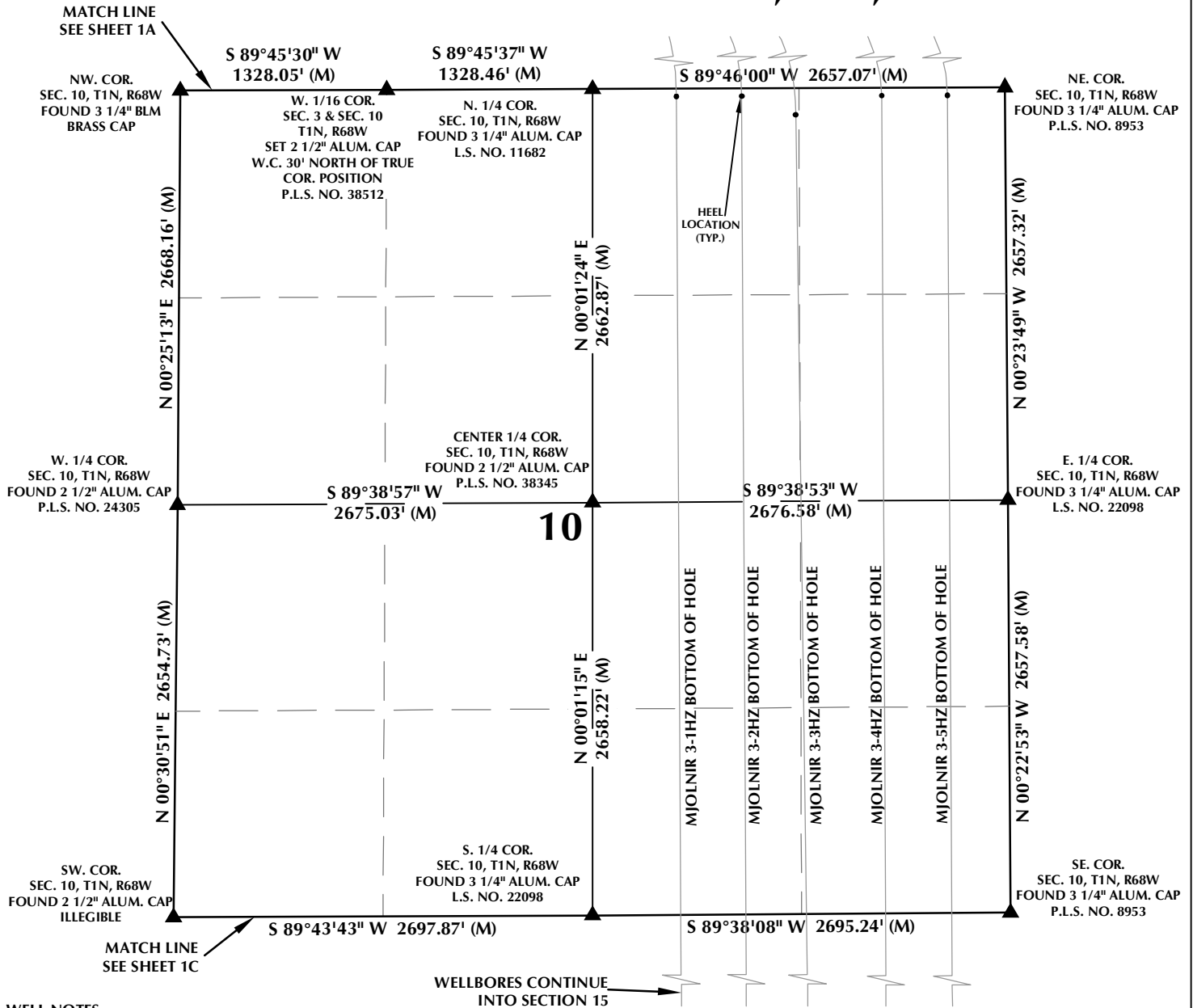
CONSULTING, LLC

SHERIDAN OFFICE
1095 Saberton Avenue
Sheridan, Wyoming 82801
Phone 307-674-0609

LOVELAND OFFICE
6706 North Franklin Avenue
Loveland, Colorado 80538
Phone 970-776-4331

DRAFTED BY:	LMO	CHECKED BY:	RKF	SHEET NO:
DATE DRAFTED:	8/9/18	DATE SURVEYED:	7/30/18	1A
REVISED:		FILE NAME:	14-106	1A OF 1

MULTI-WELL PLAN SECTION 10, T1N, R68W



WELL NOTES:

MJOLNIR 3-1HZ
SURFACE: 552' FSL, 1086' FWL, SEC. 3
BOTTOM HOLE: 50' FSL, 2102' FEL, SEC. 15

MJOLNIR 3-2HZ
SURFACE: 537' FSL, 1086' FWL, SEC. 3
BOTTOM HOLE: 50' FSL, 1686' FEL, SEC. 15

MJOLNIR 3-3HZ
SURFACE: 522' FSL, 1086' FWL, SEC. 3
BOTTOM HOLE: 50' FSL, 1250' FEL, SEC. 15

MJOLNIR 3-4HZ
SURFACE: 507' FSL, 1086' FWL, SEC. 3
BOTTOM HOLE: 51' FSL, 789' FEL, SEC. 15

MJOLNIR 3-5HZ
SURFACE: 492' FSL, 1086' FWL, SEC. 3
BOTTOM HOLE: 51' FSL, 357' FEL, SEC. 15

MJOLNIR 3-6HZ
SURFACE: 477' FSL, 1086' FWL, SEC. 3
BOTTOM HOLE: 50' FNL, 2416' FEL, SEC. 3

MJOLNIR 3-7HZ
SURFACE: 462' FSL, 1086' FWL, SEC. 3
BOTTOM HOLE: 50' FNL, 1988' FEL, SEC. 3

MJOLNIR 3-8HZ
SURFACE: 447' FSL, 1086' FWL, SEC. 3
BOTTOM HOLE: 50' FNL, 1529' FEL, SEC. 3

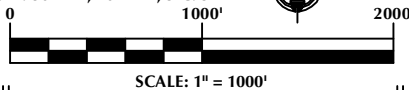
MJOLNIR 3-9HZ
SURFACE: 432' FSL, 1086' FWL, SEC. 3
BOTTOM HOLE: 50' FNL, 1109' FEL, SEC. 3

MJOLNIR 3-10HZ
SURFACE: 417' FSL, 1085' FWL, SEC. 3
BOTTOM HOLE: 50' FNL, 663' FEL, SEC. 3

MJOLNIR 3-11HZ
SURFACE: 402' FSL, 1085' FWL, SEC. 3
BOTTOM HOLE: 50' FNL, 207' FEL, SEC. 3

NOTES:

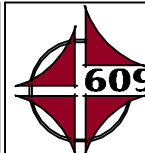
- ▲ INDICATES SECTION CORNER.
- INDICATES CALCULATED CORNER.
- BASIS OF BEARING DERIVED FROM COLORADO COORDINATE SYSTEM OF 1983 NORTH ZONE.
- ALL MEASURED DISTANCES ARE GRID.
- COMBINED SCALE FACTOR: .99972335 CALCULATED FROM THE W. 1/4 CORNER OF SECTION 3, T1N, R68W.
- WELL FOOTAGES ARE MEASURED AT RIGHT ANGLES TO THE SECTION LINES.



WELL PAD - MJOLNIR 13-3HZ PAD

MJOLNIR 3-1HZ, MJOLNIR 3-2HZ, MJOLNIR 3-3HZ,
MJOLNIR 3-4HZ, MJOLNIR 3-5HZ, MJOLNIR 3-6HZ,
MJOLNIR 3-7HZ, MJOLNIR 3-8HZ, MJOLNIR 3-9HZ,
MJOLNIR 3-10HZ & MJOLNIR 3-11HZ
LOCATED IN SECTIONS 3, 10 & 15
T1N, R68W, 6TH P.M. &
WELD COUNTY, COLORADO

**Kerr-McGee Oil &
Gas Onshore L.P.**
1099 18th Street
Denver, Colorado 80202



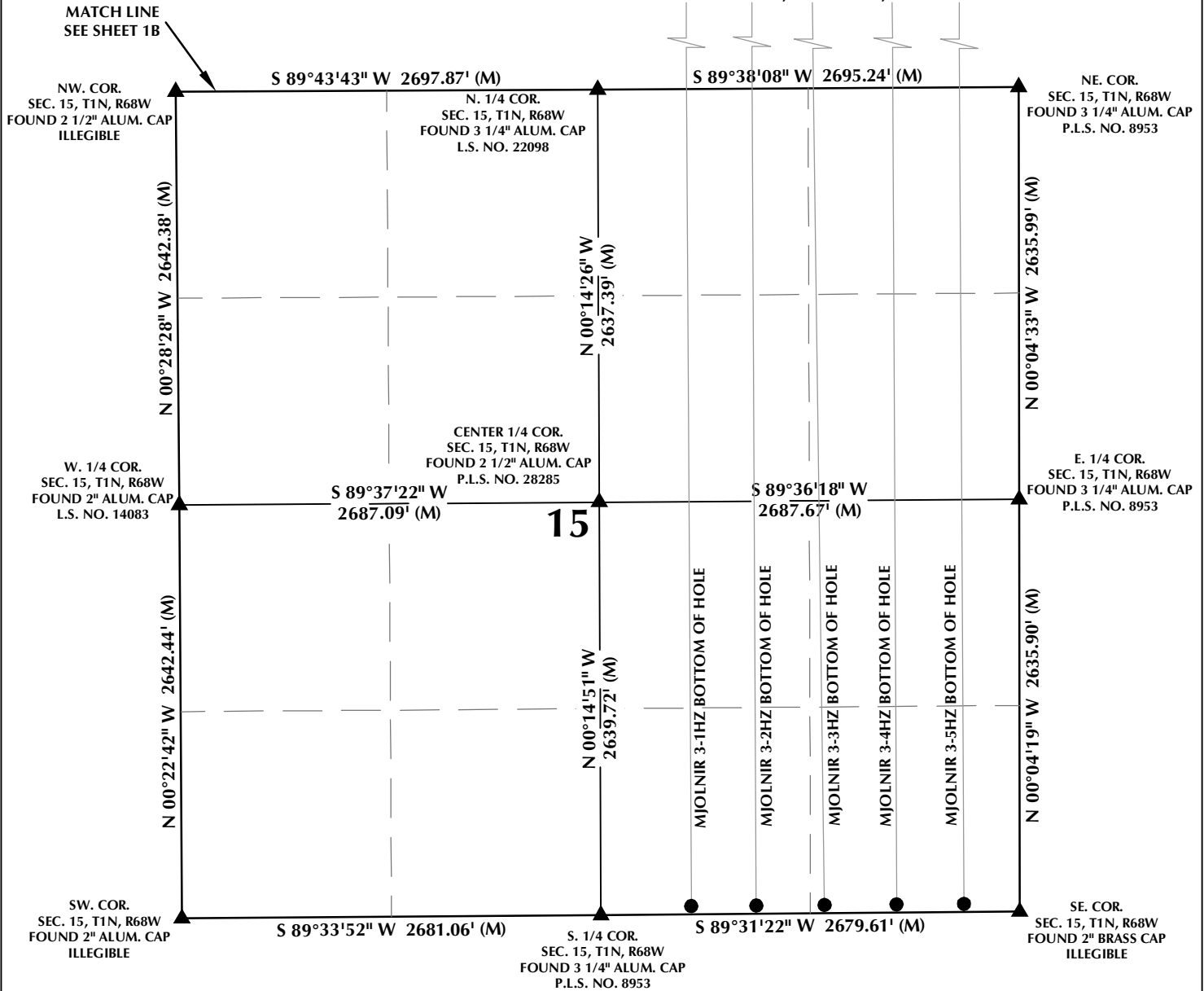
CONSULTING, LLC

SHERIDAN OFFICE
1095 Saberton Avenue
Sheridan, Wyoming 82801
Phone 307-674-0609

LOVELAND OFFICE
6706 North Franklin Avenue
Loveland, Colorado 80538
Phone 970-776-4331

DRAFTED BY:	LMO	CHECKED BY:	RKF	SHEET NO:
DATE DRAFTED:	8/9/18	DATE SURVEYED:	7/30/18	1B
REVISED:		FILE NAME:	14-106	1B OF 1

MULTI-WELL PLAN SECTION 15, T1N, R68W



WELL NOTES:

MJOLNIR 3-1HZ
SURFACE: 552' FSL, 1086' FWL, SEC. 3
BOTTOM HOLE: 50' FSL, 2102' FEL, SEC. 15

MJOLNIR 3-2HZ
SURFACE: 537' FSL, 1086' FWL, SEC. 3
BOTTOM HOLE: 50' FSL, 1686' FEL, SEC. 15

MJOLNIR 3-3HZ
SURFACE: 522' FSL, 1086' FWL, SEC. 3
BOTTOM HOLE: 50' FSL, 1250' FEL, SEC. 15

MJOLNIR 3-4HZ
SURFACE: 507' FSL, 1086' FWL, SEC. 3
BOTTOM HOLE: 51' FSL, 789' FEL, SEC. 15

MJOLNIR 3-5HZ
SURFACE: 492' FSL, 1086' FWL, SEC. 3
BOTTOM HOLE: 51' FSL, 357' FEL, SEC. 15

MJOLNIR 3-6HZ
SURFACE: 477' FSL, 1086' FWL, SEC. 3
BOTTOM HOLE: 50' FNL, 2416' FEL, SEC. 3

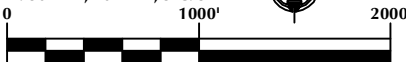
MJOLNIR 3-7HZ
SURFACE: 462' FSL, 1086' FWL, SEC. 3
BOTTOM HOLE: 50' FNL, 1988' FEL, SEC. 3

MJOLNIR 3-8HZ
SURFACE: 447' FSL, 1086' FWL, SEC. 3
BOTTOM HOLE: 50' FNL, 1529' FEL, SEC. 3

MJOLNIR 3-9HZ
SURFACE: 432' FSL, 1086' FWL, SEC. 3
BOTTOM HOLE: 50' FNL, 1109' FEL, SEC. 3

MJOLNIR 3-10HZ
SURFACE: 417' FSL, 1085' FWL, SEC. 3
BOTTOM HOLE: 50' FNL, 663' FEL, SEC. 3

MJOLNIR 3-11HZ
SURFACE: 402' FSL, 1085' FWL, SEC. 3
BOTTOM HOLE: 50' FNL, 207' FEL, SEC. 3



SCALE: 1" = 1000'

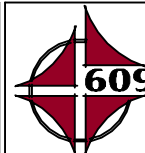
NOTES:

- ▲ INDICATES SECTION CORNER.
- INDICATES CALCULATED CORNER.
- BASIS OF BEARING DERIVED FROM COLORADO COORDINATE SYSTEM OF 1983 NORTH ZONE.
- ALL MEASURED DISTANCES ARE GRID.
- COMBINED SCALE FACTOR: .99972335 CALCULATED FROM THE W. 1/4 CORNER OF SECTION 3, T1N, R68W.
- WELL FOOTAGES ARE MEASURED AT RIGHT ANGLES TO THE SECTION LINES.

WELL PAD - MJOLNIR 13-3HZ PAD

MJOLNIR 3-1HZ, MJOLNIR 3-2HZ, MJOLNIR 3-3HZ,
MJOLNIR 3-4HZ, MJOLNIR 3-5HZ, MJOLNIR 3-6HZ,
MJOLNIR 3-7HZ, MJOLNIR 3-8HZ, MJOLNIR 3-9HZ,
MJOLNIR 3-10HZ & MJOLNIR 3-11HZ
LOCATED IN SECTIONS 3, 10 & 15
T1N, R68W, 6TH P.M. &
WELD COUNTY, COLORADO

**Kerr-McGee Oil &
Gas Onshore L.P.**
1099 18th Street
Denver, Colorado 80202



CONSULTING, LLC

SHERIDAN OFFICE
1095 Saberton Avenue
Sheridan, Wyoming 82801
Phone 307-674-0609

LOVELAND OFFICE
6706 North Franklin Avenue
Loveland, Colorado 80538
Phone 970-776-4331

DRAFTED BY:	LMO	CHECKED BY:	RKF	SHEET NO:
DATE DRAFTED:	8/9/18	DATE SURVEYED:	7/30/18	1C
REVISED:		FILE NAME:	14-106	1C OF 1