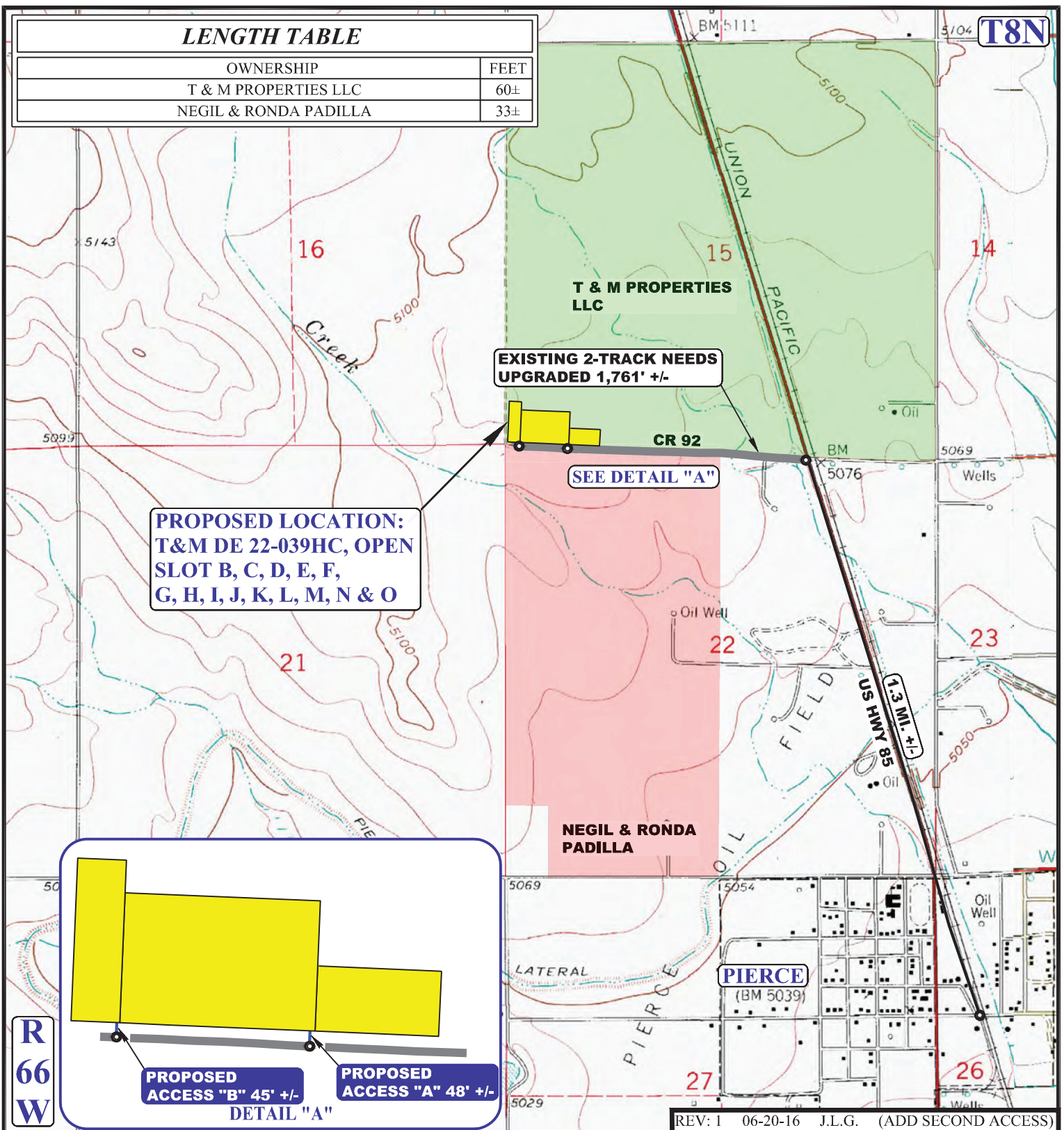


## LENGTH TABLE

OWNERSHIP	FEET
T & M PROPERTIES LLC	60±
NEGIL & RONDA PADILLA	33±



NOTE: PARCEL DATA SHOWN HAS BEEN OBTAINED FROM VARIOUS SOURCES AND SHOULD BE USED FOR MAPPING, GRAPHIC AND PLANNING PURPOSES ONLY. NO WARRANTY IS MADE BY UINTAH ENGINEERING AND LAND SURVEYING (UELS) FOR ACCURACY OF THE PARCEL DATA.

### LEGEND:

- EXISTING ROAD
- PROPOSED ROAD
- PROPOSED ROAD (SERVICING OTHER WELLS)



UELS, LLC  
Corporate Office \* 85 South 200 East  
Vernal, UT 84078 \* (435) 789-1017



### GREAT WESTERN OPERATING COMPANY

T&M DE 22-039HC, OPEN SLOT B, C, D, E, F,  
G, H, I, J, K, L, M, N & O  
SW 1/4 SW 1/4, SECTION 15, T8N, R66W, 6th P.M.  
WELD COUNTY, COLORADO

**SUA Parcel Map: Green**