

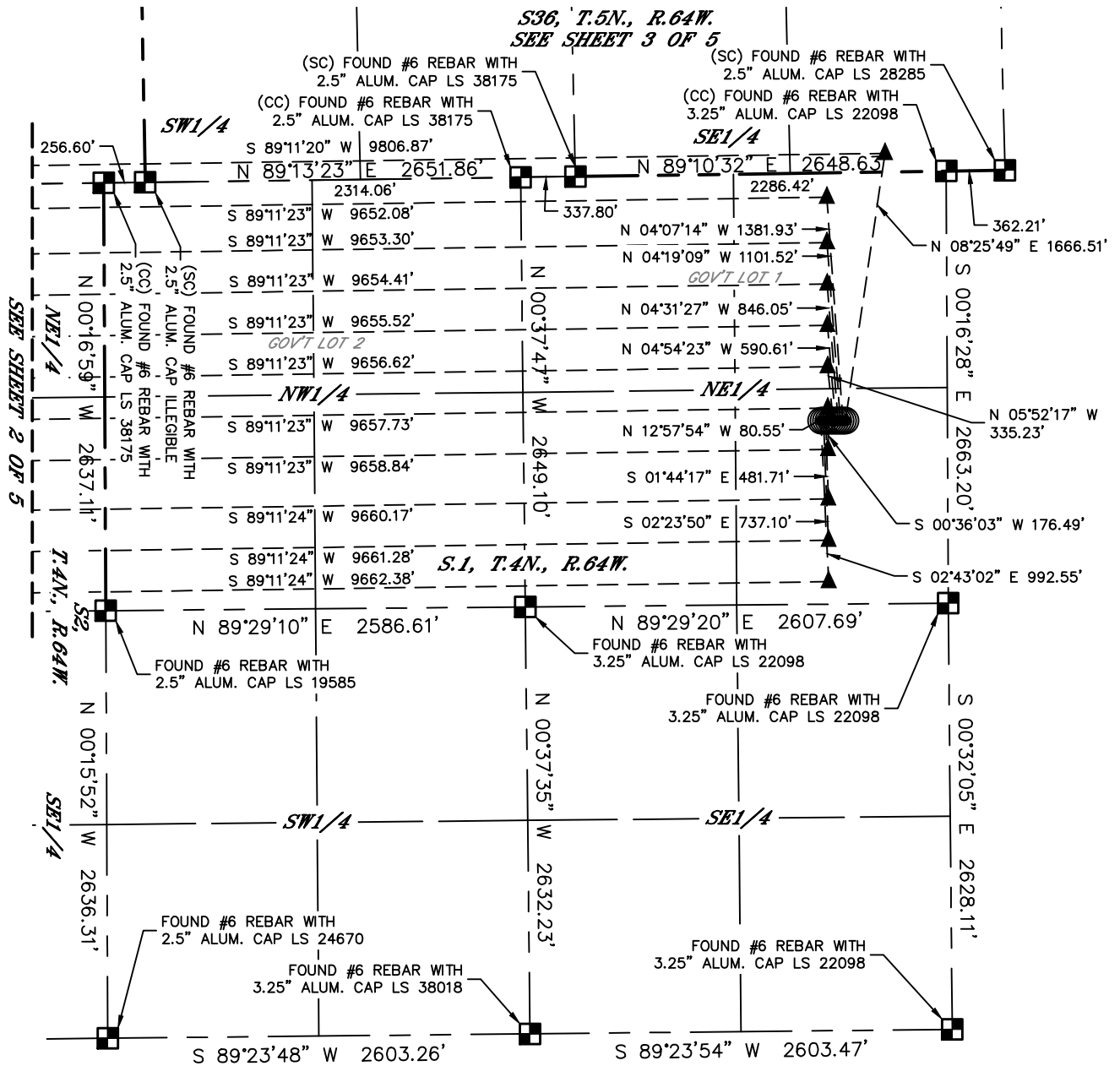


# MULTI-WELL PLAN

## RED CLOUD 4N64W1 1-11 PAD

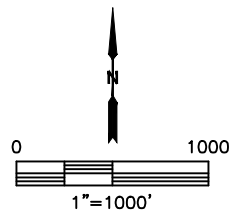
SECTION: 1  
TOWNSHIP: 4N  
RANGE: 64W  
6TH. P.M.  
WELD COUNTY, CO

THIS MAP DOES NOT REPRESENT A BOUNDARY SURVEY



### LEGEND

- = ALIQUOT MONUMENT AS DESCRIBED
- = CALCULATED POSITION
- = SURFACE HOLE LOCATION (SHL)
- ▲ = ENTRY POINT LOCATION (EP)
- <sub>BH</sub> = BOTTOM HOLE LOCATION (BHL)
- ⊙ = EXISTING WELL
- ⊘ = ABANDONED WELL



SEE SHEETS 2 AND 4 FOR BOTTOM HOLE INFORMATION

SHEET 1 OF 5

DATE: 8/17/2018  
PROJECT#: 2017003



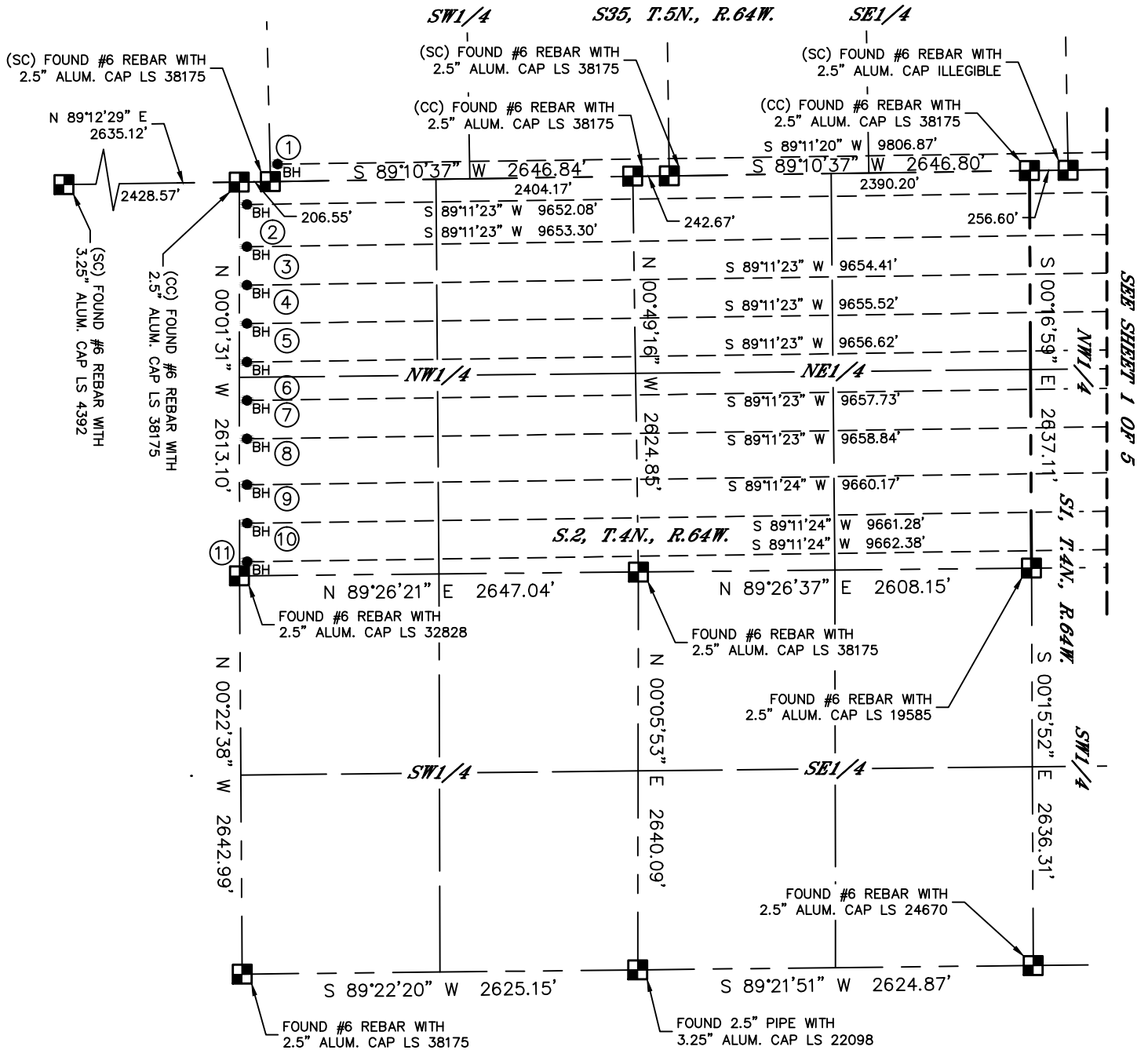
Lat40°, Inc. 6250 W. 10th Street, Unit 2, Greeley, CO 970-515-5294

# MULTI-WELL PLAN

## RED CLOUD 4N64W1 1-11 PAD

SECTION: 1  
TOWNSHIP: 4N  
RANGE: 64W  
6TH. P.M.  
WELD COUNTY, CO

THIS MAP DOES NOT REPRESENT A BOUNDARY SURVEY



#	WELL NAME	BHL FOOTAGE			BHL LAT °	BHL LONG °	BHL S-T-R	
1	RED CLOUD ON	115	FSL	50	FWL	40.34892	-104.52602	35-5-64
2	RED CLOUD 1N	150	FNL	50	FWL	40.34819	-104.52677	2-4-64
3	RED CLOUD 2N	430	FNL	50	FWL	40.34742	-104.52678	2-4-64
4	RED CLOUD 3N	685	FNL	50	FWL	40.34672	-104.52679	2-4-64
5	RED CLOUD 4N	940	FNL	50	FWL	40.34602	-104.52680	2-4-64
6	RED CLOUD 5N	1195	FNL	50	FWL	40.34532	-104.52681	2-4-64
7	RED CLOUD 6N	1450	FNL	50	FWL	40.34462	-104.52682	2-4-64
8	RED CLOUD 7N	1705	FNL	50	FWL	40.34392	-104.52683	2-4-64
9	RED CLOUD 8N	2010	FNL	50	FWL	40.34308	-104.52684	2-4-64
10	RED CLOUD 9N	2265	FNL	50	FWL	40.34238	-104.52685	2-4-64
11	RED CLOUD 10N	2520	FNL	50	FWL	40.34168	-104.52686	2-4-64

**LEGEND**

- = ALIQUOT MONUMENT AS DESCRIBED
- = CALCULATED POSITION
- = SURFACE HOLE LOCATION (SHL)
- ▲ = ENTRY POINT LOCATION (EP)
- <sub>BH</sub> = BOTTOM HOLE LOCATION (BHL)
- ⊙ = EXISTING WELL
- ⊙ = ABANDONED WELL

0 1000  
1"=1000'



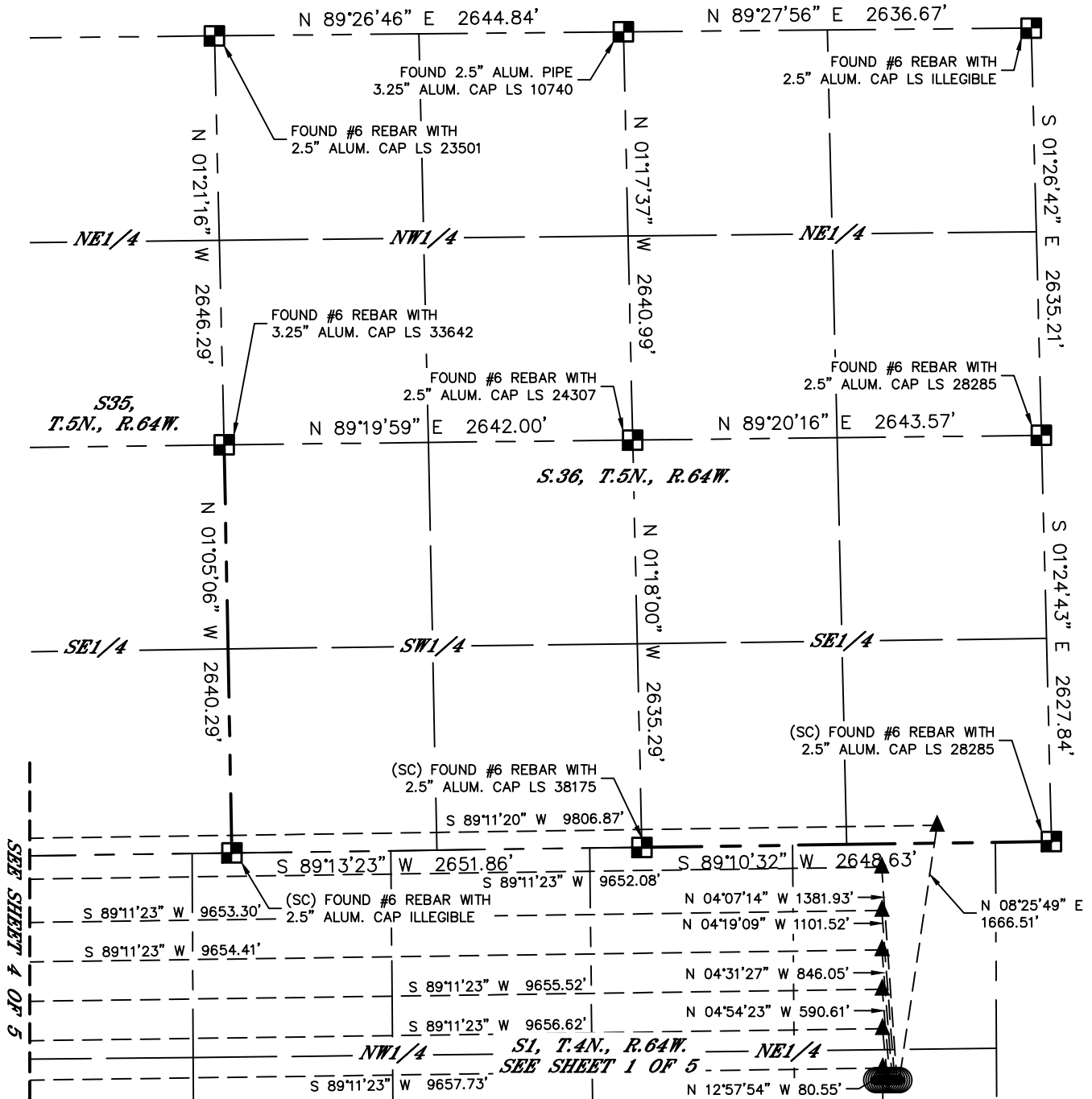
Lat40°, Inc. 6250 W. 10th Street, Unit 2, Greeley, CO 970-515-5294

# MULTI-WELL PLAN

## RED CLOUD 4N64W1 1-11 PAD

SECTION: 1  
TOWNSHIP: 4N  
RANGE: 64W  
6TH. P.M.  
WELD COUNTY, CO

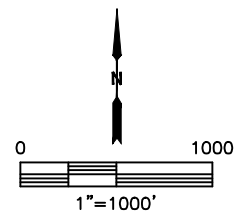
THIS MAP DOES NOT REPRESENT A BOUNDARY SURVEY



SEE SHEET 4 OF 5

### LEGEND

- = ALIQUOT MONUMENT AS DESCRIBED
- = CALCULATED POSITION
- = SURFACE HOLE LOCATION (SHL)
- ▲ = ENTRY POINT LOCATION (EP)
- <sub>BH</sub> = BOTTOM HOLE LOCATION (BHL)
- ⊕ = EXISTING WELL
- ⊖ = ABANDONED WELL



SEE SHEETS 2 AND 4 FOR BOTTOM HOLE INFORMATION

SHEET 3 OF 5

DATE: 8/17/2018  
PROJECT#: 2017003



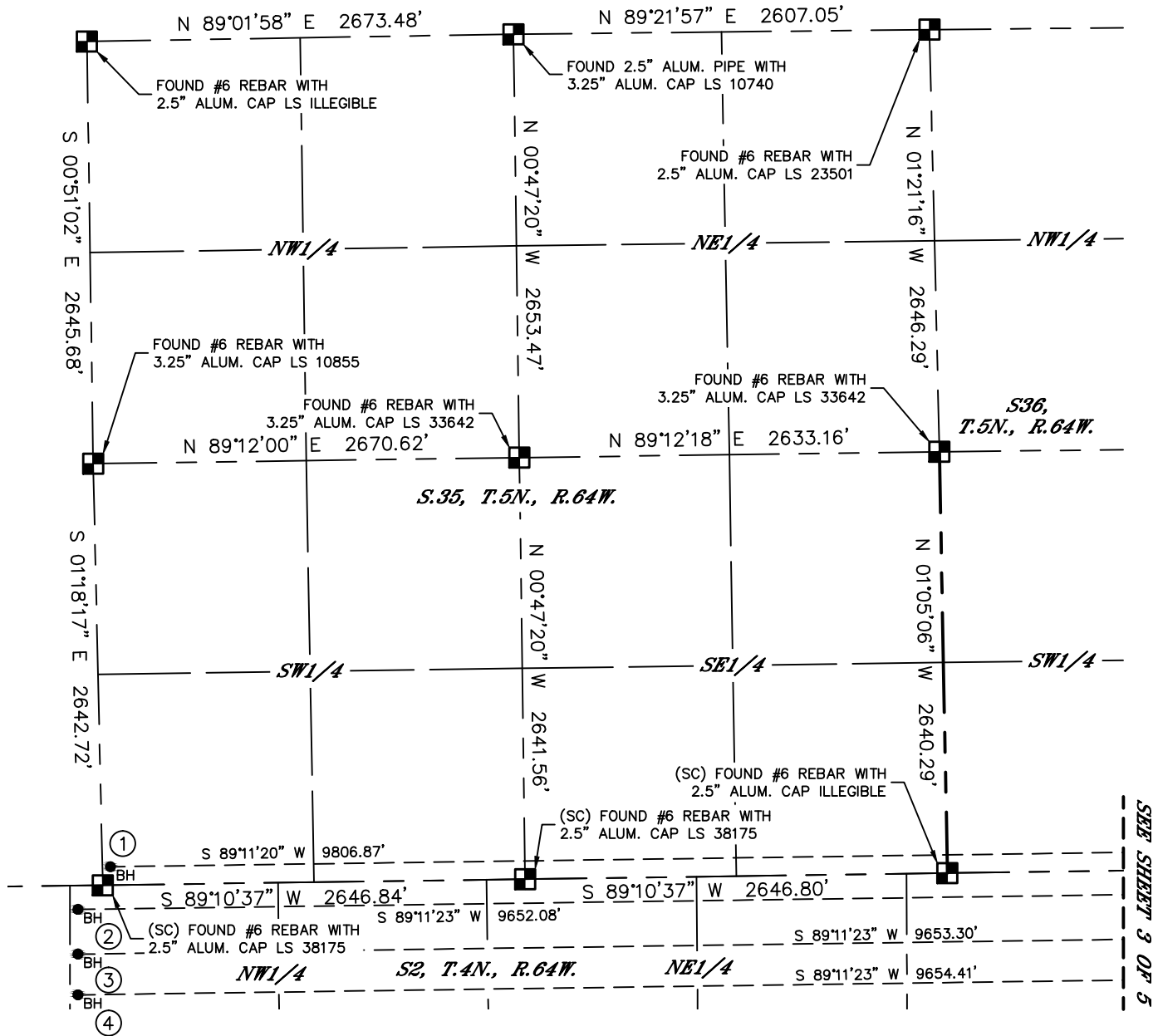
Lat40°, Inc. 6250 W. 10th Street, Unit 2, Greeley, CO 970-515-5294

# MULTI-WELL PLAN

## RED CLOUD 4N64W1 1-11 PAD

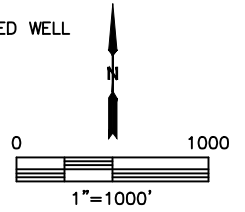
SECTION: 1  
TOWNSHIP: 4N  
RANGE: 64W  
6TH. P.M.  
WELD COUNTY, CO

THIS MAP DOES NOT REPRESENT A BOUNDARY SURVEY



#	WELL NAME	BHL FOOTAGE				BHL LAT °	BHL LONG °	BHL S-T-R
1	RED CLOUD 0N	115	FSL	50	FWL	40.34892	-104.52602	35-5-64
2	RED CLOUD 1N	150	FNL	50	FWL	40.34819	-104.52677	2-4-64
3	RED CLOUD 2N	430	FNL	50	FWL	40.34742	-104.52678	2-4-64
4	RED CLOUD 3N	685	FNL	50	FWL	40.34672	-104.52679	2-4-64
5	RED CLOUD 4N	940	FNL	50	FWL	40.34602	-104.52680	2-4-64
6	RED CLOUD 5N	1195	FNL	50	FWL	40.34532	-104.52681	2-4-64
7	RED CLOUD 6N	1450	FNL	50	FWL	40.34462	-104.52682	2-4-64
8	RED CLOUD 7N	1705	FNL	50	FWL	40.34392	-104.52683	2-4-64
9	RED CLOUD 8N	2010	FNL	50	FWL	40.34308	-104.52684	2-4-64
10	RED CLOUD 9N	2265	FNL	50	FWL	40.34238	-104.52685	2-4-64
11	RED CLOUD 10N	2520	FNL	50	FWL	40.34168	-104.52686	2-4-64

- LEGEND
- = ALIQUOT MONUMENT AS DESCRIBED
  - = CALCULATED POSITION
  - = SURFACE HOLE LOCATION (SHL)
  - ▲ = ENTRY POINT LOCATION (EP)
  - <sub>BH</sub> = BOTTOM HOLE LOCATION (BHL)
  - ⊙ = EXISTING WELL
  - ⊙ = ABANDONED WELL



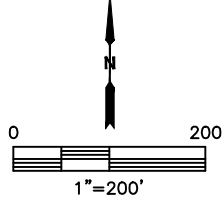
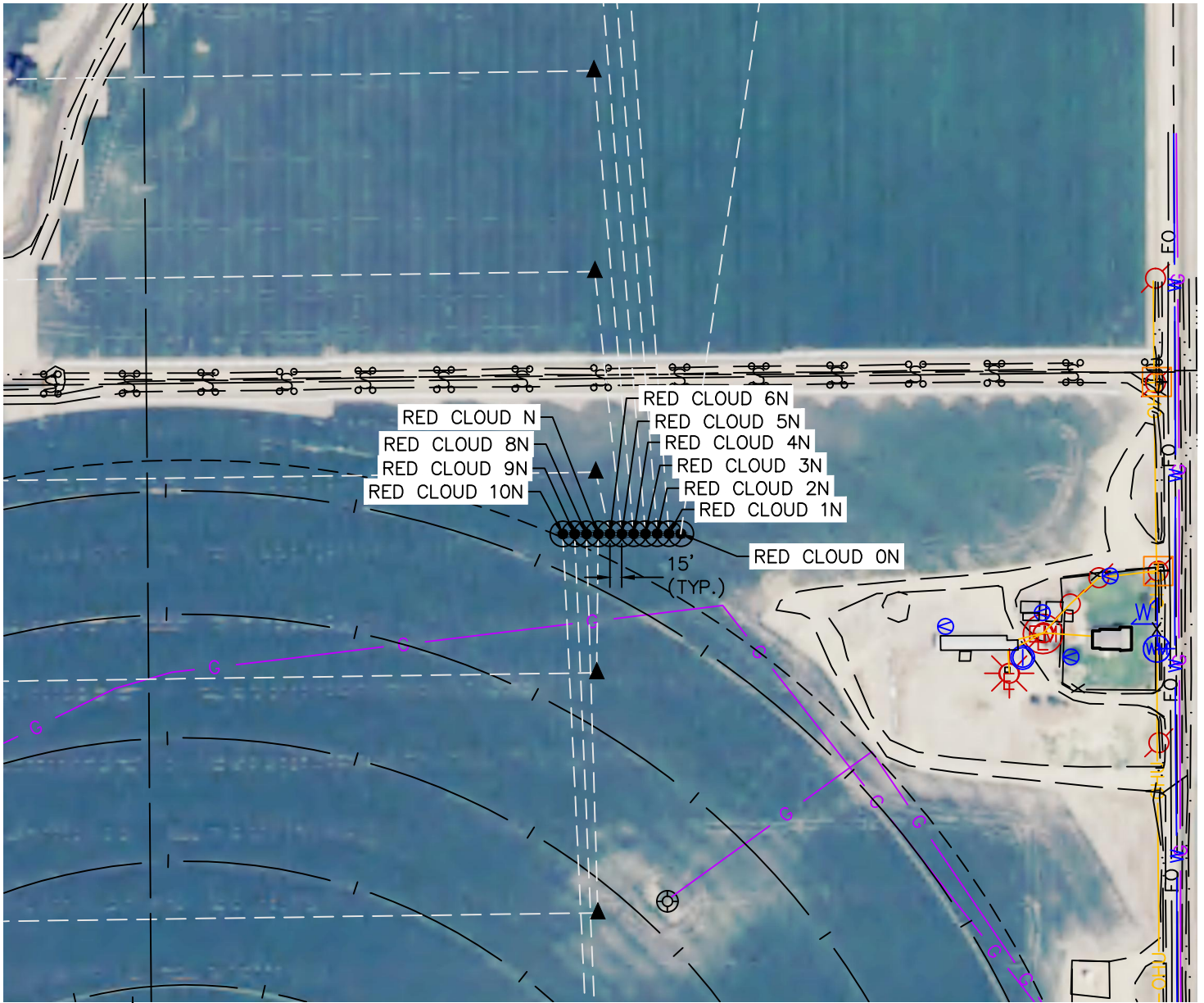


Lat40°, Inc. 6250 W. 10th Street, Unit 2, Greeley, CO 970-515-5294

# MULTI-WELL PLAN

## RED CLOUD 4N64W1 1-11 PAD

SECTION: 1  
TOWNSHIP: 4N  
RANGE: 64W  
6TH. P.M.  
WELD COUNTY, CO



#	WELL NAME	SHL FOOTAGE			SHL LAT °	SHL LONG °	SHL PDOP	SHL ELEV (FT.)	SHL 1/4/1/4	SHL S-T-R	
1	RED CLOUD 0N	1530	FNL	629	FEL	40.34448	-104.49179	3.2	4602	SENE	1-4-64
2	RED CLOUD 1N	1530	FNL	644	FEL	40.34448	-104.49185	2.2	4602	SENE	1-4-64
3	RED CLOUD 2N	1529	FNL	659	FEL	40.34448	-104.49190	2.2	4602	SENE	1-4-64
4	RED CLOUD 3N	1529	FNL	674	FEL	40.34448	-104.49195	2.2	4602	SENE	1-4-64
5	RED CLOUD 4N	1529	FNL	689	FEL	40.34448	-104.49201	2.2	4602	SENE	1-4-64
6	RED CLOUD 5N	1529	FNL	704	FEL	40.34448	-104.49206	2.2	4602	SENE	1-4-64
7	RED CLOUD 6N	1529	FNL	719	FEL	40.34448	-104.49212	2.2	4602	SENE	1-4-64
8	RED CLOUD 7N	1529	FNL	734	FEL	40.34448	-104.49217	2.2	4602	SENE	1-4-64
9	RED CLOUD 8N	1528	FNL	749	FEL	40.34448	-104.49222	2.1	4602	SENE	1-4-64
10	RED CLOUD 9N	1528	FNL	764	FEL	40.34448	-104.49228	2.1	4603	SENE	1-4-64
11	RED CLOUD 10N	1528	FNL	779	FEL	40.34448	-104.49233	2.1	4603	SENE	1-4-64