

PDC Energy Inc. DJ Basin

Well Name: **J Clark 7N (Nio C)**

Surface Location: Clark 5N65W14 1-21 Pad Sec.14-T5N-R65W
 North American Datum 1983 , US State Plane 1983, Colorado Northern Zone

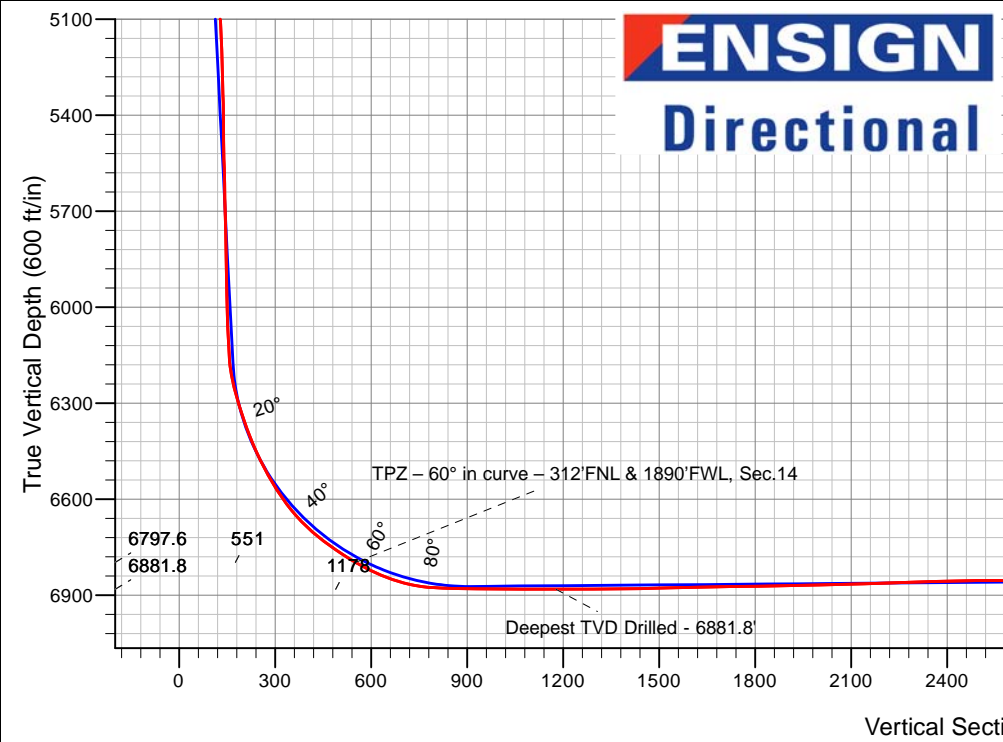
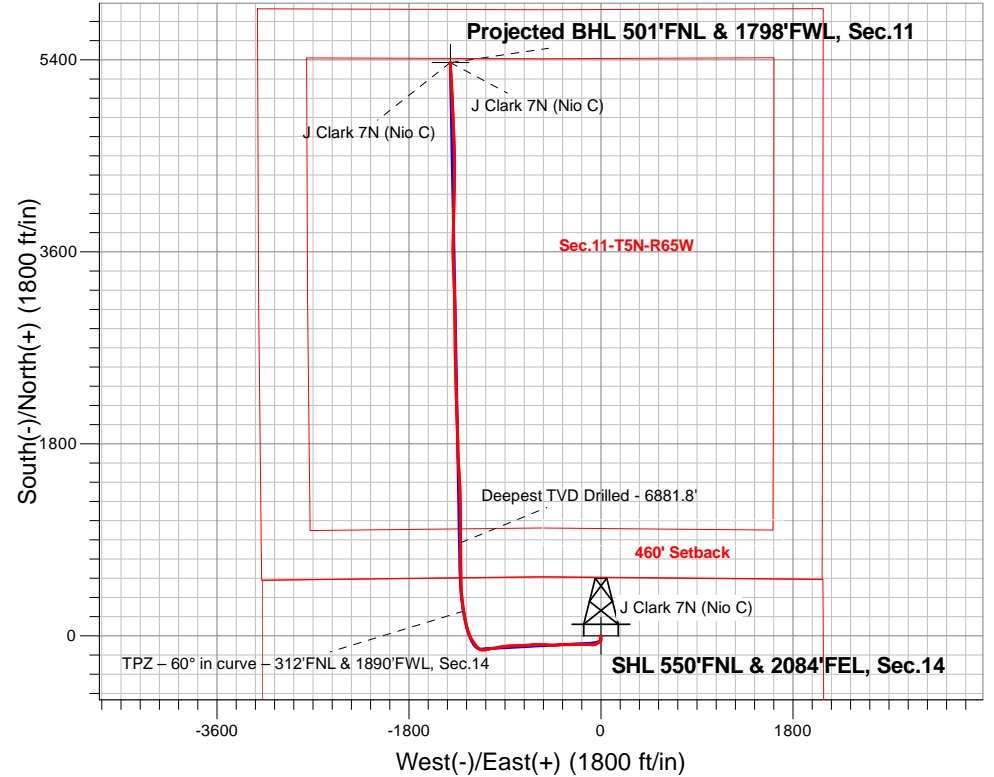
Ground Elevation: 4615.0

+N/-S	+E/-W	Northing	Easting	Latitude	Longitude	Slot
0.0	0.0	1391636.24	3242680.95	40.405170	-104.628566	

Original Well Elev WELL @ 4638.0ft (Original Well Elev)

FINAL SURVEY

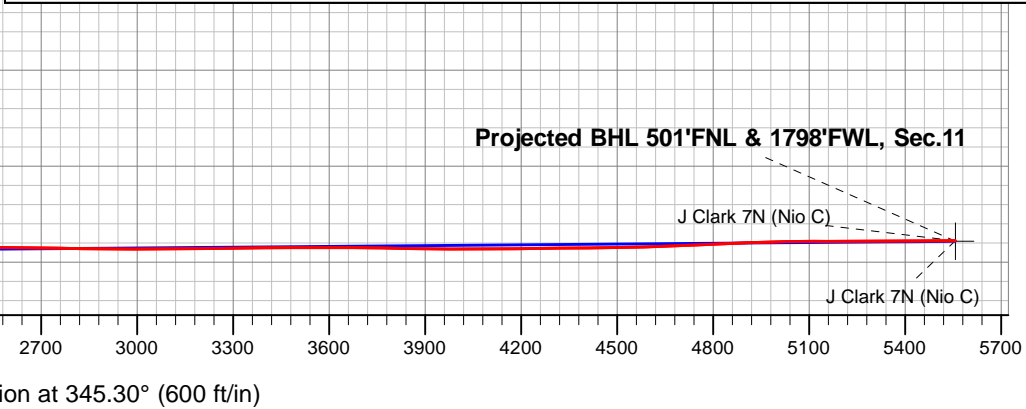
Projected Bottom Hole Location
12,245'MD 6833'TVD 5374'N & 1412'W of SHL
90.3 degree Incl @ 356.5 degree AZM



Clark 5N65W14 1-21 Pad Sec.14-T5N-R65W
 J Clark 7N (Nio C)
 J Clark 7N (Nio C) Wellbore #1
 12:08, July 31 2018

ANNOTATIONS		
TVD	MD	Annotation
6797.6	7083.6	TPZ - 60° in curve - 312'FNL & 1890'FWL, Sec.14
6881.8	7740.0	Deepest TVD Drilled - 6881.8'

LEGEND	
	J Clark 7N (Nio C), J Clark 7N (Nio C) Wellbore #1, Plan #3 (7-27-18) V0
	J Clark 7N (Nio C) Wellbore #1
	Survey #1





PDC Energy Inc. DJ Basin

SEC.14-T5N-R65W

Clark 5N65W14 1-21 Pad Sec.14-T5N-R65W

J Clark 7N (Nio C)

J Clark 7N (Nio C) Wellbore #1

Survey: Survey #1

Standard Survey Report

31 July, 2018



Company:	PDC Energy Inc. DJ Basin	Local Co-ordinate Reference:	Well J Clark 7N (Nio C)
Project:	SEC.14-T5N-R65W	TVD Reference:	WELL @ 4638.0ft (Original Well Elev)
Site:	Clark 5N65W14 1-21 Pad Sec.14-T5N-R65W	MD Reference:	WELL @ 4638.0ft (Original Well Elev)
Well:	J Clark 7N (Nio C)	North Reference:	True
Wellbore:	J Clark 7N (Nio C) Wellbore #1	Survey Calculation Method:	Minimum Curvature
Design:	J Clark 7N (Nio C) Wellbore #1	Database:	US_EDM

Project	SEC.14-T5N-R65W, Weld County, Colorado		
Map System:	US State Plane 1983	System Datum:	Mean Sea Level
Geo Datum:	North American Datum 1983		Using Well Reference Point
Map Zone:	Colorado Northern Zone		Using geodetic scale factor

Site	Clark 5N65W14 1-21 Pad Sec.14-T5N-R65W				
Site Position:		Northing:	1,391,636.42 usft	Latitude:	40.405168
From:	Lat/Long	Easting:	3,242,770.94 usft	Longitude:	-104.628243
Position Uncertainty:	0.0 ft	Slot Radius:	13-3/16 "	Grid Convergence:	0.56 °

Well	J Clark 7N (Nio C)					
Well Position	+N/-S	0.0 ft	Northing:	1,391,636.24 usft	Latitude:	40.405170
	+E/-W	0.0 ft	Easting:	3,242,680.95 usft	Longitude:	-104.628566
Position Uncertainty		0.0 ft	Wellhead Elevation:	0.0 ft	Ground Level:	4,615.0 ft

Wellbore	J Clark 7N (Nio C) Wellbore #1				
Magnetics	Model Name	Sample Date	Declination (°)	Dip Angle (°)	Field Strength (nT)
	HDGM	6/13/2018	8.12	66.88	52,240

Design	J Clark 7N (Nio C) Wellbore #1				
Audit Notes:					
Version:	1.0	Phase:	ACTUAL	Tie On Depth:	0.0
Vertical Section:	Depth From (TVD) (ft)	+N/-S (ft)	+E/-W (ft)	Direction (°)	
	0.0	0.0	0.0	345.30	

Survey Program	Date	7/31/2018			
From (ft)	To (ft)	Survey (Wellbore)	Tool Name	Description	
152.0	12,245.0	Survey #1 (J Clark 7N (Nio C) Wellbore #1	MWD	MWD - Standard	

Measured Depth (ft)	Inclination (°)	Azimuth (°)	Vertical Depth (ft)	+N/-S (ft)	+E/-W (ft)	Vertical Section (ft)	Dogleg Rate (°/100usft)	Build Rate (°/100usft)	Turn Rate (°/100usft)
0.0	0.00	0.00	0.0	0.0	0.0	0.0	0.00	0.00	0.00
152.0	0.90	263.40	152.0	-0.1	-1.2	0.2	0.59	0.59	0.00
247.0	0.90	268.30	247.0	-0.2	-2.7	0.4	0.08	0.00	5.16
343.0	0.90	261.20	343.0	-0.4	-4.2	0.7	0.12	0.00	-7.40
438.0	1.30	197.80	438.0	-1.5	-5.2	-0.1	1.27	0.42	-66.74
534.0	2.90	171.10	533.9	-5.0	-5.2	-3.5	1.91	1.67	-27.81
628.0	3.60	174.40	627.7	-10.2	-4.5	-8.8	0.77	0.74	3.51
724.0	3.80	173.90	723.5	-16.4	-3.9	-14.9	0.21	0.21	-0.52
819.0	3.70	175.60	818.3	-22.6	-3.3	-21.0	0.16	-0.11	1.79
915.0	3.60	169.00	914.1	-28.6	-2.5	-27.1	0.45	-0.10	-6.88

Company:	PDC Energy Inc. DJ Basin	Local Co-ordinate Reference:	Well J Clark 7N (Nio C)
Project:	SEC.14-T5N-R65W	TVD Reference:	WELL @ 4638.0ft (Original Well Elev)
Site:	Clark 5N65W14 1-21 Pad Sec.14-T5N-R65W	MD Reference:	WELL @ 4638.0ft (Original Well Elev)
Well:	J Clark 7N (Nio C)	North Reference:	True
Wellbore:	J Clark 7N (Nio C) Wellbore #1	Survey Calculation Method:	Minimum Curvature
Design:	J Clark 7N (Nio C) Wellbore #1	Database:	US_EDM

Survey										
Measured Depth (ft)	Inclination (°)	Azimuth (°)	Vertical Depth (ft)	+N/-S (ft)	+E/-W (ft)	Vertical Section (ft)	Dogleg Rate (°/100usft)	Build Rate (°/100usft)	Turn Rate (°/100usft)	
1,010.0	2.00	164.20	1,009.0	-33.2	-1.5	-31.7	1.70	-1.68	-5.05	
1,106.0	3.50	170.90	1,104.9	-37.7	-0.6	-36.3	1.60	1.56	6.98	
1,200.0	3.70	190.20	1,198.7	-43.5	-0.7	-41.9	1.30	0.21	20.53	
1,296.0	3.90	227.90	1,294.5	-48.7	-3.6	-46.2	2.56	0.21	39.27	
1,391.0	4.50	232.20	1,389.3	-53.2	-9.0	-49.2	0.71	0.63	4.53	
1,486.0	5.10	231.70	1,483.9	-58.1	-15.2	-52.3	0.63	0.63	-0.53	
1,627.0	6.20	241.00	1,624.3	-65.7	-26.8	-56.7	1.01	0.78	6.60	
1,773.0	5.50	236.30	1,769.5	-73.4	-39.5	-60.9	0.58	-0.48	-3.22	
1,869.0	6.90	247.90	1,864.9	-78.1	-48.7	-63.2	1.95	1.46	12.08	
1,965.0	8.10	253.90	1,960.1	-82.1	-60.5	-64.1	1.49	1.25	6.25	
2,059.0	11.20	270.40	2,052.8	-83.9	-76.0	-61.9	4.39	3.30	17.55	
2,154.0	13.00	274.30	2,145.7	-83.0	-95.9	-56.0	2.08	1.89	4.11	
2,250.0	14.90	273.00	2,238.8	-81.6	-119.0	-48.7	2.01	1.98	-1.35	
2,345.0	15.70	272.70	2,330.5	-80.3	-144.1	-41.1	0.85	0.84	-0.32	
2,441.0	15.10	271.30	2,423.0	-79.4	-169.5	-33.8	0.74	-0.63	-1.46	
2,537.0	14.70	270.20	2,515.8	-79.1	-194.2	-27.2	0.51	-0.42	-1.15	
2,632.0	14.60	269.30	2,607.7	-79.2	-218.2	-21.2	0.26	-0.11	-0.95	
2,728.0	14.40	268.50	2,700.7	-79.7	-242.3	-15.6	0.29	-0.21	-0.83	
2,823.0	13.80	266.70	2,792.8	-80.6	-265.4	-10.6	0.78	-0.63	-1.89	
2,919.0	15.10	268.30	2,885.8	-81.7	-289.3	-5.6	1.42	1.35	1.67	
3,015.0	16.80	270.20	2,978.1	-82.0	-315.7	0.8	1.85	1.77	1.98	
3,110.0	15.80	269.70	3,069.2	-82.0	-342.4	7.6	1.06	-1.05	-0.53	
3,206.0	14.80	267.70	3,161.8	-82.6	-367.7	13.5	1.18	-1.04	-2.08	
3,302.0	13.70	265.30	3,254.9	-84.0	-391.3	18.1	1.30	-1.15	-2.50	
3,397.0	13.50	263.20	3,347.2	-86.2	-413.5	21.5	0.56	-0.21	-2.21	
3,492.0	13.70	268.50	3,439.6	-87.8	-435.7	25.6	1.33	0.21	5.58	
3,588.0	14.00	270.60	3,532.8	-88.0	-458.7	31.3	0.61	0.31	2.19	
3,684.0	15.70	274.60	3,625.6	-86.9	-483.3	38.7	2.07	1.77	4.17	
3,779.0	15.60	273.90	3,717.0	-85.0	-508.8	47.0	0.22	-0.11	-0.74	
3,875.0	15.30	273.50	3,809.6	-83.3	-534.4	55.1	0.33	-0.31	-0.42	
3,970.0	14.80	272.70	3,901.3	-82.0	-559.0	62.6	0.57	-0.53	-0.84	
4,065.0	13.70	270.90	3,993.4	-81.2	-582.4	69.3	1.25	-1.16	-1.89	
4,161.0	12.80	269.30	4,086.8	-81.2	-604.4	74.9	1.01	-0.94	-1.67	
4,256.0	15.30	265.60	4,179.0	-82.3	-627.4	79.7	2.79	2.63	-3.89	
4,352.0	14.40	264.40	4,271.8	-84.4	-651.9	83.8	0.99	-0.94	-1.25	
4,447.0	13.30	263.40	4,364.0	-86.8	-674.5	87.2	1.18	-1.16	-1.05	
4,543.0	15.90	268.30	4,456.9	-88.5	-698.6	91.8	3.00	2.71	5.10	
4,639.0	15.90	267.90	4,549.2	-89.3	-724.9	97.6	0.11	0.00	-0.42	
4,734.0	13.10	266.70	4,641.2	-90.4	-748.7	102.6	2.96	-2.95	-1.26	
4,830.0	12.80	266.30	4,734.8	-91.7	-770.1	106.7	0.33	-0.31	-0.42	
4,926.0	13.80	267.70	4,828.2	-92.9	-792.2	111.2	1.09	1.04	1.46	
5,022.0	16.40	269.90	4,920.9	-93.4	-817.2	117.1	2.77	2.71	2.29	
5,117.0	16.40	268.50	5,012.0	-93.7	-844.0	123.5	0.42	0.00	-1.47	
5,213.0	14.50	266.70	5,104.5	-94.8	-869.6	129.0	2.04	-1.98	-1.88	

Company:	PDC Energy Inc. DJ Basin	Local Co-ordinate Reference:	Well J Clark 7N (Nio C)
Project:	SEC.14-T5N-R65W	TVD Reference:	WELL @ 4638.0ft (Original Well Elev)
Site:	Clark 5N65W14 1-21 Pad Sec.14-T5N-R65W	MD Reference:	WELL @ 4638.0ft (Original Well Elev)
Well:	J Clark 7N (Nio C)	North Reference:	True
Wellbore:	J Clark 7N (Nio C) Wellbore #1	Survey Calculation Method:	Minimum Curvature
Design:	J Clark 7N (Nio C) Wellbore #1	Database:	US_EDM

Survey										
Measured Depth (ft)	Inclination (°)	Azimuth (°)	Vertical Depth (ft)	+N/-S (ft)	+E/-W (ft)	Vertical Section (ft)	Dogleg Rate (°/100usft)	Build Rate (°/100usft)	Turn Rate (°/100usft)	
5,308.0	15.90	262.80	5,196.2	-97.1	-894.3	133.1	1.82	1.47	-4.11	
5,403.0	15.60	260.00	5,287.6	-101.0	-919.8	135.8	0.86	-0.32	-2.95	
5,499.0	13.80	260.00	5,380.5	-105.2	-943.8	137.8	1.88	-1.88	0.00	
5,595.0	12.10	257.70	5,474.0	-109.3	-964.9	139.2	1.85	-1.77	-2.40	
5,690.0	13.90	262.10	5,566.6	-113.0	-986.0	140.9	2.16	1.89	4.63	
5,786.0	12.70	259.70	5,660.0	-116.5	-1,007.8	143.1	1.38	-1.25	-2.50	
5,882.0	14.20	260.50	5,753.4	-120.3	-1,029.8	145.0	1.57	1.56	0.83	
5,977.0	13.30	260.90	5,845.7	-124.0	-1,052.1	147.1	0.95	-0.95	0.42	
6,101.0	11.30	258.30	5,966.8	-128.7	-1,078.0	149.1	1.67	-1.61	-2.10	
6,197.0	12.30	266.50	6,060.8	-131.2	-1,097.5	151.6	2.03	1.04	8.54	
6,292.0	12.90	271.80	6,153.5	-131.5	-1,118.2	156.6	1.37	0.63	5.58	
6,387.0	18.00	303.40	6,245.2	-123.1	-1,141.1	170.6	10.17	5.37	33.26	
6,483.0	20.20	320.80	6,336.0	-102.0	-1,163.9	196.7	6.33	2.29	18.13	
6,579.0	23.80	324.20	6,425.0	-73.5	-1,185.8	229.9	3.98	3.75	3.54	
6,674.0	29.10	328.60	6,510.0	-38.2	-1,209.0	269.9	5.94	5.58	4.63	
6,769.0	34.40	336.80	6,590.8	6.3	-1,231.7	318.7	7.18	5.58	8.63	
6,865.0	43.20	343.50	6,665.6	62.8	-1,251.7	378.5	10.15	9.17	6.98	
6,961.0	53.10	350.00	6,729.6	132.3	-1,267.8	449.8	11.47	10.31	6.77	
7,056.0	57.90	350.50	6,783.4	209.5	-1,281.0	527.8	5.07	5.05	0.53	
7,083.6	60.00	350.62	6,797.6	232.8	-1,284.9	551.3	7.61	7.60	0.44	
TPZ - 60° in curve - 312'FNL & 1890'FWL, Sec.14										
7,152.0	65.20	350.90	6,829.1	292.7	-1,294.6	611.7	7.61	7.60	0.41	
7,248.0	75.10	354.20	6,861.7	382.1	-1,306.2	701.2	10.81	10.31	3.44	
7,343.0	86.80	359.30	6,876.6	475.6	-1,311.5	792.9	13.40	12.32	5.37	
7,439.0	89.40	359.30	6,879.8	571.6	-1,312.7	886.0	2.71	2.71	0.00	
7,535.0	89.60	359.50	6,880.6	667.5	-1,313.7	979.1	0.29	0.21	0.21	
7,630.0	89.30	359.90	6,881.5	762.5	-1,314.2	1,071.1	0.53	-0.32	0.42	
7,725.0	90.30	359.70	6,881.8	857.5	-1,314.5	1,163.1	1.07	1.05	-0.21	
7,740.0	90.36	359.73	6,881.8	872.5	-1,314.6	1,177.6	0.47	0.42	0.21	
Deepest TVD Drilled - 6881.8'										
7,821.0	90.70	359.90	6,881.0	953.5	-1,314.8	1,256.0	0.47	0.42	0.21	
7,917.0	89.70	359.50	6,880.7	1,049.5	-1,315.3	1,349.0	1.12	-1.04	-0.42	
8,012.0	91.20	359.20	6,879.9	1,144.5	-1,316.4	1,441.2	1.61	1.58	-0.32	
8,108.0	91.50	358.60	6,877.7	1,240.5	-1,318.2	1,534.4	0.70	0.31	-0.63	
8,203.0	91.50	358.10	6,875.2	1,335.4	-1,321.0	1,626.9	0.53	0.00	-0.53	
8,299.0	90.70	357.60	6,873.3	1,431.3	-1,324.6	1,720.6	0.98	-0.83	-0.52	
8,394.0	90.80	356.90	6,872.1	1,526.2	-1,329.1	1,813.6	0.74	0.11	-0.74	
8,490.0	91.00	356.30	6,870.6	1,622.0	-1,334.8	1,907.7	0.66	0.21	-0.63	
8,586.0	91.80	357.40	6,868.2	1,717.8	-1,340.1	2,001.7	1.42	0.83	1.15	
8,681.0	91.40	359.20	6,865.6	1,812.8	-1,342.9	2,094.2	1.94	-0.42	1.89	
8,777.0	91.60	358.60	6,863.1	1,908.7	-1,344.8	2,187.5	0.66	0.21	-0.63	
8,873.0	91.70	358.30	6,860.3	2,004.6	-1,347.4	2,281.0	0.33	0.10	-0.31	
8,969.0	92.20	357.70	6,857.0	2,100.5	-1,350.7	2,374.6	0.81	0.52	-0.63	

Company:	PDC Energy Inc. DJ Basin	Local Co-ordinate Reference:	Well J Clark 7N (Nio C)
Project:	SEC.14-T5N-R65W	TVD Reference:	WELL @ 4638.0ft (Original Well Elev)
Site:	Clark 5N65W14 1-21 Pad Sec.14-T5N-R65W	MD Reference:	WELL @ 4638.0ft (Original Well Elev)
Well:	J Clark 7N (Nio C)	North Reference:	True
Wellbore:	J Clark 7N (Nio C) Wellbore #1	Survey Calculation Method:	Minimum Curvature
Design:	J Clark 7N (Nio C) Wellbore #1	Database:	US_EDM

Survey										
Measured Depth (ft)	Inclination (°)	Azimuth (°)	Vertical Depth (ft)	+N/-S (ft)	+E/-W (ft)	Vertical Section (ft)	Dogleg Rate (°/100usft)	Build Rate (°/100usft)	Turn Rate (°/100usft)	
9,064.0	91.00	358.10	6,854.4	2,195.4	-1,354.2	2,467.2	1.33	-1.26	0.42	
9,160.0	89.30	359.00	6,854.1	2,291.4	-1,356.6	2,560.7	2.00	-1.77	0.94	
9,256.0	89.20	358.80	6,855.4	2,387.3	-1,358.5	2,654.0	0.23	-0.10	-0.21	
9,351.0	89.30	358.10	6,856.6	2,482.3	-1,361.0	2,746.5	0.74	0.11	-0.74	
9,447.0	89.00	357.70	6,858.1	2,578.2	-1,364.5	2,840.1	0.52	-0.31	-0.42	
9,543.0	89.80	359.90	6,859.1	2,674.2	-1,366.6	2,933.5	2.44	0.83	2.29	
9,638.0	90.00	359.90	6,859.2	2,769.2	-1,366.7	3,025.4	0.21	0.21	0.00	
9,733.0	90.50	359.50	6,858.8	2,864.2	-1,367.2	3,117.4	0.67	0.53	-0.42	
9,829.0	90.70	359.30	6,857.8	2,960.2	-1,368.2	3,210.5	0.29	0.21	-0.21	
9,925.0	90.70	359.00	6,856.6	3,056.2	-1,369.7	3,303.7	0.31	0.00	-0.31	
10,020.0	90.70	358.60	6,855.5	3,151.1	-1,371.6	3,396.1	0.42	0.00	-0.42	
10,115.0	90.20	358.50	6,854.7	3,246.1	-1,374.0	3,488.6	0.54	-0.53	-0.11	
10,211.0	90.10	357.70	6,854.5	3,342.0	-1,377.2	3,582.2	0.84	-0.10	-0.83	
10,306.0	89.40	357.60	6,854.9	3,437.0	-1,381.1	3,675.0	0.74	-0.74	-0.11	
10,402.0	89.10	357.60	6,856.2	3,532.9	-1,385.1	3,768.8	0.31	-0.31	0.00	
10,497.0	89.40	0.40	6,857.4	3,627.8	-1,386.8	3,861.0	2.96	0.32	2.95	
10,592.0	89.00	0.90	6,858.7	3,722.8	-1,385.7	3,952.6	0.67	-0.42	0.53	
10,688.0	90.10	1.60	6,859.5	3,818.8	-1,383.6	4,044.9	1.36	1.15	0.73	
10,783.0	90.80	2.00	6,858.7	3,913.7	-1,380.6	4,136.0	0.85	0.74	0.42	
10,879.0	90.80	1.30	6,857.4	4,009.7	-1,377.9	4,228.1	0.73	0.00	-0.73	
10,975.0	90.40	1.30	6,856.4	4,105.7	-1,375.7	4,320.4	0.42	-0.42	0.00	
11,070.0	90.40	1.10	6,855.7	4,200.6	-1,373.7	4,411.8	0.21	0.00	-0.21	
11,165.0	91.30	0.70	6,854.3	4,295.6	-1,372.2	4,503.2	1.04	0.95	-0.42	
11,260.0	90.90	0.90	6,852.5	4,390.6	-1,370.9	4,594.8	0.47	-0.42	0.21	
11,356.0	92.60	358.60	6,849.6	4,486.5	-1,371.3	4,687.7	2.98	1.77	-2.40	
11,451.0	92.60	358.30	6,845.3	4,581.4	-1,373.9	4,780.1	0.32	0.00	-0.32	
11,547.0	93.00	356.90	6,840.6	4,677.2	-1,377.9	4,873.8	1.52	0.42	-1.46	
11,642.0	90.90	358.10	6,837.3	4,772.1	-1,382.0	4,966.6	2.55	-2.21	1.26	
11,738.0	90.60	357.40	6,836.1	4,868.0	-1,385.8	5,060.3	0.79	-0.31	-0.73	
11,834.0	90.00	357.20	6,835.6	4,963.9	-1,390.3	5,154.2	0.66	-0.63	-0.21	
11,929.0	90.70	357.40	6,835.0	5,058.8	-1,394.8	5,247.1	0.77	0.74	0.21	
12,024.0	90.30	357.40	6,834.2	5,153.7	-1,399.1	5,340.0	0.42	-0.42	0.00	
12,120.0	90.40	356.30	6,833.6	5,249.5	-1,404.4	5,434.1	1.15	0.10	-1.15	
12,189.0	90.30	356.50	6,833.2	5,318.4	-1,408.7	5,501.8	0.32	-0.14	0.29	
12,245.0	90.30	356.50	6,832.9	5,374.3	-1,412.1	5,556.7	0.00	0.00	0.00	

Company:	PDC Energy Inc. DJ Basin	Local Co-ordinate Reference:	Well J Clark 7N (Nio C)
Project:	SEC.14-T5N-R65W	TVD Reference:	WELL @ 4638.0ft (Original Well Elev)
Site:	Clark 5N65W14 1-21 Pad Sec.14-T5N-R65W	MD Reference:	WELL @ 4638.0ft (Original Well Elev)
Well:	J Clark 7N (Nio C)	North Reference:	True
Wellbore:	J Clark 7N (Nio C) Wellbore #1	Survey Calculation Method:	Minimum Curvature
Design:	J Clark 7N (Nio C) Wellbore #1	Database:	US_EDM

Design Targets									
Target Name	Dip Angle	Dip Dir.	TVD	+N/-S	+E/-W	Northing	Easting	Latitude	Longitude
- hit/miss target	(°)	(°)	(ft)	(ft)	(ft)	(usft)	(usft)		
- Shape									
SHL 550'FNL & 2084'FE - survey hits target center - Point	0.00	0.00	1.0	0.0	0.0	1,391,636.27	3,242,680.95	40.405170	-104.628566
BHL 500'FNL & 1800'FW - survey misses target center by 2.9ft at 12245.0ft MD (6832.9 TVD, 5374.3 N, -1412.1 E) - Point	0.00	0.00	6,835.0	5,375.2	-1,410.5	1,396,997.08	3,241,217.79	40.419924	-104.633632

Survey Annotations				
Measured Depth	Vertical Depth	Local Coordinates		Comment
(ft)	(ft)	+N/-S (ft)	+E/-W (ft)	
7,083.6	6,797.6	232.8	-1,284.9	TPZ - 60° in curve - 312'FNL & 1890'FWL, Sec.14
7,740.0	6,881.8	872.5	-1,314.6	Deepest TVD Drilled - 6881.8'

Checked By: _____ Approved By: _____ Date: _____