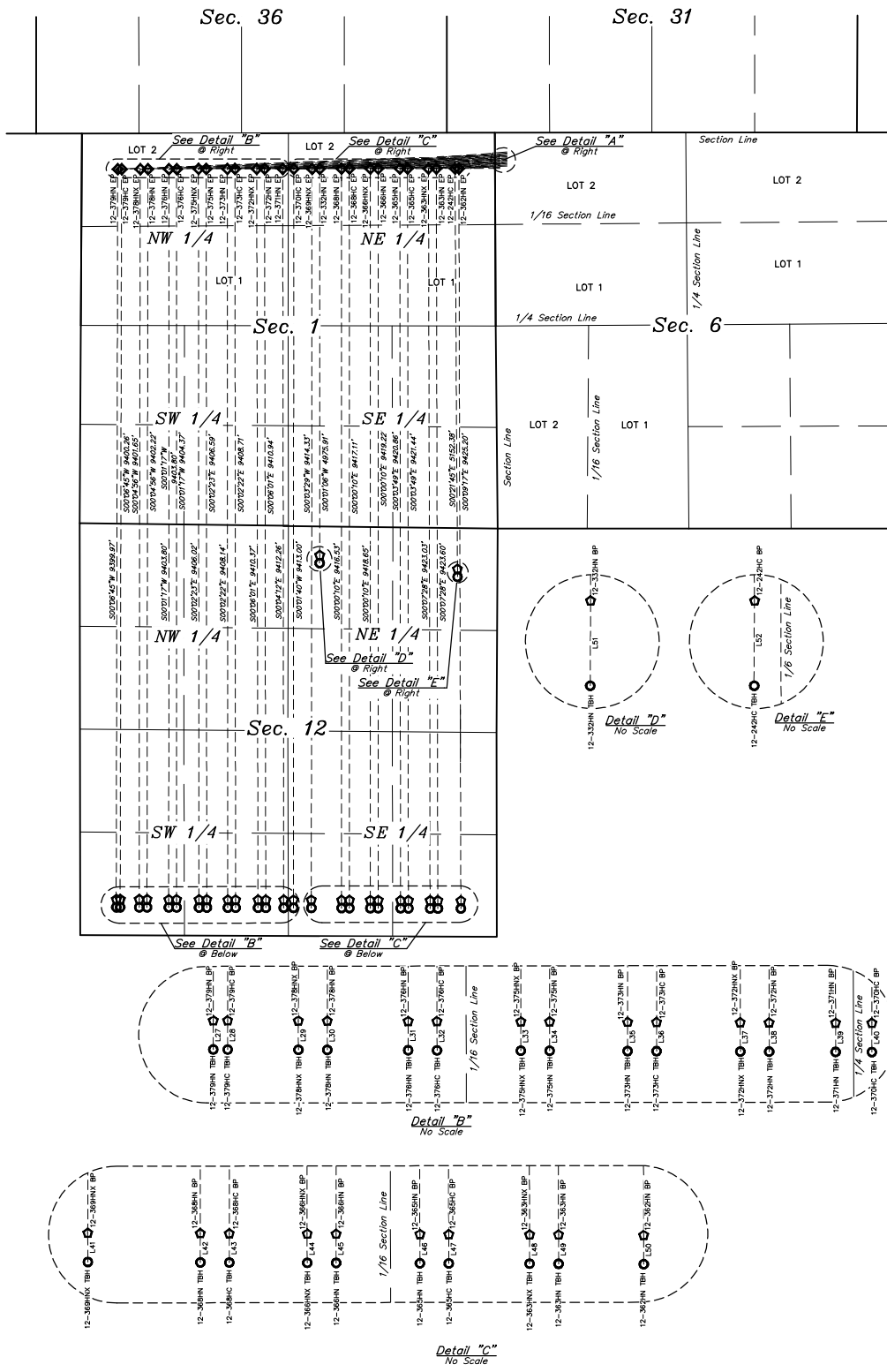
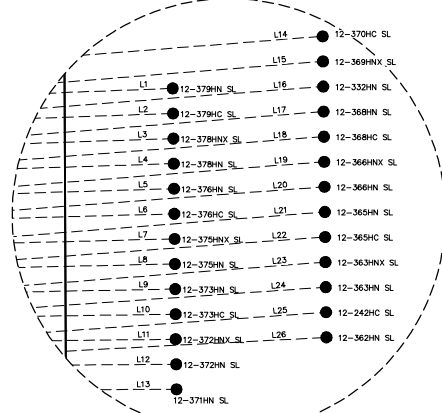


LEGEND:
 ● = PROPOSED WELLHEAD.
 ○ = ENTRY POINT.
 ○ = BTM PERF.
 ○ = TARGET BOTTOM HOLE.
 SL = SURFACE HOLE LOCATION.
 EP = ENTRY POINT.
 BP = BTM PERF.
 TBH = TARGET BOTTOM HOLE.

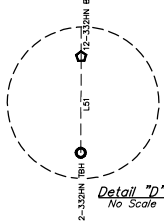


WELD CO.
ADAMS CO.

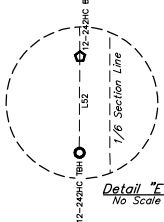
T1N
T1S



Detail "A"
No Scale



Detail "D"
No Scale



Detail "F"
No Scale

LINE TABLE			LINE TABLE		
LINE	DIRECTION	LENGTH	LINE	DIRECTION	LENGTH
L1	S87°47'36"W	4924.27'	L27	S00°04'29"E	100.00'
L2	S87°56'53"W	4873.93'	L28	S00°04'29"E	100.00'
L3	S88°01'57"W	4833.71'	L29	S00°04'29"E	100.00'
L4	S88°10'52"W	4533.45'	L30	S00°04'29"E	100.00'
L5	S88°16'26"W	4263.28'	L31	S00°04'29"E	100.00'
L6	S88°26'29"W	4163.07'	L32	S00°04'29"E	100.00'
L7	S88°33'28"W	3882.94'	L33	S00°04'29"E	100.00'
L8	S88°44'58"W	3782.80'	L34	S00°04'29"E	100.00'
L9	S88°54'22"W	3512.72'	L35	S00°04'29"E	100.00'
L10	S89°07'44"W	3412.66'	L36	S00°04'29"E	100.00'
L11	S89°20'04"W	3132.66'	L37	S00°04'29"E	100.00'
L12	S89°35'57"W	3032.70'	L38	S00°04'29"E	100.00'
L13	S89°52'53"W	2797.82'	L39	S00°04'29"E	100.00'
L14	S89°59'06"W	2751.98'	L40	S00°04'40"E	100.00'
L15	S89°24'51"W	2516.68'	L41	S00°04'40"E	100.00'
L16	S89°35'01"W	2415.98'	L42	S00°04'40"E	100.00'
L17	S89°25'13"W	2135.82'	L43	S00°04'40"E	100.00'
L18	S89°37'18"W	2035.12'	L44	S00°04'40"E	100.00'
L19	S89°27'16"W	1764.92'	L45	S00°04'40"E	100.00'
L20	S89°42'10"W	1664.23'	L46	S00°04'40"E	100.00'
L21	S89°28'30"W	1384.06'	L47	S00°04'40"E	100.00'
L22	S89°47'56"W	1283.38'	L48	S00°04'40"E	100.00'
L23	S89°33'16"W	1013.16'	L49	S00°04'40"E	100.00'
L24	S89°01'07"W	912.51'	L50	S00°04'40"E	100.00'
L25	S89°54'23"W	672.20'	L51	S00°16'29"W	100.00'
L26	S89°57'48"W	621.55'	L52	S00°16'29"W	100.00'

REV: 1 09-13-18 C.V.I.E. (PAD NAME CHANGE)

GREAT WESTERN OPERATING COMPANY

RIO PAD
NW 1/4 NW 1/4, SECTION 6, T1S, R67W, 6th P.M.
ADAMS COUNTY, COLORADO

SURVEYED BY	MATTHEW MILLER, R.W.	06-28-18	SCALE
DRAWN BY	B.T.B.	07-10-18	1" = 1000'
MULTI-Well PLAN			FIGURE #5



UELS, LLC
Corporate Office • 85 South 200 East
Vernal, UT 84078 • (435) 789-1017