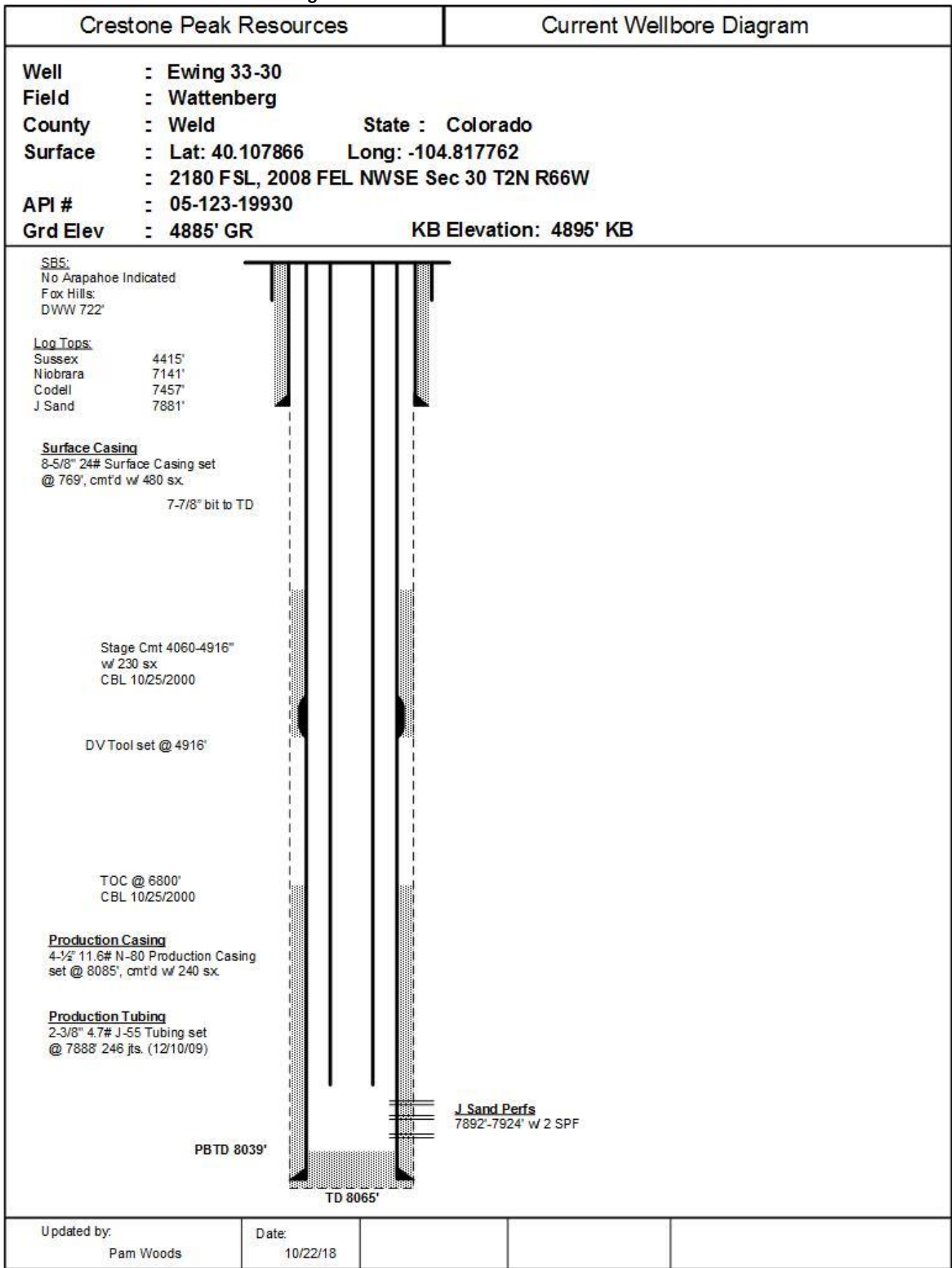


Attachment #1 – Current Wellbore Diagram



Attachment #2 – Proposed Plugged Wellbore Diagram

Crestone Peak Resources		Proposed Wellbore Diagram	
<b>Well</b>	: Ewing 33-30		
<b>Field</b>	: Wattenberg		
<b>County</b>	: Weld	<b>State</b>	: Colorado
<b>Surface</b>	: Lat: 40.107866 Long: -104.817762		
	: 2180 FSL, 2008 FEL NWSE Sec 30 T2N R66W		
<b>API #</b>	: 05-123-19930		
<b>Grd Elev</b>	: 4885' GR	<b>KB Elevation</b>	: 4895' KB
<p><b>SBS:</b> No Arapahoe Indicated Fox Hills: 430'-676' DWW 722'</p> <p><b>Log Tops:</b> Sussex 4415' Niobrara 7141' Codell 7457' J Sand 7881'</p> <p><b>Surface Casing</b> 8-5/8" 24# Surface Casing set @ 769', cmt'd w/ 480 sx. 7-7/8" bit to TD</p> <p>Stage Cmt 4060-4916" w/ 230 sx CBL 10/25/2000</p> <p>DV Tool set @ 4916'</p> <p>TOC @ 6800' CBL 10/25/2000</p> <p><b>Production Casing</b> 4-1/2" 11.6# N-80 Production Casing set @ 8085', cmt'd w/ 240 sx.</p> <p><b>J Sand Perfs</b> 7892'-7924' w/ 2 SPF</p> <p>PBTD 8039'</p> <p>TD 8065'</p> <p>CIBP set @ 80' w/ 20 sx cement to surface</p> <p>75 sx balanced plug ~619' - 820' Calculated with 30% excess in OH</p> <p>75 sx balanced plug 2,004' – 2,200' Calculated w/ 30% excess in OH 4-1/2" casing cut at 2,200'</p> <p>30 sx balanced plug ~ 4105'-4500'</p> <p>20 sx balanced plug ~ 4736-5000'</p> <p>CIBP set @ 7080' w/ 2 sx cement</p> <p>CIBP set @ 7830' w/ 2 sx cement</p>			
Updated by:	Pam Woods	Date:	10/22/18