

# HALLIBURTON

iCem<sup>®</sup> Service

**EXTRACTION OIL & GAS-EBUS**

**Rinn Valley 17N-20-15C Surface**

Sincerely,  
**Meghan Jacobs**

## Legal Notice

---

### Disclaimer:

All information in this report is provided subject to the terms and conditions which govern the services provided by Halliburton. Halliburton personnel use their best efforts in gathering information and their best judgment in interpreting it, but any interpretation, research, analysis or recommendation furnished by Halliburton are opinions based upon inferences from measurements and empirical relationships and assumptions, which inferences and empirical relationships and assumptions are not infallible, and with respect to which professionals in the industry may differ. iCem 3D Displacement results are used to understand how fluids intermix during a cement job. Simulation and 3D displacement results are not intended as and should not be used as a replacement for bond logs in determining top of cement. Current 3D model calculations are known to model more volume than the input volume for standard cases due to known calculation improvements required. For rotational cases, the modeled volume will be impacted by the same calculations impacting the standard cases, as well as additional constraints imposed to make the calculation time required operationally feasible. Therefore, until further notice, 3D displacement results should not be used for replacement of a bond log, or used as an identifier of top of cement. HALLIBURTON IS UNABLE TO GUARANTEE THE ACCURACY OF ANY CHART INTERPRETATION, RESEARCH ANALYSIS, OR JOB RECOMMENDATION and any interpretation or recommendation is not for use of or reliance upon by any third party. The customer has full responsibility for any of its decisions which are based on the information provided in this report.

Table of Contents

---

1.0    Cementing Job Summary ..... 4

    1.1    Executive Summary .....4

2.0    Real-Time Job Summary ..... 7

    2.1    Job Event Log .....7

3.0    Attachments..... 9

    3.1    Rinn Valley 17N-20-15C Surface – Job Chart with Events .....9

    3.2    Rinn Valley 17N-20-15C Surface – Job Chart without Events .....10

    3.3

## 1.0 Cementing Job Summary

---

### 1.1 Executive Summary

---

Halliburton appreciates the opportunity to perform the cementing services on the **Rinn Valley 17N-20-15C** cement **Surface** casing job. A pre-job safety meeting was held before the job where details of the job were discussed, potential safety hazards were reviewed, and environmental compliance procedures were outlined.

**Approximately 27bbls of cement were returned to surface.**

Halliburton maintains a continuous quality improvement process and appreciates any comments or suggestions that you may have. Halliburton again thanks you for the opportunity to perform service work on this well. We hope to be your solutions provider for future projects.

Respectfully,

**Halliburton [Ft. Lupton]**

## HALLIBURTON

## Cementing Job Summary

*The Road to Excellence Starts with Safety*

Sold To #: 369404	Ship To #: 3888576	Quote #:	Sales Order #: 0904976113							
Customer: EXTRACTION OIL & GAS -		Customer Rep: Sean McIntyre								
Well Name: RINN VALLEY EAST	Well #: N17-20-15C	API/UWI #: 05-123-47175-00								
Field: WATTENBERG	City (SAP): FIRESTONE	County/Parish: WELD	State: COLORADO							
Legal Description: SE SE-18-2N-68W-202FSL-589FEL										
Contractor: Shawn McIntyre		Rig/Platform Name/Num: Cartel 11								
Job BOM: 7521 7521										
Well Type: HORIZONTAL OIL										
Sales Person: HALAMERICA\HX38199		Srv Supervisor: Thomas Haas								
Job										
Formation Name										
Formation Depth (MD)	Top	Bottom								
Form Type	BHST									
Job depth MD	1611ft	Job Depth TVD	1611							
Water Depth		Wk Ht Above Floor	6'							
Perforation Depth (MD)	From	To								
Well Data										
Description	New / Used	Size in	ID in	Weight lbm/ft	Thread	Grade	Top MD ft	Bottom MD ft	Top TVD ft	Bottom TVD ft
Open Hole Section			13.5				0	1606	0	1604
Casing	0	9.625	8.921	36	8 RD	J-55	0	1611	0	1611
Tools and Accessories										
Type	Size in	Qty	Make	Depth ft		Type	Size in	Qty	Make	
Guide Shoe	9.625					Top Plug	9.625	1	HES	
Float Shoe	9.625	1		1611		Bottom Plug	9.625			
Float Collar	9.625	1		1569		SSR plug set	9.625			
Insert Float	9.625					Plug Container	9.625	1	HES	
Stage Tool	9.625					Centralizers	9.625			
Fluid Data										
Stage/Plug #: 1										
Fluid #	Stage Type	Fluid Name	Qty	Qty UoM	Mixing Density lbm/gal	Yield ft3/sack	Mix Fluid Gal	Rate bbl/min	Total Mix Fluid Gal	
1	Red Dye Spacer	Red Dye Spacer	40	bbl	8.33			4	1680	
Stage/Plug #: 2										
Fluid #	Stage Type	Fluid Name	Qty	Qty UoM	Mixing Density lbm/gal	Yield ft3/sack	Mix Fluid Gal	Rate bbl/min	Total Mix Fluid Gal	
2	SwiftCem	SWIFTCCEM (TM) SYSTEM	550	sack	13.5	1.74	9.2	5	5060	

## HALLIBURTON

*Cementing Job Summary*

Fluid #	Stage Type	Fluid Name	Qty	Qty UoM	Mixing Density lbm/gal	Yield ft3/sack	Mix Fluid Gal	Rate bbl/min	Total Mix Fluid Gal
3	Fresh Water	Fresh Water	121	bbl	8.33				
Cement Left In Pipe		Amount	42 ft		Reason			Shoe Joint	
Mix Water:		pH 7	Mix Water Chloride:			<300 ppm		Mix Water Temperature:	
Cement Temperature:		N/A	Plug Displaced by:			8.33 lb/gal F.W.		Disp. Temperature:	
Plug Bumped?		Yes	Bump Pressure:			460 psi		Floats Held?	
Cement Returns:		27 bbl	Returns Density:			N/A		Returns Temperature:	
Comment Plug bumped at calculated displacement, final circulating pressure of 460 psi, held 5 min casing test at 1250 psi, released pressure back to truck, floats held, 1bbl back to the truck. 27 bbl cement back to surface									

## 2.0 Real-Time Job Summary

### 2.1 Job Event Log

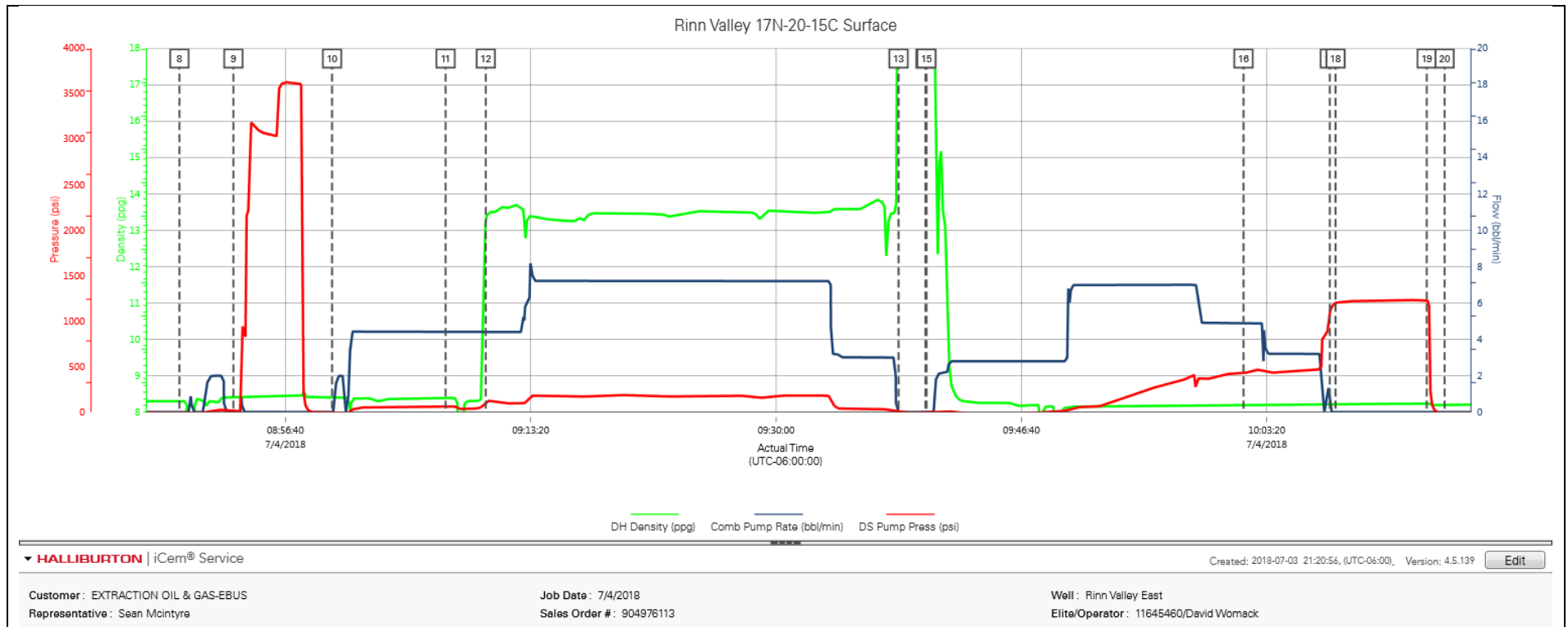
Type	Seq. No.	Activity	Graph Label	Date	Time	Source	DH Density (ppg)	Comb Pump Rate (bbl/min)	DS Pump Press (psi)	Comments
Event	1	Call Out	Call Out	7/3/2018	18:00:00	USER				CREW CALLED OUT AT 18:00 7/3/2018, REQUESTED ON LOCATION 4:00 7/4/2018. CREW PICKED UP CEMENT, 100 LBS SUGAR, AND PLUG CONTAINER FROM FORT LUPTON, CO. BULK 660: 11062210/10867439 Bulk 660: 11138996 PUMP ELITE: 11897034/11645460
Event	2	Pre-Convoy Safety Meeting	Pre-Convoy Safety Meeting	7/3/2018	22:15:00	USER				DISCUSSED ROUTES, HAZARDS, AND COMMUNICATION WITH CREW
Event	3	Crew Leave Yard	Crew Leave Yard	7/3/2018	22:30:00	USER				STARTED JOURNEY MANAGEMENT.
Event	4	Arrive At Loc	Arrive At Loc	7/4/2018	04:00:00	USER				END JOURNEY MANAGEMENT. MEET WITH CO. MAN TO DISCUSS JOB; SURFACE CASING: 36# 9.625" J-55 @ 1611', 42' SHOE JOINT, 13.5" OPEN HOLE, 8.6 PPG WELL FLUID, FRESH WATER DISPLACEMENT.
Event	5	Pre-Rig Up Safety Meeting	Pre-Rig Up Safety Meeting	7/4/2018	07:15:00	USER				HAZARD HUNT. DISCUSSED POSSIBLE HAZARDS ASSOCIATED WITH LOCATION, RIG UP AND WEATHER.
Event	6	Rig-Up Equipment	Rig-Up Equipment	7/4/2018	07:30:00	USER				CREW STAGED EQUIPMENT AND RIGGED UP BULK, IRON, AND WATER HOSES TO PERFORM JOB.
Event	7	Pre-Job Safety Meeting	Pre-Job Safety Meeting	7/4/2018	08:00:00	USER	8.32	0.00	-2.00	MEETING WITH HALLIBURTON AND RIG PERSONNEL. COMMUNICATED POTENTIAL SAFETY HAZARDS AND JOB DETAILS.
Event	8	Start Job	Start Job	7/4/2018	08:49:28	COM4	8.30	0.00	-7.00	BEGIN JOB DATA RECORDING.
Event	9	Test Lines	Test Lines	7/4/2018	08:53:08	COM4	8.41	0.00	9.00	PRESSURE TESTED IRON TO 3650 PSI. KICKOUTS SET @ 500 PSI, KICKED OUT @ 800 PSI, 5TH GEAR STALL OUT @2040 PSI.
Event	10	Pump Spacer 1	Pump Spacer 1	7/4/2018	08:59:50	COM4	8.41	0.00	-3.00	PUMP 30 BBL FRESH WATER SPACER.
Event	11	Pump Spacer 2	Pump Spacer 2	7/4/2018	09:07:33	COM4	8.36	4.40	54.00	PUMP 10 BBL FRESH WATER WITH RED DYE.

Event	12	Pump Cement	Pump Cement	7/4/2018	09:10:17	COM4	13.28	4.40	115.00	PUMP 550 SKS OF SWIFTCEM @ 13.5 LB/GAL, 1.74 YIELD, 9.2 GAL/SK, 170 BBLS, TOL @ SURFACE, DENSITY VERIFIED BY PRESSURIZED MUD SCALES.
Event	13	Shutdown	Shutdown	7/4/2018	09:38:19	COM4	20.95	0.00	3.00	SHUTDOWN TO DROP TOP PLUG.
Event	14	Drop Top Plug	Drop Top Plug	7/4/2018	09:40:09	COM4	18.54	0.00	-10.00	PLUG LEFT PLUG CONTAINER.
Event	15	Pump Displacement	Pump Displacement	7/4/2018	09:40:13	COM4	18.53	0.00	-10.00	BEGIN DISPLACEMENT OF 121 BBL FRESH WATER.
Event	16	Displ Reached Cement	Cement Reached Surface	7/4/2018	10:01:45	COM4	8.19	4.90	454.00	CEMENT REACHED SURFACE AT 94 BBL INTO DISPLACEMENT, 27 BBL CMT TO SURFACE.
Event	17	Bump Plug	Bump Plug	7/4/2018	10:07:37	COM4	8.21	0.00	1096.00	PLUG BUMPED AT CALCULATED DISPLACEMENT.
Event	18	Other	5 Min Casing Test	7/4/2018	10:08:00	USER	8.21	0.00	1203.00	HELD 5 MIN CASING TEST AT 1250 PSI.
Event	19	Other	Check Floats	7/4/2018	10:14:12	COM4	8.23	0.00	1230.00	RELEASED PRESSURE BACK TO THE TRUCK, 1 BBL BACK.
Event	20	End Job	End Job	7/4/2018	10:15:25	COM4	8.20	0.00	-13.00	END JOB DATA RECORDING.
Event	21	Pre-Rig Down Safety Meeting	Pre-Rig Down Safety Meeting	7/4/2018	10:20:00	USER	8.22	0.00	4.00	DISCUSSED POSSIBLE HAZARDS ASSOCIATED WITH WEATHER, LOCATION AND RIGGING DOWN IRON AND HOSES.
Event	22	Rig-Down Completed	Rig-Down Completed	7/4/2018	11:15:00	USER				ALL HALLIBURTON ITEMS WERE STOWED FOR TRAVEL.
Event	23	Pre-Convoy Safety Meeting	Pre-Convoy Safety Meeting	7/4/2018	11:20:00	USER				DISCUSSED ROUTES HAZARDS AND COMMUNICATION WITH CREW.
Event	24	Crew Leave Location	Crew Leave Location	7/4/2018	11:30:00	USER				THANK YOU FOR USING HALLIBURTON - THOMAS HAAS AND CREW.



## 3.0 Attachments

### 3.1 Rinn Valley 17N-20-15C Surface – Job Chart with Events



## 3.2 Rinn Valley 17N-20-15C Surface – Job Chart without Events

