

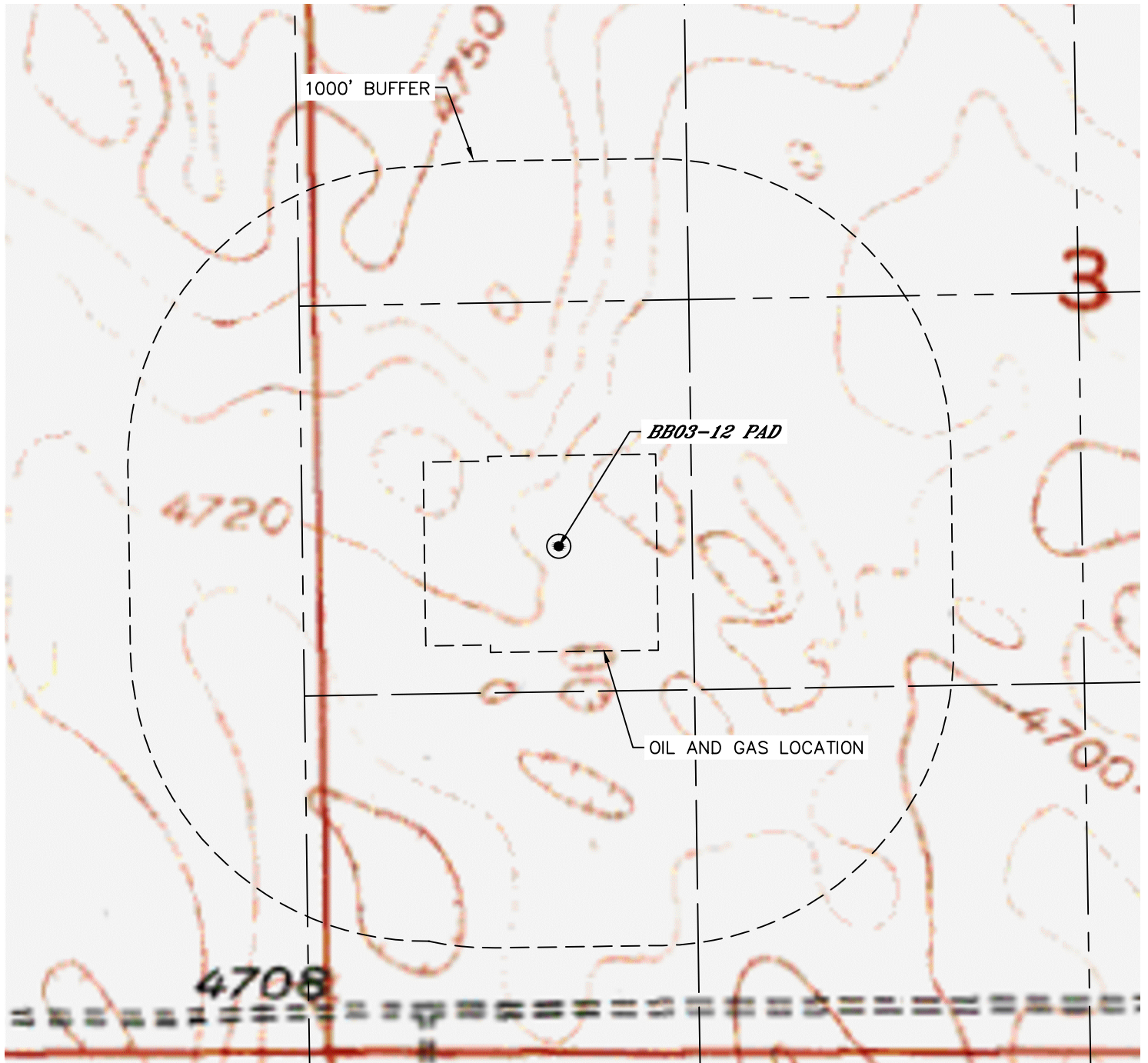


Lat40°, Inc. 6250 W. 10th Street, Unit 2, Greeley, CO 970-515-5294

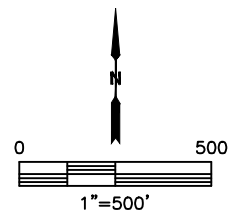
HYDROLOGY MAP

BB03-12 PAD

SECTION: 3
TOWNSHIP: 5N
RANGE: 63W
6TH. P.M.
WELD COUNTY, CO



DISTANCES MEASURED FROM THE EDGE OF THE OIL AND GAS LOCATION.



NO VISIBLE SURFACE WATER WITHIN 1000'

DATE: 12/13/2017
PROJECT#: 2017093