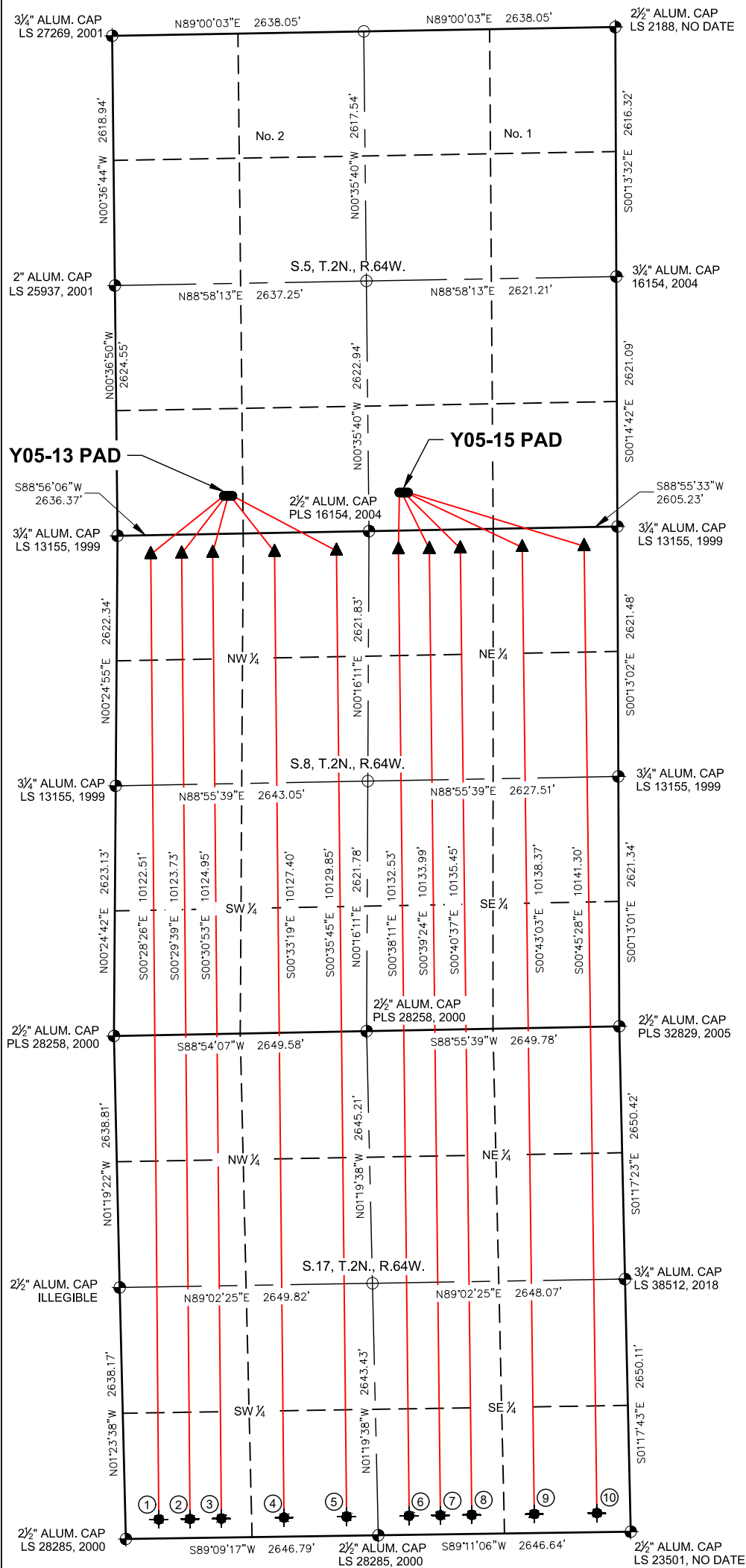
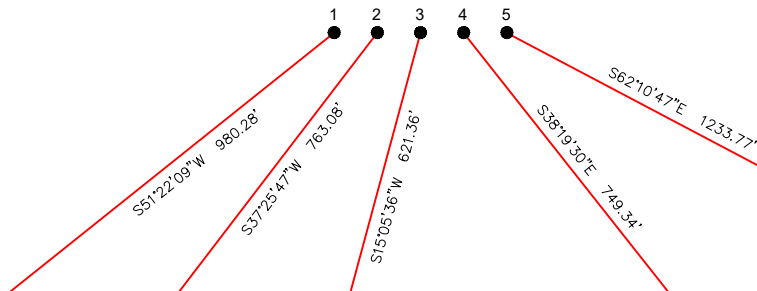


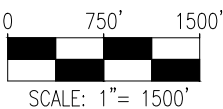
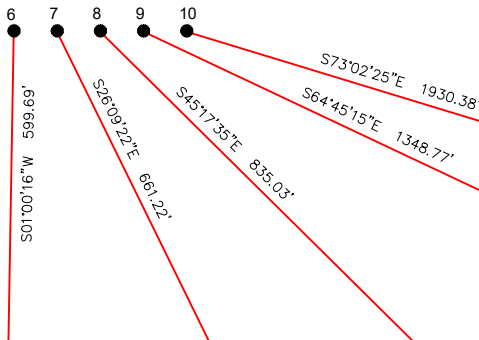
Y05-13 & Y05-15 PAD
MULTI-WELL LOCATION PLAT / MULTI-WELL PLAN
T2N R64W SECTION 5



PROPOSED WELLBORE DIRECTION DATA
Y05-13 PAD
SLOTS 1-5



PROPOSED WELLBORE DIRECTION DATA
Y05-15 PAD
SLOTS 6-10





LEGEND

- FOUND MONUMENT
- CALCULATED POSITION
- PROPOSED WELL
- BOTTOM HOLE
- TOP OF PRODUCTION ZONE

Notes:
1) All bearings are Grid Bearings of the Colorado State Plane Coordinate System, North Zone, North American Datum 1983/2011. The lineal dimensions as shown herein are grid distances based upon the "U.S. Survey Foot." To get ground distances multiply shown distance by 1.000271.
2) Distances are measured at 90° from section line of the Sixth Principal Meridian, County of Weld, State of Colorado.
3) Ground elevations are based on an observed GPS elevation (NAVD 1988 DATUM).
4) Surface use: "RANGELAND"
5) Instrument Operator: Dominick Davis
6) This map does not represent a boundary survey.

DISCLAIMER:
THIS PLOT DOES NOT REPRESENT A MONUMENTED LAND SURVEY AND SHOULD NOT BE RELIED UPON TO DETERMINE BOUNDARY LINES, PROPERTY OWNERSHIP OR OTHER PROPERTY INTERESTS. PARCEL LINES, IF DEPICTED HAVE NOT BEEN FIELD VERIFIED AND MAY BE BASED UPON PUBLICLY AVAILABLE DATA THAT ALSO HAS NOT BEEN INDEPENDENTLY VERIFIED.

SURFACE HOLE LOCATION							TOP OF PRODUCTIVE ZONE		BOTTOM HOLE LOCATION		
SLOT	WELL NAME	LATITUDE	LONGITUDE	FOOTAGE		QTR-QTR	ELEV.	FOOTAGE		FOOTAGE	
1	PIONEER Y17-785	40.16119°N	104.58065°W	398' FSL	1119' FWL	SWSW	4855'	200' FNL	350' FWL	200' FSL	350' FWL
2	PIONEER Y17-780	40.16119°N	104.58057°W	397' FSL	1141' FWL	SWSW	4856'	200' FNL	674' FWL	200' FSL	678' FWL
3	PIONEER Y17-775	40.16119°N	104.58049°W	397' FSL	1164' FWL	SWSW	4856'	200' FNL	999' FWL	200' FSL	1006' FWL
4	PIONEER Y17-765	40.16119°N	104.58041°W	396' FSL	1186' FWL	SWSW	4856'	200' FNL	1648' FWL	200' FSL	1662' FWL
5	PIONEER Y17-755	40.16119°N	104.58033°W	396' FSL	1209' FWL	SWSW	4856'	200' FNL	2297' FWL	200' FSL	2319' FWL
6	PIONEER Y17-745	40.16124°N	104.57407°W	399' FSL	2284' FEL	SWSE	4865'	200' FNL	2297' FEL	200' FSL	2319' FEL
7	PIONEER Y17-740	40.16123°N	104.57399°W	399' FSL	2262' FEL	SWSE	4866'	200' FNL	1973' FEL	200' FSL	1991' FEL
8	PIONEER Y17-735	40.16123°N	104.57391°W	398' FSL	2239' FEL	SWSE	4867'	200' FNL	1648' FEL	200' FSL	1662' FEL
9	PIONEER Y17-725	40.16123°N	104.57383°W	398' FSL	2217' FEL	SWSE	4869'	200' FNL	999' FEL	200' FSL	1006' FEL
10	PIONEER Y17-715	40.16123°N	104.57375°W	398' FSL	2194' FEL	SWSE	4870'	200' FNL	350' FEL	200' FSL	350' FEL
<div><div></div><div>7535 Hilltop Circle Denver, CO 80221 (303) 928-7128 www.ascentgeomatics.com</div></div>		<div>FIELD DATE: 09-22-18</div> <div>DRAWN BY: ACM</div>	<div>DRAWING DATE: 09-24-18</div> <div>CHECKED BY: SMF</div>	<div>SURFACE LOCATION:</div> <div>SEC. 5, T2N, R64W, 6TH P.M.</div> <div>WELD COUNTY, COLORADO</div>		<div>PUBLICLY AVAILABLE DATA SOURCES HAVE NOT BEEN INDEPENDENTLY VERIFIED BY ASCENT.</div>			<div></div>		