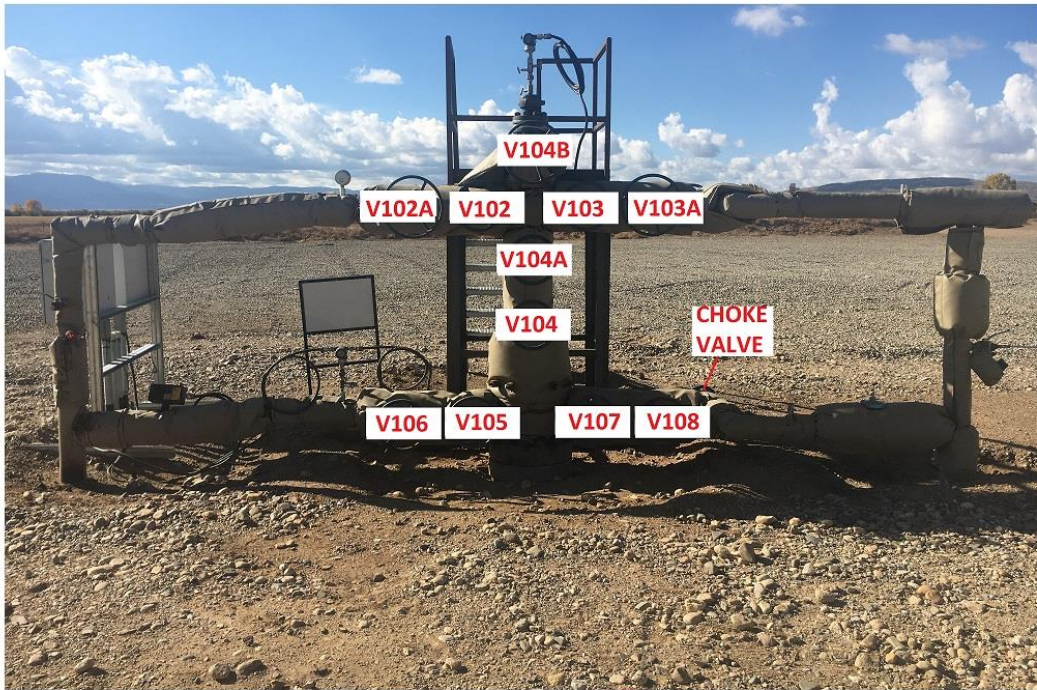


JET PUMP UNIT OPERATING PROCEDURES APPENDIX- SANDRIDGE



SANDRIDGE JACKSON COUNTY COLORADO JET PUMP WELLHEAD





JET PUMP UNIT OPERATING PROCEDURES APPENDIX- SANDRIDGE



SANDRIDGE JACKSON COUNTY COLORADO JET PUMP POWER FLUID VESSEL

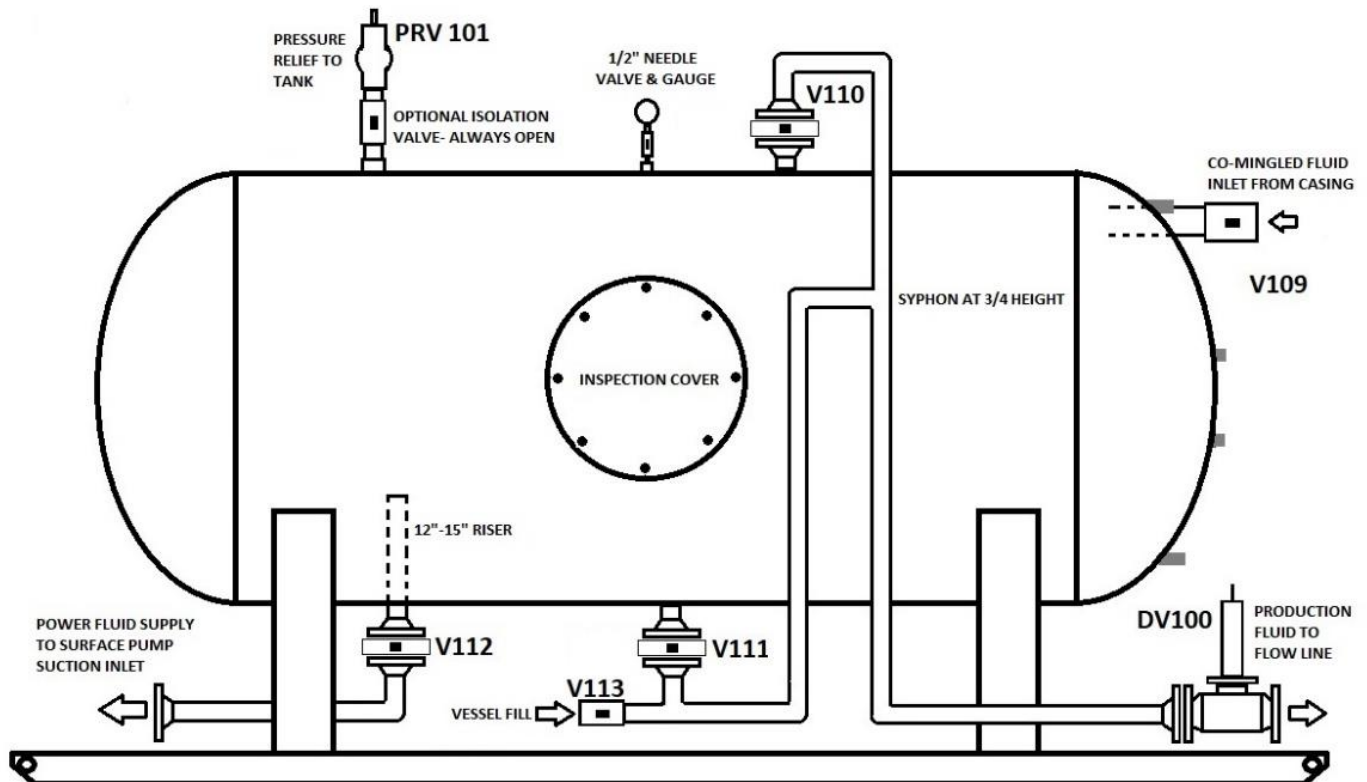




JET PUMP UNIT OPERATING PROCEDURES APPENDIX- SANDRIDGE



POWER FLUID PRESSURE VESSEL



Not to Scale

Created July 6, 2018



JET PUMP UNIT OPERATING PROCEDURES APPENDIX- SANDRIDGE



VALVE IDENTIFICATION KEY

DV100- Vessel Dump Valve Outlet

PRV 100- Surface Pump Pressure Relief Valve

PRV 101- Vessel Pressure Relief Valve

V100- Surface Pump Suction Inlet

V101- Surface Pump Discharge Outlet

V102- Wellhead JPU Manifold

V103- Wellhead JPU Manifold

V104- Wellhead Tubing Master

V105- Wellhead Casing Master Left

V106- Wellhead JPU Manifold- if equipped for sacrificial valve

V107- Wellhead Casing Master Right

V108- Wellhead JPU Manifold- if equipped for sacrificial valve

V109- Vessel Mixed Fluid Inlet From Casing Outlet

V110- Vessel Top Syphon Outlet

V111- Vessel Bottom Syphon Outlet

V112- Surface Pump Suction Supply Outlet

V113- Vessel Fill Valve Inlet

Created July 6, 2018



JET PUMP UNIT OPERATING PROCEDURES APPENDIX- SANDRIDGE

Additional Jet Pump Power Fluid Vessel Picture - Typical



Powder River Hydraulics, LLC
16698 Prospect Lane
Broomfield, CO 80023

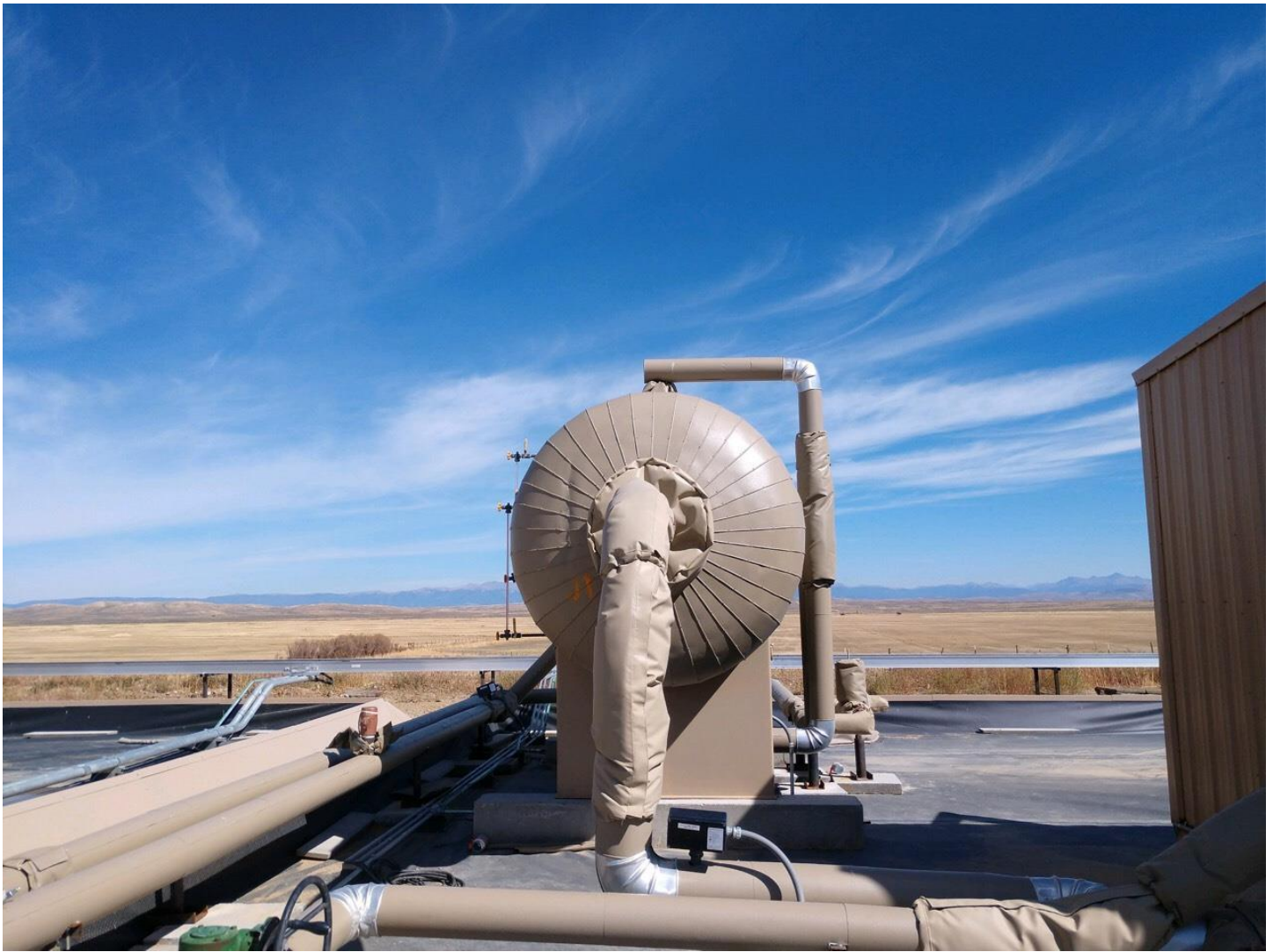
P: (303) 941-6312
ryank@prhus.com

This document is uncontrolled if printed or disseminated outside of Powder River Hydraulics, LLC.



JET PUMP UNIT OPERATING PROCEDURES APPENDIX- SANDRIDGE

Additional Jet Pump Power Fluid Vessel Picture - Typical



Powder River Hydraulics, LLC
16698 Prospect Lane
Broomfield, CO 80023

P: (303) 941-6312
ryank@prhus.com

This document is uncontrolled if printed or disseminated outside of Powder River Hydraulics, LLC.



JET PUMP UNIT OPERATING PROCEDURES APPENDIX- SANDRIDGE

Additional Jet Pump Power Fluid Vessel Picture - Typical



Powder River Hydraulics, LLC
16698 Prospect Lane
Broomfield, CO 80023

P: (303) 941-6312
ryank@prhus.com

This document is uncontrolled if printed or disseminated outside of Powder River Hydraulics, LLC.



JET PUMP UNIT OPERATING PROCEDURES APPENDIX- SANDRIDGE

Additional Jet Pump Power Fluid Vessel Picture - Typical



Powder River Hydraulics, LLC
16698 Prospect Lane
Broomfield, CO 80023

P: (303) 941-6312
ryank@prhus.com

This document is uncontrolled if printed or disseminated outside of Powder River Hydraulics, LLC.