



NOISE SURVEY LOG

PIONEER
Pioneer Energy Services

Company **K.P. KAUFMANN**

COMPL# 200446018
API# 123-12420

Well **MAUL 20-2**

Doc# 2303086

Field

WATTENBERG

Date: 10/01/2018

County **WELD**

State **COLORADO**

Location: **API # : 05-123-12420**

1650' FNL & 990' FEL

SE NE

SEC 20 TWP 1N RGE 65W

TEMP / CCL

Permanent Datum **GL** Elevation **4962'**

Log Measured From **KB** **10'** Above Perm. Datum

Drilling Measured From **KB**

Elevation **K.B. 4972'**
D.F. N/A
G.L. 4962'

Date of Service **25 SEPTEMBER 2018**

Run Number **ONE**

Depth Driller or P8TD **6500'**

Depth Logger **N/A**

Bottom Log Interval **6300'**

Top Log Interval **1100'**

Open Hole Size **7.875"**

Type Fluid **WATER**

Fluid Level **800'**

Fluid Density **N/A**

Max. Recorded Temperature **208 F**

Max. Wellhead Pressure **ZERO**

Wellhead Connection **OPEN**

Estimated Cement Top **N/A**

Unit Number **P-132**

Wireline Size **9/32"**

Location **FORT MORGAN**

Recorded By **SCHOENROGGE**

Witnessed By **MR. RAMOS**

Size

Wt/Ft

Top

Bottom

Tubing Record

9.625"

36#

SURFACE

211'

Surface Casing

4.5"

11.6#

SURFACE

7900'

Production Casing

4.5"

11.6#

SURFACE

7900'

Liner Record

4.5"

11.6#

SURFACE

7900'

<<< Fold Here >>>

All interpretations are opinions based on inferences from electrical or other measurements and Pioneer Wireline Services, LLC cannot and does not guarantee the accuracy or correctness of any interpretation, and Pioneer Wireline Services, LLC will not be liable or responsible for any loss, costs, damages, or expenses incurred or sustained by anyone resulting from any interpretation made by any of our officers, agents or employees.

Comments

N/A DENOTES NOT AVAILABLE OR NON-APPLICABLE.

THANK YOU FOR USING PIONEER ENERGY SERVICES!

Your Pioneer Energy Services Crew

Tool Data - Services

Serial Number

Engineer: SCHOENROGGE

Operator: PARRISH

Operator:

Operator:

CCL-TEMP-NOISE

Top - Bottom

BHTEMP_Src	BOREID	BOTTEMP	CASEOD	CASETHCK	PERFS	SRFTEMP
TEMP	in	degF	in	in		degF
	7.875	208	4.5	0.25	0	50
TDEPTH						
ft						
6230						

Variable Description

BHTEMP_Src : BHTEMP Input Source Selector
BOREID : Borehole I.D.
BOTTEMP : Bottom Hole Temperature
CASEOD : Casing O.D.

CASETHCK : Casing Thickness
PERFS : Perforation Flag
SRFTEMP : Surface Temperature
TDEPTH : Total Depth

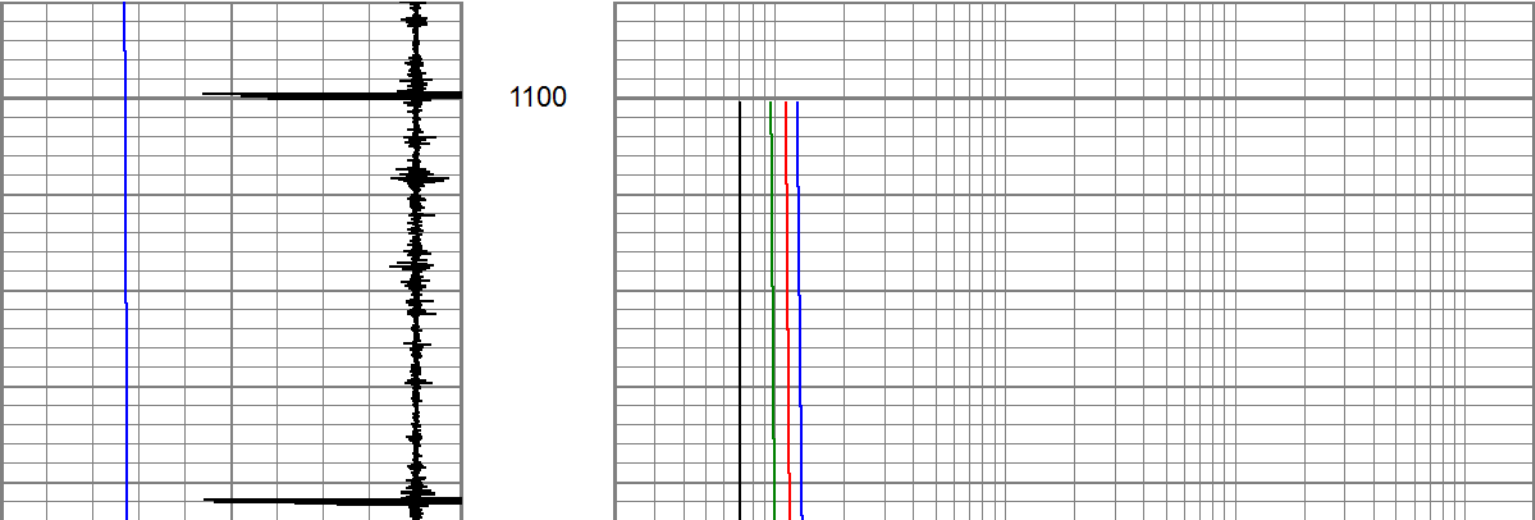
Survey Table: field/well/run1/_noise/_survtbl_/1

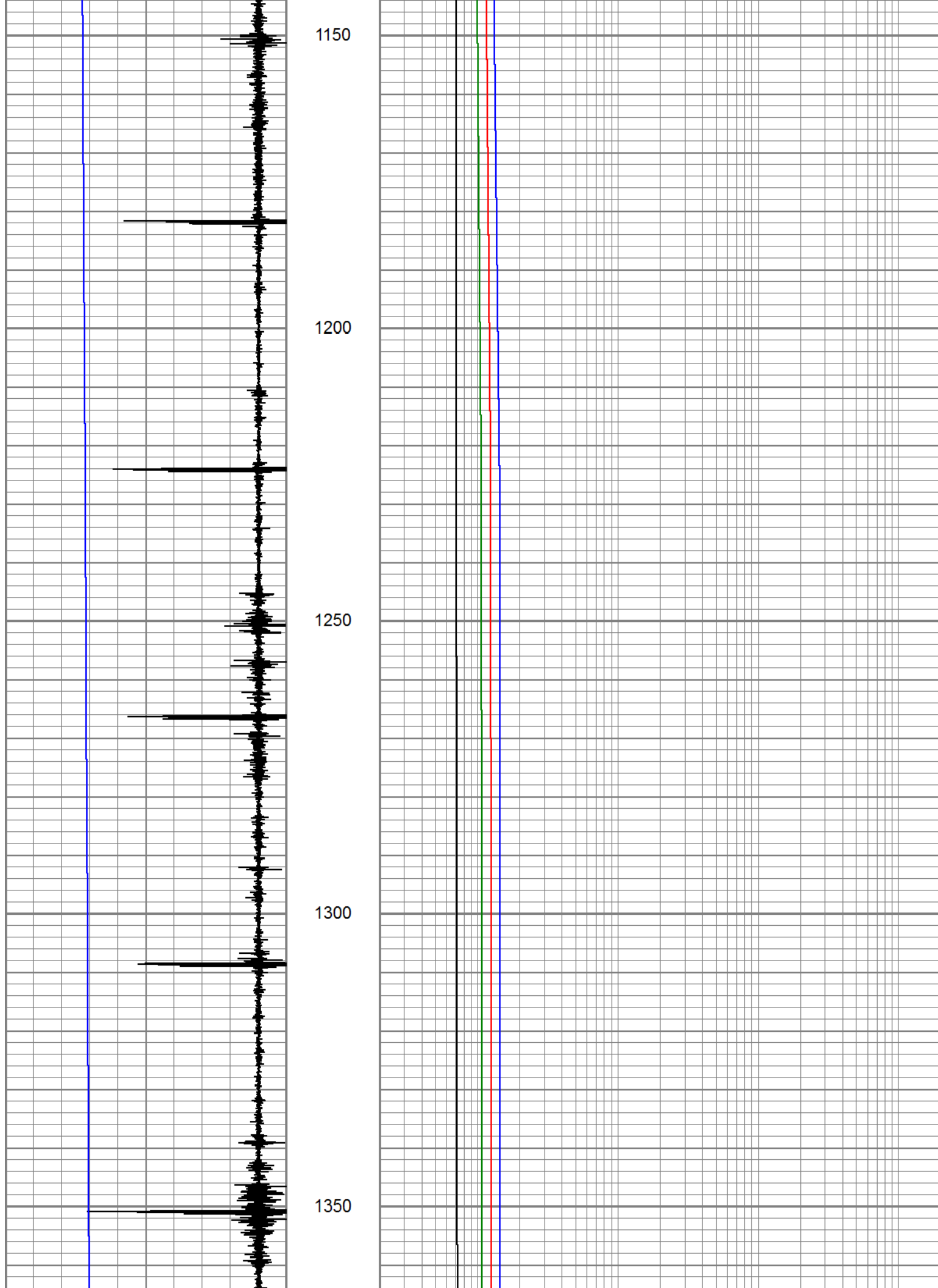
#	Depth	Time	200Hz	600Hz	1000Hz	2000Hz	4000Hz	6000Hz	
10	1100.52	11:59:36	12.4	11.1	9.5	7.0	4.6	3.4	
9	1224.36	11:55:08	14.2	12.3	10.5	7.0	4.9	3.3	
8	2224.42	11:48:17	14.7	13.5	11.9	7.9	5.3	3.6	
7	3224.41	11:42:08	17.6	14.0	12.5	9.0	5.8	3.9	
6	4224.41	11:35:30	17.3	15.0	13.3	9.7	5.8	3.8	
4	5224.42	11:27:58	26.6	23.3	20.9	13.8	8.0	5.4	
3	6224.20	11:17:21	27.1	24.6	21.2	13.9	8.5	5.9	

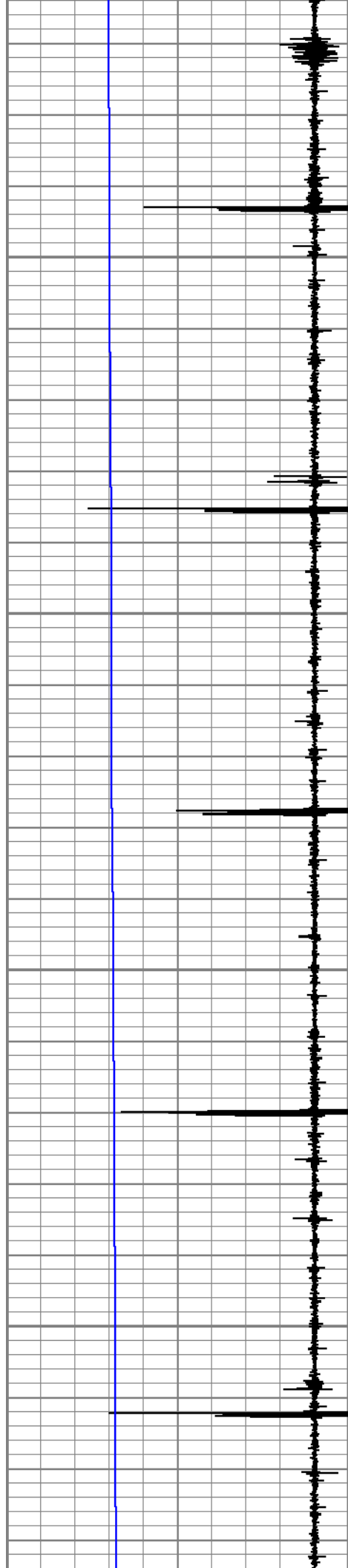
Database File
Dataset Pathname
Presentation Format
Dataset Creation
Charted by

kaufman.db
main
pinr_noise
Tue Sep 25 12:03:31 2018
Depth in Feet scaled 1:240

-9	CCL	1	2	2000HZ (mV)	20000
25	TEMP (degF)	225	2	1000HZ (mV)	20000
			2	600HZ (mV)	20000
			2	200HZ (mV)	20000





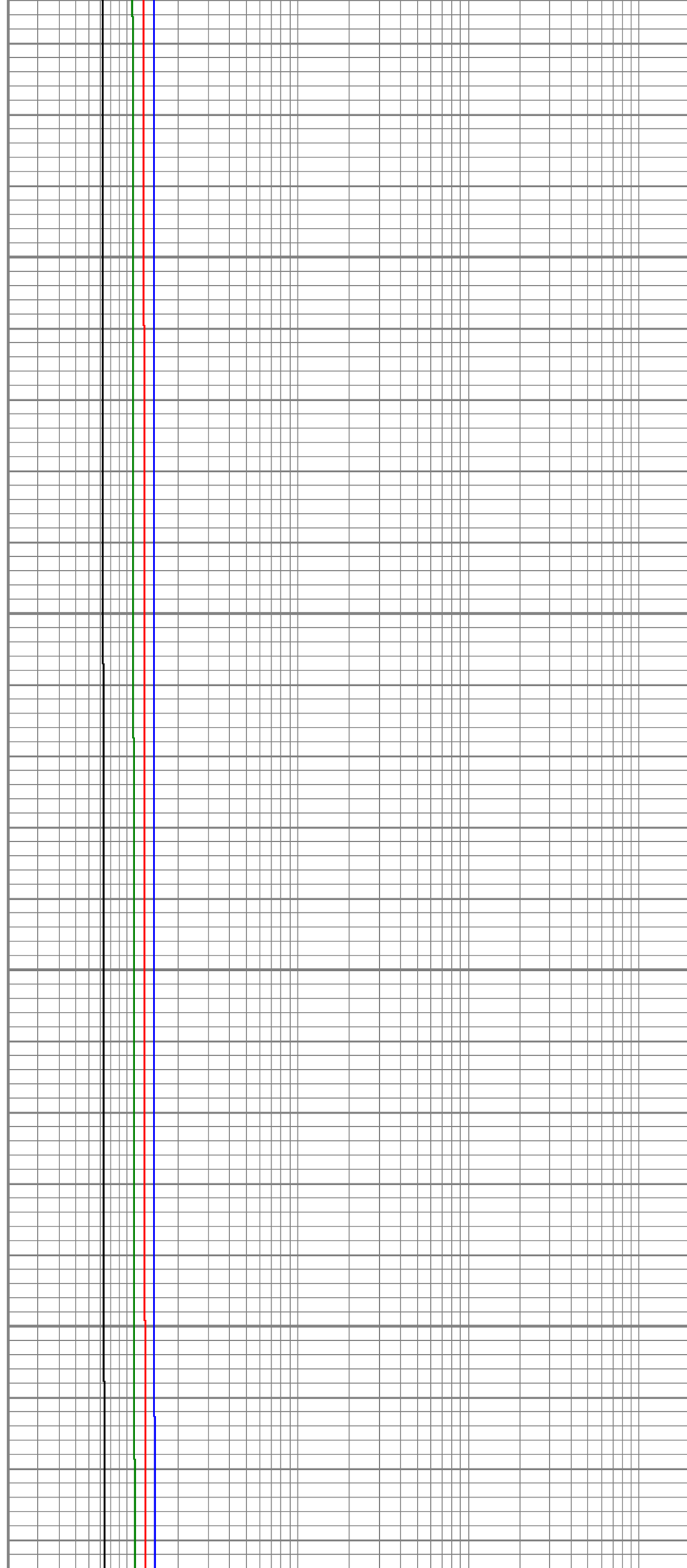


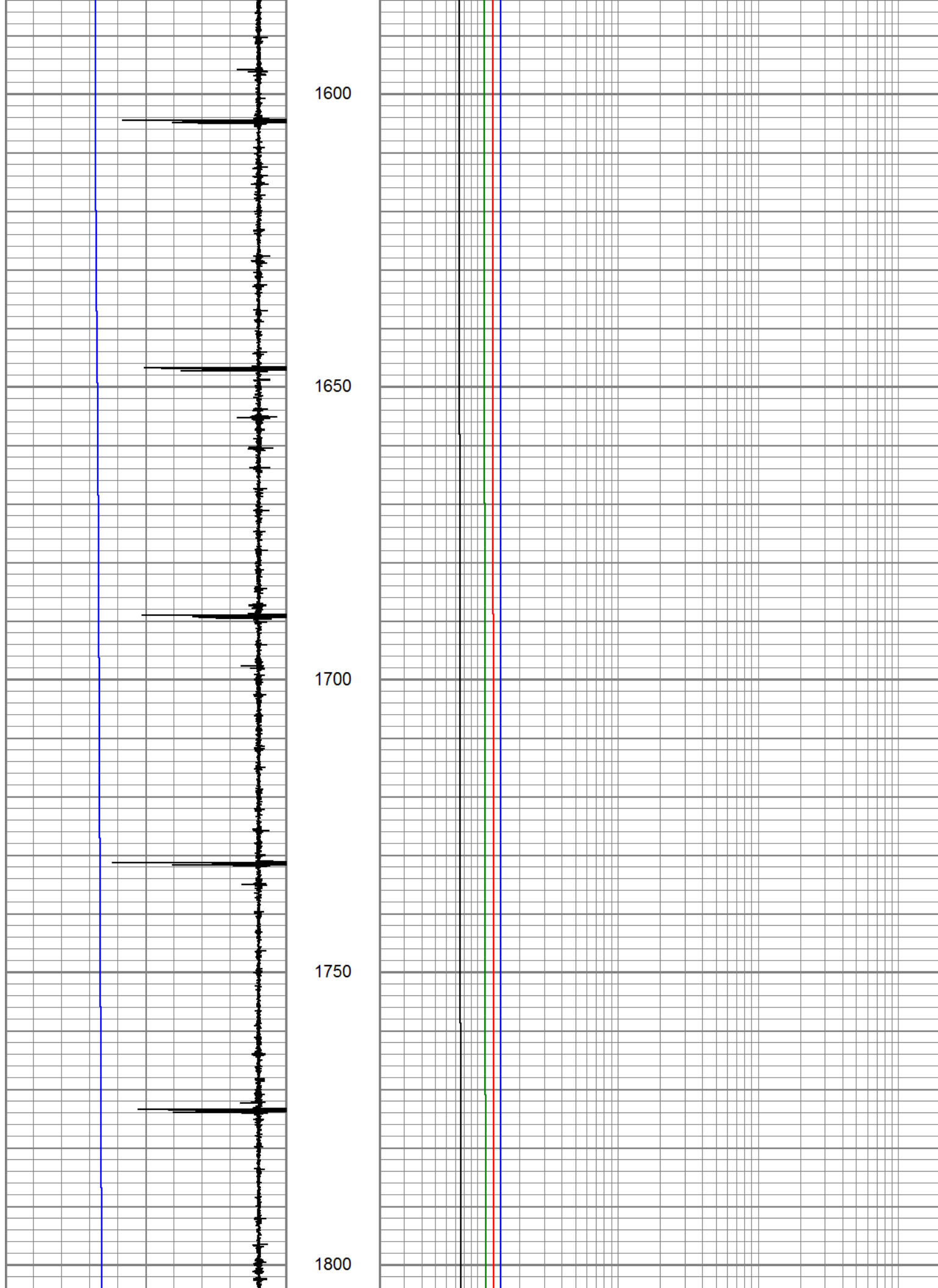
1400

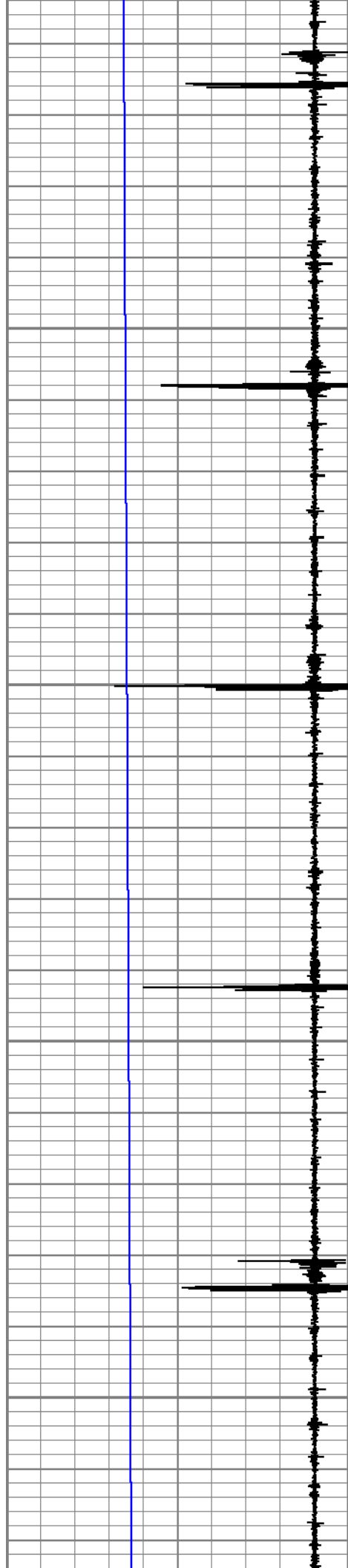
1450

1500

1550





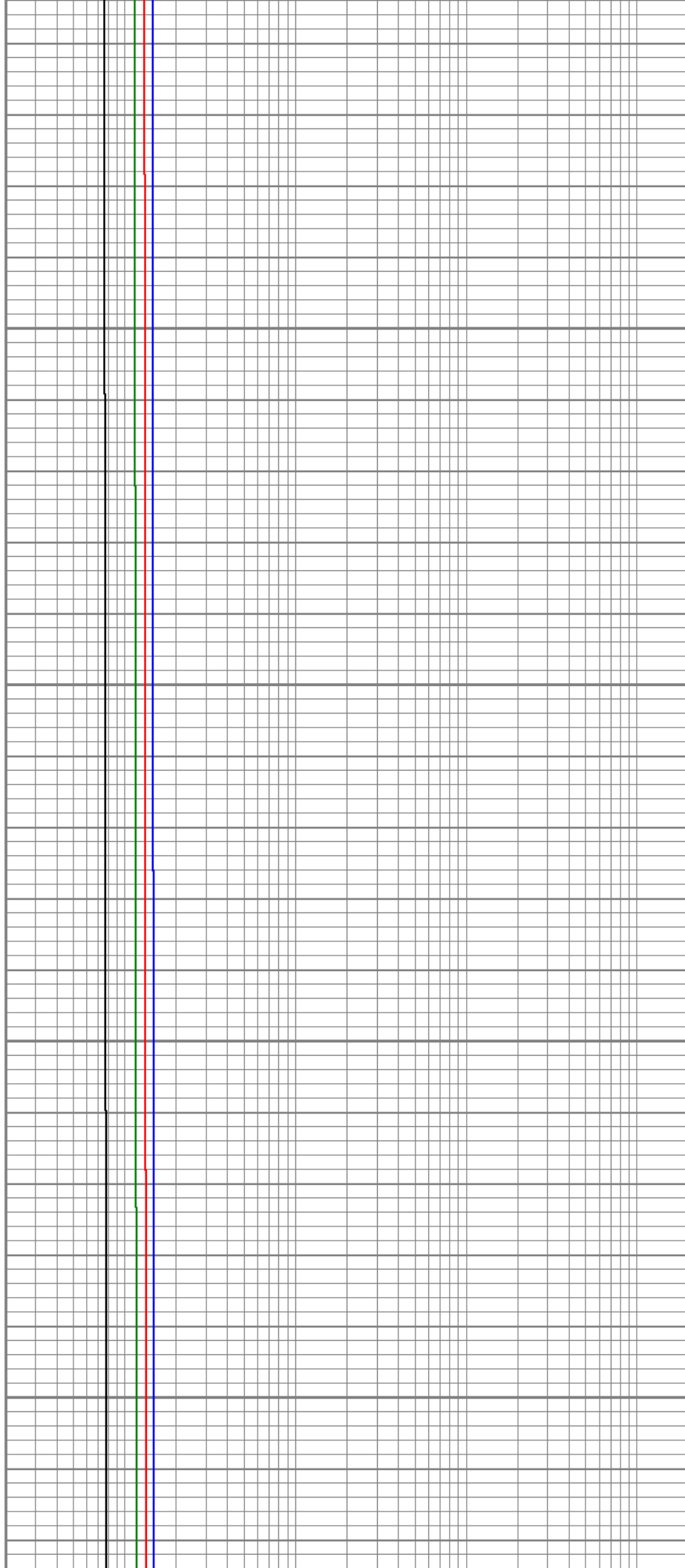


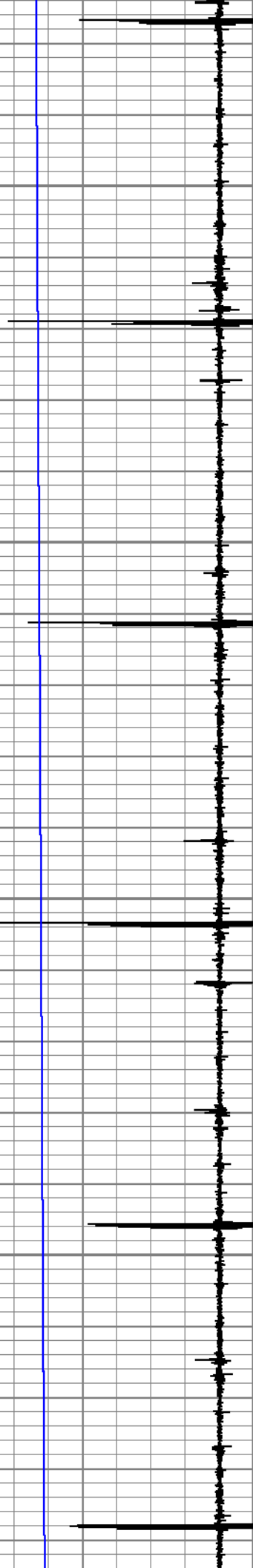
1850

1900

1950

2000



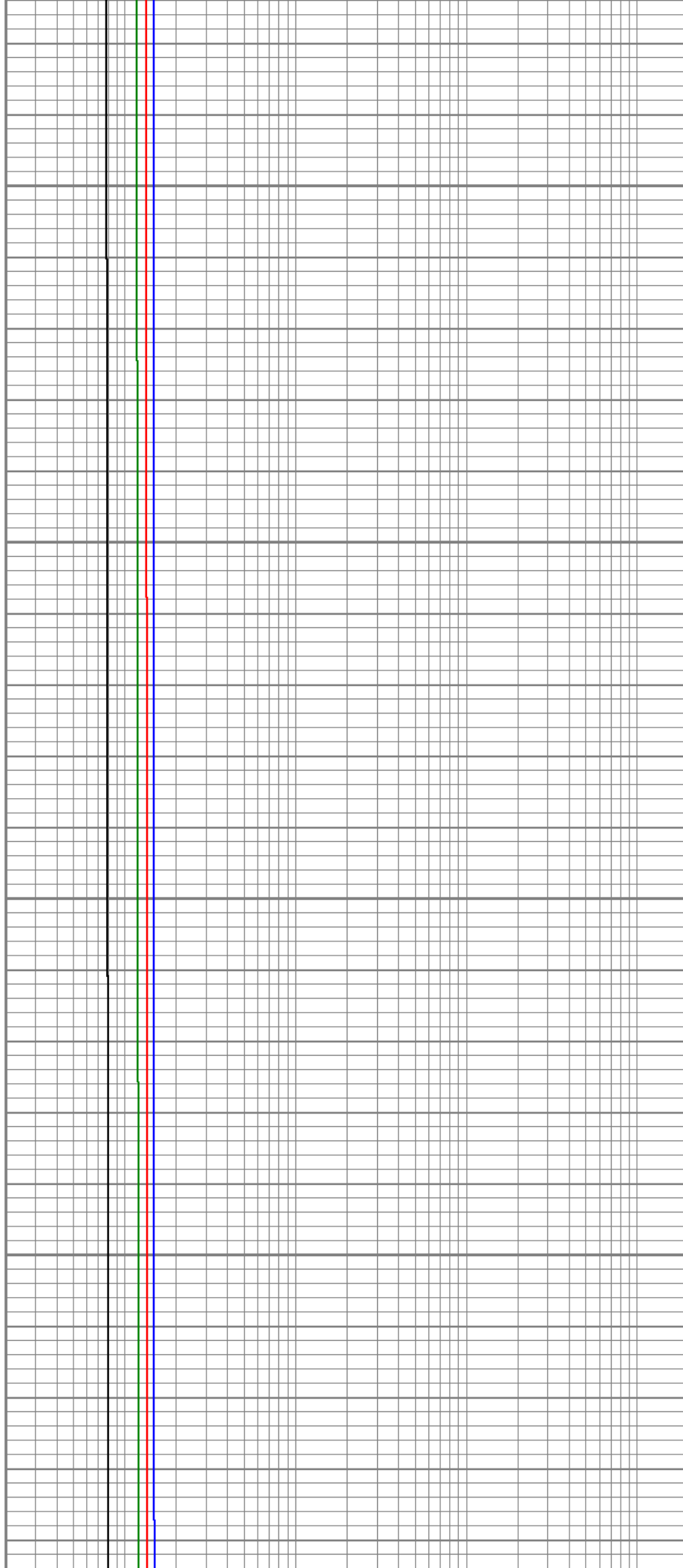


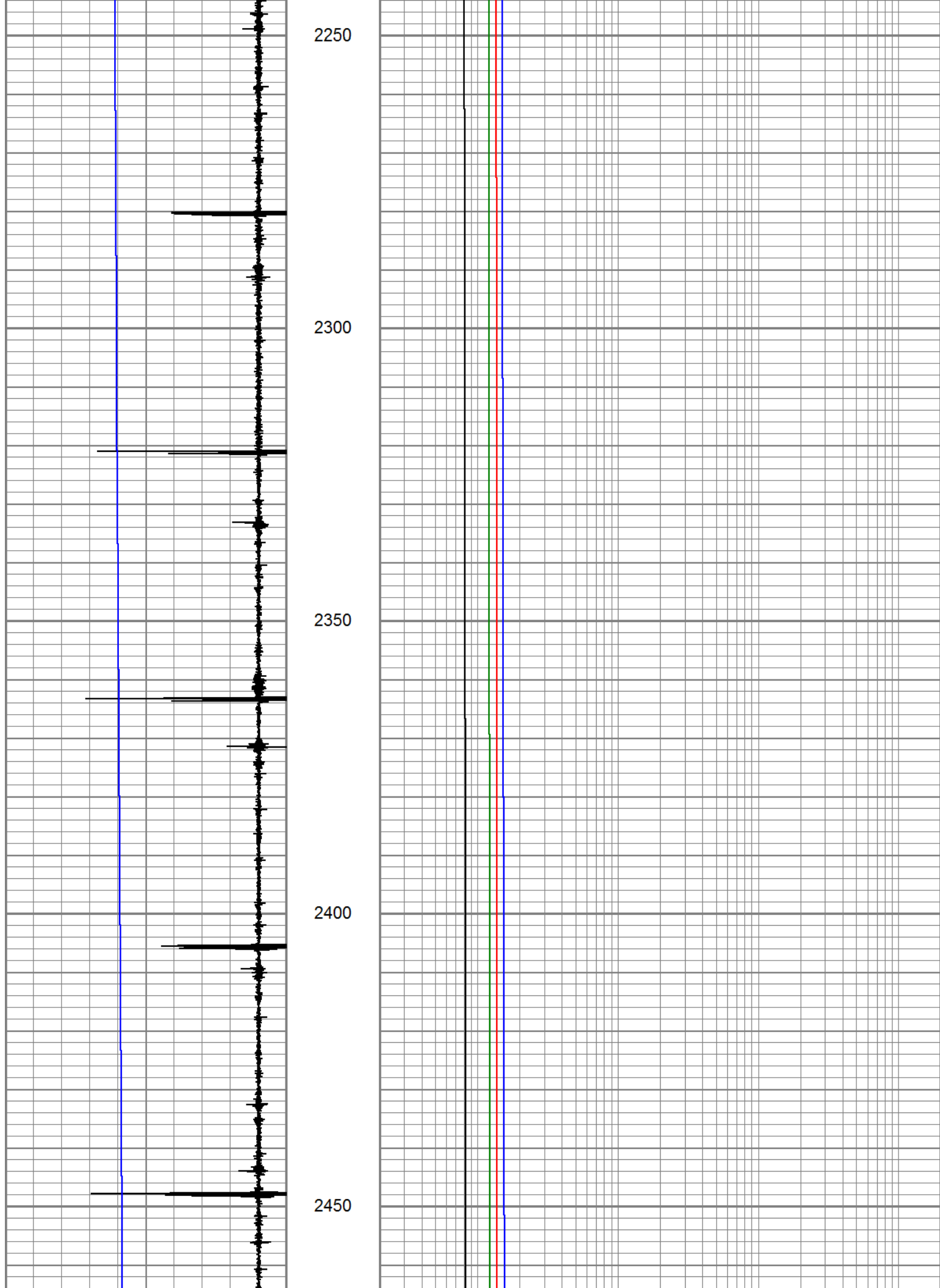
2050

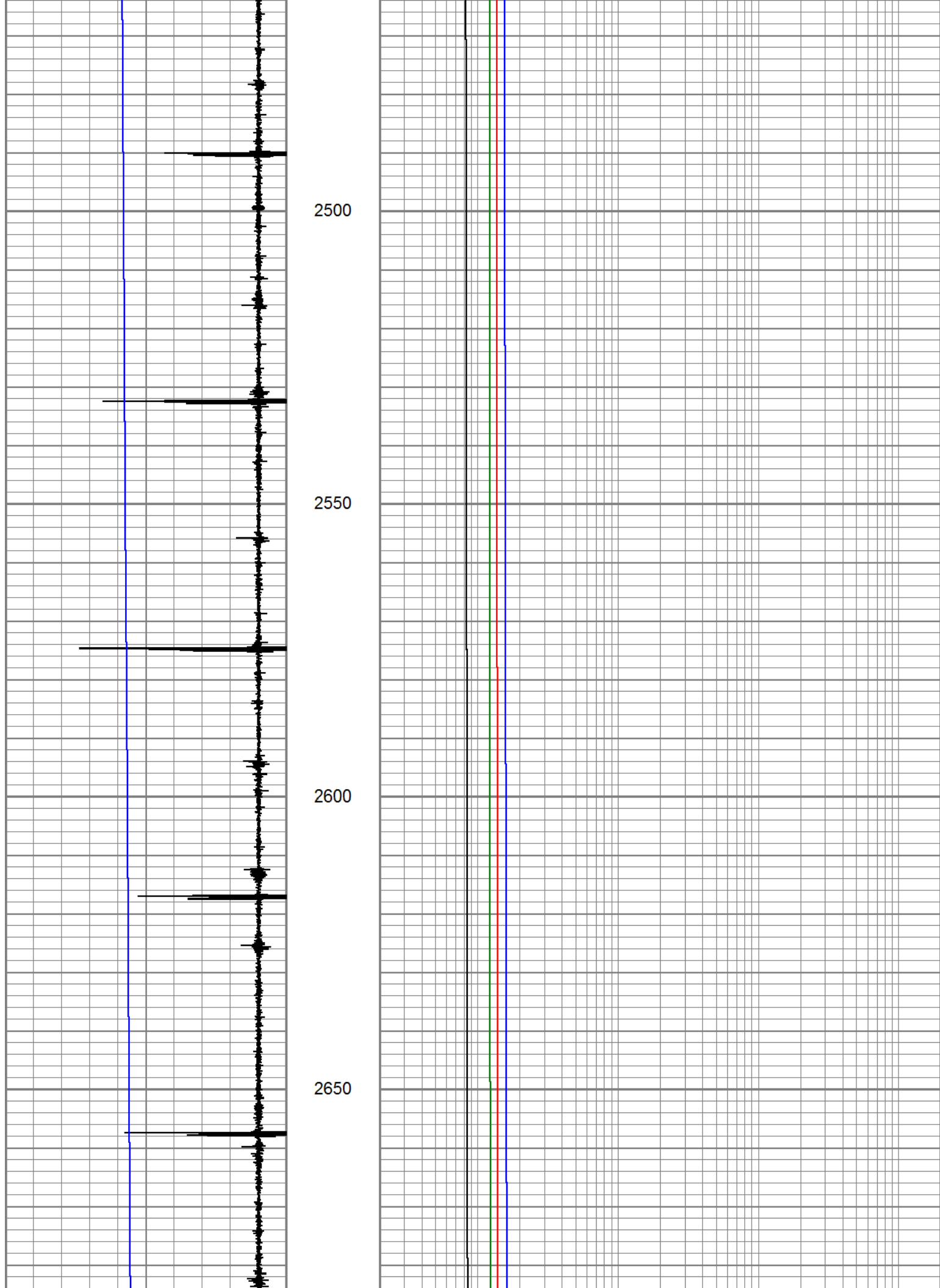
2100

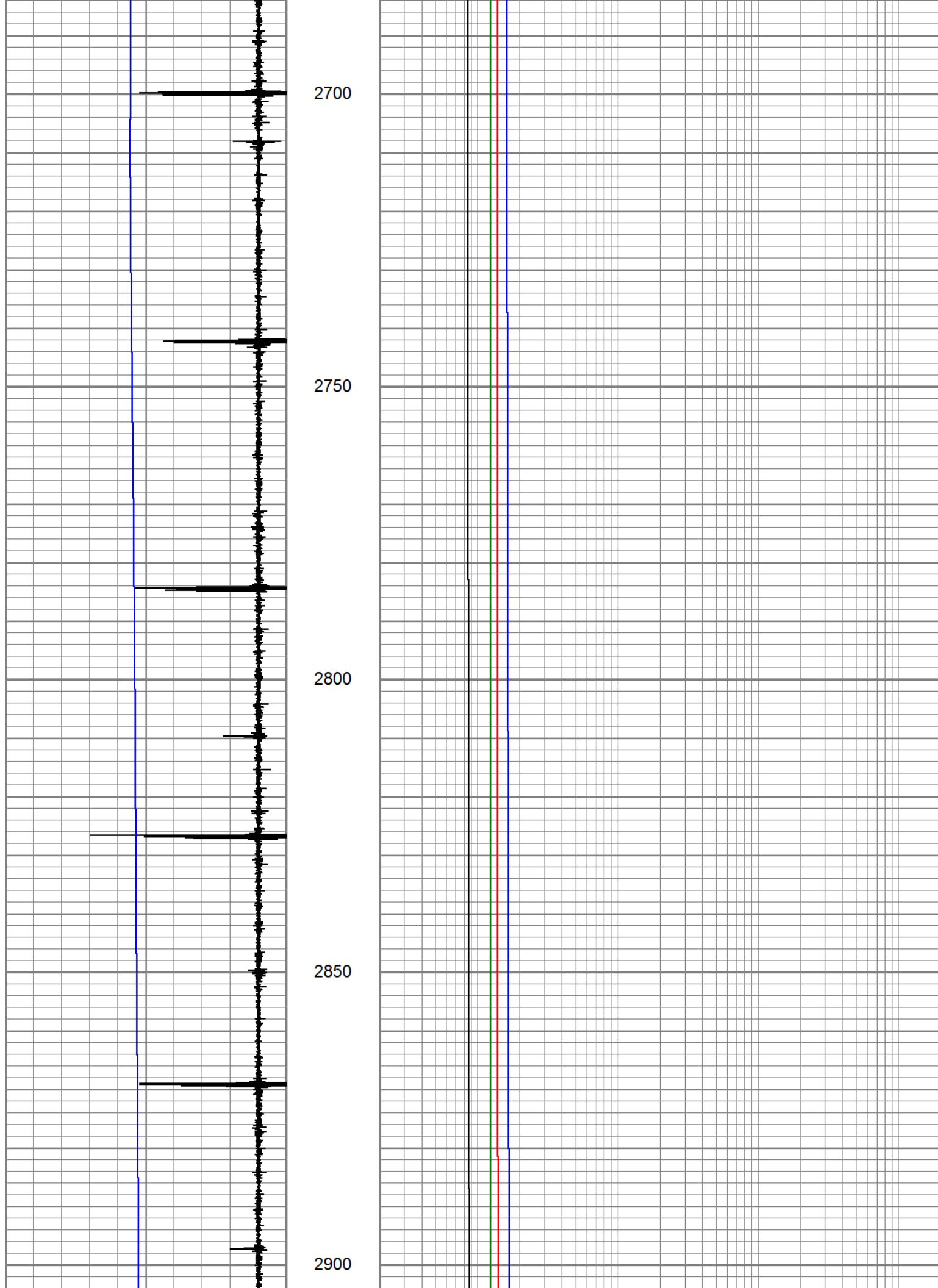
2150

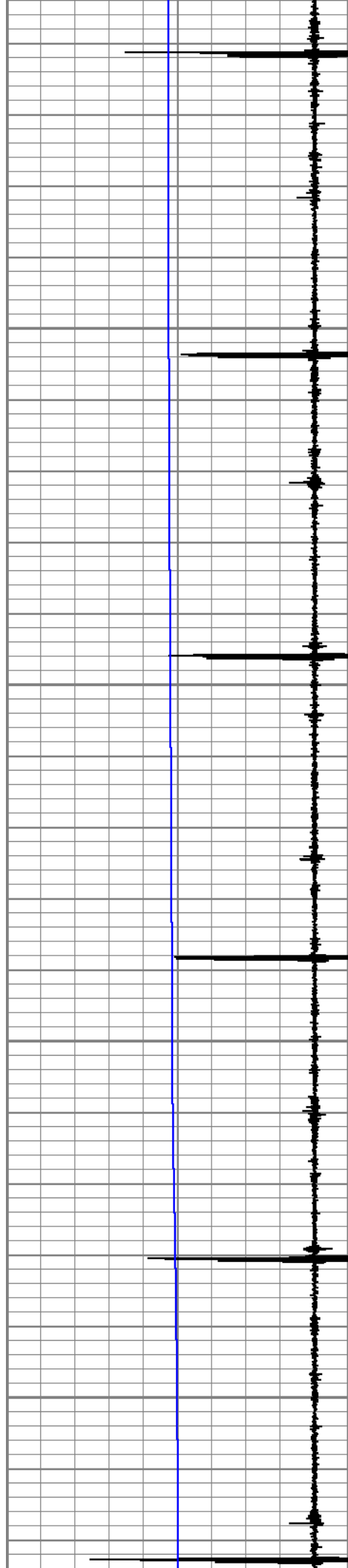
2200









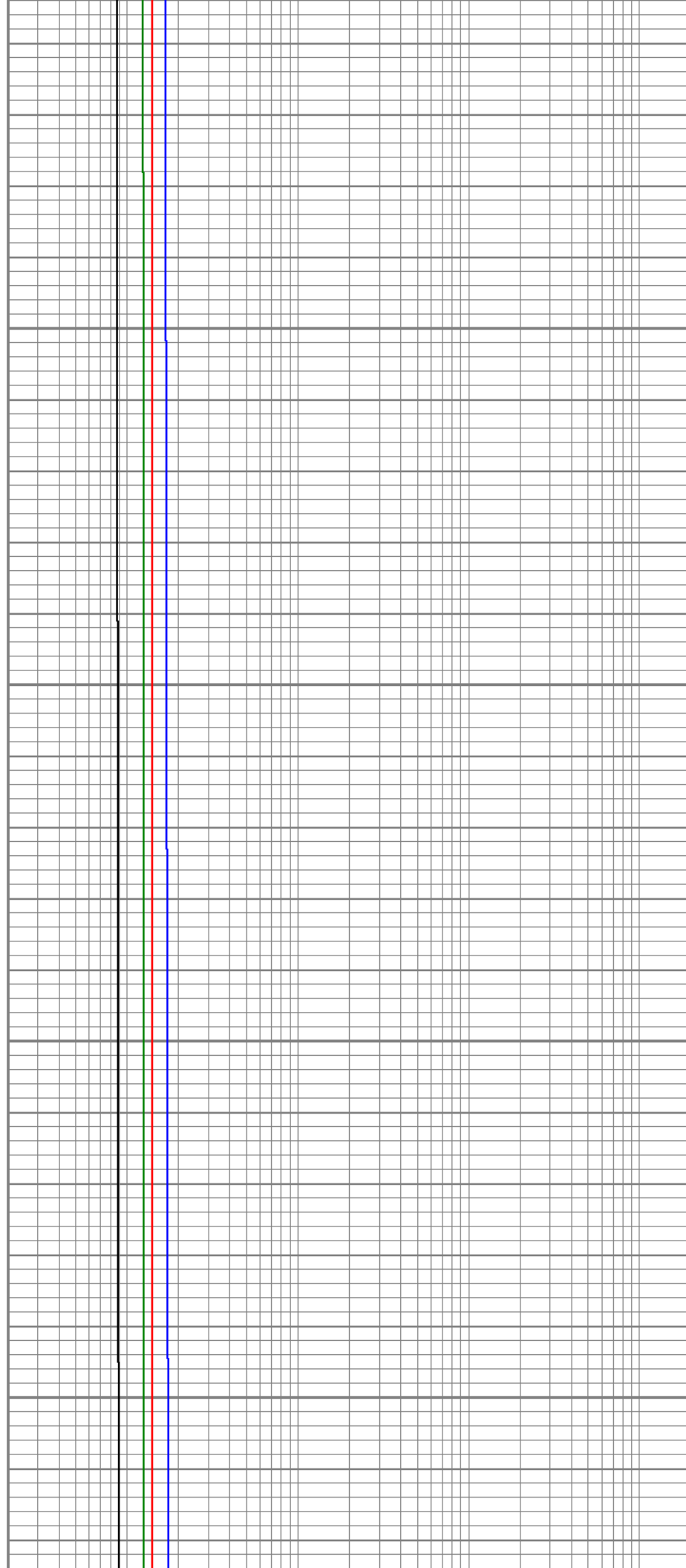


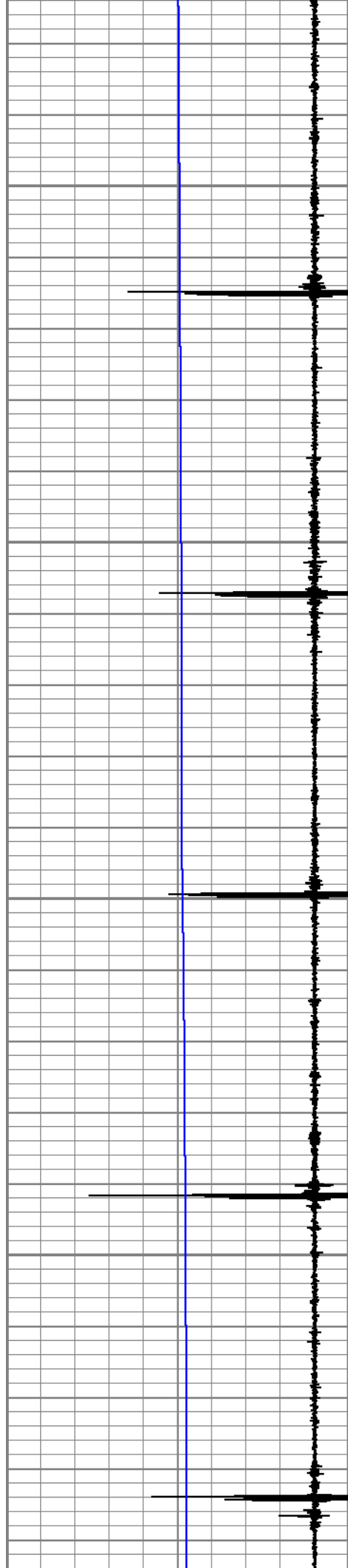
2950

3000

3050

3100



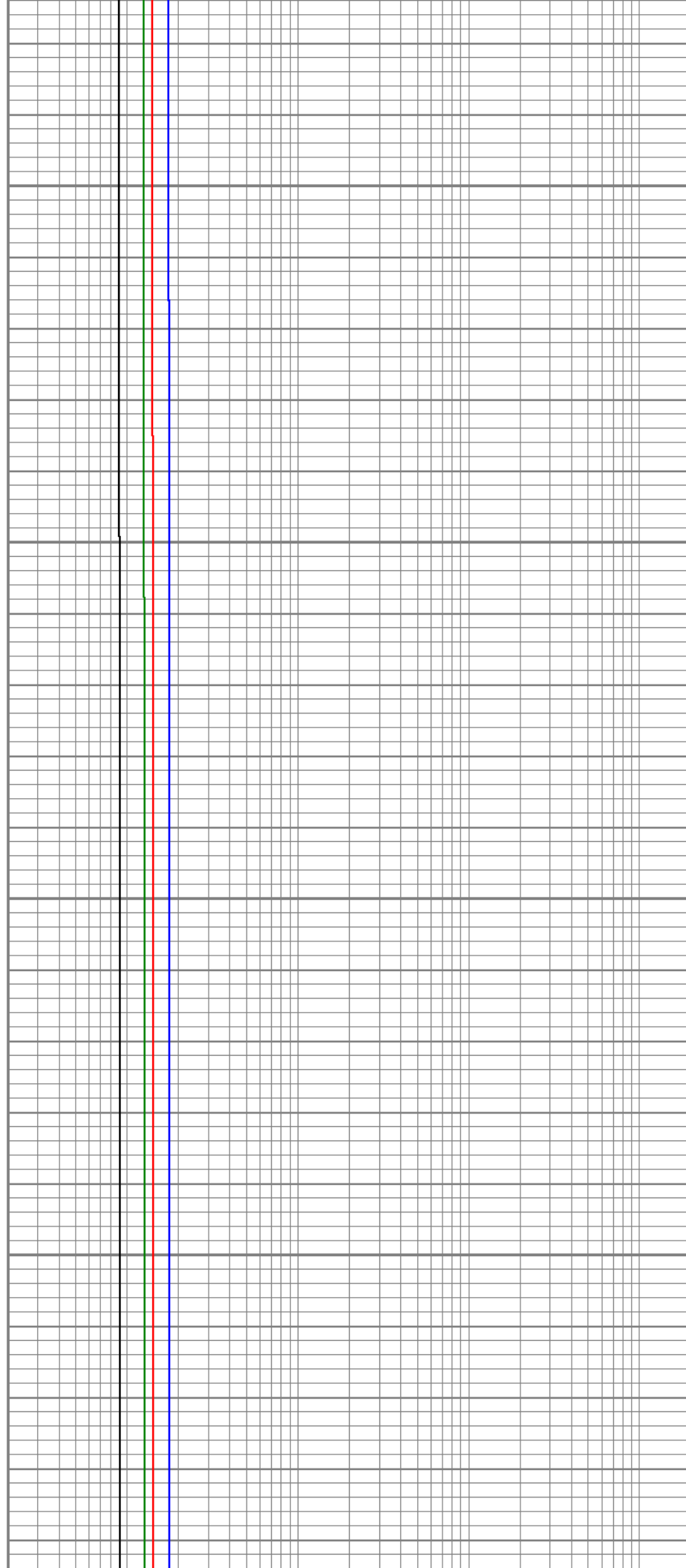


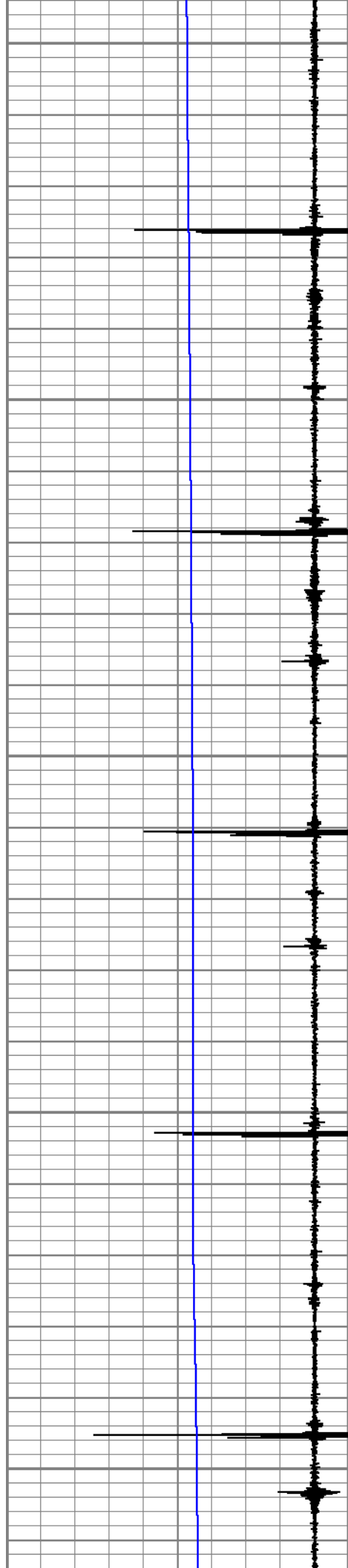
3150

3200

3250

3300





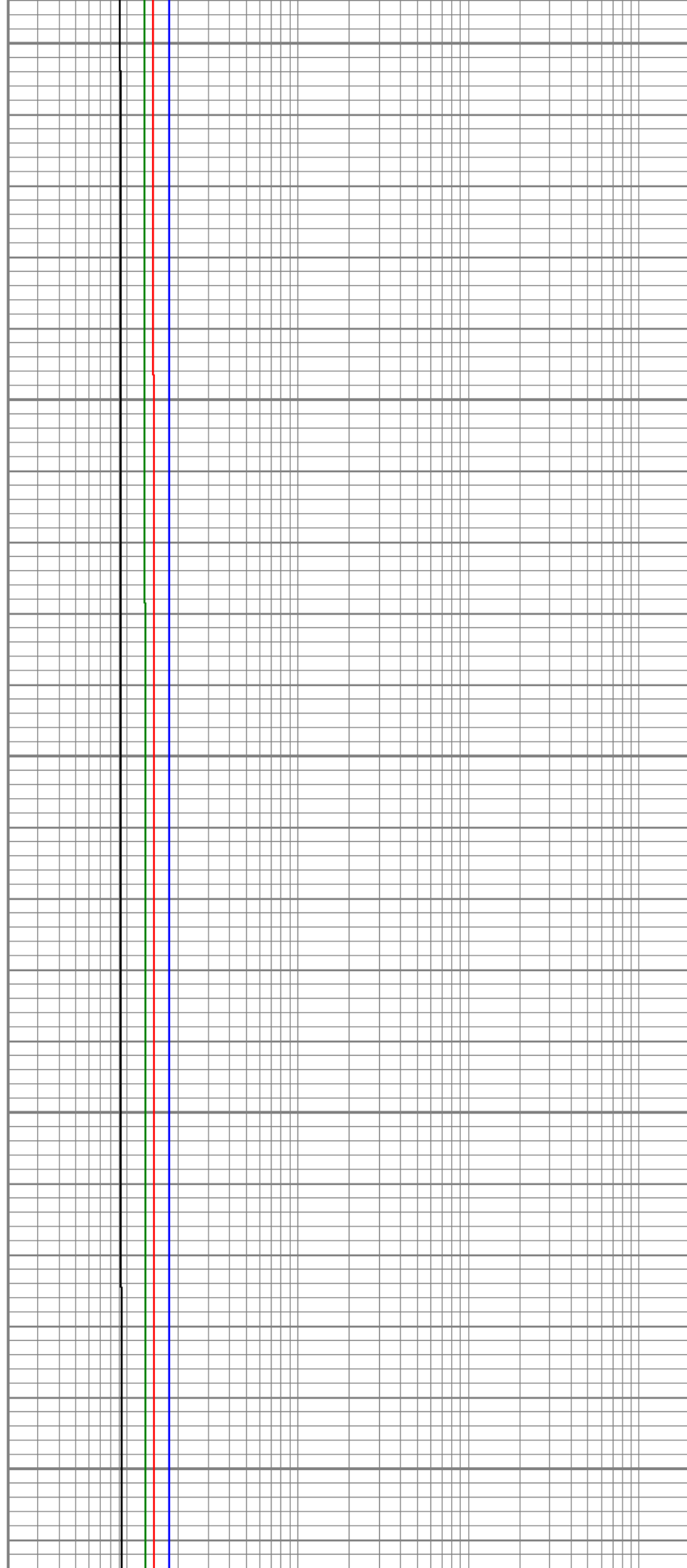
3350

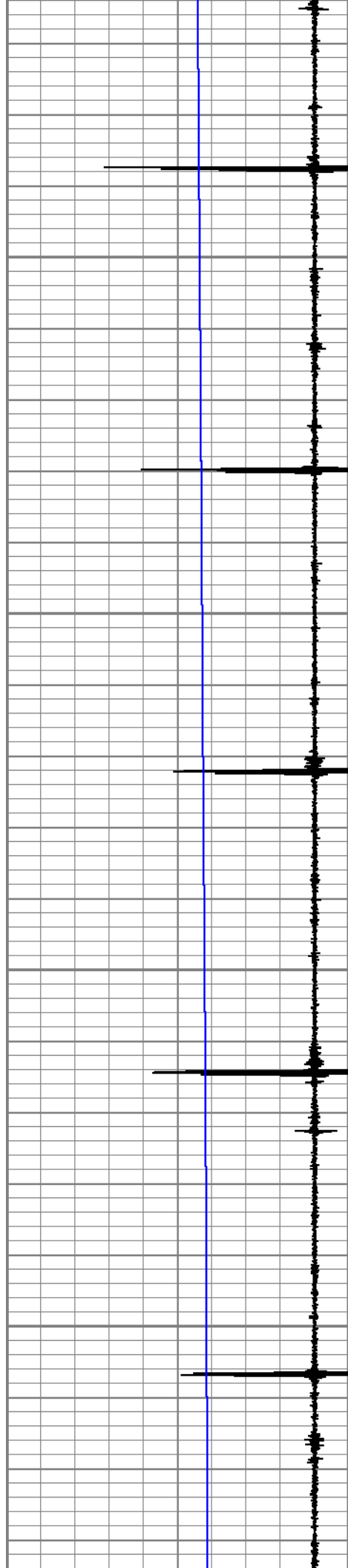
3400

3450

3500

3550



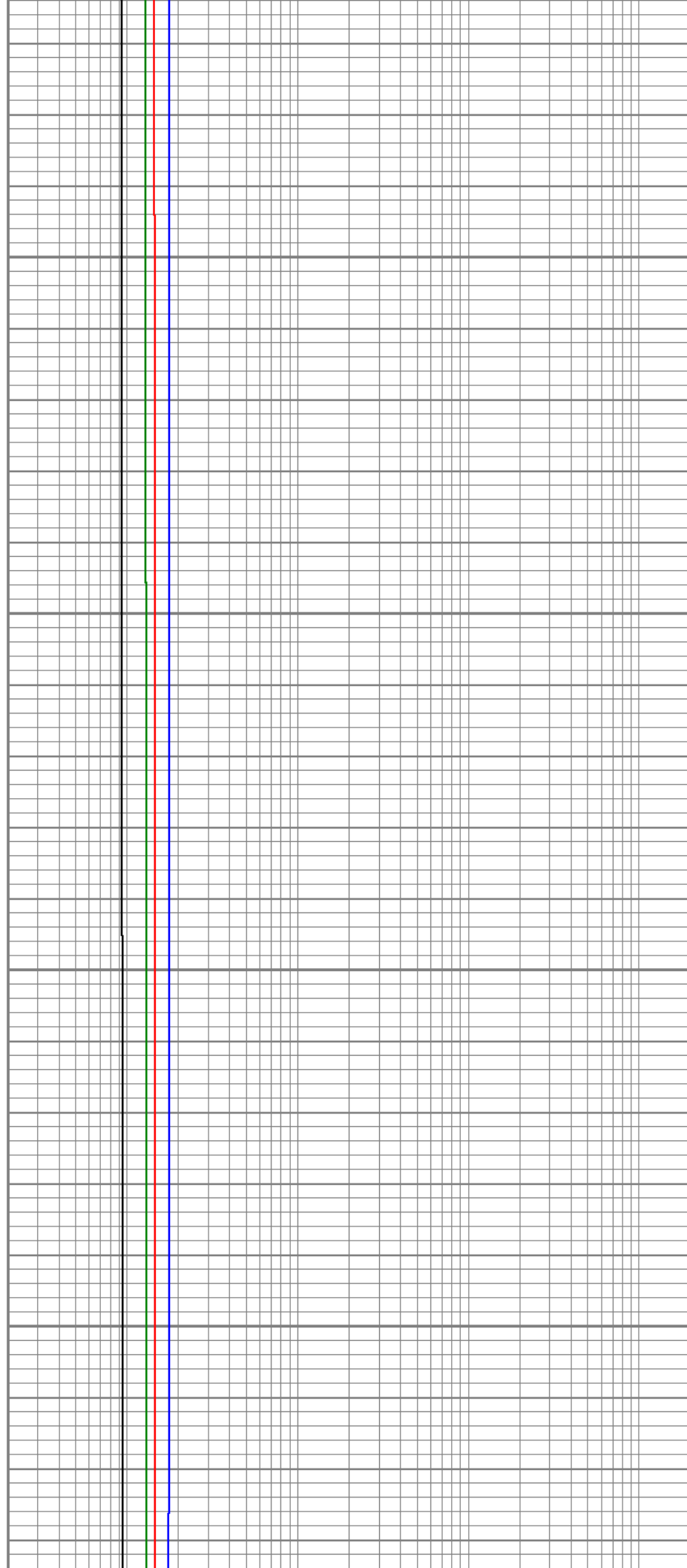


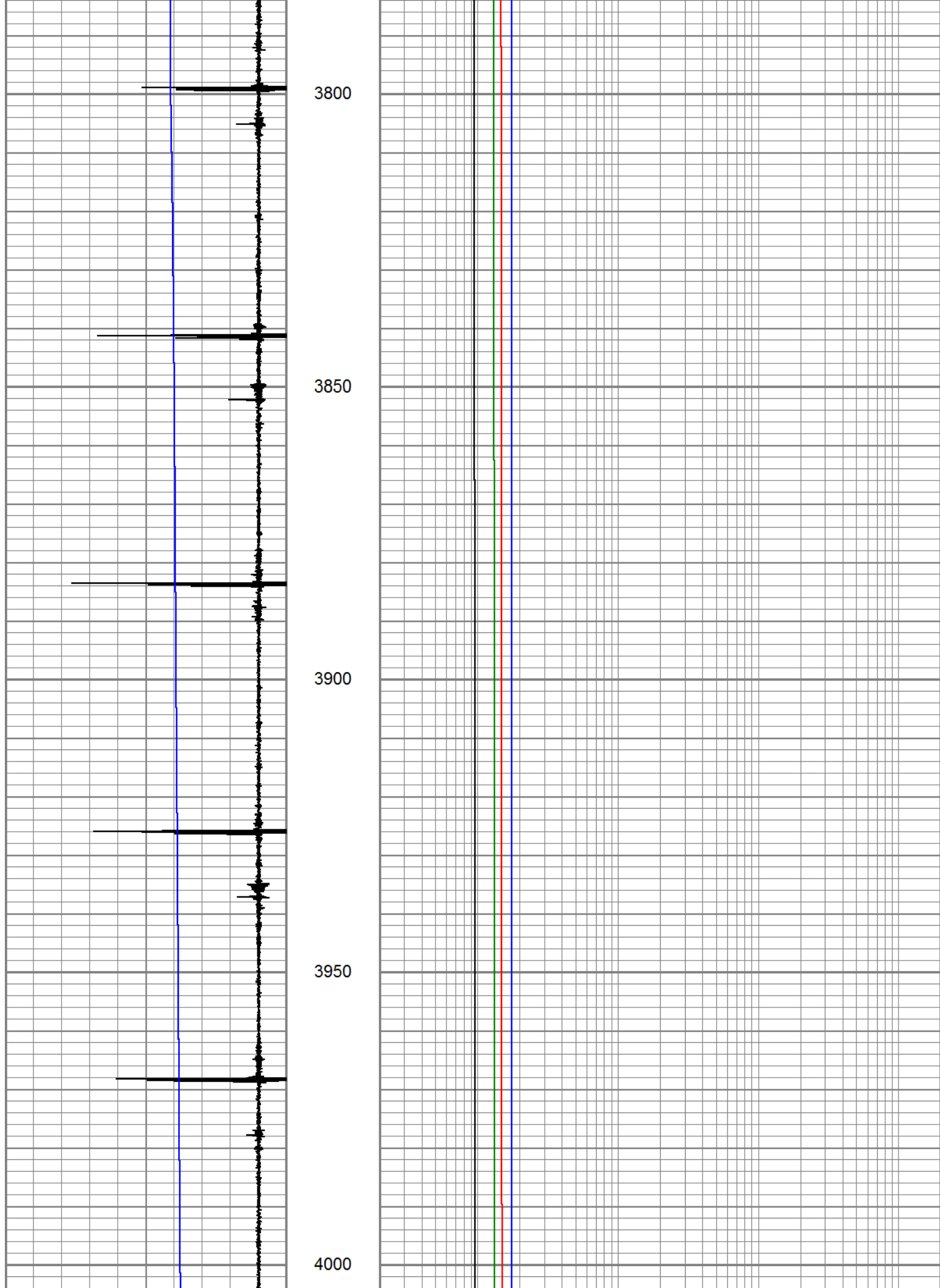
3600

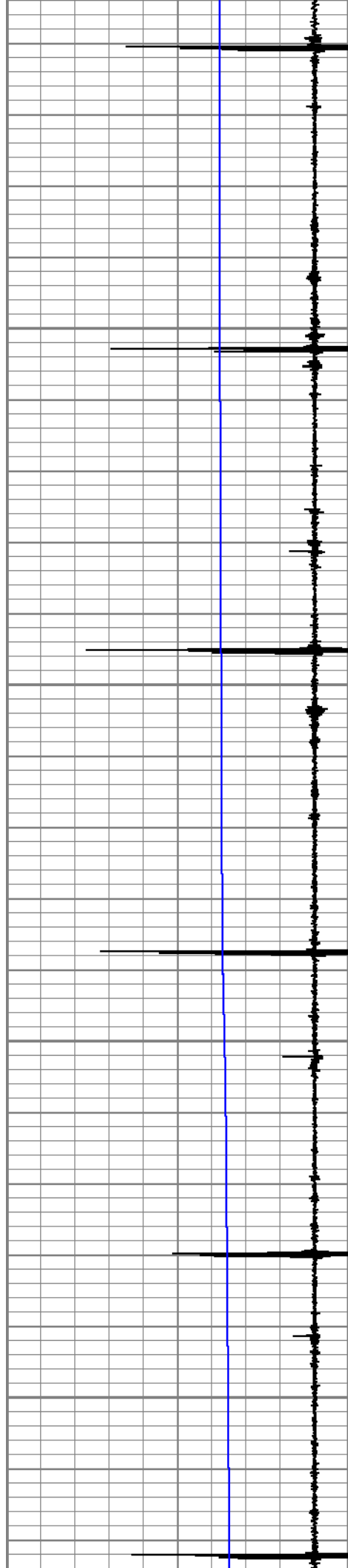
3650

3700

3750





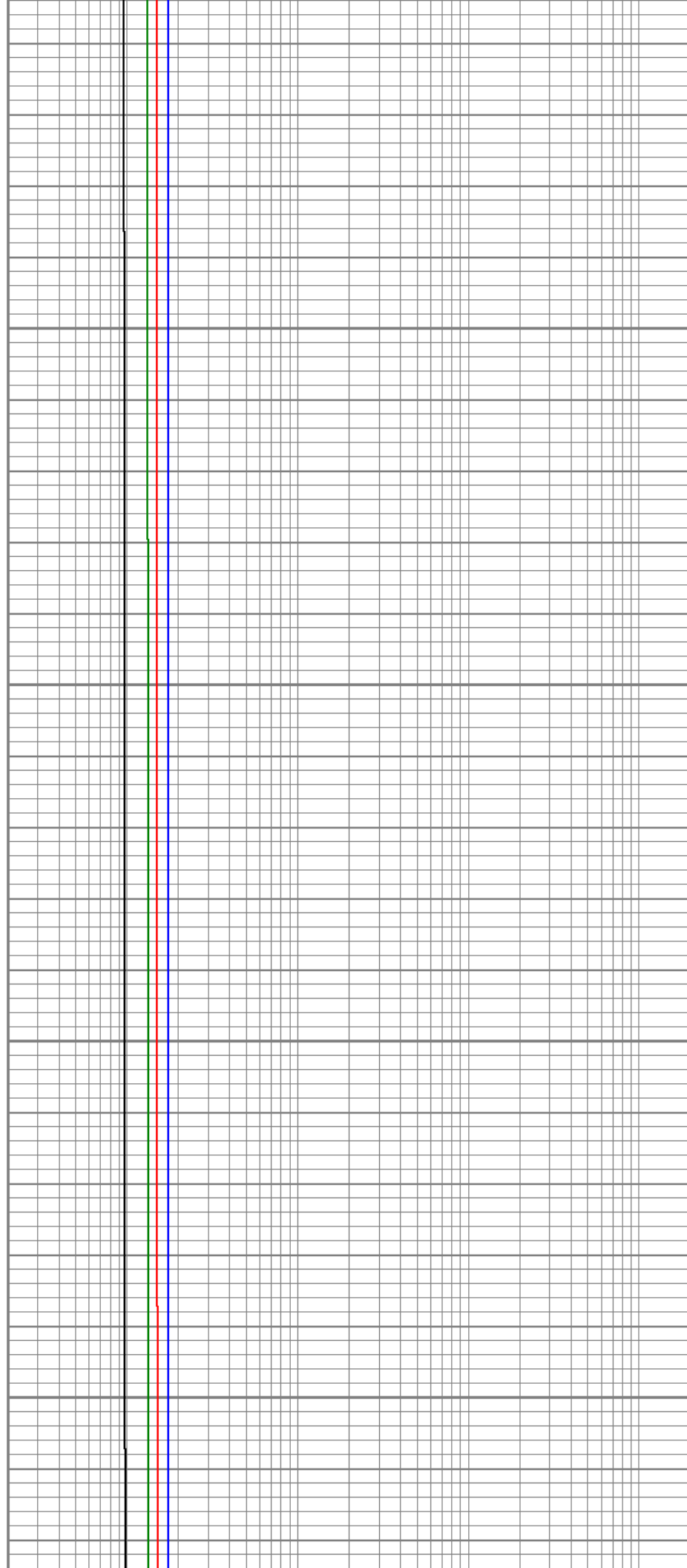


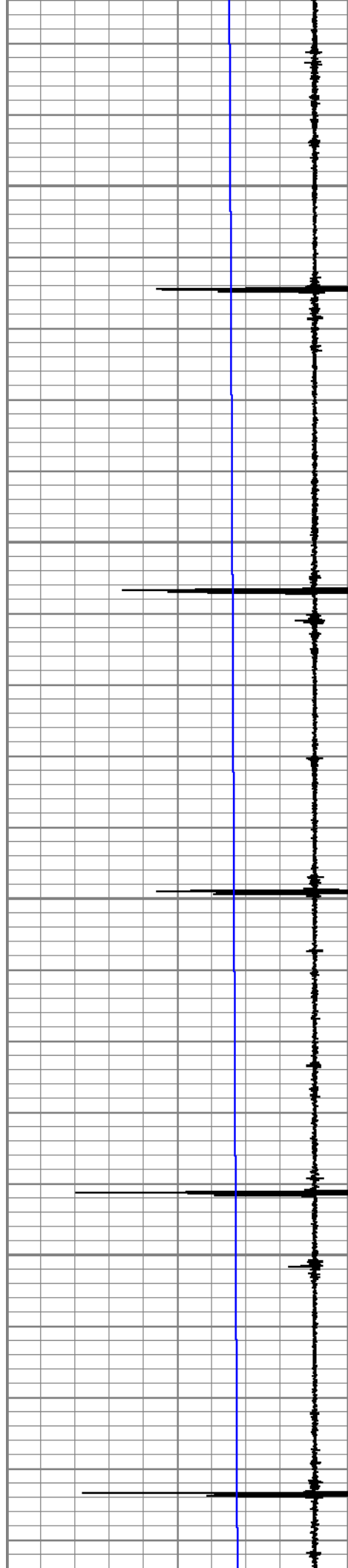
4050

4100

4150

4200



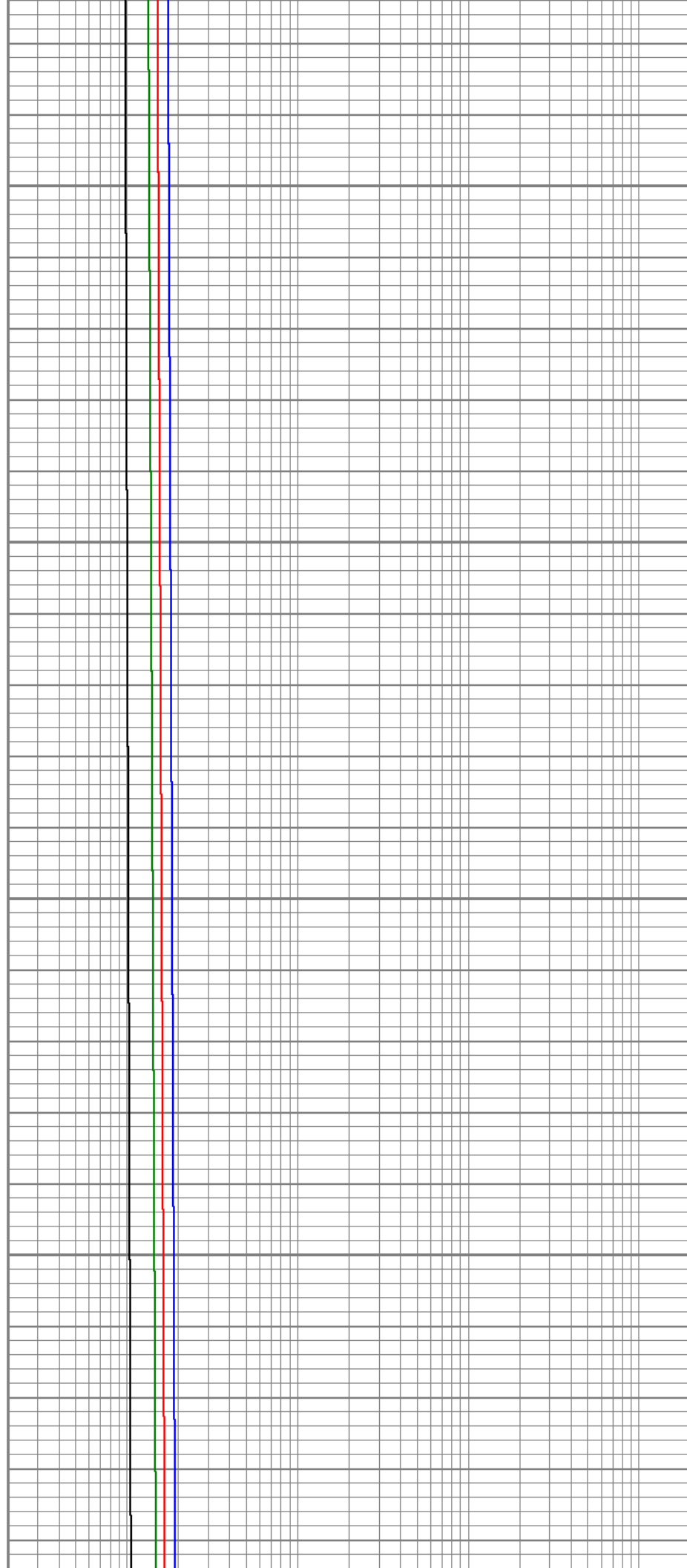


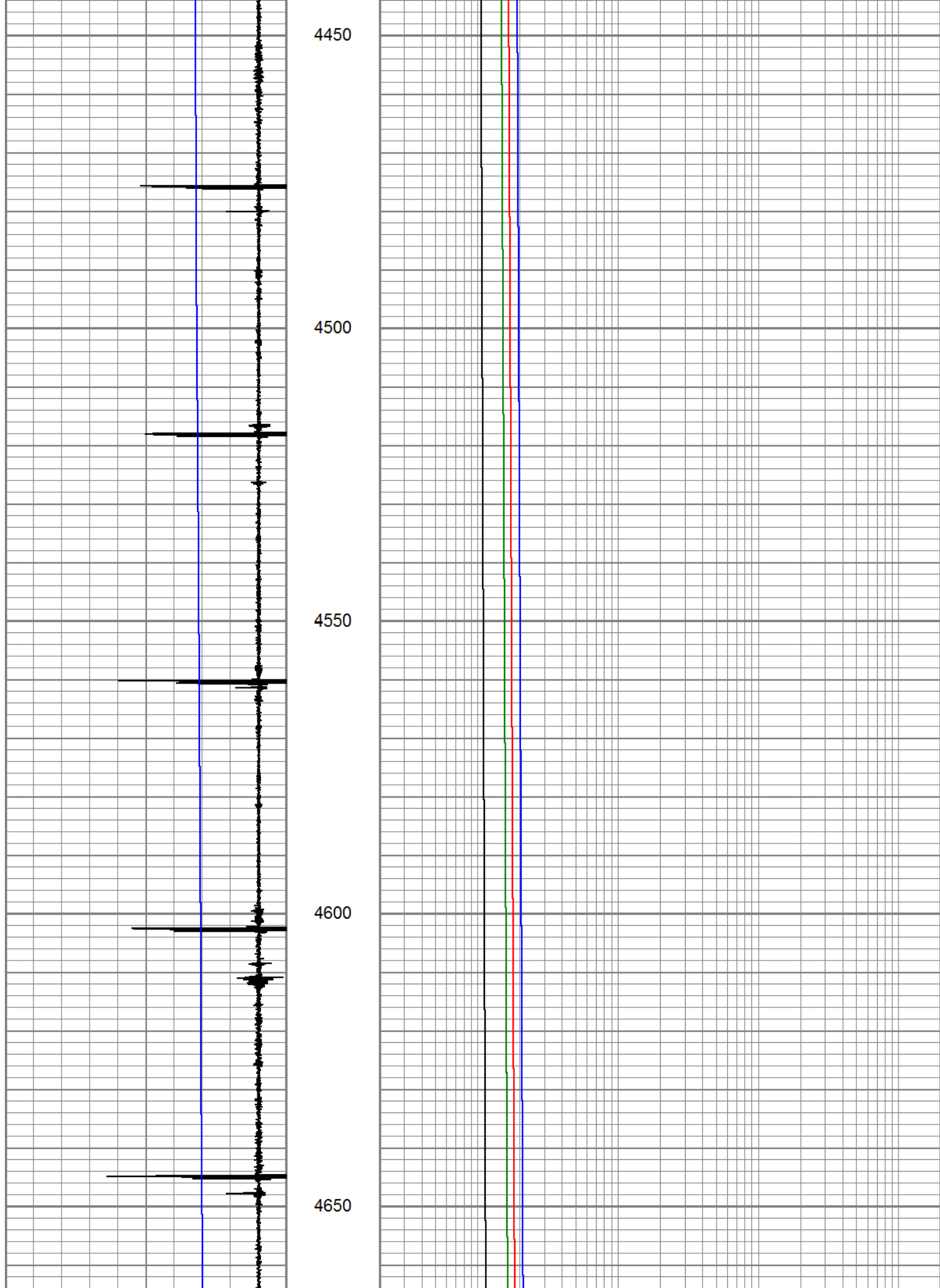
4250

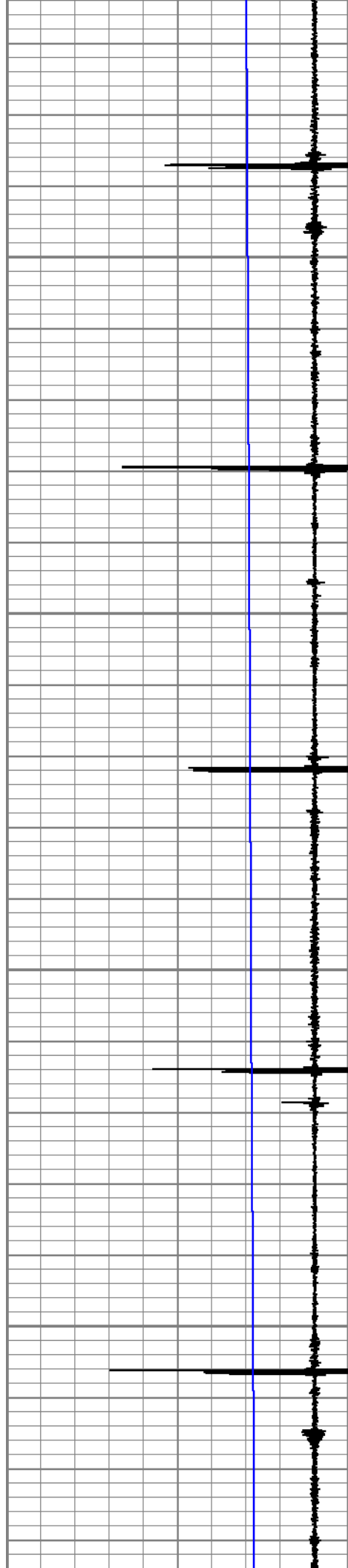
4300

4350

4400





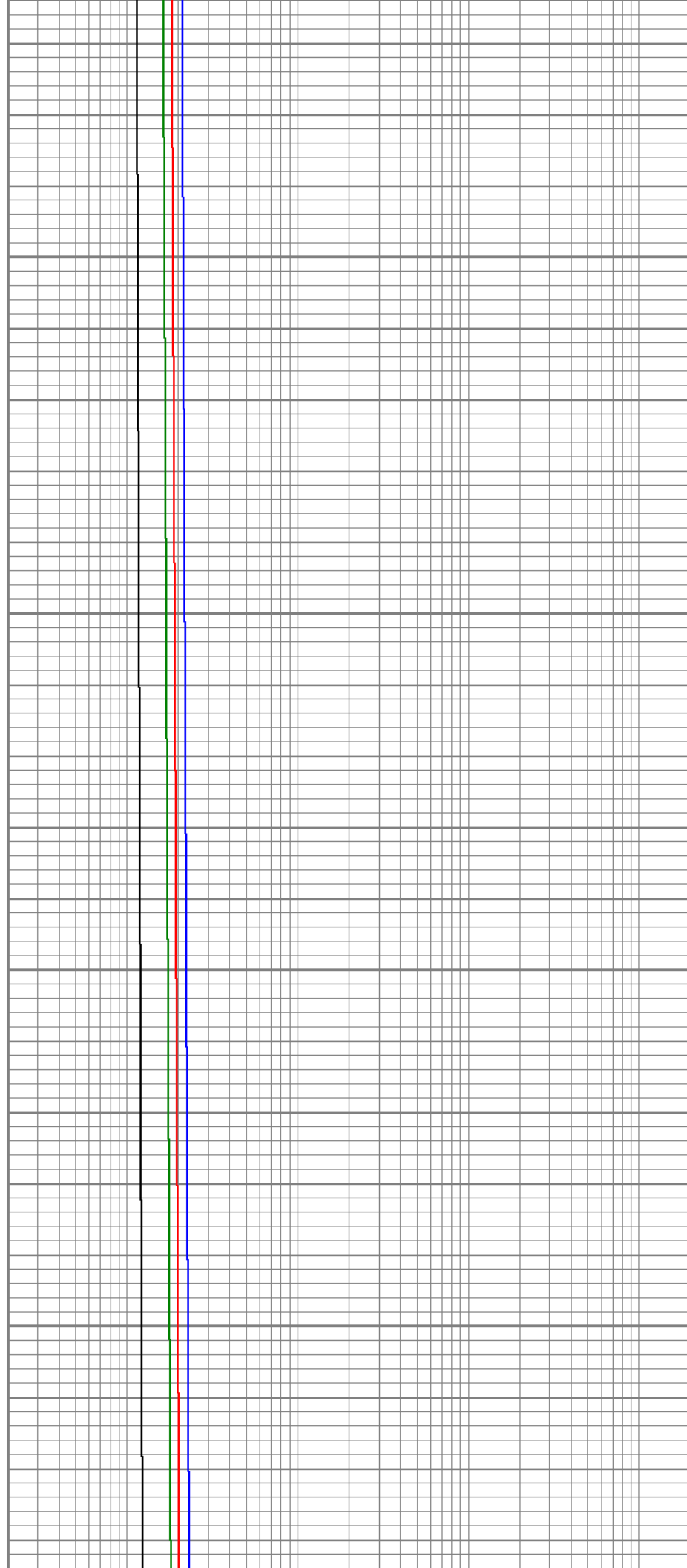


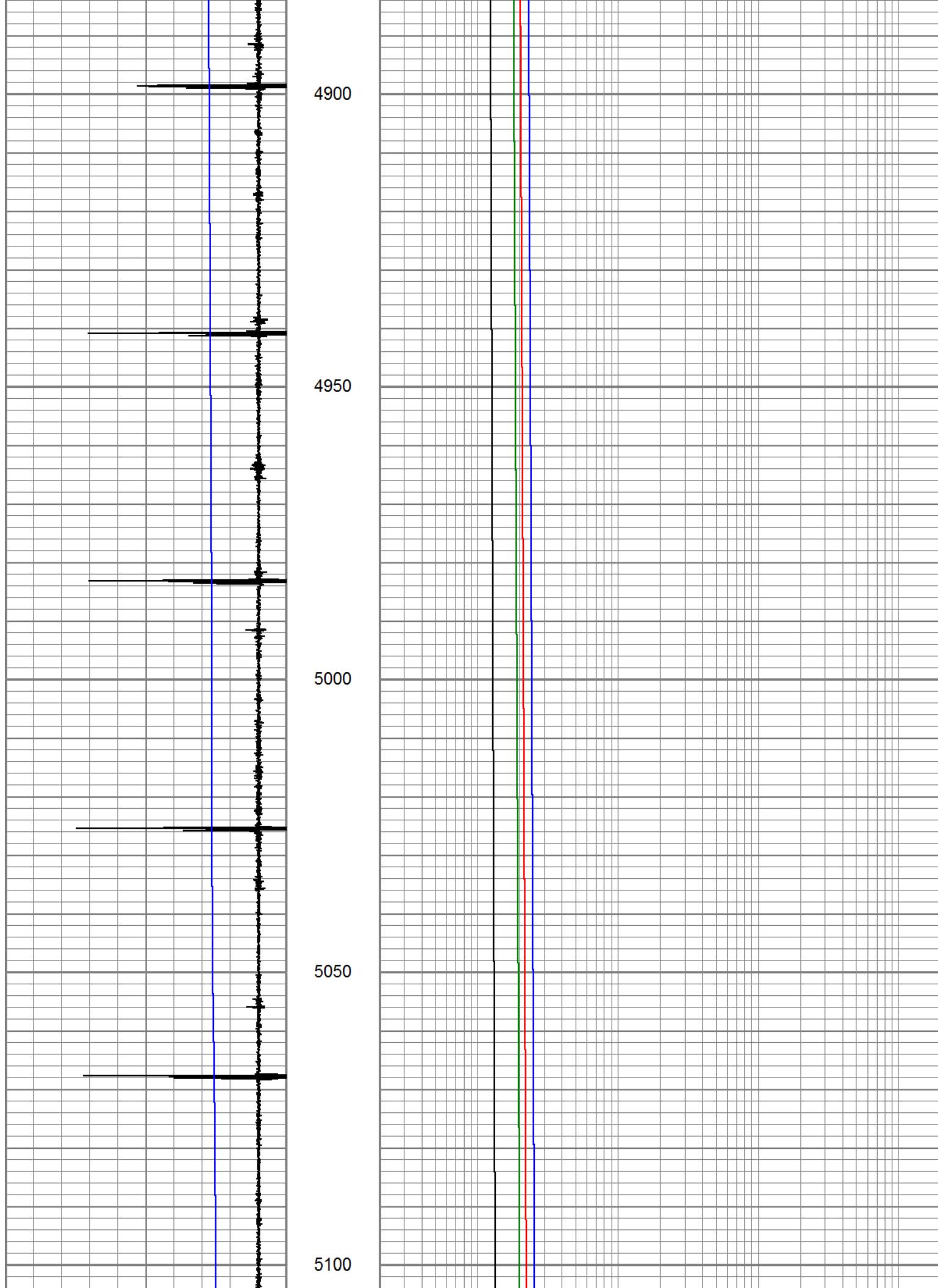
4700

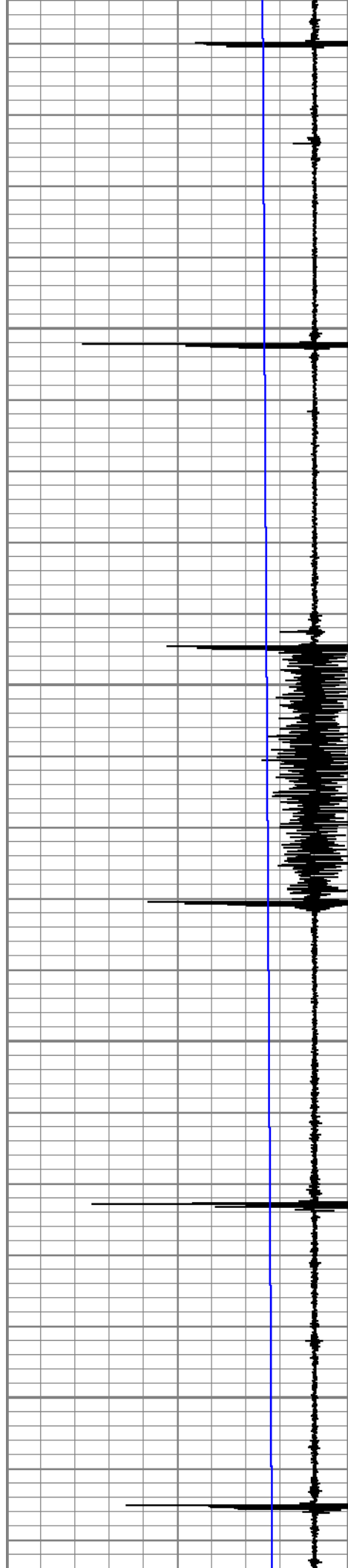
4750

4800

4850





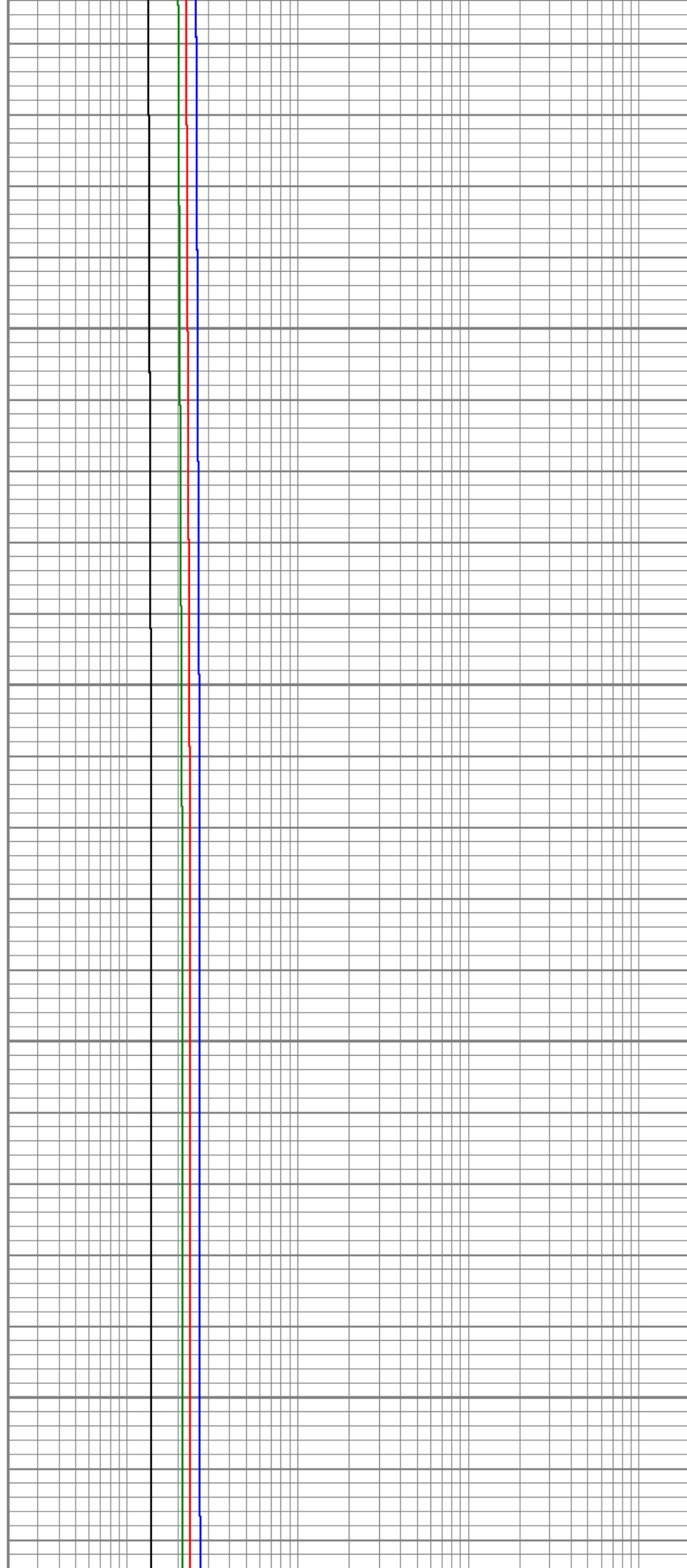


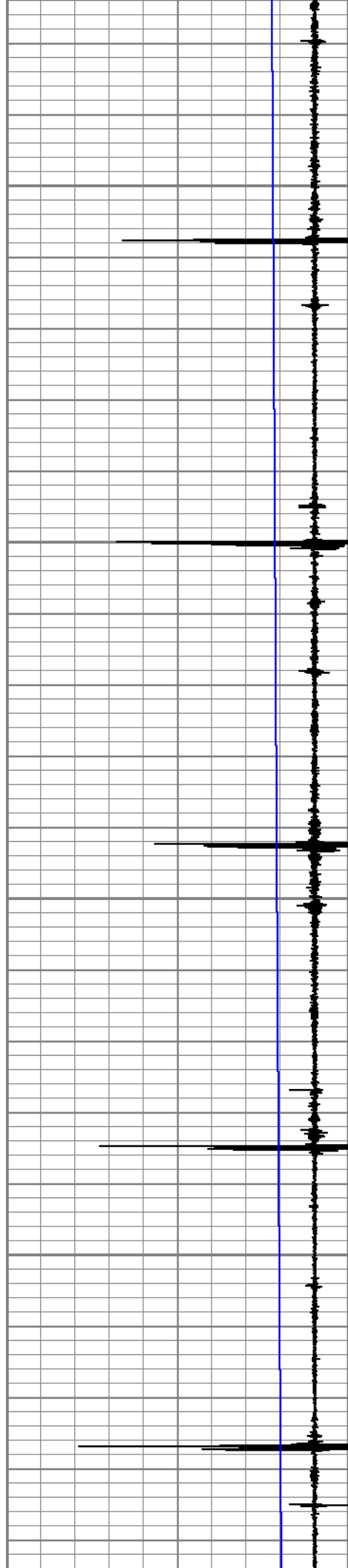
5150

5200

5250

5300



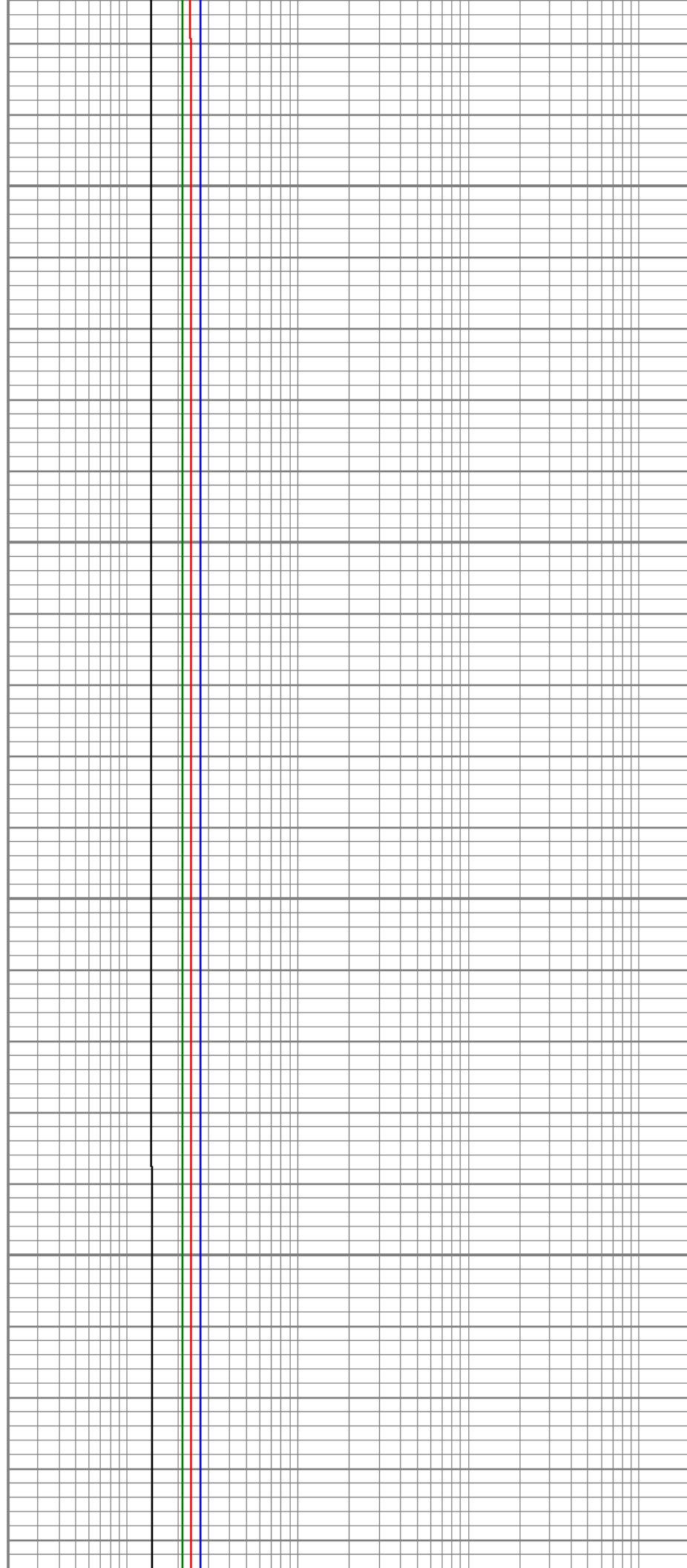


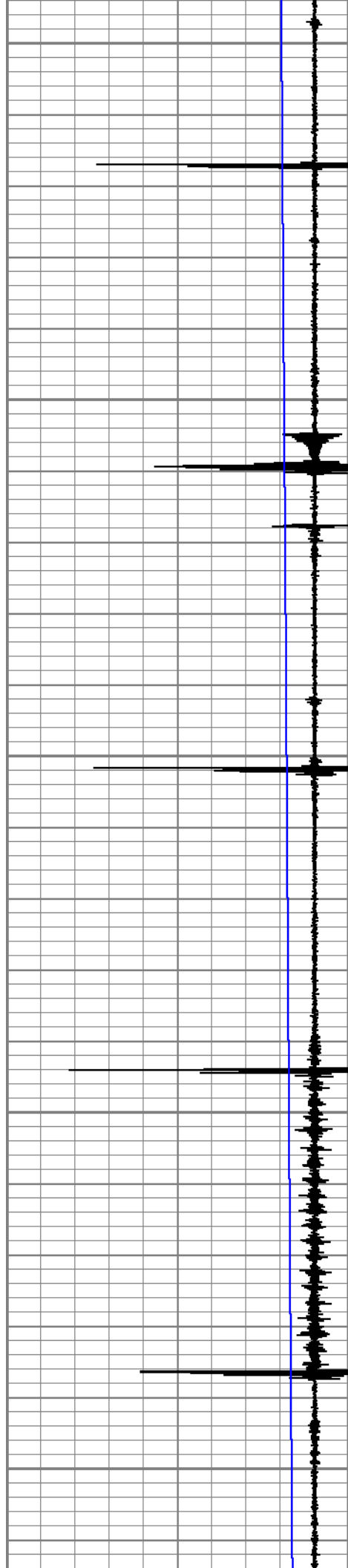
5350

5400

5450

5500





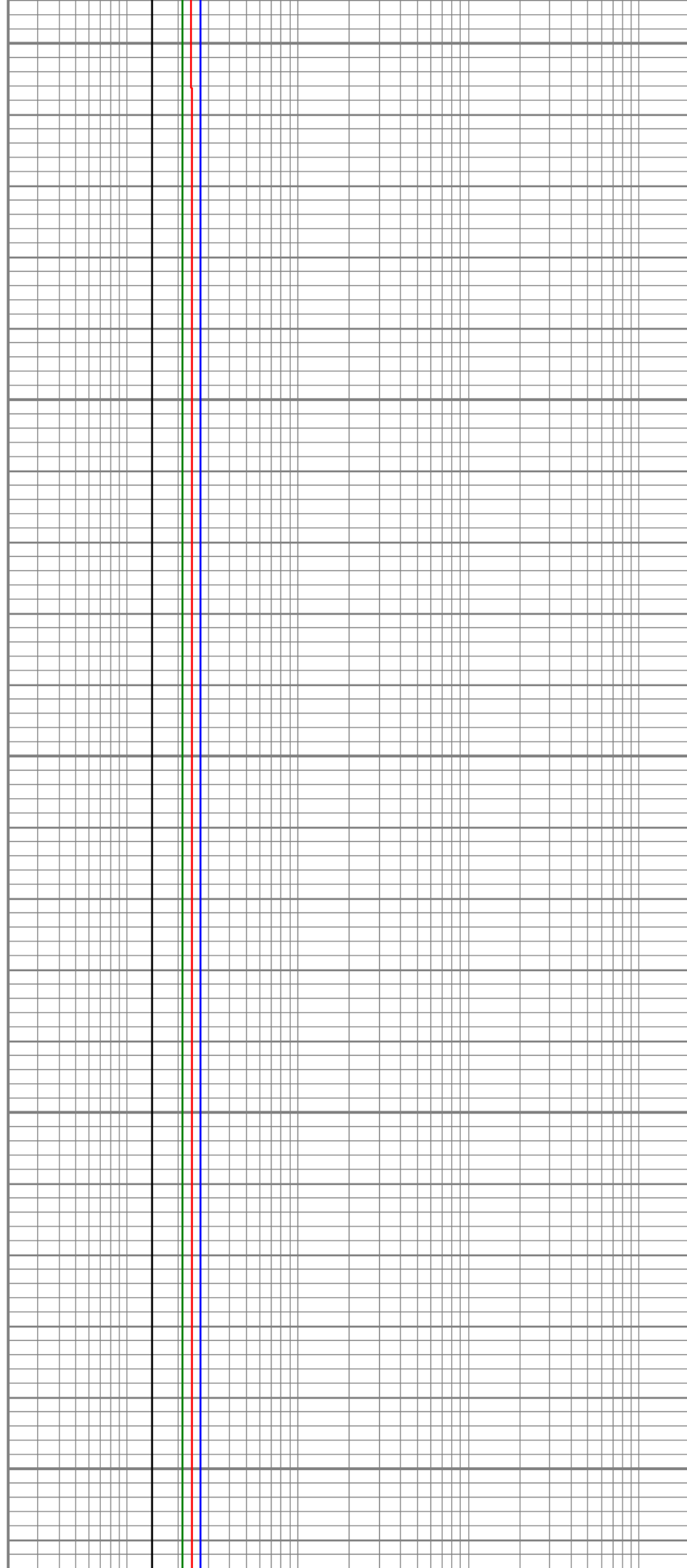
5550

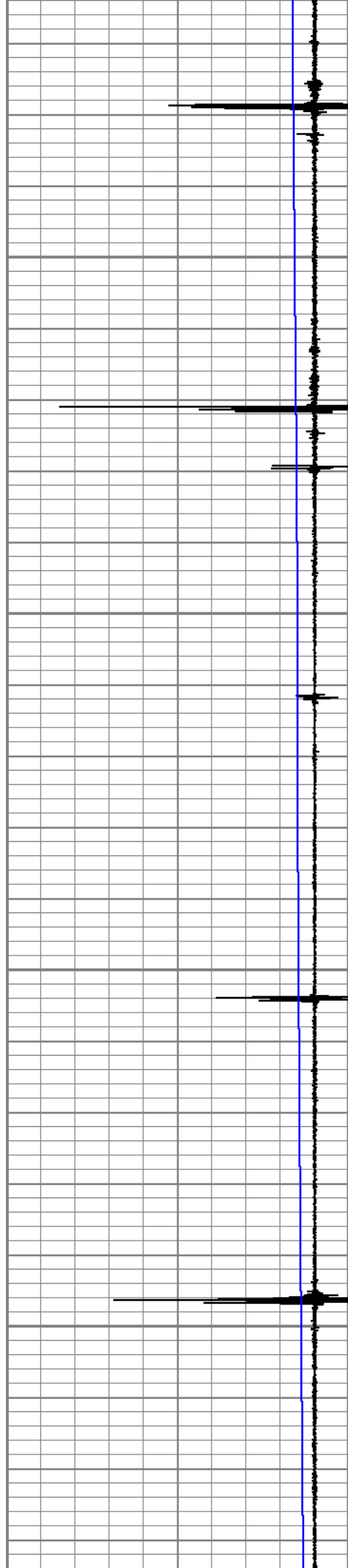
5600

5650

5700

5750





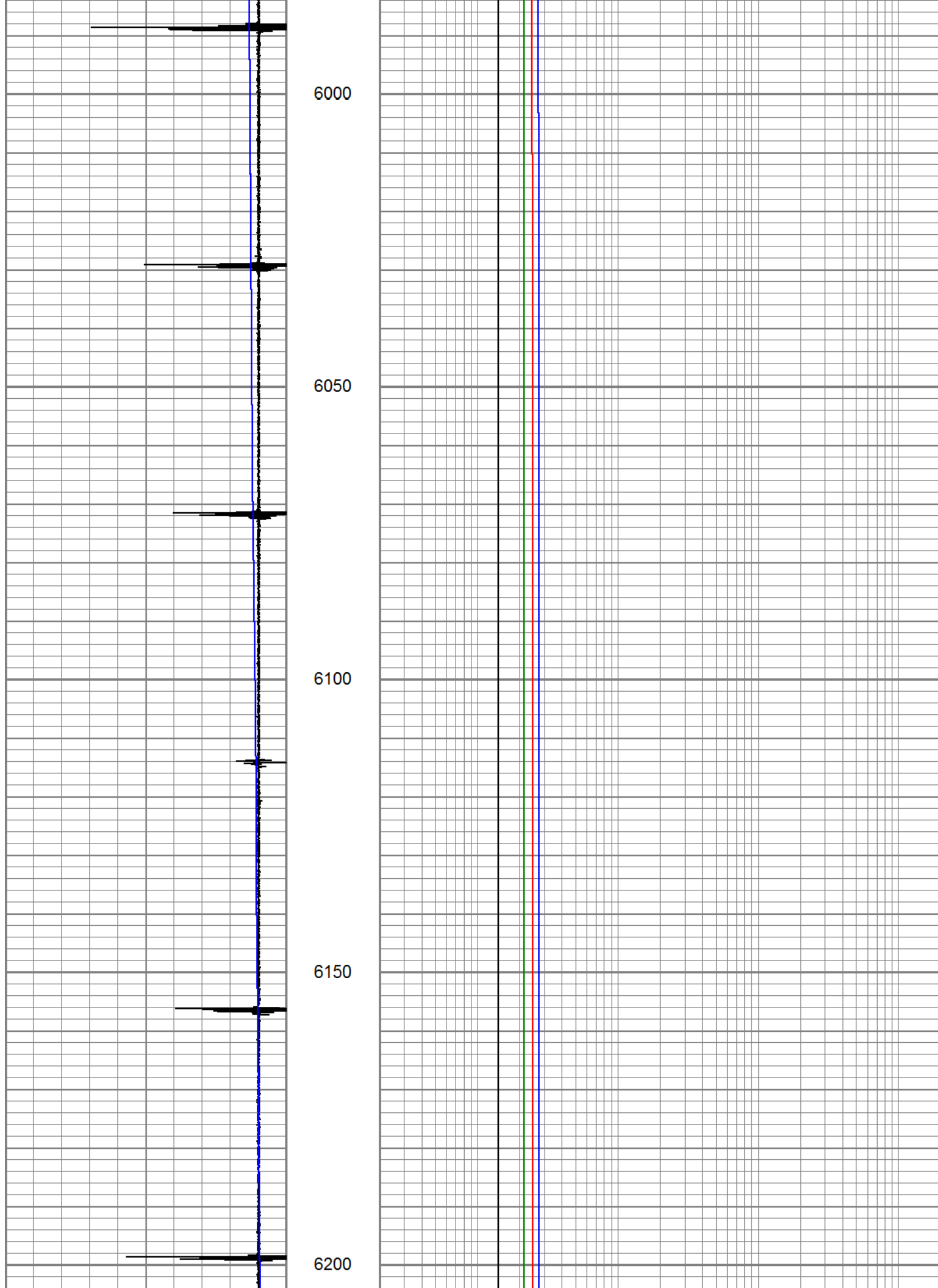
5800

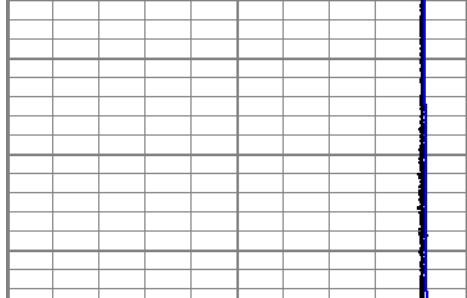
5850

5900

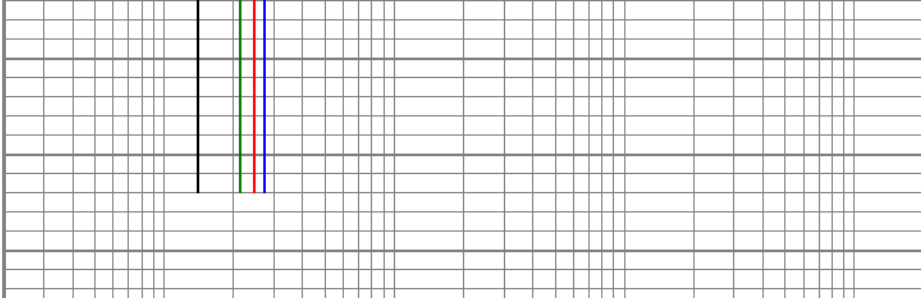
5950








-9	CCL	1
25	TEMP (degF)	225



2	2000HZ (mV)	20000
2	1000HZ (mV)	20000
2	600HZ (mV)	20000
2	200HZ (mV)	20000

	<table><tr><td>Company</td><td>K.P. KAUFMANN</td></tr><tr><td>Well</td><td>MAUL 20-2</td></tr><tr><td>Field</td><td>WATTENBERG</td></tr><tr><td>County</td><td>WELD</td></tr><tr><td>State</td><td>COLORADO</td></tr></table>	Company	K.P. KAUFMANN	Well	MAUL 20-2	Field	WATTENBERG	County	WELD	State	COLORADO
Company	K.P. KAUFMANN										
Well	MAUL 20-2										
Field	WATTENBERG										
County	WELD										
State	COLORADO										