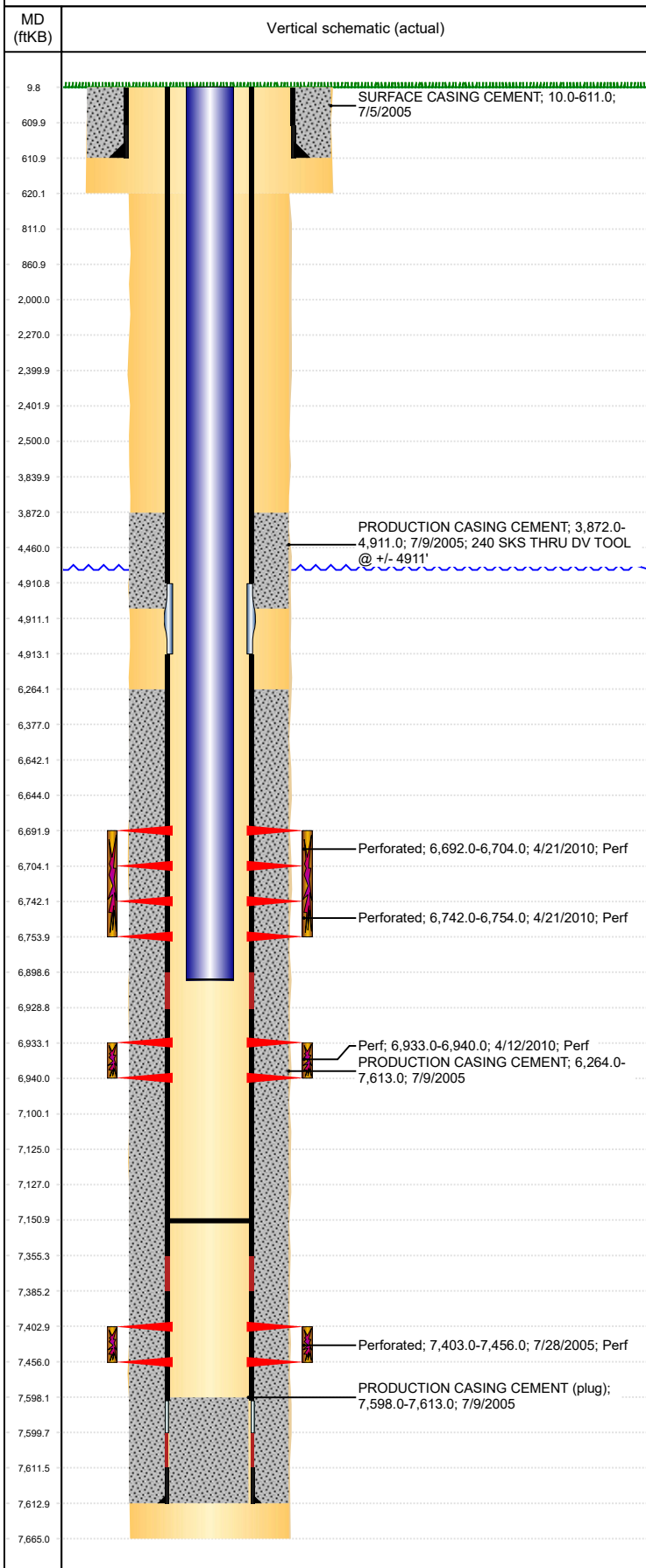


Well Name: DIGGIN STATE D16-19J

VERTICAL - ORIGINAL HOLE, 10/26/2018 10:50:55 AM



| Well Header | | | | | | | | | |
|---|-------------|---------------------------|------------|--|--------------------|------------------------------|------------------------------------|---------------------------------------|------------|
| API 05-123-23048 | | Business Unit DJ BASIN | | | District 15 | | Well Config VERTICAL | | |
| KB - GL / MSL (ft... 10.00 | | Spud Date 7/4/2005 | | P & A Date | | Well Production Status PR | | | SoRT No |
| Comment DV TOOL @ +/- 4911'. 7/30/10 CLEAN OUT TO 7151', BELOW PLUG @ 7150'. | | | | | | | | | |
| Surface Location (Congressional) | | | | | | | | | |
| Qtr 3 SW | Qtr 4 NW | Section 16 | Twنشp 3 | Twنش... N | Range 64 | Rng E/... W | Actual Latitude (°) 40.22893769 | Actual Longitude (°) -104.56098893 | |
| Wellbore Sections | | | | | | | | | |
| Section Des | | Size (in) | | | Act Top, MD (ftKB) | | Act Btm, MD (ftKB) | | |
| SURFACE | | 12 1/4 | | | 10 | | 620 | | |
| PRODUCTION | | 7 7/8 | | | 620 | | 7,665 | | |
| Casing Strings | | | | | | | | | |
| Csg Des | | Run Date | | OD (in) | Wt/Len (lb/ft) | Grade | Top, MD (ftKB) | MD (ftKB) | |
| Surface | | 7/5/2005 | | 8 5/8 | 24.00 | K-55 | 10.0 | 611.0 | |
| Production | | 7/9/2005 | | 4 1/2 | 11.60 | M-80 | 9.9 | 7,613.0 | |
| Cement | | | | | | | | | |
| Des | | | | Start Date | | Top (ftKB) | | Btm (ftKB) | |
| SURFACE CASING CEMENT | | | | 7/5/2005 | | 10.0 | | 611.0 | |
| PRODUCTION CASING CEMENT | | | | 7/9/2005 | | 3,872.0 | | 4,911.0 | |
| PRODUCTION CASING CEMENT | | | | 7/9/2005 | | 6,264.0 | | 7,613.0 | |
| Zone Statuses | | | | | | | | | |
| Zone Name | | Status Date | | Status | Fluid Type | Job | | Prod Method | |
| J SAND | | 2/9/2017 | | SI | Water | RECOMPLETION, 4/8/2010 07:00 | | Flowing | |
| J SAND | | 3/5/2017 | | PR | | | | | |
| CODELL | | 2/9/2017 | | SI | | | | | |
| CODELL | | 3/5/2017 | | PR | | | | | |
| NIOBRARA | | 4/27/2010 | | PR | | | | | |
| NIOBRARA | | 4/27/2010 | | PR | | | | | |
| Perforation Data | | | | | | | | | |
| Linked Zone | | Bnch/Stg | | Entered Shot Total | Top (ftKB) | | Btm (ftKB) | | Date |
| NIOBRARA, ORIGINAL HOLE | | A | | 24 | 6,692.00 | | 6,704.00 | | 4/21/2010 |
| NIOBRARA, ORIGINAL HOLE | | B | | 24 | 6,742.00 | | 6,754.00 | | 4/21/2010 |
| CODELL, ORIGINAL HOLE | | | | 24 | 6,933.00 | | 6,940.00 | | 4/12/2010 |
| J SAND, ORIGINAL HOLE | | | | 108 | 7,403.00 | | 7,456.00 | | 7/28/2005 |
| Stimulation Intervals | | | | | | | | | |
| Zone | | | | Start Date | | Top (ftKB) | | Btm (ftKB) | |
| NIOBRARA, ORIGINAL HOLE | | | | 4/21/2010 | | 6,692.0 | | 6,754.0 | |
| CODELL, ORIGINAL HOLE | | | | 4/21/2010 | | 6,933.0 | | 6,940.0 | |
| J SAND, ORIGINAL HOLE | | | | 8/2/2005 | | 7,403.0 | | 7,456.0 | |
| Other In Hole | | | | | | | | | |
| Run Date | | Des | | | | OD (in) | Top (ftKB) | | Btm (ftKB) |
| | | | | | | | | | |
| Logs | | | | | | | | | |
| Date | | Type | | | | Top, MD (ftKB) | | Btm, MD (ftKB) | |
| 7/8/2005 | | COMPENSATED DENSITY | | | | 4,000.0 | | 7,597.0 | |
| 7/8/2005 | | INDUCTION | | | | 611.0 | | 7,617.0 | |
| 7/27/2005 | | CBL/CCL/GR | | | | 3,700.0 | | 7,585.0 | |
| 9/4/2018 | | GYRO | | | | 10.0 | | 6,800.0 | |
| Plug Back Total Depths | | | | | | | | | |
| Date | | Type | | Com | | | | Depth (ftKB) | |
| 4/9/2010 | | FILL | | BAIL TO THIS POINT. 91' OF RAT HOLE BELOW THE "J" SAND | | | | 7,547.0 | |
| 7/30/2010 | | PLUG | | TAG PLUG BETWEEN CODELL AND J SAND | | | | 7,151.0 | |
| | | | | | | | | | |