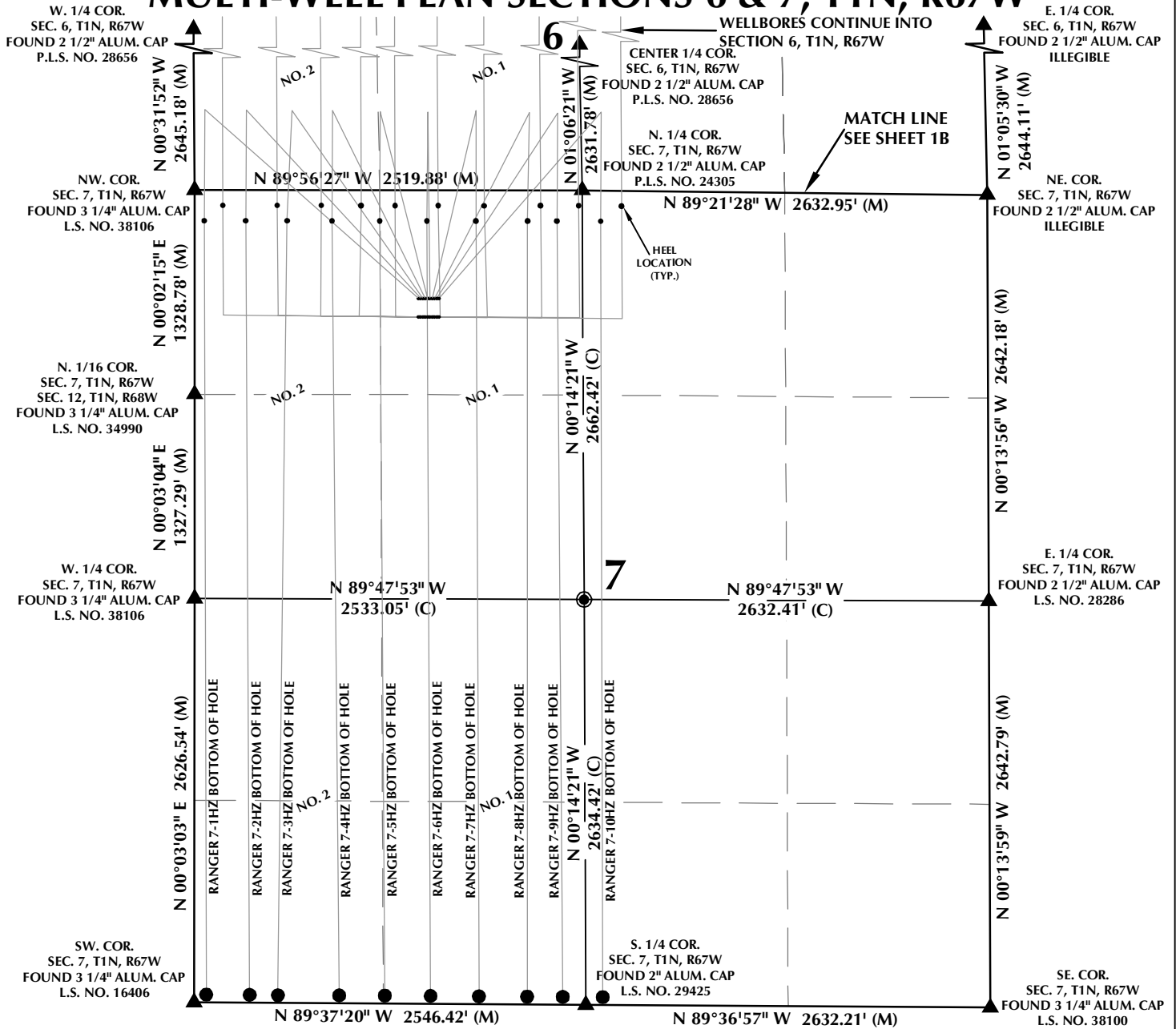


MULTI-WELL PLAN SECTIONS 6 & 7, T1N, R67W



NOTES:

1. ▲ INDICATES SECTION CORNER.
2. ● INDICATES CALCULATED CORNER.
3. BASIS OF BEARING DERIVED FROM COLORADO COORDINATE SYSTEM OF 1983 NORTH ZONE.
4. ALL MEASURED DISTANCES ARE GRID.
5. COMBINED SCALE FACTOR: .99972179 CALCULATED FROM THE SW. CORNER OF SECTION 6, T1N, R67W.
6. WELL FOOTAGES ARE MEASURED AT RIGHT ANGLES TO THE SECTION LINES.
7. NO. 1 & NO. 2 AS SHOWN HEREON ARE GOVERNMENT LOTS 1 & 2 PER THE ORIGINAL GLO SURVEY.

WELL PAD - RANGER 18-7HZ

MULTI-WELL PLAN
RANGER 7-1HZ, RANGER 7-2HZ,
RANGER 7-3HZ, RANGER 7-4HZ, RANGER 7-5HZ,
RANGER 7-6HZ, RANGER 7-7HZ, RANGER 7-8HZ,
RANGER 7-9HZ, RANGER 7-10HZ, RANGER 7-11HZ,
RANGER 7-12HZ, RANGER 7-13HZ, RANGER 7-14HZ,
RANGER 7-15HZ, RANGER 7-16HZ, RANGER 7-17HZ,
RANGER 7-18HZ, RANGER 7-19HZ & RANGER 7-20HZ
LOCATED IN SECTIONS 6 & 7, T1N, R67W, 6TH P.M. &
LOCATED IN SECTION 31, T2N, R67W, 6TH P.M.
WELD COUNTY, COLORADO

**Kerr-McGee Oil &
Gas Onshore L.P.**
1099 18th Street
Denver, Colorado 80202



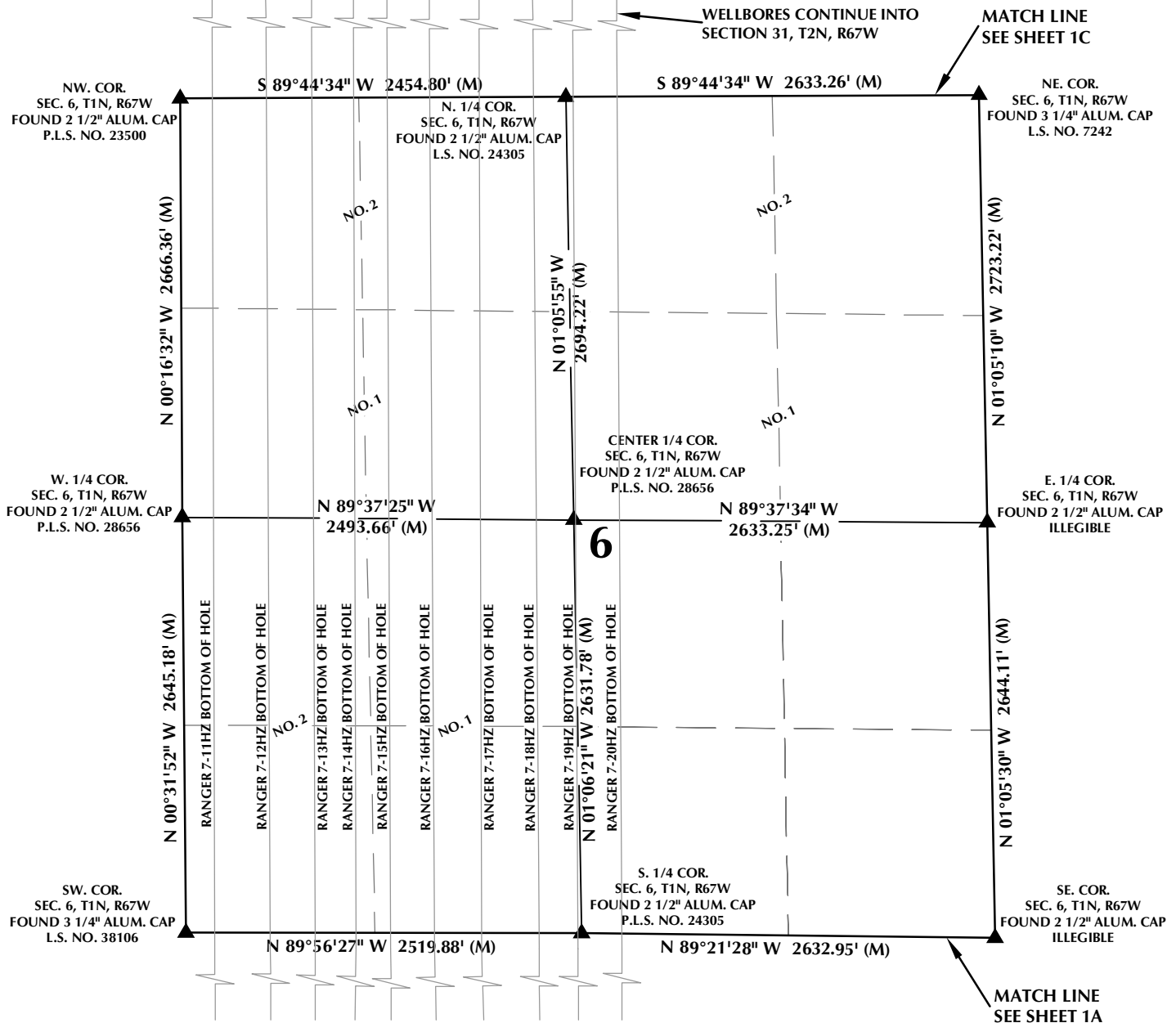
CONSULTING, LLC

SHERIDAN OFFICE
1095 Saberton Avenue
Sheridan, Wyoming 82801
Phone 307-674-0609

LOVELAND OFFICE
6706 North Franklin Avenue
Loveland, Colorado 80538
Phone 970-776-4331

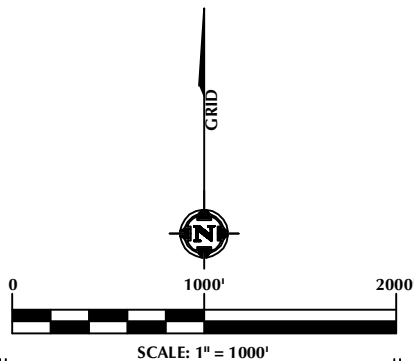
DRAFTED BY:	LMO	CHECKED BY:	RKF	SHEET NO:
DATE DRAFTED:	6/7/18	DATE SURVEYED:	5/7/18	1A
REVISED:		FILE NAME:	16-183	1A OF 2

MULTI-WELL PLAN SECTION 6, T1N, R67W



NOTES:

1. ▲ INDICATES SECTION CORNER.
2. ● INDICATES CALCULATED CORNER.
3. BASIS OF BEARING DERIVED FROM COLORADO COORDINATE SYSTEM OF 1983 NORTH ZONE.
4. ALL MEASURED DISTANCES ARE GRID. COMBINED SCALE FACTOR: .99972179 CALCULATED FROM THE SW. CORNER OF SECTION 6, T1N, R67W.
5. WELL FOOTAGES ARE MEASURED AT RIGHT ANGLES TO THE SECTION LINES.
6. NO. 1 & NO. 2 AS SHOWN HEREON ARE GOVERNMENT LOTS 1 & 2 PER THE ORIGINAL GLO SURVEY.



WELL PAD - RANGER 18-7HZ

MULTI-WELL PLAN
RANGER 7-1HZ, RANGER 7-2HZ,
RANGER 7-3HZ, RANGER 7-4HZ, RANGER 7-5HZ,
RANGER 7-6HZ, RANGER 7-7HZ, RANGER 7-8HZ,
RANGER 7-9HZ, RANGER 7-10HZ, RANGER 7-11HZ,
RANGER 7-12HZ, RANGER 7-13HZ, RANGER 7-14HZ,
RANGER 7-15HZ, RANGER 7-16HZ, RANGER 7-17HZ,
RANGER 7-18HZ, RANGER 7-19HZ & RANGER 7-20HZ
LOCATED IN SECTIONS 6 & 7, T1N, R67W, 6TH P.M. &
LOCATED IN SECTION 31, T2N, R67W, 6TH P.M.
WELD COUNTY, COLORADO

**Kerr-McGee Oil &
Gas Onshore L.P.**
1099 18th Street
Denver, Colorado 80202



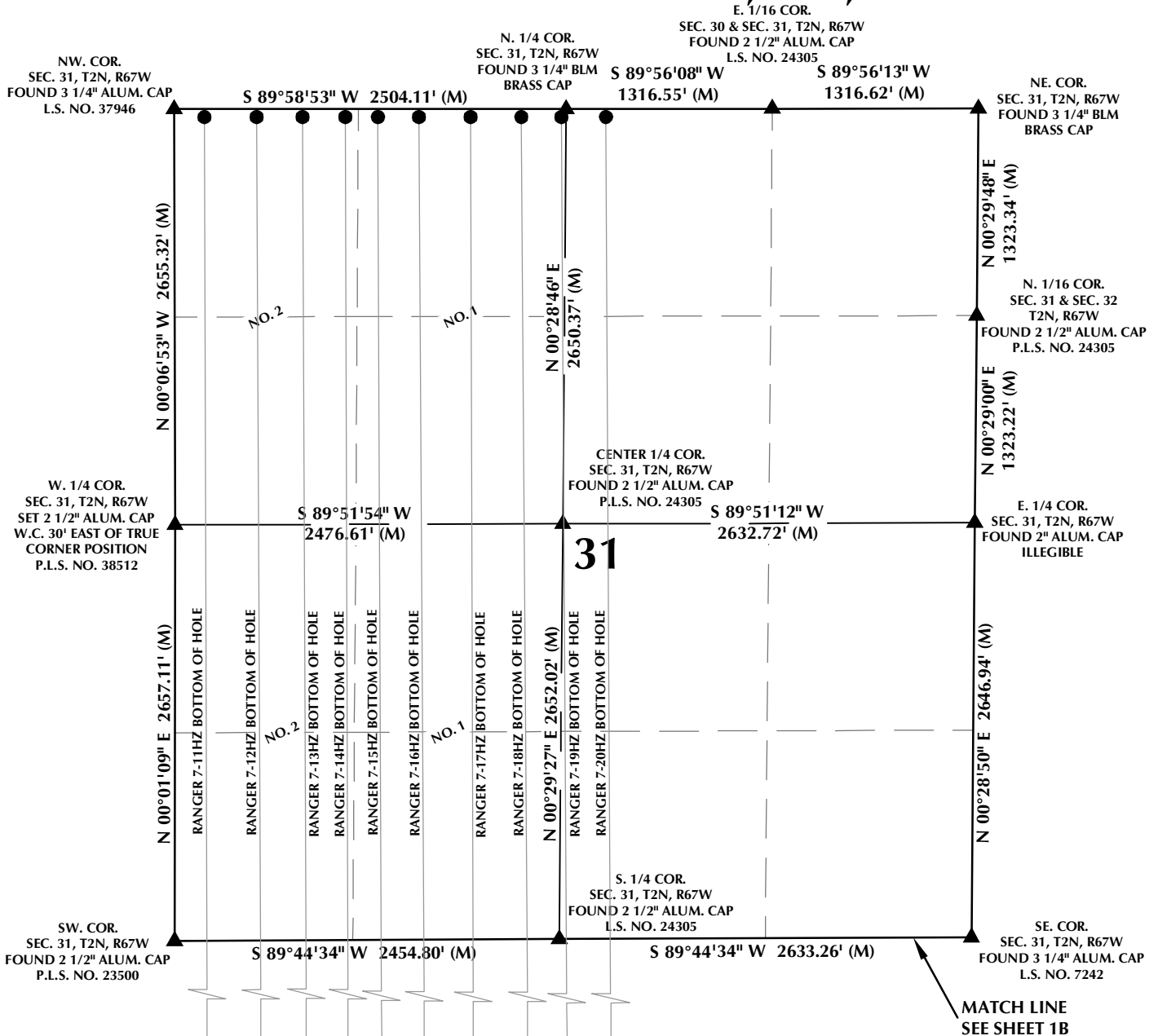
CONSULTING, LLC

SHERIDAN OFFICE
1095 Saberton Avenue
Sheridan, Wyoming 82801
Phone 307-674-0609

LOVELAND OFFICE
6706 North Franklin Avenue
Loveland, Colorado 80538
Phone 970-776-4331

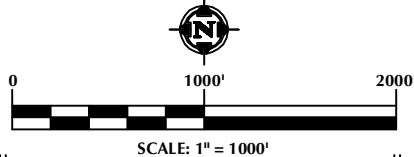
DRAFTED BY:	LMO	CHECKED BY:	RKF	SHEET NO:
DATE DRAFTED:	6/7/18	DATE SURVEYED:	5/7/18	1B
REVISED:		FILE NAME:	16-183	1B OF 2

MULTI-WELL PLAN SECTION 31, T2N, R67W



NOTES:

- ▲ INDICATES SECTION CORNER.
- INDICATES CALCULATED CORNER.
- BASIS OF BEARING DERIVED FROM COLORADO COORDINATE SYSTEM OF 1983 NORTH ZONE.
- ALL MEASURED DISTANCES ARE GRID.
- COMBINED SCALE FACTOR: .99972179 CALCULATED FROM THE SW. CORNER OF SECTION 6, T1N, R67W.
- WELL FOOTAGES ARE MEASURED AT RIGHT ANGLES TO THE SECTION LINES.
- NO. 1 & NO. 2 AS SHOWN HEREON ARE GOVERNMENT LOTS 1 & 2 PER THE ORIGINAL GLO SURVEY.



WELL PAD - RANGER 18-7HZ

MULTI-WELL PLAN
RANGER 7-1HZ, RANGER 7-2HZ,
RANGER 7-3HZ, RANGER 7-4HZ, RANGER 7-5HZ,
RANGER 7-6HZ, RANGER 7-7HZ, RANGER 7-8HZ,
RANGER 7-9HZ, RANGER 7-10HZ, RANGER 7-11HZ,
RANGER 7-12HZ, RANGER 7-13HZ, RANGER 7-14HZ,
RANGER 7-15HZ, RANGER 7-16HZ, RANGER 7-17HZ,
RANGER 7-18HZ, RANGER 7-19HZ & RANGER 7-20HZ
LOCATED IN SECTIONS 6 & 7, T1N, R67W, 6TH P.M. &
LOCATED IN SECTION 31, T2N, R67W, 6TH P.M.
WELD COUNTY, COLORADO

**Kerr-McGee Oil &
Gas Onshore L.P.**

1099 18th Street
Denver, Colorado 80202



CONSULTING, LLC

SHERIDAN OFFICE
1095 Saberton Avenue
Sheridan, Wyoming 82801
Phone 307-674-0609

LOVELAND OFFICE
6706 North Franklin Avenue
Loveland, Colorado 80538
Phone 970-776-4331

DRAFTED BY:	LMO	CHECKED BY:	RKF	SHEET NO:
DATE DRAFTED:	6/7/18	DATE SURVEYED:	5/7/18	1C
REVISED:		FILE NAME:	16-183	1C OF 2

MULTI-WELL PLAN RANGER 18-7HZ

WELL NOTES:

RANGER 7-1HZ

SURFACE: 705' FNL, 1454' FWL, SEC. 7, T1N, R67W
BOTTOM HOLE: 50' FSL, 79' FWL, SEC. 7, T1N, R67W

RANGER 7-2HZ

SURFACE: 705' FNL, 1469' FWL, SEC. 7, T1N, R67W
BOTTOM HOLE: 49' FSL, 361' FWL, SEC. 7, T1N, R67W

RANGER 7-3HZ

SURFACE: 705' FNL, 1484' FWL, SEC. 7, T1N, R67W
BOTTOM HOLE: 49' FSL, 544' FWL, SEC. 7, T1N, R67W

RANGER 7-4HZ

SURFACE: 705' FNL, 1499' FWL, SEC. 7, T1N, R67W
BOTTOM HOLE: 50' FSL, 943' FWL, SEC. 7, T1N, R67W

RANGER 7-5HZ

SURFACE: 705' FNL, 1514' FWL, SEC. 7, T1N, R67W
BOTTOM HOLE: 50' FSL, 1240' FWL, SEC. 7, T1N, R67W

RANGER 7-6HZ

SURFACE: 705' FNL, 1529' FWL, SEC. 7, T1N, R67W
BOTTOM HOLE: 50' FSL, 1537' FWL, SEC. 7, T1N, R67W

RANGER 7-7HZ

SURFACE: 705' FNL, 1544' FWL, SEC. 7, T1N, R67W
BOTTOM HOLE: 50' FSL, 1852' FWL, SEC. 7, T1N, R67W

RANGER 7-8HZ

SURFACE: 705' FNL, 1559' FWL, SEC. 7, T1N, R67W
BOTTOM HOLE: 51' FSL, 2165' FWL, SEC. 7, T1N, R67W

RANGER 7-9HZ

SURFACE: 705' FNL, 1574' FWL, SEC. 7, T1N, R67W
BOTTOM HOLE: 50' FSL, 2397' FWL, SEC. 7, T1N, R67W

RANGER 7-10HZ

SURFACE: 704' FNL, 1589' FWL, SEC. 7, T1N, R67W
BOTTOM HOLE: 50' FSL, 2521' FWL, SEC. 7, T1N, R67W

RANGER 7-11HZ

SURFACE: 825' FNL, 1454' FWL, SEC. 7, T1N, R67W
BOTTOM HOLE: 50' FNL, 193' FWL, SEC. 31, T2N, R67W

RANGER 7-12HZ

SURFACE: 825' FNL, 1469' FWL, SEC. 7, T1N, R67W
BOTTOM HOLE: 50' FNL, 526' FWL, SEC. 31, T2N, R67W

RANGER 7-13HZ

SURFACE: 825' FNL, 1484' FWL, SEC. 7, T1N, R67W
BOTTOM HOLE: 50' FNL, 820' FWL, SEC. 31, T2N, R67W

RANGER 7-14HZ

SURFACE: 825' FNL, 1499' FWL, SEC. 7, T1N, R67W
BOTTOM HOLE: 50' FNL, 1093' FWL, SEC. 31, T2N, R67W

RANGER 7-15HZ

SURFACE: 825' FNL, 1514' FWL, SEC. 7, T1N, R67W
BOTTOM HOLE: 50' FNL, 1301' FWL, SEC. 31, T2N, R67W

RANGER 7-16HZ

SURFACE: 825' FNL, 1529' FWL, SEC. 7, T1N, R67W
BOTTOM HOLE: 50' FNL, 1563' FWL, SEC. 31, T2N, R67W

RANGER 7-17HZ

SURFACE: 825' FNL, 1544' FWL, SEC. 7, T1N, R67W
BOTTOM HOLE: 50' FNL, 1893' FWL, SEC. 31, T2N, R67W

RANGER 7-18HZ

SURFACE: 825' FNL, 1559' FWL, SEC. 7, T1N, R67W
BOTTOM HOLE: 50' FNL, 2217' FWL, SEC. 31, T2N, R67W

RANGER 7-19HZ

SURFACE: 825' FNL, 1574' FWL, SEC. 7, T1N, R67W
BOTTOM HOLE: 51' FNL, 2474' FWL, SEC. 31, T2N, R67W

RANGER 7-20HZ

SURFACE: 824' FNL, 1589' FWL, SEC. 7, T1N, R67W
BOTTOM HOLE: 50' FNL, 2379' FWL, SEC. 31, T2N, R67W

WELL PAD - RANGER 18-7HZ

MULTI-WELL PLAN
RANGER 7-1HZ, RANGER 7-2HZ,
RANGER 7-3HZ, RANGER 7-4HZ, RANGER 7-5HZ,
RANGER 7-6HZ, RANGER 7-7HZ, RANGER 7-8HZ,
RANGER 7-9HZ, RANGER 7-10HZ, RANGER 7-11HZ,
RANGER 7-12HZ, RANGER 7-13HZ, RANGER 7-14HZ,
RANGER 7-15HZ, RANGER 7-16HZ, RANGER 7-17HZ,
RANGER 7-18HZ, RANGER 7-19HZ & RANGER 7-20HZ
LOCATED IN SECTIONS 6 & 7, T1N, R67W, 6TH P.M. &
LOCATED IN SECTION 31, T2N, R67W, 6TH P.M.
WELD COUNTY, COLORADO

**Kerr-McGee Oil &
Gas Onshore L.P.**
1099 18th Street
Denver, Colorado 80202



CONSULTING, LLC

SHERIDAN OFFICE
1095 Saberton Avenue
Sheridan, Wyoming 82801
Phone 307-674-0609

LOVELAND OFFICE
6706 North Franklin Avenue
Loveland, Colorado 80538
Phone 970-776-4331

DRAFTED BY:	LMO	CHECKED BY:	RKF	SHEET NO:
DATE DRAFTED:	6/7/18	DATE SURVEYED:	5/7/18	2
REVISED:		FILE NAME:	16-183	2 OF 2