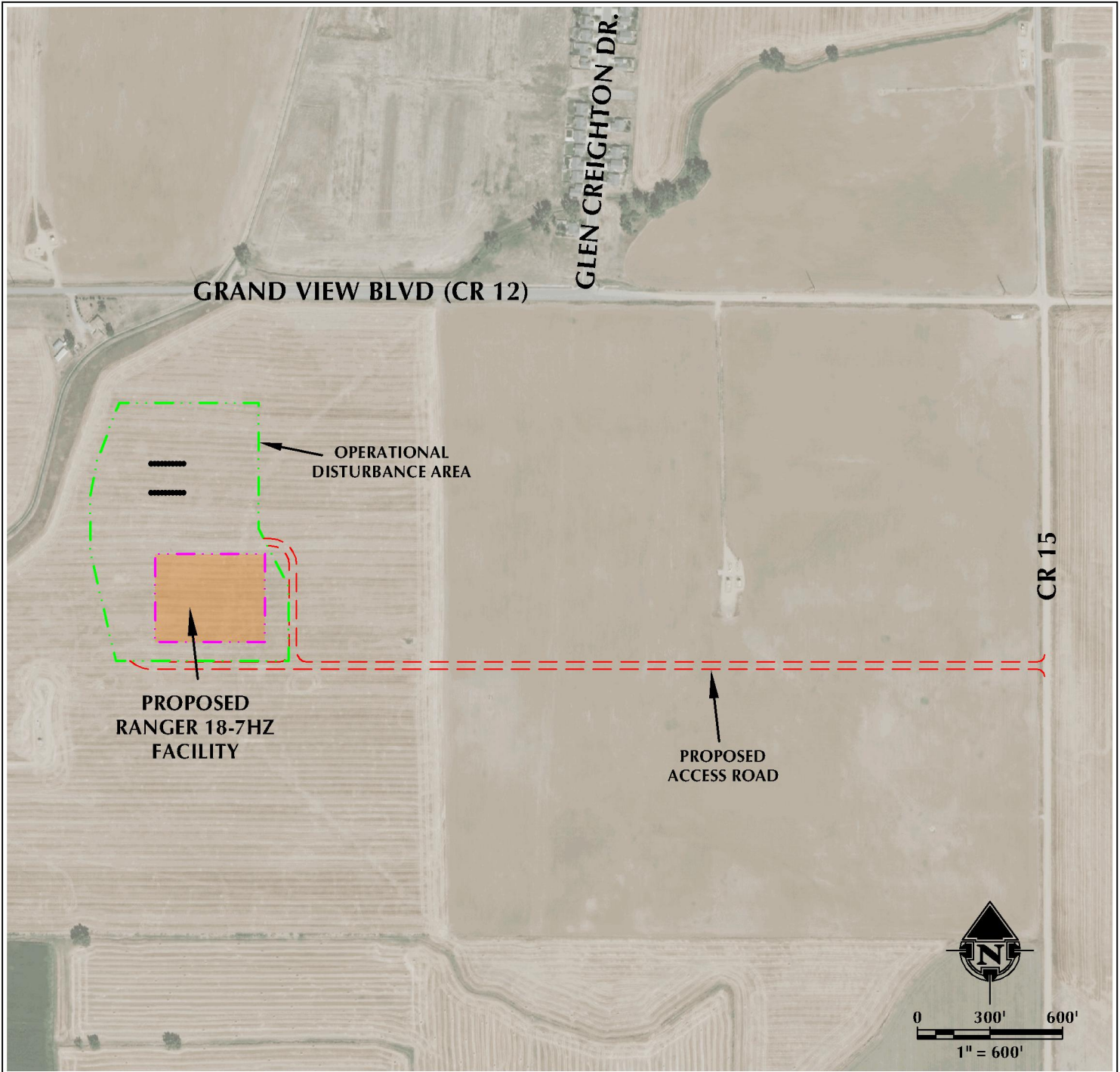


RANGER 18-7HZ ACCESS MAP

E1/2 NW1/4 SECTION 7, TOWNSHIP 1 NORTH, RANGE 67 WEST, 6TH P.M.



LEGEND

- PROPOSED WELL
- ACCESS
- PROPOSED FACILITY
- DISTURBANCE AREA

INTERSECTION OF
ACCESS ROAD AND CR 15

LATITUDE: 40.068762°

LONGITUDE: -104.923953°



CONSULTING, LLC
LOVELAND OFFICE
6706 North Franklin Avenue
Loveland, Colorado 80538
Phone: 970-776-4331

SHERIDAN OFFICE
1095 Suberton Avenue
Sheridan, Wyoming 82801
Phone: 307-674-0609

DATE SURVEYED: 5/7/18
DATE: 6/7/18
DRAFTER: DD
REVISED:

DATA SOURCES:
- AERIAL COURTESY OF ESRI, INC.

PREPARED FOR:
Kerr-McGee Oil & Gas Onshore L.P.