



# Kerr-McGee Oil & Gas Onshore LP

A subsidiary of Anadarko Petroleum Corporation

1099 18<sup>th</sup> Street  
Denver, CO 80202  
720-929-6000

October 18, 2018

Julie Murphy  
Director, Colorado Oil and Gas Conservation Commission  
Department of Natural Resources  
The Chancery Building  
1120 Lincoln Street, Suite 801  
Denver, CO 80203

Re: **30 Day Certification Letter - 318A.e**  
MJOLNIR 3-5HZ (Doc No. 401760654)  
Township 1 North, Range 68 West  
Section 3: SWSW  
Unit Acreage: 800 Acres  
Unit Spacing: 01N-68W; SEC 02: SWSW;  
01N-68W; SEC 03: SESE;  
01N-68W; SEC 10: E2E2;  
01N-68W; SEC 11: W2W2;  
01N-68W; SEC 14: W2W2;  
01N-68W; SEC 15: E2E2;  
01N-68W; SEC 22: NENE;  
01N-68W; SEC 23: NWNW  
Weld County, Colorado


Dear Director Murphy:

Kerr-McGee Oil and Gas Onshore LP ("KMG") hereby certifies that a thirty (30) day notice has been given by certified mail to all mineral owners in the proposed wellbore spacing unit. We have not received any objections to such well location, proposed spacing unit, or additional producing formation. KMG hereby respectfully requests approval of this boundary well.

If there are any questions or issues regarding this permit, please contact Lisa Schindler at (720) 929-3091.

Sincerely,

**Kerr-McGee Oil and Gas Onshore LP**



Lisa Schindler  
Sr. Regulatory Analyst

Enclosure

DISTANCE FROM COMPLETED  
PORTION OF WELLBORE TO  
NEAREST UNIT BOUNDARY= 958'

# MJOLNIR 3-5HZ WELLBORE SPACING UNIT

**MJOLNIR 3-5HZ**  
SURFACE LOCATION

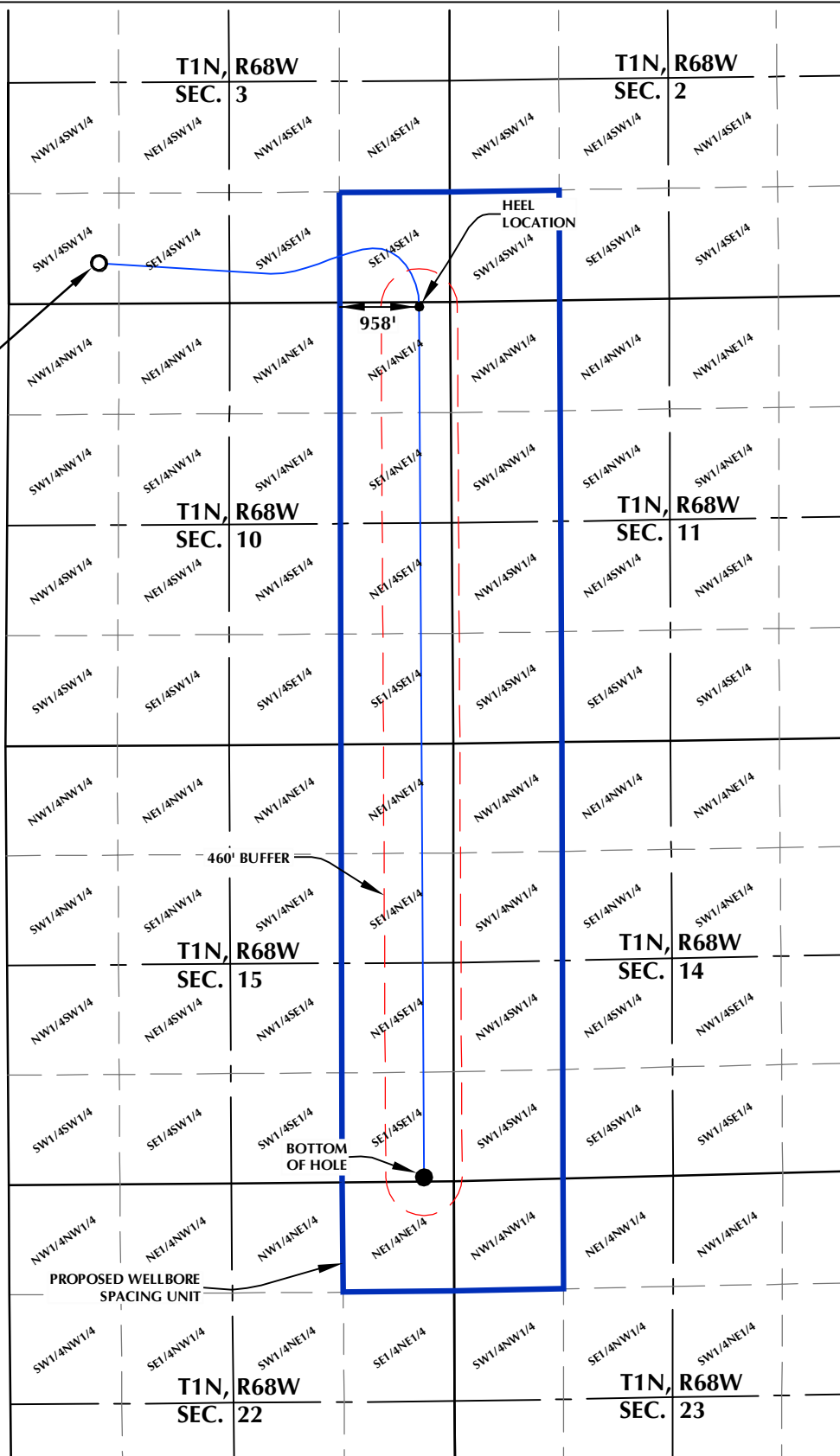
**SURFACE LOCATION: NAD 83**  
GROUND ELEVATION= 5048.4'  
LATITUDE= 40.074378°  
LONGITUDE= -104.995072°  
LATITUDE= 40°04'27.759"  
LONGITUDE= -104°59'42.261"  
**HEEL LOCATION: NAD 83**  
LATITUDE= 40.072873°  
LONGITUDE= -104.981296°  
LATITUDE= 40°04'22.342"  
LONGITUDE= -104°58'52.666"  
**BOTTOM HOLE LOCATION: NAD 83**  
LATITUDE= 40.044082°  
LONGITUDE= -104.981312°  
LATITUDE= 40°02'38.695"  
LONGITUDE= -104°58'52.723"



SCALE: 1" = 2000'

## NOTES:

1. DRAWING LATITUDE AND LONGITUDE COORDINATES ARE NAD 83 (2011)(EPOCH:2010).
2. ELEVATION BASED ON NAVD88 (GEOID12B).
3. BASIS OF BEARING DERIVED FROM COLORADO COORDINATE SYSTEM OF 1983 NORTH ZONE.
4. ALL MEASURED DISTANCES ARE GRID. COMBINED SCALE FACTOR: .99972335 CALCULATED FROM THE W. 1/4 CORNER OF SECTION 3, T1N, R68W.



## WELL PAD - MJOLNIR 13-3HZ PAD

MJOLNIR 3-5HZ  
WELLBORE SPACING UNIT  
492' FSL & 1086' FWL SWSW (SURFACE)  
LOCATED IN SECTION 3  
50' FNL & 371' FEL NENE (HEEL)  
LOCATED IN SECTION 10  
51' FSL & 357' FEL SESE (BOTTOM)  
LOCATED IN SECTION 15  
T1N, R68W, 6TH P.M.  
WELD COUNTY, COLORADO

**Kerr-McGee Oil &  
Gas Onshore L.P.**  
1099 18th Street  
Denver, Colorado 80202



## CONSULTING, LLC

**SHERIDAN OFFICE**  
1095 Saberton Avenue  
Sheridan, Wyoming 82801  
Phone 307-674-0609

**LOVELAND OFFICE**  
6706 North Franklin Avenue  
Loveland, Colorado 80538  
Phone 970-776-4331

DRAFTED BY:	LMO	CHECKED BY:	RKF
DATE DRAFTED:	8/9/18	DATE SURVEYED:	7/30/18
REVISED:		FILE NAME:	14-106