



# Kerr-McGee Oil & Gas Onshore LP

A subsidiary of Anadarko Petroleum Corporation

1099 18<sup>th</sup> Street  
Denver, CO 80202  
720-929-6000

October 18, 2018

Julie Murphy  
Director, Colorado Oil and Gas Conservation Commission  
Department of Natural Resources  
The Chancery Building  
1120 Lincoln Street, Suite 801  
Denver, CO 80203

Re: **30 Day Certification Letter - 318A.e**  
MC 3-2HZ (Doc No. 401760626)  
Township 1 North, Range 68 West  
Section 3: NWSW  
Unit Acreage: 400 Acres  
Unit Spacing: 01N-68W; SEC 04: SWSE;  
01N-68W; SEC 09: W2E2;  
01N-68W; SEC 16: W2E2;  
01N-68W; SEC 21: NWNE  
Weld County, Colorado

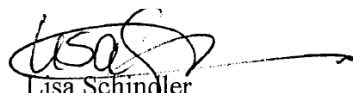
Dear Director Murphy:

Kerr McGee Oil and Gas Onshore LP ("KMG") hereby certifies that KMG owns one hundred percent (100%) of the leasehold interest in the mineral rights in the proposed spacing unit. KMG hereby respectfully requests approval of this boundary well.

If you have any questions or issues regarding this permit, please contact me at (720) 929-3091.

Sincerely,

**Kerr-McGee Oil and Gas Onshore LP**

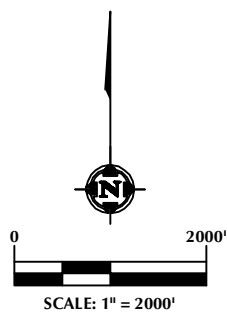
  
Lisa Schindler  
Sr. Regulatory Analyst

Enclosure

DISTANCE FROM COMPLETED  
PORTION OF WELLBORE TO  
NEAREST UNIT BOUNDARY= 533'

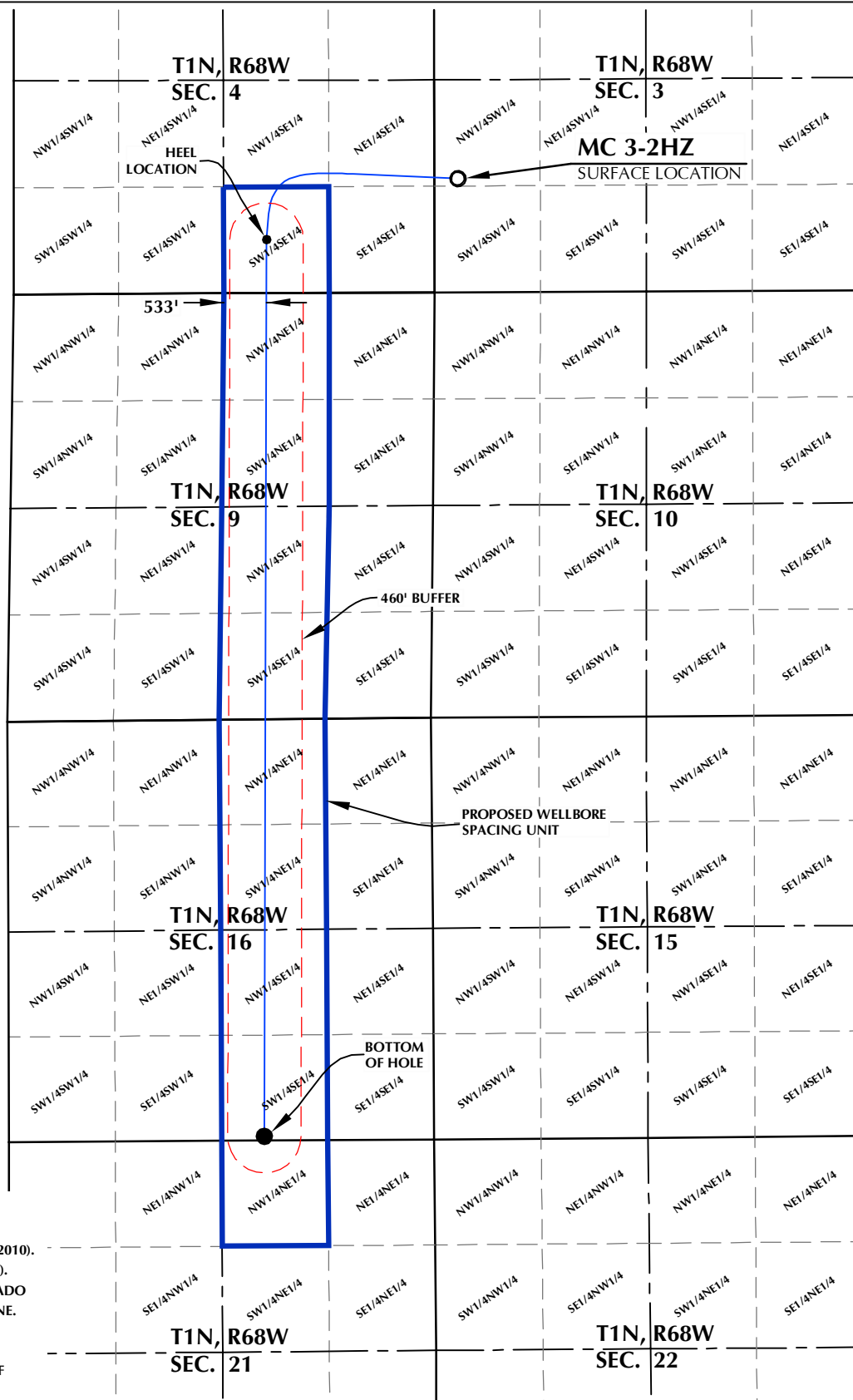
# MC 3-2HZ WELLBORE SPACING UNIT

SURFACE LOCATION: NAD 83  
GROUND ELEVATION= 5044.0'  
LATITUDE= 40.076948°  
LONGITUDE= -104.997879°  
LATITUDE= 40°04'37.012"  
LONGITUDE= -104°59'52.364"  
HEEL LOCATION: NAD 83  
LATITUDE= 40.074887°  
LONGITUDE= -105.006461°  
LATITUDE= 40°04'29.592"  
LONGITUDE= -105°00'23.260"  
BOTTOM HOLE LOCATION: NAD 83  
LATITUDE= 40.044047°  
LONGITUDE= -105.006783°  
LATITUDE= 40°02'38.569"  
LONGITUDE= -105°00'24.419"



## NOTES:

1. DRAWING LATITUDE AND LONGITUDE COORDINATES ARE NAD 83 (2011)(EPOCH:2010).
2. ELEVATION BASED ON NAVD88 (GEOID12B).
3. BASIS OF BEARING DERIVED FROM COLORADO COORDINATE SYSTEM OF 1983 NORTH ZONE.
4. ALL MEASURED DISTANCES ARE GRID. COMBINED SCALE FACTOR: .99972335 CALCULATED FROM THE W. 1/4 CORNER OF SECTION 3, T1N, R68W.



## WELL PAD - MC 13-3HZ PAD

MC 3-2HZ  
WELLBORE SPACING UNIT  
1427' FSL & 297' FWL NWSW (SURFACE)  
LOCATED IN SECTION 3  
673' FSL & 2102' FEL SWSE (HEEL)  
LOCATED IN SECTION 4  
50' FSL & 2127' FEL SWSE (BOTTOM)  
LOCATED IN SECTION 16  
T1N, R68W, 6TH P.M.  
WELD COUNTY, COLORADO

**Kerr-McGee Oil &  
Gas Onshore L.P.**  
1099 18th Street  
Denver, Colorado 80202



## CONSULTING, LLC

SHERIDAN OFFICE  
1095 Saberton Avenue  
Sheridan, Wyoming 82801  
Phone 307-674-0609

LOVELAND OFFICE  
6706 North Franklin Avenue  
Loveland, Colorado 80538  
Phone 970-776-4331

DRAFTED BY:	LMO	CHECKED BY:	RKF
DATE DRAFTED:	8/3/18	DATE SURVEYED:	7/16/18
REVISED:		FILE NAME:	14-106