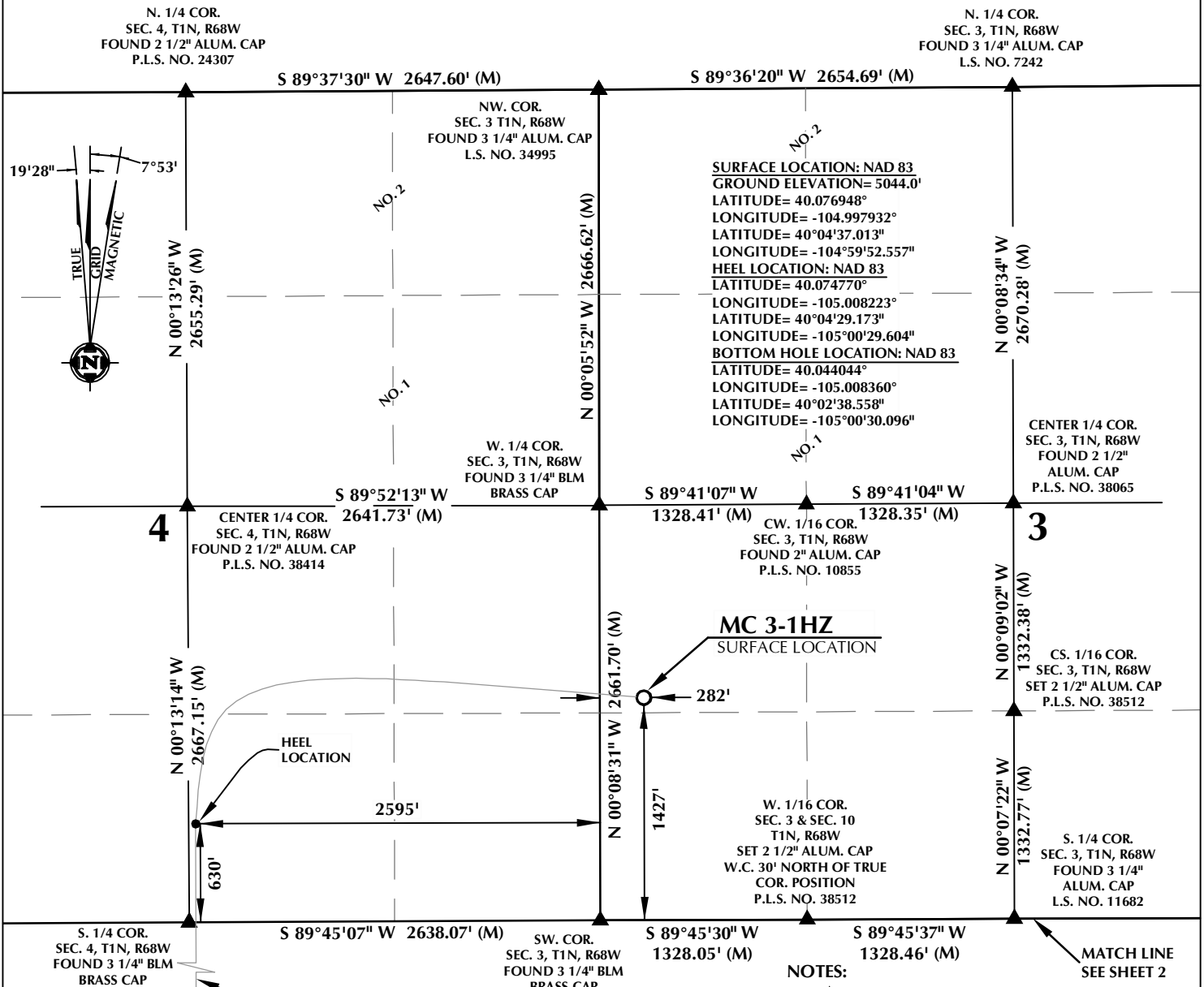


T1N, R68W



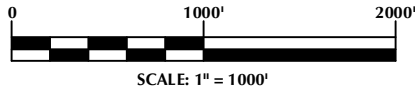
CERTIFICATE OF SURVEYOR:

WELLBORE CONTINUES INTO
SECTION 9, T1N, R68W

THIS IS TO CERTIFY THAT THE ABOVE PLAT WAS PREPARED FROM FIELD NOTES OF ACTUAL SURVEYS MADE BY ME OR UNDER MY SUPERVISION AND THAT THE SAME ARE TRUE AND CORRECT TO THE BEST OF MY KNOWLEDGE AND BELIEF. THIS CERTIFICATE DOES NOT REPRESENT A LAND SURVEY PLAT OR IMPROVEMENT SURVEY PLAT AS DEFINED BY C.R.S. 38-5-102 AND CANNOT BE RELIED UPON TO DETERMINE OWNERSHIP.

Randall K. French
RANDALL K. FRENCH
PROFESSIONAL LAND SURVEYOR
COLORADO REGISTRATION NUMBER 38512
8/3/18

NOTICE:
ACCORDING TO COLORADO STATE LAW YOU MUST TAKE LEGAL ACTION BASED UPON ANY DEFECT IN THIS SURVEY WITHIN THREE YEARS AFTER YOU FIRST DISCOVER SUCH DEFECT. IN NO EVENT MAY ANY ACTION BASED UPON ANY DEFECT IN THIS SURVEY BE COMMENCED MORE THAN TEN YEARS FROM THE DATE ON THE CERTIFICATION SHOWN HEREON.



NOTE:
MAGNETIC NORTH IS CURRENT AS OF 7/16/2018.
MAGNETIC NORTH CHANGES WEST 0°06' PER YEAR.

NOTES:

- ▲ INDICATES SECTION CORNER.
- INDICATES CALCULATED CORNER.
- ELEVATION BASED ON NAVD88 (GEOID12B).
- BASIS OF BEARING DERIVED FROM COLORADO COORDINATE SYSTEM OF 1983 NORTH ZONE.
- ALL MEASURED DISTANCES ARE GRID. COMBINED SCALE FACTOR: .99972335 CALCULATED FROM THE W. 1/4 CORNER OF SECTION 3, T1N, R68W.
- OPERATOR: TRAVIS HOLLAND / PDOP = 1.5.
- SEE ADDENDUM TO WELL LOCATION CERTIFICATE FOR EXISTING IMPROVEMENTS WITHIN 500' OF THE WELL PAD.
- WELL FOOTAGES ARE MEASURED AT RIGHT ANGLES TO THE SECTION LINES.
- THE BOTTOM OF HOLE BEARS S00°07'19"E, 11193' FROM THE HEEL LOCATION.
- NO. 1 & NO. 2 AS SHOWN HEREON ARE GOVERNMENT LOTS 1 & 2 PER THE ORIGINAL GLO SURVEY.

WELL PAD - MC 13-3HZ PAD

MC 3-1HZ
WELL LOCATION CERTIFICATE
1427' FSL & 282' FVL NWSW (SURFACE)
LOCATED IN SECTION 3
630' FSL & 2595' FEL SWSE (HEEL)
LOCATED IN SECTION 4
50' FSL & 2568' FEL SWSE (BOTTOM)
LOCATED IN SECTION 16
T1N, R68W, 6TH P.M.
WELD COUNTY, COLORADO

**Kerr-McGee Oil &
Gas Onshore L.P.**
1099 18th Street
Denver, Colorado 80202



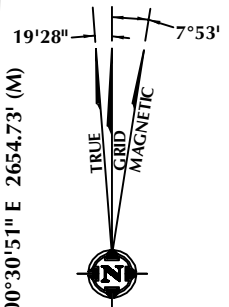
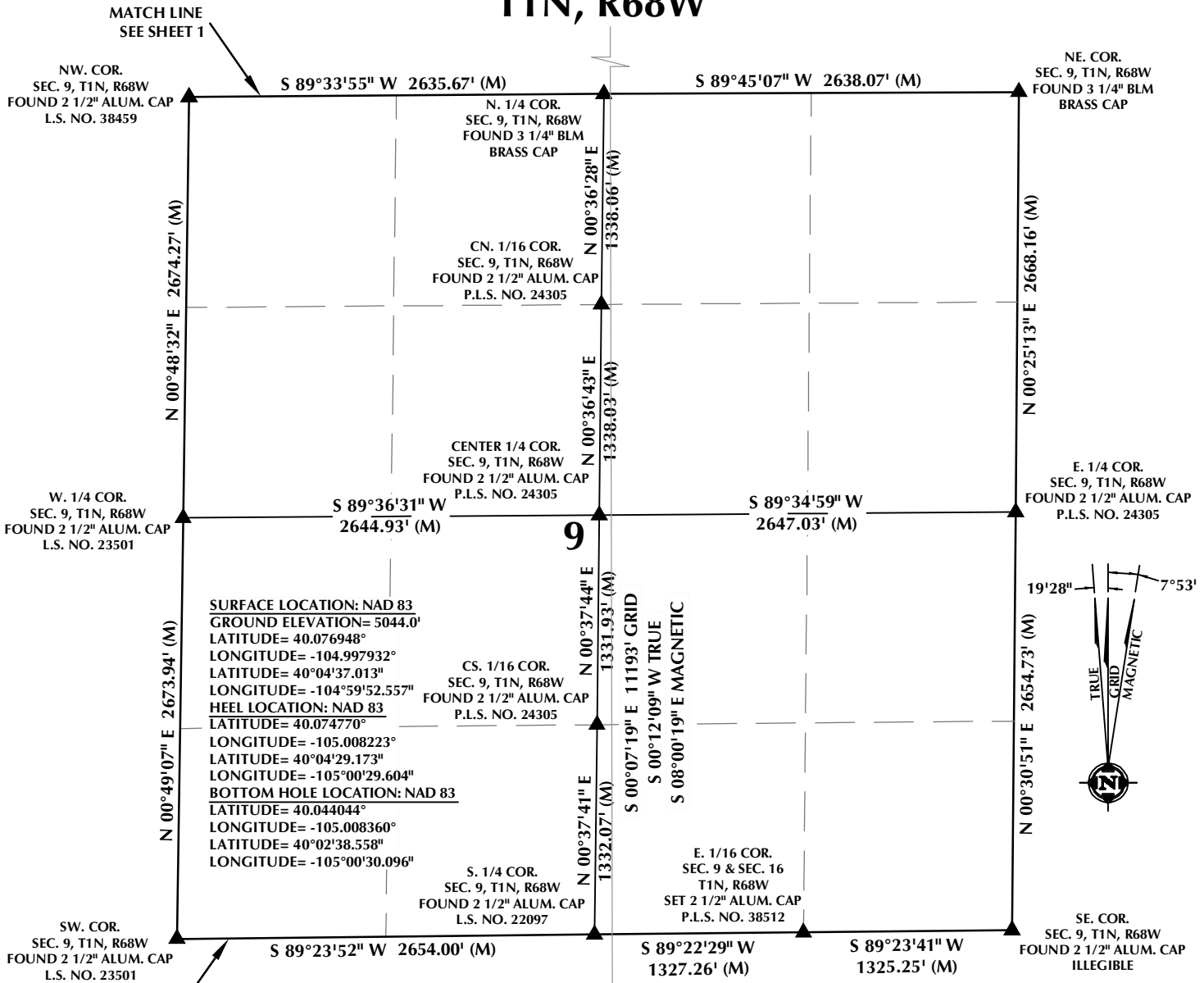
CONSULTING, LLC

SHERIDAN OFFICE
1095 Saberton Avenue
Sheridan, Wyoming 82801
Phone 307-674-0609

LOVELAND OFFICE
6706 North Franklin Avenue
Loveland, Colorado 80538
Phone 970-776-4331

DRAFTED BY:	LMO	CHECKED BY:	RKF	SHEET NO:
DATE DRAFTED:	8/3/18	DATE SURVEYED:	7/16/18	1
REVISED:		FILE NAME:	14-106	1 OF 3

T1N, R68W

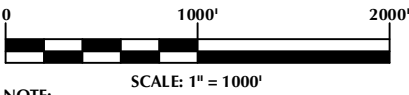


CERTIFICATE OF SURVEYOR:

THIS IS TO CERTIFY THAT THE ABOVE PLAT WAS PREPARED FROM FIELD NOTES OF ACTUAL SURVEYS MADE BY ME OR UNDER MY SUPERVISION AND THAT THE SAME ARE TRUE AND CORRECT TO THE BEST OF MY KNOWLEDGE AND BELIEF. THIS CERTIFICATE DOES NOT REPRESENT A LAND SURVEY PLAT OR IMPROVEMENT SURVEY PLAT AS DEFINED BY C.R.S. 38-5-102 AND CANNOT BE RELIED UPON TO DETERMINE OWNERSHIP.

Randall K. French
 RANDALL K. FRENCH
 PROFESSIONAL LAND SURVEYOR
 COLORADO REGISTRATION NUMBER 38512
 8/3/18

NOTICE: ACCORDING TO COLORADO STATE LAW YOU MUST TAKE LEGAL ACTION BASED UPON ANY DEFECT IN THIS SURVEY WITHIN THREE YEARS AFTER YOU FIRST DISCOVER SUCH DEFECT. IN NO EVENT MAY ANY ACTION BASED UPON ANY DEFECT IN THIS SURVEY BE COMMENCED MORE THAN TEN YEARS FROM THE DATE ON THE CERTIFICATION SHOWN HEREON.



NOTE: MAGNETIC NORTH IS CURRENT AS OF 7/16/2018. MAGNETIC NORTH CHANGES WEST 0°06' PER YEAR.

NOTES:

- ▲ INDICATES SECTION CORNER.
- INDICATES CALCULATED CORNER.
- ELEVATION BASED ON NAVD88 (GEOID12B).
- BASIS OF BEARING DERIVED FROM COLORADO COORDINATE SYSTEM OF 1983 NORTH ZONE.
- ALL MEASURED DISTANCES ARE GRID. COMBINED SCALE FACTOR: .99972335 CALCULATED FROM THE W. 1/4 CORNER OF SECTION 3, T1N, R68W.
- OPERATOR: TRAVIS HOLLAND / PDOP = 1.5.
- SEE ADDENDUM TO WELL LOCATION CERTIFICATE FOR EXISTING IMPROVEMENTS WITHIN 500' OF THE WELL PAD.
- WELL FOOTAGES ARE MEASURED AT RIGHT ANGLES TO THE SECTION LINES.
- THE BOTTOM OF HOLE BEARS S00°07'19"E, 11193' FROM THE HEEL LOCATION.

WELL PAD - MC 13-3HZ PAD

MC 13-1HZ
 WELL LOCATION CERTIFICATE
 1427' FSL & 282' FWL NWSW (SURFACE)
 LOCATED IN SECTION 3
 630' FSL & 2595' FEL SWSE (HEEL)
 LOCATED IN SECTION 4
 50' FSL & 2568' FEL SWSE (BOTTOM)
 LOCATED IN SECTION 16
 T1N, R68W, 6TH P.M.
 WELD COUNTY, COLORADO

Kerr-McGee Oil & Gas Onshore L.P.
 1099 18th Street
 Denver, Colorado 80202



CONSULTING, LLC

SHERIDAN OFFICE
 1095 Saberton Avenue
 Sheridan, Wyoming 82801
 Phone 307-674-0609

LOVELAND OFFICE
 6706 North Franklin Avenue
 Loveland, Colorado 80538
 Phone 970-776-4331

DRAFTED BY:	LMO	CHECKED BY:	RKF	SHEET NO:
DATE DRAFTED:	8/3/18	DATE SURVEYED:	7/16/18	2
REVISED:		FILE NAME:	14-106	2 OF 3

T1N, R68W

MATCH LINE
SEE SHEET 2

NW. COR.
SEC. 16, T1N, R68W
FOUND 2 1/2" ALUM. CAP
L.S. NO. 23501

S 89°23'52" W 2654.00' (M)

N. 1/4 COR.
SEC. 16, T1N, R68W
FOUND 2 1/2" ALUM. CAP
L.S. NO. 22097

S 89°22'29" W 1327.26' (M)

E. 1/16 COR.
SEC. 9 & SEC. 16
T1N, R68W
SET 2 1/2" ALUM. CAP
P.L.S. NO. 38512

NE. COR.
SEC. 16, T1N, R68W
FOUND 2 1/2" ALUM. CAP
ILLEGIBLE

N 00°12'49" W 2630.89' (M)

N 00°18'49" W 2636.19' (M)

S 89°30'45" W 2658.56' (M)

CENTER 1/4 COR.
SEC. 16, T1N, R68W
FOUND 3 1/4" ALUM. CAP
P.L.S. NO. 6973

16

W. 1/4 COR.
SEC. 16, T1N, R68W
FOUND 2" ALUM. CAP
L.S. NO. 14083

S 89°31'07" W 2659.90' (M)

E. 1/4 COR.
SEC. 16, T1N, R68W
FOUND 2" ALUM. CAP
L.S. NO. 14083

N 00°13'29" W 2630.78' (M)

S 00°07'19" E 11193' GRID
S 00°12'09" W TRUE
S 08°00'19" E MAGNETIC

N 00°19'18" W 2636.89' (M)

19'28"
7°53'
TRUE
GRID
MAGNETIC

SURFACE LOCATION: NAD 83
GROUND ELEVATION= 5044.0'
LATITUDE= 40.076948°
LONGITUDE= -104.997932°
LATITUDE= 40°04'37.013"
LONGITUDE= -104°59'52.557"
HEEL LOCATION: NAD 83
LATITUDE= 40.074770°
LONGITUDE= -105.008223°
LATITUDE= 40°04'29.173"
LONGITUDE= -105°00'29.604"
BOTTOM HOLE LOCATION: NAD 83
LATITUDE= 40.044044°
LONGITUDE= -105.008360°
LATITUDE= 40°02'38.558"
LONGITUDE= -105°00'30.096"

S. 1/4 COR.
SEC. 16, T1N, R68W
FOUND 2" ALUM. CAP
L.S. NO. 28258

50'

50' FSL & 2568' FEL

2568'

SW. COR.
SEC. 16, T1N, R68W
FOUND 2 1/2" ALUM. CAP
L.S. NO. 23501

S 89°38'40" W 2663.00' (M)

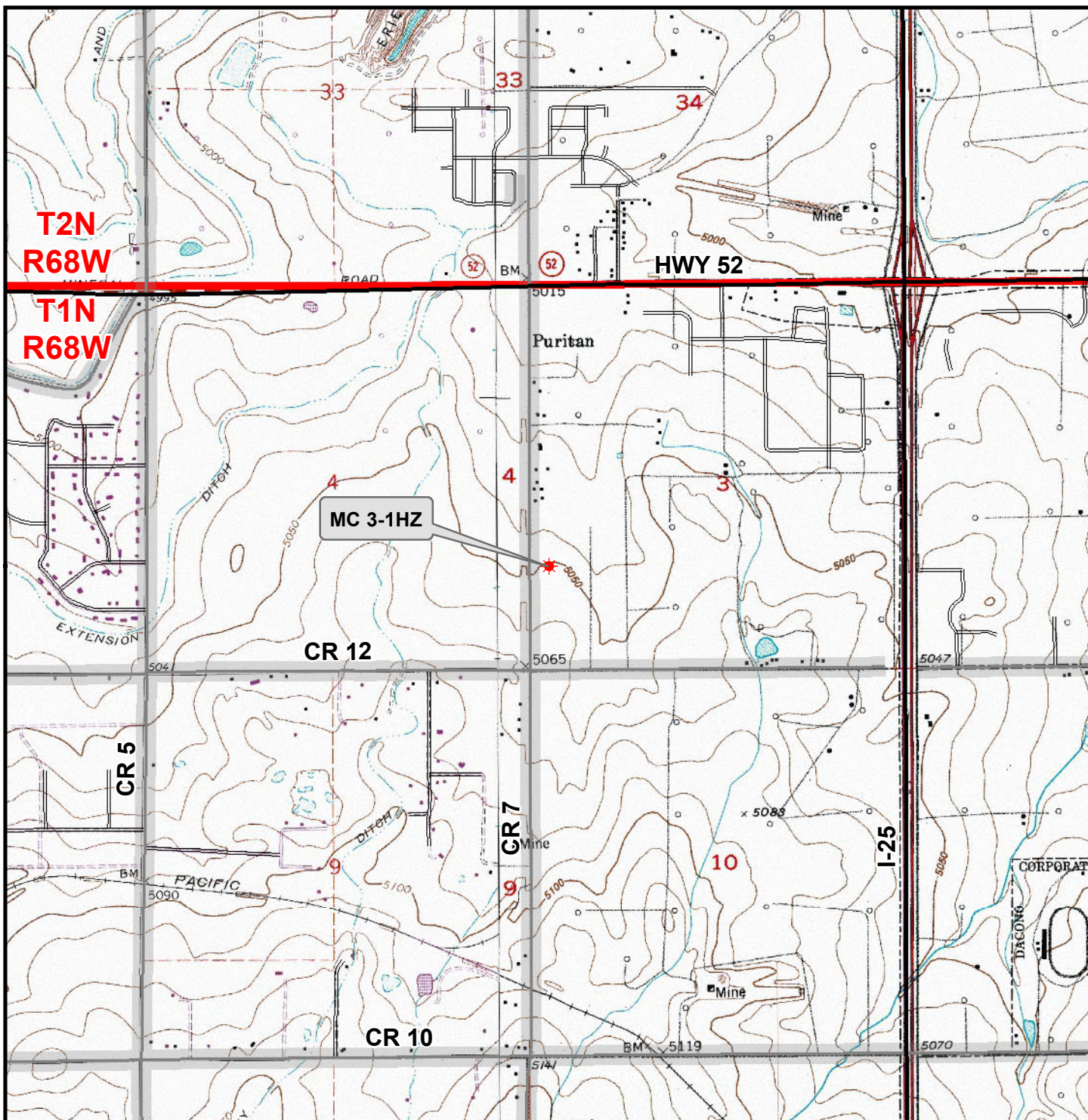
S 89°38'17" W 2662.51' (M)

SE. COR.
SEC. 16, T1N, R68W
FOUND 2" ALUM. CAP
ILLEGIBLE

N 00°22'42" W 2642.44' (M)

N 00°28'28" W 2642.38' (M)

K:\ANADARKO\2014\2014_106_SUMMERFIELD_ERIE_CORPORATE_SEC_10_T1N_R68W\GIS\Maps_ABC\MC 13-3HZ MC 3-1HZ.mxd 8/3/2018 4:16:12 PM



Legend

- ★ Well - Proposed === Road - Primitive - Existing — Road - County - Existing
—— Road - Improved - Existing — Road - Highway - Existing

WELL PAD - MC 13-3HZ

**GENERAL LOCATION MAP
MC 3-1HZ**

**LOCATED IN SECTION 3
T1N, R68W, 6th P.M.
WELD COUNTY, COLORADO**

**Kerr-McGee Oil &
Gas Onshore L.P.**

**1099 18th Street
Denver, Colorado 80202**



CONSULTING, LLC

SHERIDAN OFFICE
1095 Saberton Avenue
Sheridan, Wyoming 82801
Phone 307-674-0609

LOVELAND OFFICE
6706 North Franklin Avenue
Loveland, Colorado 80538
Phone 970-776-4331



SCALE: 1" = 2,000ft

NAD83 CO-Nft

DRAWN: DP

DATE: 6 Aug 2018

REVISED:

DATE: