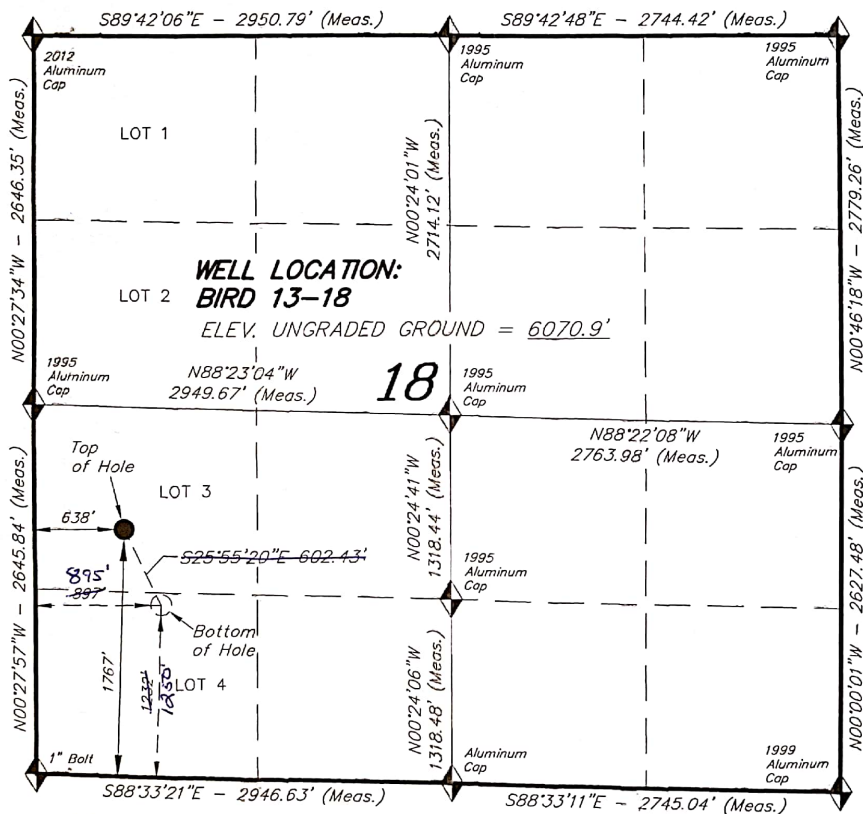


* Modified Well Plat for Sidetrack Well

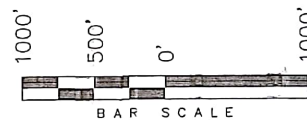
T20S, R69W, 6th P.M.

AUS-TEX EXPLORATION INC



WELL LOCATION, BIRD 13-18, LOCATED AS SHOWN IN THE LOT 3 (NW 1/4 SW 1/4) OF SECTION 18, T20S, R69W, 6th P.M. FREMONT COUNTY, COLORADO.

TARGET BOTTOM HOLE, BIRD 13-18, LOCATED AS SHOWN IN LOT 4 (SW 1/4 SW 1/4) OF SECTION 18, T20S, R69W, 6th P.M. FREMONT COUNTY, COLORADO.



NOTES:

1. Well footages are measured at right angles to the Section Lines.
2. Bearings are based on Global Positioning Satellite Observations referencing Utah Central State Plane Grid North.
3. G.P.S. Operator: C. Stewart, (PDOP) = 1.4

THIS IS TO CERTIFY THAT THE ABOVE PLAT WAS PREPARED FROM FIELD NOTES AND SURVEYS MADE BY ME OR UNDER MY SUPERVISION. THE LOCATION HAS BEEN STAKED ON THE GROUND, SHOWN ON THE PLAT, AND THAT THE SAME ARE TRUE AND CORRECT TO THE BEST OF MY KNOWLEDGE AND BELIEF.

REGISTERED LAND SURVEYOR
REGISTRATION NO. 30125
STATE OF COLORADO

180 NORTH VERNAL AVE. - VERNAL, UTAH 84078
(435) 781-2501

DATE SURVEYED: 06-22-17	SURVEYED BY: C.S.	SHEET 1
DATE DRAWN: 06-23-17	DRAWN BY: F.T.M.	
REVISED: 06-28-17 R.V.G.	SCALE: 1" = 1000'	

BASIS OF ELEV;

U.S.G.S. 7-1/2 min QUAD (Rockvale)

Nad 83 BHL
Lat = 38.3047891
Long = -105.1592436

NAD 83 (SURFACE LOCATION)	
LATITUDE = 38°18'22.36" (38.306211°)	
LONGITUDE = 105°09'36.48" (105.160133°)	
NAD 83 (BOTTOM HOLE LOCATION)	
LATITUDE = 38°18'22.01" (38.304725°)	
LONGITUDE = 105°09'33.10" (105.160217°)	