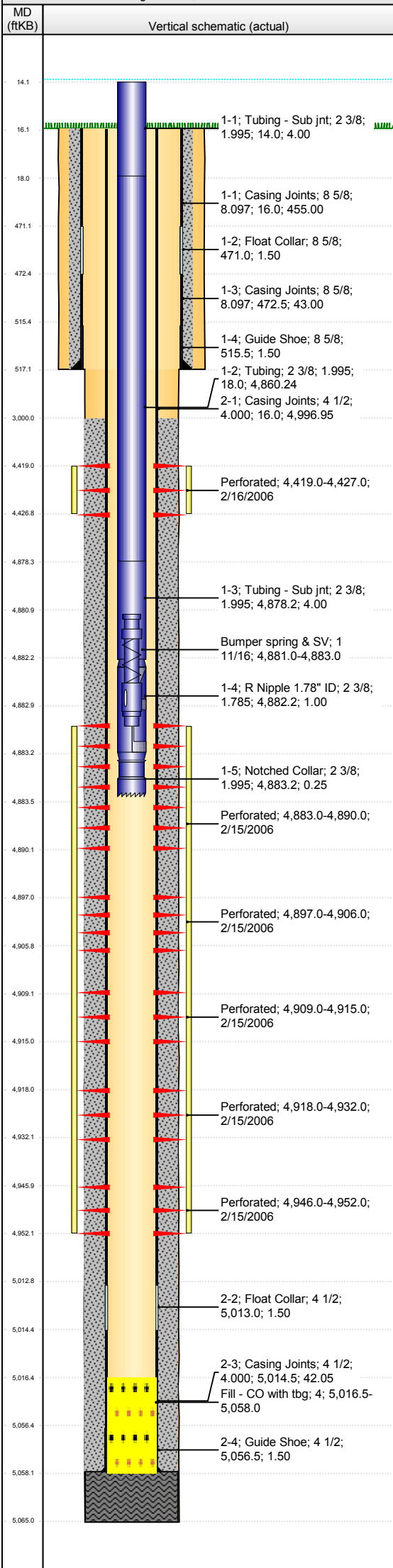




Lease Review All - CR
Well Name: LION GOVERNMENT 23-36

API Number 0508107263	WPC ID 1CO073822	Well Permit Number 20054181	Field Name Hiawatha West	County Moffat	State CO
Well Configuration Type Vertical	Orig KB Elv (ft) 6,926.00	Ground Elevation (ft) 6,910.00	Casing Flange Elevation (ft)	Tubing Head Elevation (ft)	Total Depth (ftKB) 5,065.0
Original Spud Date 1/8/2006	Completion Date 3/6/2006	Asset Group Central Rockies	Responsible Engineer Jared Huckabee	N/S Dist (ft) 1,990.0	N/S Ref FSL
				E/W Dist (ft) 1,826.0	E/W Ref FWL
Lot	Quarter 1 NE	Quarter 2 SW	Quarter 3	Quarter 4	Section 36
			Section Suffix	Section Type	Township 12 N
					Township N/S Dir 101 W
					Range 101 W
					Meridian

Vertical - Original Hole, 10/6/2015 12:05:00 PM



Wellbore Sections										
Section Des		Wellbore Name		Start Date	Size (in)	Act Top (ftKB)	Act Btm (ftKB)			
Surface		Original Hole		1/8/2006	12 1/4	16.0	517.0			
Production		Original Hole		1/9/2006	7 7/8	517.0	5,065.0			
Surface Casing, 517.0ftKB										
OD (in)	ID (in)	Wt (lb/ft)	Grade	Top (ftKB)	Btm (ftKB)	Len (ft)	Item Des			
8 5/8	8.097	24.00	J-55	16.0	471.0	455.00	Casing Joints			
8 5/8				471.0	472.5	1.50	Float Collar			
8 5/8	8.097	24.00	J-55	472.5	515.5	43.00	Casing Joints			
8 5/8				515.5	517.0	1.50	Guide Shoe			
Production Casing, 5,058.0ftKB										
OD (in)	ID (in)	Wt (lb/ft)	Grade	Top (ftKB)	Btm (ftKB)	Len (ft)	Item Des			
4 1/2	4.000	11.60	N-80	16.0	5,013.0	4,996.95	Casing Joints			
4 1/2				5,013.0	5,014.5	1.50	Float Collar			
4 1/2	4.000	11.60	N-80	5,014.5	5,056.5	42.05	Casing Joints			
4 1/2				5,056.5	5,058.0	1.50	Guide Shoe			
Cement Stages										
Des		Pump Start Date	Drill Out Date	Top (ftKB)	Btm (ftKB)	Top Meas Meth				
Surface Casing Cement		1/8/2006		16.0	517.0					
Production Casing Cement		2/9/2006		3,000.0	5,058.0					
Cement Below Shoe		2/9/2006		5,058.0	5,065.0					
Perforations										
Type of Hole		Date	Top (ftKB)	Btm (ftKB)	Zone					
Perforated		2/16/2006	4,419.0	4,427.0	Upr Ft Union, Original Hole					
Perforated		2/15/2006	4,883.0	4,890.0	Mid Lewis, Original Hole					
Perforated		2/15/2006	4,897.0	4,906.0	Mid Lewis, Original Hole					
Perforated		2/15/2006	4,909.0	4,915.0	Mid Lewis, Original Hole					
Perforated		2/15/2006	4,918.0	4,932.0	Mid Lewis, Original Hole					
Perforated		2/15/2006	4,946.0	4,952.0	Mid Lewis, Original Hole					
Stim/Treat Stages										
Stage Type		Start Date	Top (ftKB)	Btm (ftKB)	Stim/Treat Fluid		Vol Clean Pump (bbl)			
Sand		2/16/2006	4,883.0	4,952.0	128,467# 20/40 white, sand					
Sand		2/16/2006	4,419.0	4,427.0	44,058# 20/40 white, sand					
Tubing Strings										
Tubing - Production set at 4,883.5ftKB on 2/22/2006 12:00										
Set Depth (ftKB)		Comment			Run Date		Pull Date			
4,883.5					2/22/2006					
Item Des			OD (in)	ID (in)	Wt (lb/ft)	Grade	Jts	Len (ft)	Top (ftKB)	Btm (ftKB)
Tubing - Sub jnt			2 3/8	1.995	4.70	J-55	1	4.00	14.0	18.0
Tubing			2 3/8	1.995	4.70	J-55	154	4,860.24	18.0	4,878.2
Tubing - Sub jnt			2 3/8	1.995	4.70	J-55	1	4.00	4,878.2	4,882.2
R Nipple 1.78" ID			2 3/8	1.785			1	1.00	4,882.2	4,883.2
Notched Collar			2 3/8	1.995	4.70	J-55	1	0.25	4,883.2	4,883.5
Rod Strings										
<des> on <dttrun>				Run Date		Pull Date				
Rod Description				Run Date		Pull Date				
Item Des			OD (in)	Grade	Jts	Len (ft)	Top (ftKB)	Btm (ftKB)		
Other Strings										
Set Depth (ftKB)		Comment			Run Date		Pull Date			
Item Des			OD (in)	ID (in)	Len (ft)	Top (ftKB)	Btm (ftKB)			
Other In Hole										
Wellbore		Des	OD (in)	ID (in)	Run Date	Top (ftKB)	Btm (ftKB)			
Bottom Hole Cores										
Date		Core #	Top (ftKB)	Btm (ftKB)	Recov (ft)					