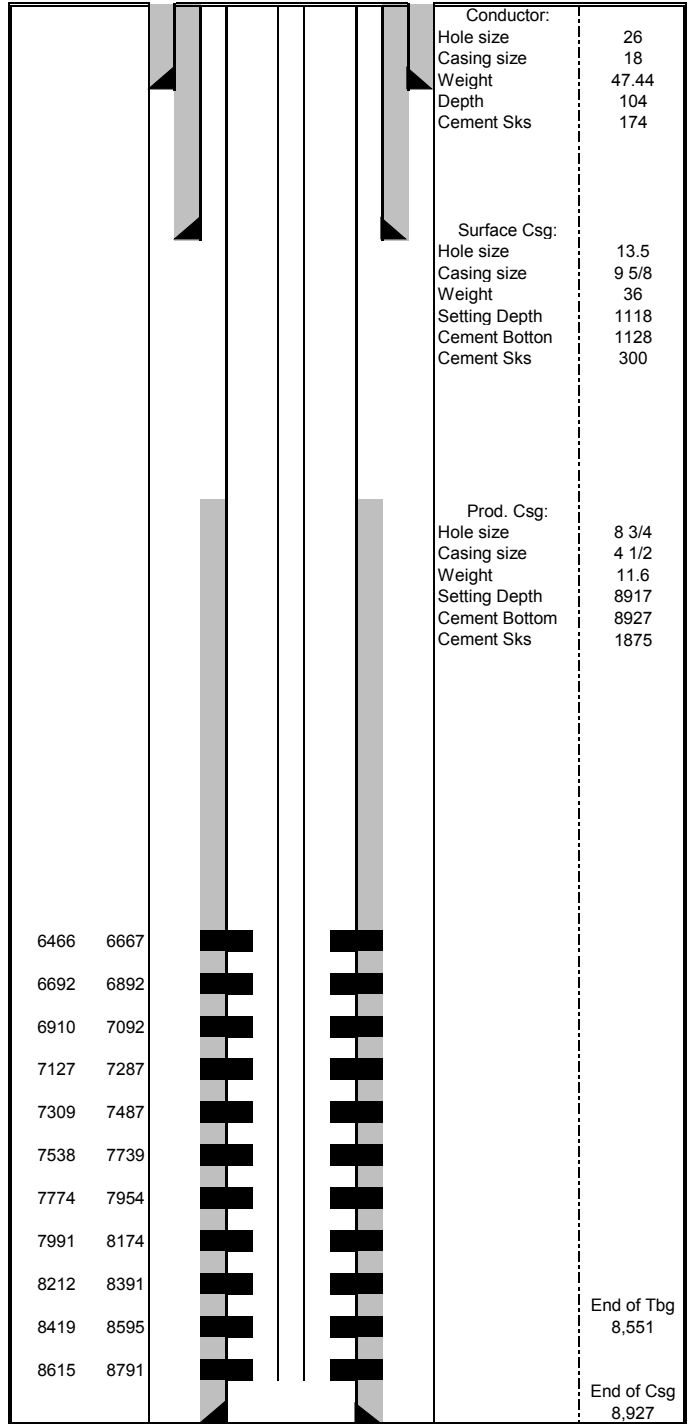


PA 612-26 Wellbore Diagram

Well	Pad	API	
PA 612-26	PA 23-26	05-045-23712	
Diagram Date	Spud Date	First Production Date	
10/25/2018	7/20/2018	10/15/2018	
Location	Meridian	County	
NESW	6th	Garfield	
Top Perf	Bottom Perf	Current EOT	
6,466	8,791	8,551	
Bottom Surf Csg	Bottom Prod Csg	TOC	
1,128	8,927	1,590	
TD	TVD	Elevation	
8,927	8,308	5,637	
PBTD	PBTVD	KB	
8,886	8,267	5,661	

Formation Tops	
Wasatch	
Wasatch G	2,678
Mesaverde	5,265
Ohio Creek	5,265
Williams Fork	5,241
Cameo	8,554
Rollins	8,855
Cozzette	
Corcoran	
Sego	



Conductor:	
Hole size	26
Casing size	18
Weight	47.44
Depth	104
Cement Sks	174

Surface Csg:	
Hole size	13.5
Casing size	9 5/8
Weight	36
Setting Depth	1118
Cement Bottom	1128
Cement Sks	300

Prod. Csg:	
Hole size	8 3/4
Casing size	4 1/2
Weight	11.6
Setting Depth	8917
Cement Bottom	8927
Cement Sks	1875