



Great Western Operating Company, LLC

SURFACE POST JOB REPORT

Marcus LD 11-371HNX 05-123-45383
S:34 T:1N R:67W Weld CO

CallSheet #: 1381
Proposal #: 13979



SURFACE Post Job Report

Attention: Mr. Matt Mount | (303) 398-0373 | mmount@gwogco.com
Great Western Operating Company, LLC
1801 Broadway, Suite 500 | Denver, CO 80202

Dear Mr. Mount,

Thank you for the opportunity to provide cementing services on this well. BJ Services strives to achieve complete customer satisfaction. If you have any questions regarding the services or data provided, please contact BJ Services at any time.

Sincerely,

Jason Creel

Field Engineer | (307) 256-0306 | Jason.Creel@BJSERVICES.COM

Field Office 1716 East Allison Rd., Cheyenne WY, 82007
Phone: (307) 638-5585

Sales Office 999 18th St. Suite 1200 Denver, CO 80202
Phone: (281) 408-2361



Table of Contents

1 Job Details & Summary 3

 1.1 Geometry 3

 1.2 Equipment / People 3

 1.3 Timing 3

 1.4 General Job Information 3

 1.5 Job Details 3

 1.6 Job Details (cont.) 3

 1.7 Circulation 3

 1.8 Job Execution Information 4

 1.9 Job Fluid Details 4

2 Job Logs 5

3 Pump Diagrams 6

1 Job Details & Summary

1.1 Geometry

Type	Function	OD (in)	ID (in)	Weight (lb/ft)	Thread	Top (ft)	Bottom (ft)	Excess (%)
Open Hole	Outer	n/a	13.5	n/a	n/a	0	1734	25
Casing	Inner	9.625	8.921	36	n/a	0	1734	0

1.2 Equipment / People

Unit Type	Unit	Employee #1	Mileage
Cement Pump	C938	Nepgen, AJ	180
Light Duty Pickups	3	Staples, Anthony	180
Bulk Trailer	PPC41312	Soto Jr., Ruben	180
Bulk Trailer	PPC41314	Martinez, Michael	180

1.3 Timing

Event	Date/Time
Call Out	9/19/2017 13:00
Depart Facility	9/19/2017 13:00
On Location	9/19/2017 19:00
Rig Up Iron	9/19/2017 21:10
Job Started	9/20/2017 00:15
Job Completed	9/20/2017 01:52
Rig Down Iron	9/20/2017 02:00
Depart Location	9/20/2017 03:00

1.4 General Job Information

Metrics	Value
Well Fluid Density	8.5 lb/gal
Well Fluid Type	WBM
Rig Circulation Vol	200 bbls
Rig Circulation Time	2 hours
Calculated Displacement	129.7 bbls
Actual Displacement	130 bbls
Total Spacer to Surface	20 bbls
Total CMT to Surface	20 bbls
Well Topped Out	No

1.5 Job Details

Metrics	Value
Flare Prior to Job	NO
Flare During Job	NO
Flare at End of Job	NO
Well Full Prior to Job	Yes
Well Fluid Density Into Well	8.5 lb/gal
Well Fluid Density Out of Well	8.5 lb/gal

1.6 Job Details (cont.)

Metrics	Value
BHCT	88 °F
BHST	109 °F

1.7 Circulation

Lost Circulation Experienced
NO



1.8 Job Execution Information

Job	Fluid	Product	Function	Density (lb/gal)	Yield (ft ³ /sk)	Water Rq. (gal/sk)	Water Rq. (gal/bbl)	Volume (sks)	Volume (bbl)	Top (ft)
1	1	Water	Flush	8.33			42.00		20.00	0
1	2	S100-22	Primary	14.50	1.39	6.76		762.00	188.42	0
1	3	Water	Displacement Final	8.33			42.00		130.00	0

1.9 Job Fluid Details

Job	Fluid	Type	Fluid	Product	Function	Conc.	Uom	Start (gal)	End (gal)	Used (gal)
1	2	Primary	S100-22	AC3-10	Cement	100.00	%			
1	2	Primary	S100-22	ADF-20	Defoamer	0.03	gal/sk	0	0	0



2 Job Logs

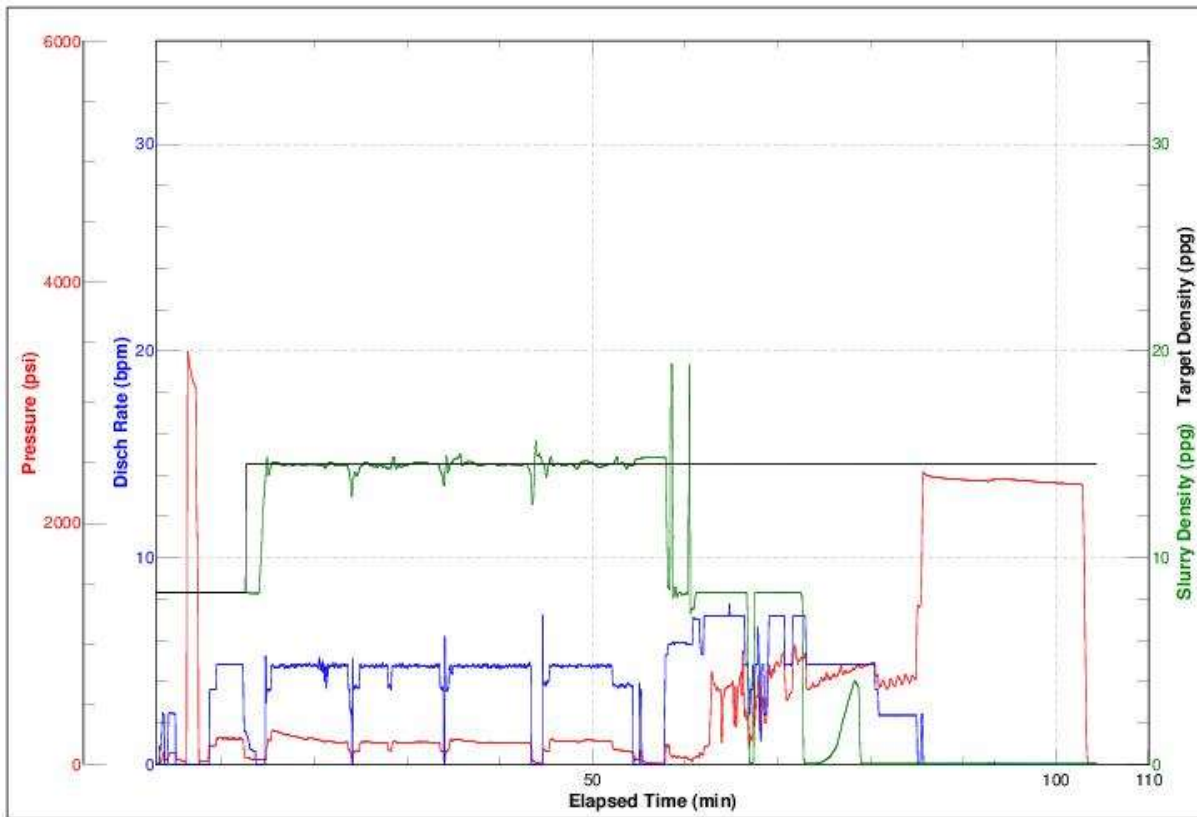
Line	Event	Date (MM/DD/YY)	Time (HH:MM)	Density (lb/gal)	Pump Rate (bpm)	Pump Volume (bbls)	Pipe Pressure (psi)	Comment
1	CALL OUT	9/19/2017	13:00					DISPATCH CALLED BY COMPANY REP
2	LEAVE YARD	9/19/2017	13:30					CONVOY TO LOCATION
3	ARRIVE ON LOCATION	9/19/2017	19:00					SPOKE TO COMPANY REP
4	SAFETY MEETING	9/19/2017	21:00					TO SPOT EQUIPMENT / RIG UP
5	SPOT EQUIPMENT	9/19/2017	21:10					NEAR WELLHEAD FOR TREATING
6	RIG UP	9/19/2017	21:15					CEMENT AND WATER LINES
7	SAFETY MEETING	9/20/2017	00:00					ALL PERSONNEL INVOLVED
8	FILL P & L	9/20/2017	00:15	8.3	4	2		CHARGE ALL LINES FOR TREATMENT
9	PRESSURE TEST	9/20/2017	00:17	8.3	0	0	3419	CHECK LINES FOR LEAKS
10	PREFLUSH	9/20/2017	00:19	8.3	5	20	222	DYED WATER
11	BATCH UP	9/20/2017	00:23	14.5	0	0	0	14.5PPG, 1.39 FT3/SK, 6.76 GAL/SK
12	LEAD CEMENT	9/20/2017	00:25	14.5	5	188		762 SKS, 122.7 BBLS OF H2O
13	SHUT DOWN/DROP PLUG	9/20/2017	01:06					DROP TOP PLUG/ VISUAL CONFIRMATION
14	DISPLACE	9/20/2017	01:08	8.3	7	130		DISPLACE CEMENT FROM CSG. 20 BBLS CMT TO SURF.
15	BUMP PLUG	9/20/2017	01:36	8.3			1345	LAND TOP PLUG
16	CASING TEST	9/20/2017	01:37	8.3			2420	HOLD TEST FOR 15 MINS
17	BLEED OFF/CHECK FLOAT	9/20/2017	01:52					FLOAT HOLDING
18	RIG DOWN	9/20/2017	02:00					DISCONNECT TREATING LINES
19	LEAVE LOCATION	9/20/2017	03:00					CONVOY TO YARD



3 Pump Diagrams



JobMaster Program Version 4.02C1
Job Number: 1381
Customer: Great Western
Well Name: Marcus LD 11-371HNX



BJ Services

Job Start: Wednesday, September 20, 2017