



Great Western Operating Company, LLC

SURFACE POST JOB REPORT

Marcus LD 11-373HNX 05-123-45380
S:34 T:1N R:67W Weld CO

CallSheet #: 1378
Proposal #: 13978



SURFACE Post Job Report

Attention: Mr. Matt Mount | (303) 398-0373 | mmount@gwogco.com
Great Western Operating Company, LLC
1801 Broadway, Suite 500 | Denver, CO 80202

Dear Mr. Mount,

Thank you for the opportunity to provide cementing services on this well. BJ Services strives to achieve complete customer satisfaction. If you have any questions regarding the services or data provided, please contact BJ Services at any time.

Sincerely,

Jason Creel

Field Engineer | (307) 256-0306 | Jason.Creel@BJSERVICES.COM

Field Office 1716 East Allison Rd., Cheyenne WY, 82007
Phone: (307) 638-5585

Sales Office 999 18th St. Suite 1200 Denver, CO 80202
Phone: (281) 408-2361



Table of Contents

1 Job Details & Summary 3

 1.1 Geometry 3

 1.2 Equipment / People 3

 1.3 Timing 3

 1.4 General Job Information 3

 1.5 Job Details 3

 1.6 Job Details (cont.) 3

 1.7 Circulation 3

 1.8 Job Execution Information 4

 1.9 Job Fluid Details 4

2 Job Logs 4

3 Pump Diagrams 5

1 Job Details & Summary

1.1 Geometry

Type	Function	OD (in)	ID (in)	Weight (lb/ft)	Thread	Top (ft)	Bottom (ft)	Excess (%)
Open Hole	Outer	n/a	13.5	n/a	n/a	0	1733	25
Casing	Inner	9.625	8.921	36	n/a	0	1733	0

1.2 Equipment / People

Unit Type	Unit	Employee #1	Mileage
Cement Pump	C938	Nepgen, AJ	184
Light Duty Pickups	3	Staples, Anthony	184
Bulk Trailer	E-527	Martinez, Michael	184
Bulk Trailer	E696	Soto Jr., Ruben	184

1.3 Timing

Event	Date/Time
Call Out	9/18/2017 10:00
Depart Facility	9/18/2017 11:00
On Location	9/18/2017 17:00
Rig Up Iron	9/18/2017 17:15
Job Started	9/18/2017 19:45
Job Completed	9/18/2017 21:33
Rig Down Iron	9/18/2017 21:38
Depart Location	9/18/2017 22:30

1.4 General Job Information

Metrics	Value
Well Fluid Density	8.5 lb/gal
Well Fluid Type	WBM
Rig Circulation Vol	125 bbls
Rig Circulation Time	1.5 hours
Calculated Displacement	129.7 bbls
Actual Displacement	130 bbls
Total Spacer to Surface	20 bbls
Total CMT to Surface	20 bbls
Well Topped Out	No

1.5 Job Details

Metrics	Value
Flare Prior to Job	No
Flare During Job	No
Flare at End of Job	No
Well Full Prior to Job	Yes
Well Fluid Density Into Well	8.5 lb/gal
Well Fluid Density Out of Well	8.5 lb/gal

1.6 Job Details (cont.)

Metrics	Value
BHCT	88 °F
BHST	109 °F

1.7 Circulation

Lost Circulation Experienced
No



1.8 Job Execution Information

Job	Fluid	Product	Function	Density (lb/gal)	Yield (ft ³ /sk)	Water Rq. (gal/sk)	Water Rq. (gal/bbl)	Volume (sk)	Volume (bbl)
1	1	Water	Flush	8.33			42.00		20.00
1	2	S100-22	Primary	14.50	1.39	6.76		762.00	188.42
1	3	Water	Displacement Final	8.33			42.00		129.00

1.9 Job Fluid Details

Job	Fluid	Type	Fluid	Product	Function	Conc.	Uom
1	2	Primary	S100-22	AC3-10	Cement	100.00	%
1	2	Primary	S100-22	ADF-20	Defoamer	0.03	gal/sk

2 Job Logs

Line	Event	Date (MM/DD/YY)	Time (HH:MM)	Density (lb/gal)	Pump Rate (bpm)	Pump Volume (bbls)	Pipe Pressure (psi)	Comment
1	Yard Call	9/18/2017	10:00					
2	Leave Yard	9/18/2017	11:00					Staged at Truck Stop Close to Location
3	Arrive on Location	9/18/2017	17:00					Rig Running Casing, Discussed Job With Customer
4	Spot Trucks	9/18/2017	17:15					
5	Pre-Rig Up Safety Meeting	9/18/2017	17:30					Held STEACS With Crew and Assigned Tasks
6	Rig Up	9/18/2017	17:45					Got Job Rigged Up
7	Pre-Job Safety Meeting	9/18/2017	19:15					Held Briefing with all Personnel
8	Rig Up Head	9/18/2017	19:30					
9	Load Lines	9/18/2017	19:45	8.34	2	2	42	
10	Pressure Test	9/18/2017	19:50	8.34			4450	Tested Iron
11	H2O Spacer	9/18/2017	19:52	8.34	5	20	42	Fresh Water + Dye
12	Cement	9/18/2017	19:56	14.5	4.7	170	182	Batch, Weigh, and Pump 762 sks of 14.5# Primary CMT (188.4) Bbls
13	Cement	9/18/2017	20:41	14.5	3.6	18	100	
14	Shut Down Wash Up	9/18/2017	20:45	8.34				Wash Up Mixing Tub
15	Drop Plug	9/18/2017	20:51	8.34				Plug Dropped and verified
16	Displace	9/18/2017	20:52	8.34	6.8	110	720	
17	Displace	9/18/2017	21:05	8.34	5.6	12	670	
18	Displace	9/18/2017	21:16	8.34	2.6	8	600	Slowed Rate Prior to Bumping
19	Bump Plug	9/18/2017	21:17	8.34			1250	Bumped Plugged @ 130Bbls, 20Bbls Cement to Surface
20	Casing Test	9/18/2017	21:18	8.34			2436	15 min Casing Test
21	Check Floats	9/18/2017	21:33	8.34				Bled Off psi, 1.5 Bbls Back

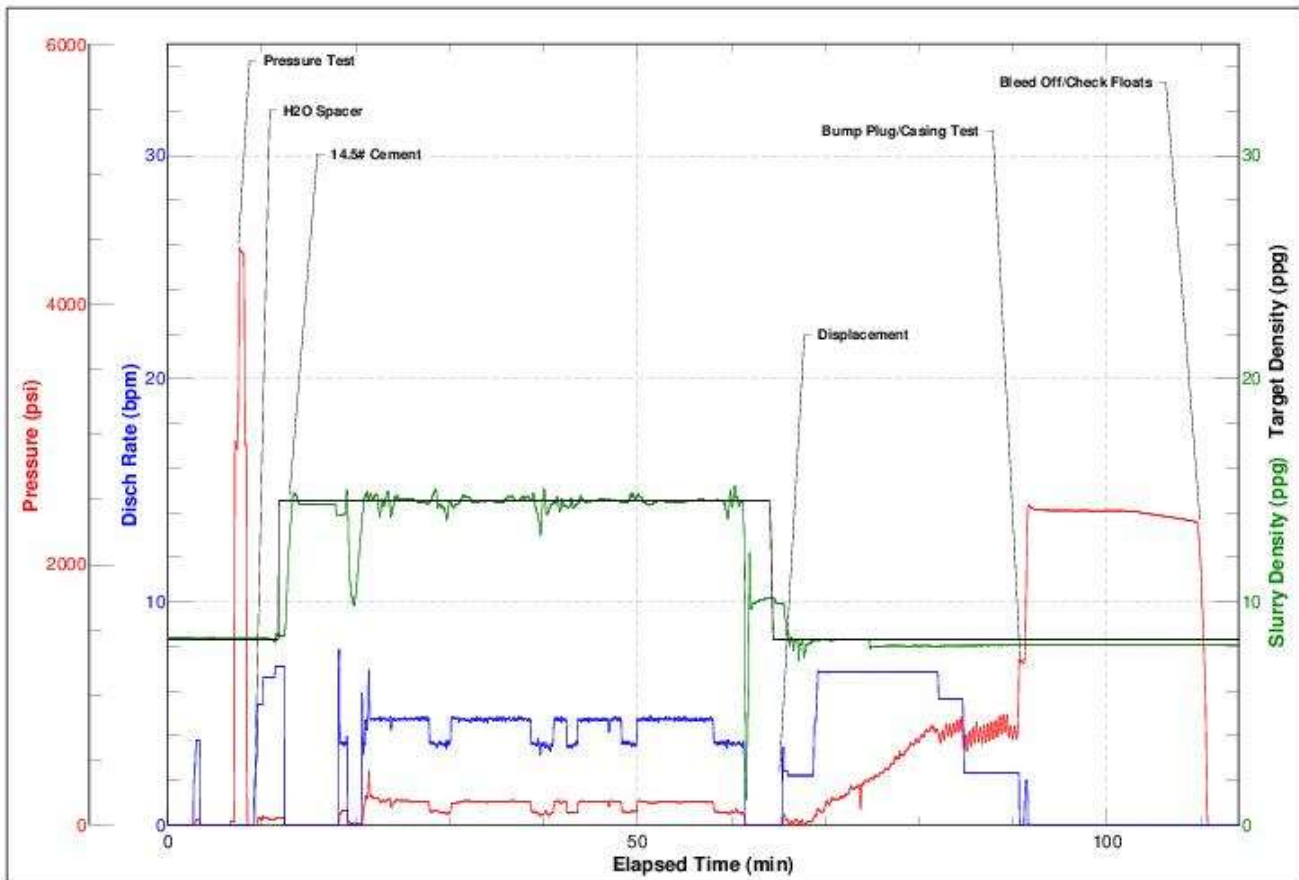


22	Pre-Rig Down Meeting	9/18/2017	21:38					Held Meeting With Crew
23	Leave Location	9/18/2017	22:30					

3 Pump Diagrams



JobMaster Program Version 4.02C1
Job Number: 1378
Customer: Great Western
Well Name: Marcus LD 11-373HNX



BJ Services

Job Start: Monday, September 18, 2017