



Great Western Operating Company, LLC

SURFACE POST JOB REPORT

Marcus LD 11-376HNX 05-123-45385
S:34 T:1N R:67W Weld CO

CallSheet #: 1372
Proposal #: 13977



SURFACE Post Job Report

Attention: Mr. Matt Mount | (303) 398-0373 | mmount@gwogco.com
Great Western Operating Company, LLC
1801 Broadway, Suite 500 | Denver, CO 80202

Dear Mr. Mount,

Thank you for the opportunity to provide cementing services on this well. BJ Services strives to achieve complete customer satisfaction. If you have any questions regarding the services or data provided, please contact BJ Services at any time.

Sincerely,

Oscar Medrano

Technical Specialist-II | (307) 996-6222 | Oscar.Medrano@bjservices.com

Field Office 1716 East Allison Rd., Cheyenne WY, 82007
Phone: (307) 638-5585

Sales Office 999 18th St. Suite 1200 Denver, CO 80202
Phone: (281) 408-2361



Table of Contents

1 Job Details & Summary 3

 1.1 Geometry 3

 1.2 Equipment / People 3

 1.3 Timing 3

 1.4 General Job Information 3

 1.5 Job Details 3

 1.6 Job Details (cont.) 3

 1.7 Circulation 4

 1.8 Job Execution Information 4

 1.9 Job Fluid Details 4

2 Job Logs 5

3 Pump Diagrams 6

1 Job Details & Summary

1.1 Geometry

Type	Function	OD (in)	ID (in)	Weight (lb/ft)	Thread	Top (ft)	Bottom (ft)	Excess (%)
Open Hole	Outer	n/a	13.5	n/a	n/a	0	1737	25
Casing	Inner	9.625	8.921	36	n/a	0	1737	0

1.2 Equipment / People

Unit Type	Unit	Employee #1	Mileage
Cement Pump	C938	Nepgen, AJ	180
Light Duty Pickups	3	Staples, Anthony	180
Bulk Trailer	PPC41312	Soto Jr., Ruben	90
Bulk Trailer	PPC41314	Martinez, Michael	90

1.3 Timing

Event	Date/Time
Call Out	9/17/2017 15:00
Depart Facility	9/17/2017 15:30
On Location	9/17/2017 17:30
Rig Up Iron	9/17/2017 23:00
Job Started	9/18/2017 01:09
Job Completed	9/18/2017 03:00
Rig Down Iron	9/18/2017 03:15
Depart Location	9/18/2017 04:30

1.4 General Job Information

Metrics	Value
Well Fluid Density	8.6 lb/gal
Well Fluid Type	WBM
Rig Circulation Vol	200 bbls
Rig Circulation Time	2 hours
Calculated Displacement	130 bbls
Actual Displacement	130 bbls
Total Spacer to Surface	20 bbls
Total CMT to Surface	30 bbls
Well Topped Out	No

1.5 Job Details

Metrics	Value
Flare Prior to Job	No
Flare During Job	No
Flare at End of Job	No
Well Full Prior to Job	Yes
Well Fluid Density Into Well	8.4 lb/gal
Well Fluid Density Out of Well	8.4 lb/gal

1.6 Job Details (cont.)

Metrics	Value
BHCT	88 °F
BHST	109 °F



1.7 Circulation

Lost Circulation Experienced
No

1.8 Job Execution Information

Job	Fluid	Product	Function	Density (lb/gal)	Yield (ft ³ /sk)	Water Rq. (gal/sk)	Water Rq. (gal/bbl)	Volume (sk)	Volume (bbl)	Top (ft)
1	1	Water	Flush	8.33			42.00		20.00	0
1	2	S100-22	Primary	14.50	1.39	6.76		762.00	190.00	0
1	3	Water	DisplacementFinal	8.33			42.00		130.00	0

1.9 Job Fluid Details

Job	Fluid	Type	Fluid	Product	Function	Conc.	Uom
1	2	Primary	S100-22	AC3-10	Cement	100.00	%
1	2	Primary	S100-22	ADF-20	Defoamer	0.03	gal/sk



2 Job Logs

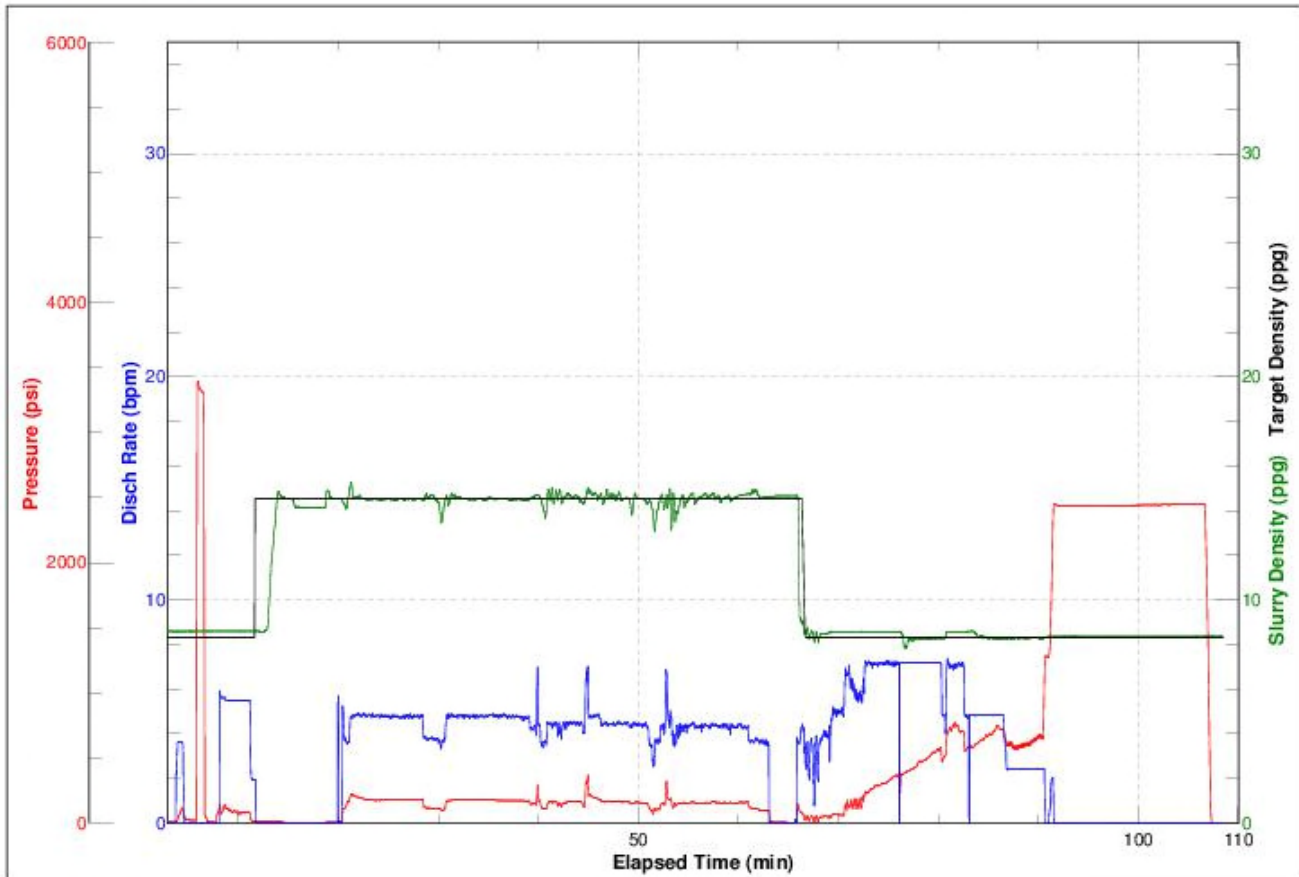
Line	Event	Date (MM/DD/YY)	Time (HH:MM)	Density (lb/gal)	Pump Rate (bpm)	Pump Volume (bbls)	Pipe Pressure (psi)	Comment
1	CALL OUT	9/17/2017	15:00					CUSTOMER CALL DISPATCH
2	LEAVE YARD	9/17/2017	15:30					PRETRIP AND CONVOY OUT
3	ARRIVE ON LOCATION	9/17/2017	17:30					SPOKE TO COMPANY MAN
4	RIG UP SAFETY MEETING	9/18/2017	00:00					BJ CREW SAFE TO RIG UP
5	SPOT EQUIPMENT	9/18/2017	00:15					SPOTTED EQUIPMENT NEAR RIG
6	RIG UP	9/18/2017	00:30					CONNECTED TREATING LINES
7	JOB SAFETY MEETING	9/18/2017	00:45					ALL PERSONNEL INVOLVED
8	FILL P&L	9/18/2017	01:09	8.33	4	2	40	H2O FILLED TREATING PUMPS AND LINES
9	PRESSURE TEST	9/18/2017	01:11	8.33			3400	CHECKING LINES FOR LEAKS
10	PRE FLUSH	9/18/2017	01:13	8.33	5	20	60	DYED WATER
11	BATCH UP	9/18/2017	01:18	14.5				1.39 FT3/SK, 6.76 GAL/SK, 188.4 SKS
12	LEAD CEMENT	9/18/2017	01:24	14.5	5	190	195	188.4 SKS, 122.7 BBLS H2O
13	SHUT DOWN / DROP PLUG	9/18/2017	02:10					DROP TOP WIPER PLUG
14	DISPLACE	9/18/2017	02:13	8.33	7		303	DISPLACING CEMENT
15	BUMP PLUG	9/18/2017	02:37	8.33	2	130	1278	PLUG LANDED
16	CASING TEST	9/18/2017	02:38	8.33			2448	CASING INTEGRITY TEST
17	BLEED OFF/ CHECK FLOAT	9/18/2017	02:53					FLOAT HOLDING. 30 BBLS CMT TO SURFACE
18	SHUT DOWN	9/18/2017	02:55					PUMP OFF LINE
19	SAFETY MEETING	9/18/2017	03:00					RIG DOWN MEETING FOR BJ CREW
20	RIG DOWN	9/18/2017	03:15					BULK, WATER, AND TREATING LINES
21	LEAVE LOCATION	9/18/2017	04:30					CONVOY TO YARD



3 Pump Diagrams



JobMaster Program Version 4.02C1
Job Number: 1358
Customer: Great Western
Well Name: Marcus LD 11-378HNX



BJ Services

Job Start: Monday, September 18, 2017