



Great Western Operating Company, LLC

SURFACE POST JOB REPORT

Marcus LD 11-378HNX 05-123-45387
S:34 T:1N R:67W Weld CO

CallSheet #: 1358
Proposal #: 13976



SURFACE Post Job Report

Attention: Mr. Matt Mount | (303) 398-0373 | mmount@gwogco.com
Great Western Operating Company, LLC
1801 Broadway, Suite 500 | Denver, CO 80202

Dear Mr. Mount,

Thank you for the opportunity to provide cementing services on this well. BJ Services strives to achieve complete customer satisfaction. If you have any questions regarding the services or data provided, please contact BJ Services at any time.

Sincerely,

Oscar Medrano

Technical Specialist-II | (307) 996-6222 | Oscar.Medrano@bjservices.com

Field Office 1716 East Allison Rd., Cheyenne WY, 82007
Phone: (307) 638-5585

Sales Office 999 18th St. Suite 1200 Denver, CO 80202
Phone: (281) 408-2361



Table of Contents

1 Job Details & Summary 3

 1.1 Geometry 3

 1.2 Equipment / People 3

 1.3 Timing 3

 1.4 General Job Information 3

 1.5 Job Details 3

 1.6 Job Details (cont.) 3

 1.7 Circulation 4

 1.8 Job Execution Information 4

 1.9 Job Fluid Details 4

2 Job Logs 5

3 Pump Diagrams 6

1 Job Details & Summary

1.1 Geometry

Type	Function	OD (in)	ID (in)	Weight (lb/ft)	Thread	Top (ft)	Bottom (ft)	Excess (%)
Open Hole	Outer	n/a	13.5	n/a	n/a	0	1735	25
Casing	Inner	9.625	8.921	36	n/a	0	1735	0

1.2 Equipment / People

Unit Type	Unit	Employee #1	Mileage
Cement Pump	C938	Nepgen, AJ	182
Light Duty Pickups	3	Staples, Anthony	182
Bulk Trailer	E-527	Martinez, Michael	182
Bulk Trailer	E696	Soto Jr., Ruben	

1.3 Timing

Event	Date/Time
Call Out	9/16/2017 18:00
Depart Facility	9/16/2017 19:00
On Location	9/16/2017 22:30
Rig Up Iron	9/17/2017 23:00
Job Started	9/17/2017 05:04
Job Completed	9/17/2017 07:26
Rig Down Iron	9/17/2017 07:28
Depart Location	9/17/2017 08:00

1.4 General Job Information

Metrics	Value
Well Fluid Density	8.4 lb/gal
Well Fluid Type	WBM
Rig Circulation Vol	125 bbls
Rig Circulation Time	1.5 hours
Calculated Displacement	129.99 bbls
Actual Displacement	130 bbls
Total Spacer to Surface	20 bbls
Total CMT to Surface	10 bbls
Well Topped Out	No

1.5 Job Details

Metrics	Value
Flare Prior to Job	No
Flare During Job	No
Flare at End of Job	No
Well Full Prior to Job	Yes
Well Fluid Density Into Well	8.5 lb/gal
Well Fluid Density Out of Well	8.5 lb/gal

1.6 Job Details (cont.)

Metrics	Value
BHCT	88 °F
BHST	109 °F



1.7 Circulation

Lost Circulation Experienced
No

1.8 Job Execution Information

Job	Fluid	Product	Function	Density (lb/gal)	Yield (ft ³ /sk)	Water Rq. (gal/sk)	Water Rq. (gal/bbl)	Volume (sk)	Volume (bbl)	Top (ft)
1	1	Water	Flush	8.33			42.00		20.00	0
1	2	S100-22	Primary	14.50	1.39	6.76		762.00	188.42	0
1	3	Water	DisplacementFinal	8.33			42.00		129.00	0

1.9 Job Fluid Details

Job	Fluid	Type	Fluid	Product	Function	Conc.	Uom
1	2	Primary	S100-22	AC3-10	Cement	100.00	%
1	2	Primary	S100-22	ADF-20	Defoamer	0.03	gal/sk



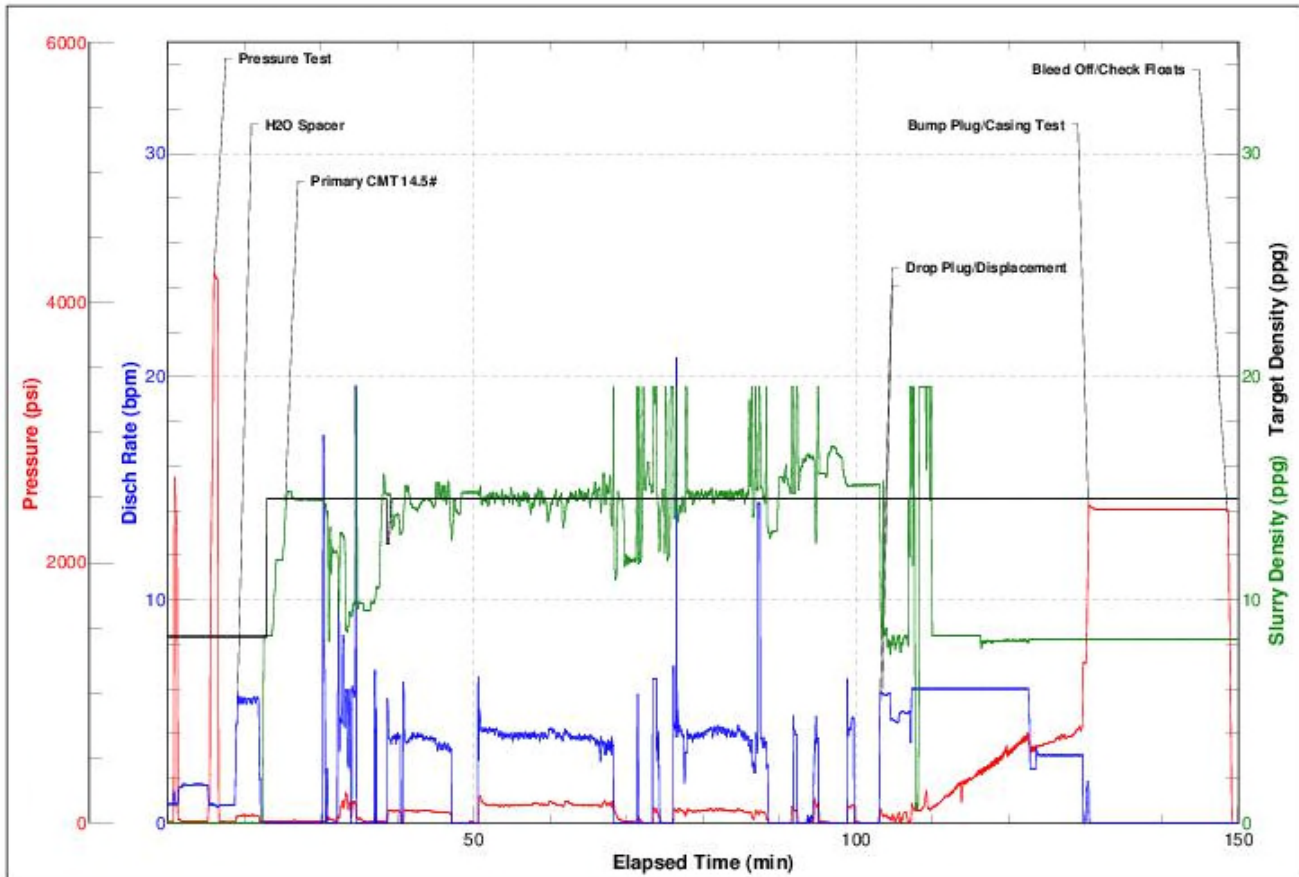
2 Job Logs

Line	Event	Date (MM/DD/YY)	Time (HH:MM)	Density (lb/gal)	Pump Rate (bpm)	Pump Volume (bbls)	Pipe Pressure (psi)	Comment
1	Call Out	9/16/2017	18:00					
2	Leave Yard	9/16/2017	19:00					
3	Arrive on Location	9/16/2017	21:00					Rig Coming Out of the Hole With DP
4	Spot Trucks	9/16/2017	23:30					
5	Pre-Rig Up Safety Meeting	9/16/2017	23:45					
6	Rig Up	9/16/2017	23:50					Assign Tasks
7	Pre-Job Safety Meeting	9/17/2017	04:40					Meeting with All Personnel
8	Floor Rig Up	9/17/2017	04:50					Stab Head
9	Load Lines	9/17/2017	05:04	8.34	2	2		
10	Pressure Test	9/17/2017	05:08	8.34			4230	
11	Spacer	9/17/2017	05:14	8.34	5.5	20	120	Fresh Water with Dye
12	Cement	9/17/2017	05:30	14.5	4	185	90	Batch Weigh, and Pump, 762sk of 14.5# CMT with 1.39 yld, 6.76 gal/sk H2O. (188.4 Bbls)
13	Cement	9/17/2017	06:32	14.5	3	3	77	Had to Batch Send Final Tub
14	Shut Down/Wash Up	9/17/2017	06:37	8.34				Washing Up Tub
15	Drop Plug	9/17/2017	06:43	8.34	3	3	20	Plug away, and Verified
16	Displace	9/17/2017	06:44	8.34	6	107	528	
17	Displace	9/17/2017	07:02	8.34	3	20	710	Slow Rate Prior to Bump
18	Bump Plug	9/17/2017	07:08	8.34			1234	Bumped the Plug @ 130 bbls away, Got 10 Bbls Good CMT to Surface
19	Casing Test	9/17/2017	07:09	8.34			2400	Walked Up to Casing Test Pressure
20	Check Floats	9/17/2017	07:26	8.34				Floats Held got 1.5 bbls Back
21	Rig-Down Safety Meeting	9/17/2017	07:28					Pre-Rig Down Meeting with Crew
22	Leave Location	9/17/2017	08:00					

3 Pump Diagrams



JobMaster Program Version 4.02C1
Job Number: 1358
Customer: Great Western
Well Name: Marcus LD 11-378HNX



BJ Services

Job Start: Sunday, September 17, 2017