



Great Western Operating Company, LLC

SURFACE POST JOB REPORT

Marcus LD 11-380HNX 05-123-45388
S:34 T:1N R:67W Weld CO

CallSheet #: 1357
Proposal #: 13975



SURFACE Post Job Report

Attention: Mr. Matt Mount | (303) 398-0373 | mmount@gwogco.com
Great Western Operating Company, LLC
1801 Broadway, Suite 500 | Denver, CO 80202

Dear Mr. Mount,

Thank you for the opportunity to provide cementing services on this well. BJ Services strives to achieve complete customer satisfaction. If you have any questions regarding the services or data provided, please contact BJ Services at any time.

Sincerely,

Jacob Ojeda

Field Engineer | (763) 516-3012 | Jacob.Ojeda@bjservices.com

Field Office 1716 East Allison Rd., Cheyenne WY, 82007
Phone: (307) 638-5585

Sales Office 999 18th St. Suite 1200 Denver, CO 80202
Phone: (281) 408-2361



Table of Contents

1 Job Details & Summary	3
1.1 Geometry	3
1.2 Equipment / People	3
1.3 Timing	3
1.4 General Job Information	3
1.5 Job Details	3
1.6 Job Details (cont.)	3
1.7 Circulation	4
1.8 Job Execution Information	4
1.9 Job Fluid Details	4
2 Job Logs	5
3 Pump Diagrams	6
4 Field Ticket	7
4.1 Service Charges	7
4.2 Material Charges	7
4.3 Grand Total	7

1 Job Details & Summary

1.1 Geometry

Type	Function	OD (in)	ID (in)	Weight (lb/ft)	Thread	Top (ft)	Bottom (ft)	Excess (%)
Open Hole	Outer	n/a	13.5	n/a	n/a	0	1738	25
Casing	Inner	9.625	8.921	36	n/a	0	1738	0

1.2 Equipment / People

Unit Type	Unit	Employee #1	Mileage
Cement Pump	C938	Nepgen, AJ	90
Light Duty Pickups	3	Staples, Anthony	90
Bulk Trailer	PPC41312	Martinez, Michael	180
Bulk Trailer	PPC41314	Soto Jr., Ruben	180

1.3 Timing

Event	Date/Time
Call Out	9/15/2017 17:00
Depart Facility	9/15/2017 17:00
On Location	9/15/2017 23:00
Rig Up Iron	9/16/2017 00:00
Job Started	9/16/2017 06:20
Job Completed	9/16/2017 08:15
Rig Down Iron	9/16/2017 08:20
Depart Location	9/16/2017 09:00

1.4 General Job Information

Metrics	Value
Well Fluid Density	8.6 lb/gal
Well Fluid Type	WBM
Rig Circulation Vol	250 bbls
Rig Circulation Time	2 hours
Calculated Displacement	130.1 bbls
Actual Displacement	131 bbls
Total Spacer to Surface	20 bbls
Total CMT to Surface	10 bbls
Well Topped Out	No

1.5 Job Details

Metrics	Value
Flare Prior to Job	NO
Flare During Job	NO
Flare at End of Job	NO
Well Full Prior to Job	YES
Well Fluid Density Into Well	8.6 lb/gal
Well Fluid Density Out of Well	8.6 lb/gal

1.6 Job Details (cont.)

Metrics	Value
BHCT	88 °F
BHST	109 °F



1.7 Circulation

Lost Circulation Experienced
NO

1.8 Job Execution Information

Job	Fluid	Product	Function	Density (lb/gal)	Yield (ft ³ /sk)	Water Rq. (gal/sk)	Water Rq. (gal/bbl)	Volume (sk)	Volume (bbl)	Top (ft)
1	1	Water	Flush	8.33			42.00		20.00	0
1	2	S100-22	Primary	14.50	1.39	6.76		762.00	188.42	0
1	3	Water	DisplacementFinal	8.33			42.00		131.00	0
1	4	S100-22	Topout	14.50	1.39	6.76		65.00	16.07	0

1.9 Job Fluid Details

Job	Fluid	Type	Fluid	Product	Function	Conc.	Uom	Start (gal)	End (gal)	Used (gal)
1	2	Primary	S100-22	AC3-10	Cement	100.00	%			
1	2	Primary	S100-22	ADF-20	Defoamer	0.03	gal/sk	0	0	0
1	4	Topout	S100-22	AC3-10	Cement	100.00	%			
1	4	Topout	S100-22	ADF-20	Defoamer	0.03	gal/sk	0	0	0



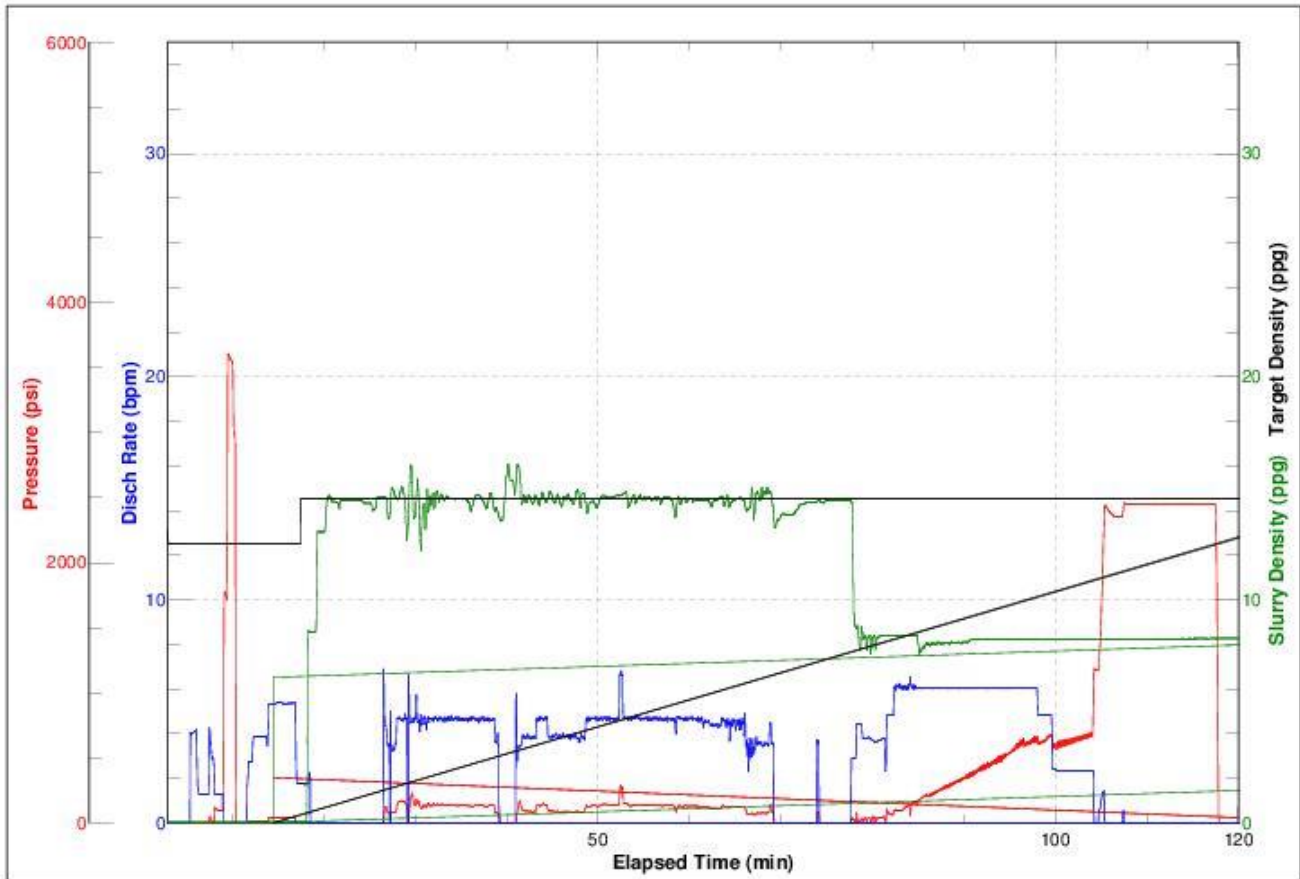
2 Job Logs

Line	Event	Date (MM/DD/YY)	Time (HH:MM)	Density (lb/gal)	Pump Rate (bpm)	Pump Volume (bbls)	Pipe Pressure (psi)	Comment
1	LEAVE YARD	9/15/2017	17:00					CALLED TO YARD/PRETRIP EQUIP
2	ARRIVE ON LOCATION	9/15/2017	19:00					STAGED FOR SAFETY MEETING
3	SPOT EQUIPMENT	9/15/2017	23:00					FALCON AND BULK TRUCKS
4	SAFETY MEETING	9/15/2017	23:15					BJ CREW MEETING
5	RIG UP	9/15/2017	23:30					WATER AND TREATING LINES
6	PREJOB MEETING	9/16/2017	06:00					SPOKE TO COMPANY MAN / RIG CREW
7	FLOOR RIG UP	9/16/2017	06:05					HEAD AND MANIFOLD TO CASING
8	LOAD LINES	9/16/2017	06:20	8.33	4	2	40	CHARGE TREATING LINE
9	PRESSURE TEST	9/16/2017	06:23	8.33				CHECKING FOR LEAKS - 2600
10	SPACER	9/16/2017	06:28	8.33	4.7	20	40	PRE FLUSH/ DYED WATER
11	LEAD CEMENT	9/16/2017	06:33	14.5	4.7		135	1.39 YIELD/ 6.76 MW
12	DROP PLUG	9/16/2017	07:35					9.625 TOP PLUG
13	DISPLACEMENT	9/16/2017	07:38	8.33	6	131	700	DISPLACE WITH WATER
14	BUMP PLUG	9/16/2017	08:01	8.33			1100	PLUG LANDED
15	CASING TEST	9/16/2017	08:04				2450	10 MINS ON CASING
16	BLEED OFF/CHECK FLOAT	9/16/2017	08:15					RELEASE PRESSURE. 10 BBLS CMT TO SURFACE.
17	SHUT DOWN	9/16/2017	08:17					PUMP STOPPED
18	RIG DOWN	9/16/2017	08:20					

3 Pump Diagrams



JobMaster Program Version 4.02C1
Job Number: 1357
Customer: Great Western
Well Name: Marcus LD 11-380HNX



BJ Services

Job Start: Saturday, September 16, 2017



4 Field Ticket

4.1 Service Charges

Part #	Name	Unit Price	Unit	Quantity	Total
5	Additional Hours	\$1,500.00	hour	2	\$3,000.00
2	Depth Charge (based on MD)	\$0.50	foot	1530	\$765.00
6	Drayage Per Additional Unit Roundtrip	\$160.00	hour	2	\$320.00
14	Mobilization, Other	\$600.00	hour	2	\$1,200.00
1	Pumping Charge (includes 8 hours of location time)	\$12,000.00	job	1	\$12,000.00
Subtotal:					\$17,285.00
Discount (%):					% 70.00
Discount (\$):					\$12,099.50
Total:					\$5,185.50

4.2 Material Charges

Part #	Name	Unit Price	Unit	Quantity	Unit	Total
2002	AC3-10	\$29.00	sack	762	sack	\$22,098.00
2502	ADF-20	\$107.00	gal	23	gal	\$2,461.00
2955	ATR-10	\$575.00	lb	1	lb	\$575.00
Subtotal:						\$25,134.00
Discount (%):						% 70.00
Discount (\$):						\$17,593.80
Total:						\$7,540.20

4.3 Grand Total

Services	Materials	Casing Equipment	Top Out	Grand Total
\$5,185.50	\$7,540.20	\$0.00	\$0.00	\$12,725.70