

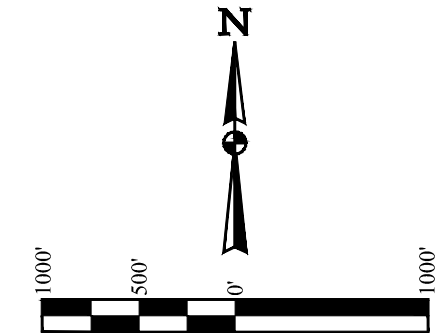
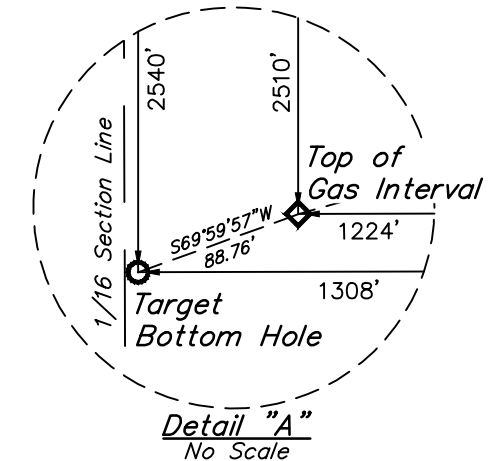
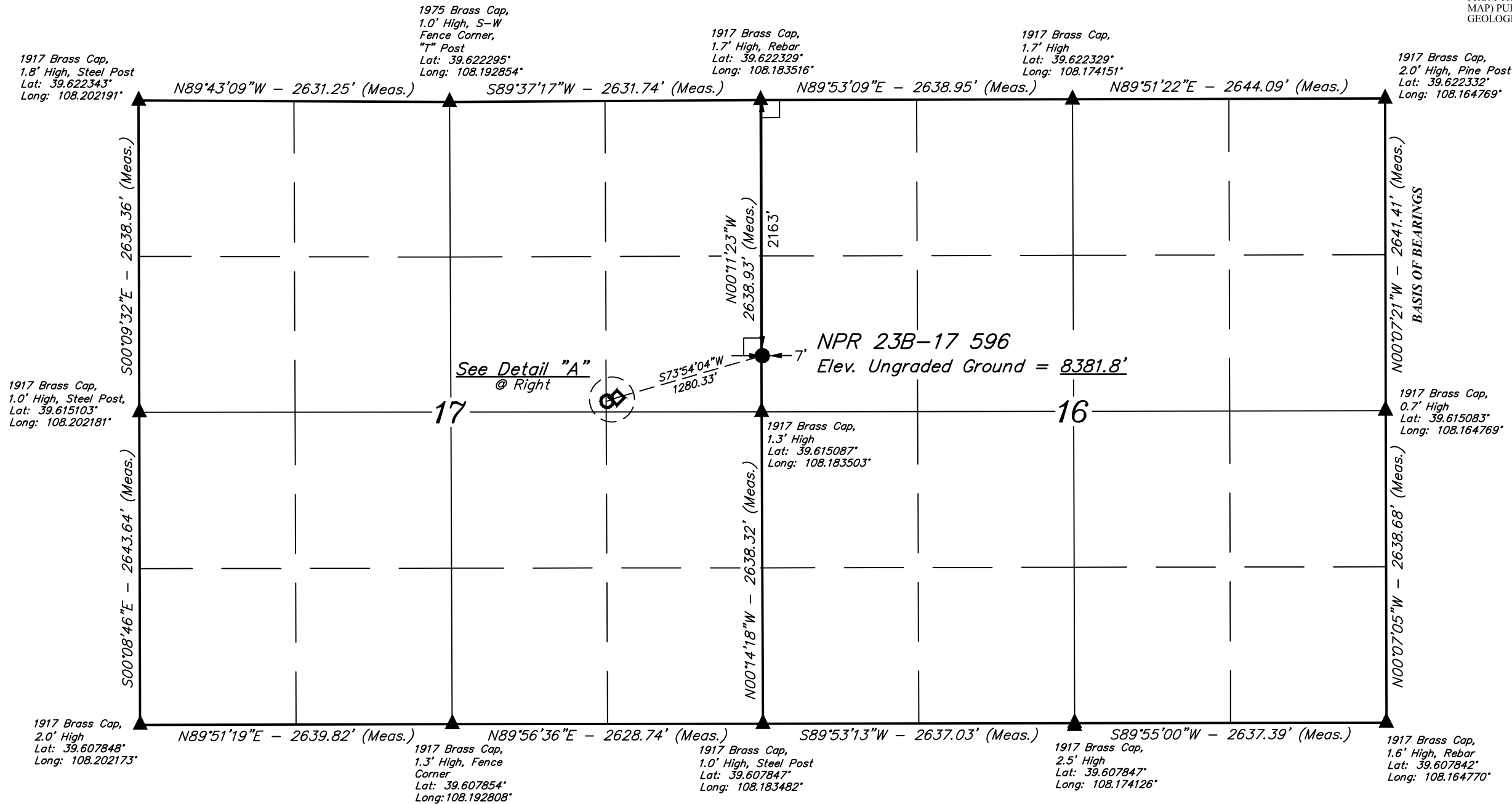
T5S, R96W, 6th P.M.

Caerus Oil & Gas LLC

NPR 23B-17 596
SW 1/4 NW 1/4, SECTION 16, T5S, R96W, 6th P.M.
GARFIELD COUNTY, COLORADO

BASIS OF BEARINGS
 BEARINGS ARE A BASED ASSUMPTION THAT THE EAST LINE OF THE NORTHEAST 1/4 OF SECTION 16 BEARS N00°07'21"W. MONUMENTS DESCRIBED HEREON.

BASIS OF ELEVATION
 BENCH MARK (H79) LOCATED IN THE NE 1/4 OF SECTION 35, T4S, R98W, 6th P.M., TAKEN FROM THE BULL FORK, QUADRANGLE, COLORADO, 7.5 MINUTE SERIES (TOPOGRAPHIC MAP) PUBLISHED BY THE UNITED STATES DEPARTMENT OF THE INTERIOR, GEOLOGICAL SURVEY. SAID ELEVATION IS MARKED AS BEING 8535 FEET.



CERTIFICATE
 THIS IS TO CERTIFY THAT THE ABOVE PLAT WAS PREPARED AND THE LOCATION AS SHOWN WAS STAKED ON THE GROUND FROM FIELD NOTES OF ACTUAL SURVEYS MADE BY ME OR UNDER MY SUPERVISION AND THAT THE SAME ARE TRUE AND CORRECT TO THE BEST OF MY KNOWLEDGE AND BELIEF.

Handwritten Signature
 REGISTERED LAND SURVEYOR
 REGISTRATION NO. 19180
 STATE OF COLORADO 16-09-18

- LEGEND:**
- ◻ = 90° SYMBOL
 - = PROPOSED WELLHEAD.
 - ◆ = TOP OF GAS INTERVAL.
 - = TARGET BOTTOM HOLE.
 - ▲ = SECTION CORNERS LOCATED. (NAD 83)
 - △ = SECTION CORNERS RE-ESTABLISHED. (Not Set on Ground.) (NAD 83)

PDOP = 1.3

NAD 83 (SURFACE LOCATION)	NAD 83 (TOP OF GAS INTERVAL)	NAD 83 (TARGET BOTTOM HOLE)
LATITUDE = 39°36'59.01" (39.616393)	LATITUDE = 39°36'55.53" (39.615425)	LATITUDE = 39°36'55.23" (39.615342)
LONGITUDE = 108°11'00.53" (108.183480)	LONGITUDE = 108°11'16.25" (108.187847)	LONGITUDE = 108°11'17.32" (108.188143)
NAD 27 (SURFACE LOCATION)	NAD 27 (TOP OF GAS INTERVAL)	NAD 27 (TARGET BOTTOM HOLE)
LATITUDE = 39°36'59.10" (39.616416)	LATITUDE = 39°36'55.62" (39.615449)	LATITUDE = 39°36'55.32" (39.615366)
LONGITUDE = 108°10'58.23" (108.182843)	LONGITUDE = 108°11'13.96" (108.187210)	LONGITUDE = 108°11'15.02" (108.187506)
UTM NAD 27 (ZONE 12)	UTM NAD 27 (ZONE 12)	UTM NAD 27 (ZONE 12)
N: 14398816.58 E: 2433841.96	N: 14398425.55 E: 2432622.94	N: 14398392.75 E: 2432540.47

UINTEAH
 ENGINEERING & LAND SURVEYING

WELLS, LLC
 Corporate Office * 85 South 200 East
 Vernal, UT 84078 * (435) 789-1017

SURVEYED BY	JOEL LEFEVRE, J.F.	09-11-18	SCALE
DRAWN BY	M.D.	10-09-18	1" = 1000'

WELL LOCATION PLAT