

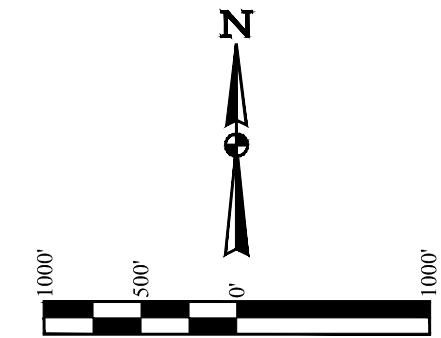
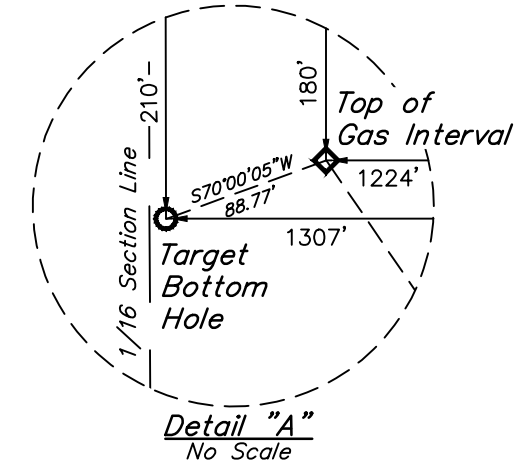
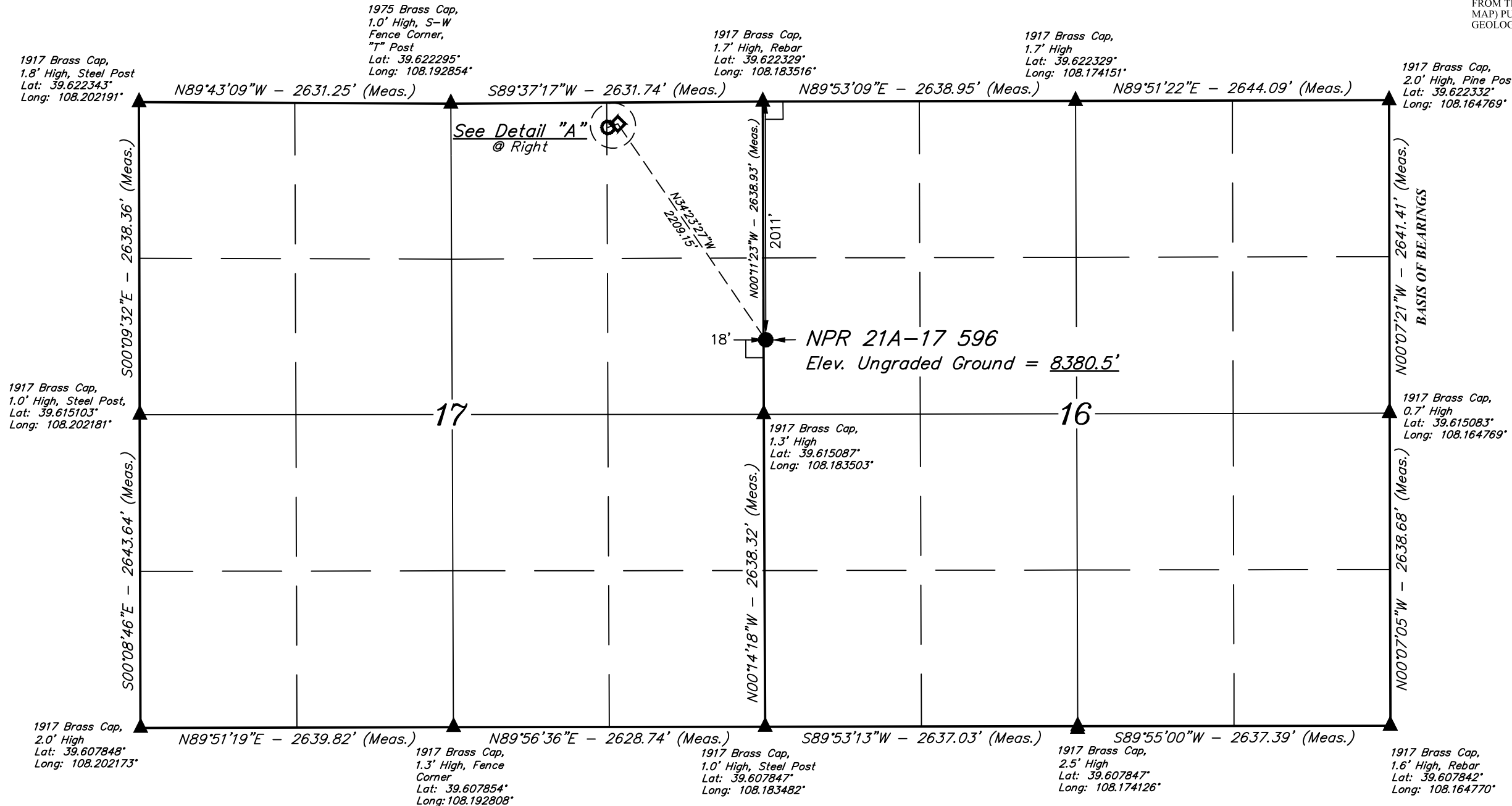
# T5S, R96W, 6th P.M.

Caerus Oil & Gas LLC

**NPR 21A-17 596**  
**SW 1/4 NW 1/4, SECTION 16, T5S, R96W, 6th P.M.**  
**GARFIELD COUNTY, COLORADO**

**BASIS OF BEARINGS**  
 BEARINGS ARE A BASED ASSUMPTION THAT THE EAST LINE OF THE NORTHEAST 1/4 OF SECTION 16 BEARS N00°07'21"W. MONUMENTS DESCRIBED HEREON.

**BASIS OF ELEVATION**  
 BENCH MARK (H79) LOCATED IN THE NE 1/4 OF SECTION 35, T4S, R98W, 6th P.M., TAKEN FROM THE BULL FORK, QUADRANGLE, COLORADO, 7.5 MINUTE SERIES (TOPOGRAPHIC MAP) PUBLISHED BY THE UNITED STATES DEPARTMENT OF THE INTERIOR, GEOLOGICAL SURVEY. SAID ELEVATION IS MARKED AS BEING 8535 FEET.



**CERTIFICATE**  
 THIS IS TO CERTIFY THAT THE ABOVE PLAT WAS PREPARED AND THE LOCATION AS SHOWN WAS STAKED ON THE GROUND FROM FIELD NOTES OF ACTUAL SURVEYS MADE BY ME OR UNDER MY SUPERVISION AND THAT THE SAME ARE TRUE AND CORRECT TO THE BEST OF MY KNOWLEDGE AND BELIEF.

*Handwritten Signature*  
 REGISTERED LAND SURVEYOR  
 REGISTRATION NO. 19180  
 STATE OF COLORADO 10-09-18

- LEGEND:**
- = 90° SYMBOL
  - = PROPOSED WELLHEAD.
  - ◆ = TOP OF GAS INTERVAL.
  - = TARGET BOTTOM HOLE.
  - ▲ = SECTION CORNERS LOCATED. (NAD 83)
  - △ = SECTION CORNERS RE-ESTABLISHED. (Not Set on Ground.) (NAD 83)

PDOP = 1.3

NAD 83 (SURFACE LOCATION)	NAD 83 (TOP OF GAS INTERVAL)	NAD 83 (TARGET BOTTOM HOLE)
LATITUDE = 39°37'00.52" (39.616810)	LATITUDE = 39°37'18.55" (39.621819)	LATITUDE = 39°37'18.25" (39.621736)
LONGITUDE = 108°11'00.39" (108.183441)	LONGITUDE = 108°11'16.28" (108.187856)	LONGITUDE = 108°11'17.35" (108.188153)
NAD 27 (SURFACE LOCATION)	NAD 27 (TOP OF GAS INTERVAL)	NAD 27 (TARGET BOTTOM HOLE)
LATITUDE = 39°37'00.60" (39.616834)	LATITUDE = 39°37'18.64" (39.621843)	LATITUDE = 39°37'18.34" (39.621760)
LONGITUDE = 108°10'58.09" (108.182804)	LONGITUDE = 108°11'13.99" (108.187219)	LONGITUDE = 108°11'15.05" (108.187515)
UTM NAD 27 (ZONE 12)	UTM NAD 27 (ZONE 12)	UTM NAD 27 (ZONE 12)
N: 14398968.94 E: 2433848.17	N: 14400754.27 E: 2432547.39	N: 14400721.47 E: 2432464.91

**UINTEAH**  
 ENGINEERING & LAND SURVEYING

**UELS, LLC**  
 Corporate Office \* 85 South 200 East  
 Vernal, UT 84078 \* (435) 789-1017

<b>SURVEYED BY</b>	JOEL LEFEVRE, J.F.	09-11-18	<b>SCALE</b>
<b>DRAWN BY</b>	M.D.	10-09-18	1" = 1000'

**WELL LOCATION PLAT**