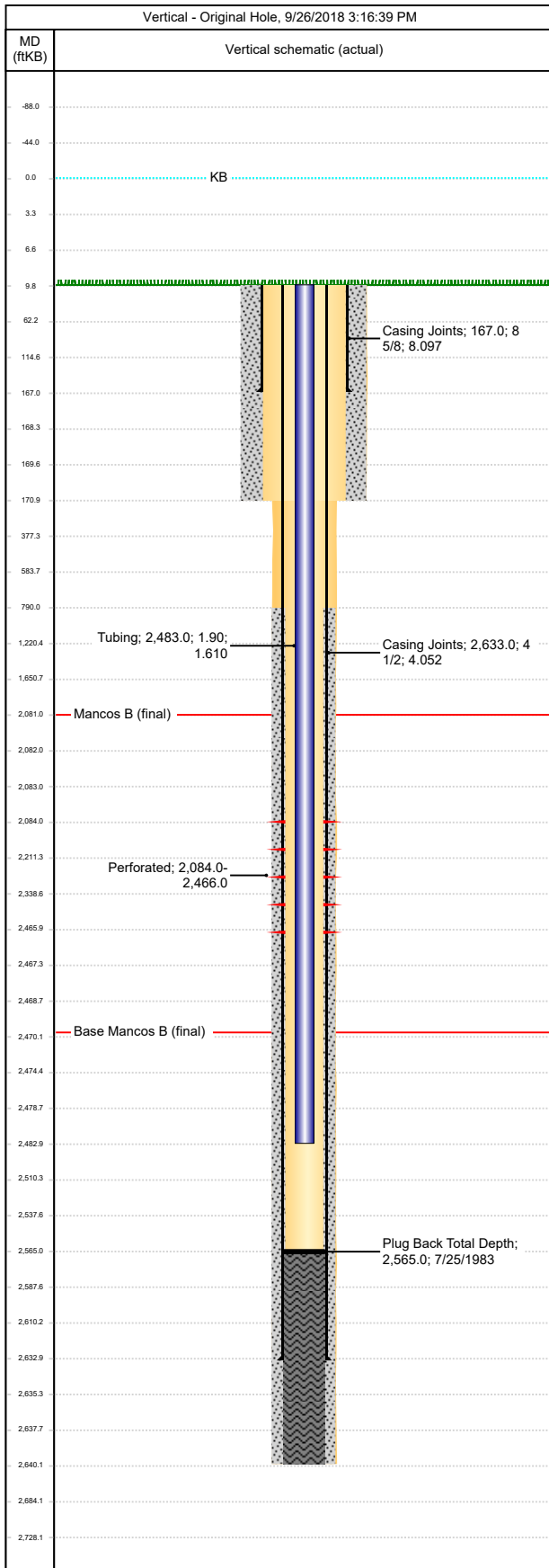




UGC - Downhole Well Profile

Well Name: **FEDERAL 20-03**

API/UWI 05103089770000	Surface Legal Location NENW-S20-T2S-R101W-6PM	Field Name Cathedral	License #	State/Province CO	Well Configuration Type Vertical
Original KB Elevation (ft) 6,166	KB-Tubing Head Distance (ft) 10	Spud Date 7/22/1983 00:00	Rig Release Date 7/24/1983 00:00	PBTD (All) (ftKB) Original Hole - 2,565.0	Total Depth All (TVD) (ftKB) Original Hole - 2,640.0



Casing Strings								
Casing Description Surface	OD (in) 8 5/8	Wt/Len (lb/ft) 24.00	String Grade J-55	Top Connection	Set Depth (ftKB) 167.0			
Casing Components								
Item Description Casing Joints	Length (ft) 157	ID (in) 8.097	Joints 4	Drift (in) 7.972	P Collapse (psi) 1370	P Burst (psi) 2950		
Casing Description Production	OD (in) 4 1/2	Wt/Len (lb/ft) 10.50	String Grade J-55	Top Connection	Set Depth (ftKB) 2,633.0			
Casing Components								
Item Description Casing Joints	Length (ft) 2623	ID (in) 4.052	Joints 67	Drift (in) 3.927	P Collapse (psi) 4010	P Burst (psi) 4790		
Perforations								
Date	Top (ftKB)	Btm (ftKB)	Shot Dens (shots/ft)	Entered Shot Total	Linked Zone			
8/20/1983	2084	2466	0.1	33	Mancos B, Original Hole			
Tubing Strings								
Tubing Description Tubing - Production	Run Date 8/20/1983		String Length (ft) 2,473.00		Set Depth (ftKB) 2,483.0			
Item Des	Jts	OD (in)	Wt (lb/ft)	Grade	Len (ft)	P Burst (psi)	P Collapse (psi)	Tensile Max (1000lbf)
Tubing	80	1.9	2.75	J-55	2473	7350	7750	
Rod Strings								
Rod Des	Run Date	Len (ft)		Set Depth (ftKB)		Comment		
Item Des	Jts	OD (in)	Wt (lb/ft)	Grade	Len (ft)	Com		
Other In Hole								
Description		OD (in)	Top (ftKB)	Run Date	Pull Date	Comment		
Cement Stages								
Stg # 1	Description Surface Casing Cement		Top (ftKB) 10	Btm (ftKB) 171	Comment 100 sk Class H			
Stg # 1	Description Cement Plug		Top (ftKB) 2565	Btm (ftKB) 2640	Comment			
Stg # 1	Description Production Casing Cement		Top (ftKB) 790	Btm (ftKB) 2640	Comment 175 sk 10-2 RFC			