

# T5S, R96W, 6th P.M.

## LEGEND:

- └─┘ = 90° SYMBOL
- = PROPOSED WELLHEAD.
- ◆ = TOP OF GAS INTERVAL.
- = TARGET BOTTOM HOLE.
- ▲ = SECTION CORNERS LOCATED. (NAD 83)

1917 Brass Cap,  
1.7' High, Rebar  
Lat: 39.622329°  
Long: 108.183516°

1917 Brass Cap,  
1.7' High  
Lat: 39.622329°  
Long: 108.174151°

1917 Brass Cap,  
2.0' High, Pine Post  
Lat: 39.622332°  
Long: 108.164769°

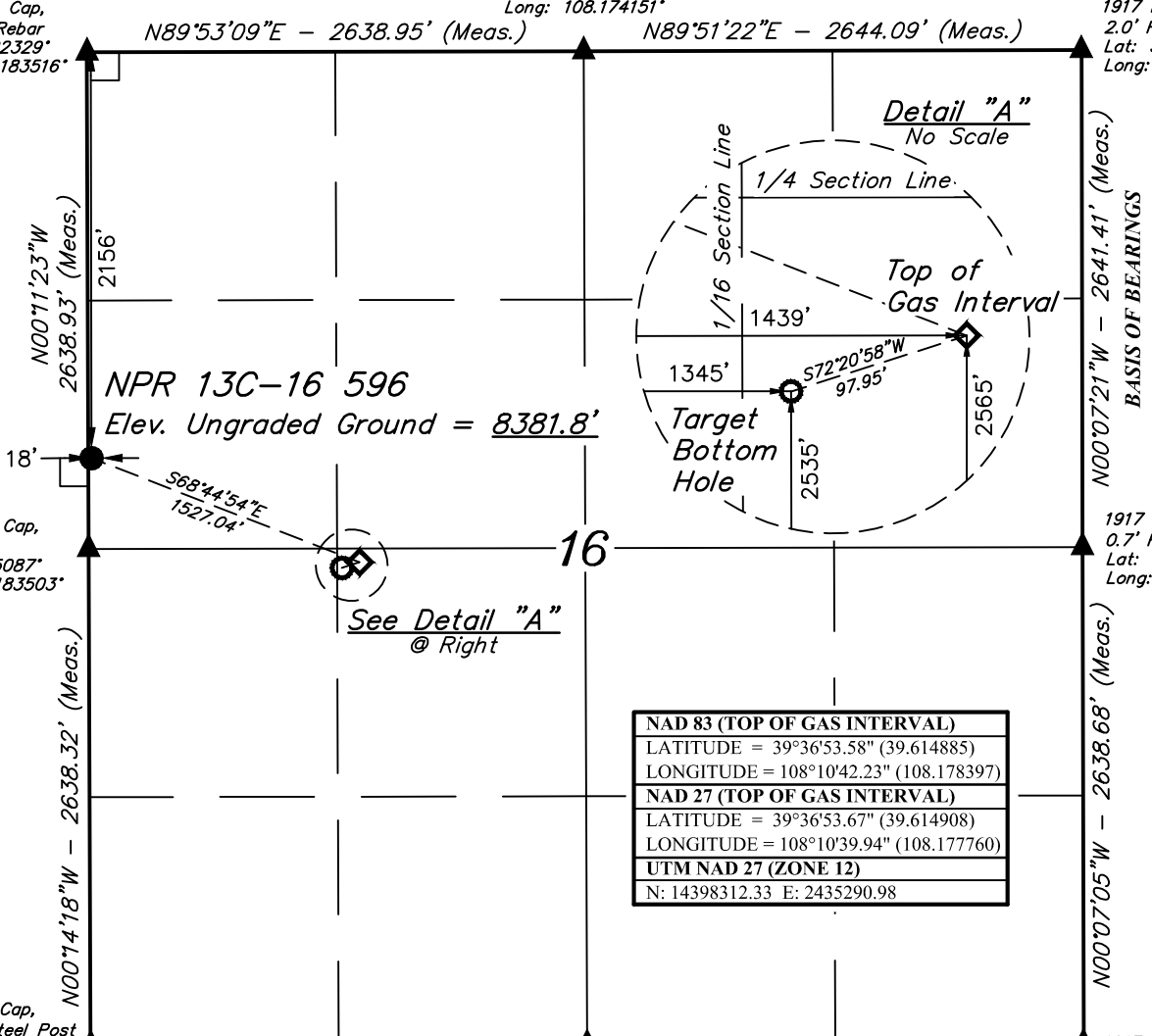
1917 Brass Cap,  
1.3' High  
Lat: 39.615087°  
Long: 108.183503°

1917 Brass Cap,  
0.7' High  
Lat: 39.615083°  
Long: 108.164769°

1917 Brass Cap,  
1.0' High, Steel Post  
Lat: 39.607847°  
Long: 108.183482°

1917 Brass Cap,  
2.5' High  
Lat: 39.607847°  
Long: 108.174126°

1917 Brass Cap,  
1.6' High, Rebar  
Lat: 39.607842°  
Long: 108.164770°



**NPR 13C-16 596**  
Elev. Ungraded Ground = 8381.8'

See Detail "A"  
@ Right

<b>NAD 83 (TOP OF GAS INTERVAL)</b>
LATITUDE = 39°36'53.58" (39.614885)
LONGITUDE = 108°10'42.23" (108.178397)
<b>NAD 27 (TOP OF GAS INTERVAL)</b>
LATITUDE = 39°36'53.67" (39.614908)
LONGITUDE = 108°10'39.94" (108.177760)
<b>UTM NAD 27 (ZONE 12)</b>
N: 14398312.33 E: 2435290.98

PDOP = 1.4

NAD 83 (SURFACE LOCATION)	NAD 83 (TARGET BOTTOM HOLE)
LATITUDE = 39°36'59.08" (39.616411)	LATITUDE = 39°36'53.29" (39.614804)
LONGITUDE = 108°11'00.39" (108.183443)	LONGITUDE = 108°10'43.42" (108.178728)
NAD 27 (SURFACE LOCATION)	NAD 27 (TARGET BOTTOM HOLE)
LATITUDE = 39°36'59.17" (39.616435)	LATITUDE = 39°36'53.38" (39.614827)
LONGITUDE = 108°10'58.10" (108.182806)	LONGITUDE = 108°10'41.13" (108.178091)
UTM NAD 27 (ZONE 12)	UTM NAD 27 (ZONE 12)
N: 14398823.67 E: 2433852.25	N: 14398279.90 E: 2435198.56

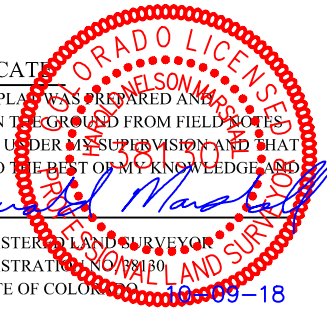


CERTIFICATE

THIS IS TO CERTIFY THAT THE ABOVE PLAT WAS PREPARED AND THE LOCATION AS SHOWN WAS STAKED ON THE GROUND FROM FIELD NOTES OF ACTUAL SURVEYS MADE BY ME OR UNDER MY SUPERVISION AND THAT THE SAME ARE TRUE AND CORRECT TO THE BEST OF MY KNOWLEDGE AND BELIEF.

*Handwritten Signature*

REGISTERED LAND SURVEYOR  
REGISTRATION NO. 180  
STATE OF COLORADO 10-09-18



**BASIS OF BEARINGS**  
BEARINGS ARE A BASED ASSUMPTION THAT THE EAST LINE OF THE NORTHEAST 1/4 OF SECTION 16 BEARS N00°07'21"W. MONUMENTS DESCRIBED HEREON.

**BASIS OF ELEVATION**  
BENCH MARK (H79) LOCATED IN THE NE 1/4 OF SECTION 35, T4S, R98W, 6th P.M., TAKEN FROM THE BULL FORK, QUADRANGLE, COLORADO, 7.5 MINUTE SERIES (TOPOGRAPHIC MAP) PUBLISHED BY THE UNITED STATES DEPARTMENT OF THE INTERIOR, GEOLOGICAL SURVEY. SAID ELEVATION IS MARKED AS BEING 8535 FEET.

## Caerus Oil & Gas LLC

**NPR 13C-16 596**  
SW 1/4 NW 1/4, SECTION 16, T5S, R96W, 6th P.M.  
GARFIELD COUNTY, COLORADO

<b>SURVEYED BY</b>	JOEL LEFEVRE, J.F.	09-11-18	<b>SCALE</b>
<b>DRAWN BY</b>	M.D.	10-09-18	1" = 1000'

## WELL LOCATION PLAT



**UELS, LLC**  
Corporate Office \* 85 South 200 East  
Vernal, UT 84078 \* (435) 789-1017