

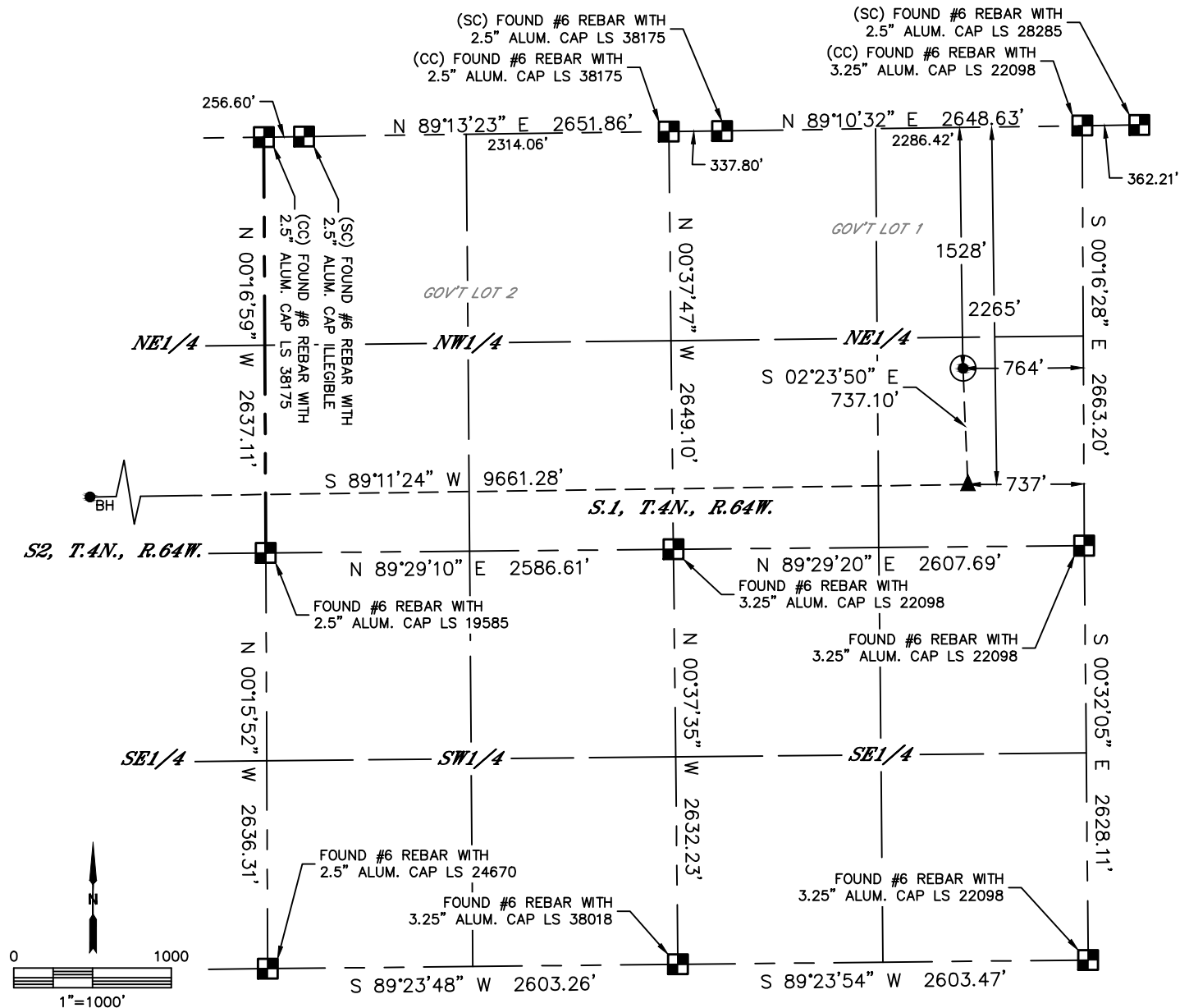


Lat40°, Inc. 6250 W. 10th Street, Unit 2, Greeley, CO 970-515-5294

WELL LOCATION CERTIFICATE

RED CLOUD 9N

SECTION: 1
TOWNSHIP: 4N
RANGE: 64W
6TH. P.M.
WELD COUNTY, CO



CLIENT: PDC ENERGY, INC.						LANDMAN: MAC NEUMANN			
INSTRUMENT OPERATOR: CASEY KOHOUT						SURVEY DATE: 7/20/2018		SURFACE USE: CROPLAND	
SHL FOOTAGE				SHL LAT °	SHL LONG °	SHL PDOP	SHL ELEV (FT.)	SHL 1/4/1/4	SHL S-T-R
1528	FNL	764	FEL	40.34448	-104.49228	2.1	4603	SENE	1-4-64

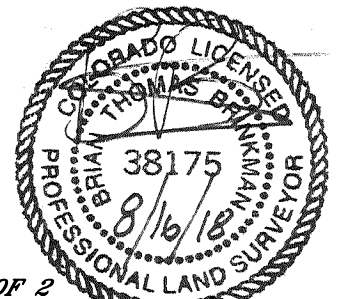
BHL FOOTAGE				BHL LAT °	BHL LONG °	BHL S-T-R	EP LAT °	EP LONG °	EP S-T-R
2265	FNL	50	FWL	40.34238	-104.52685	2-4-64	40.34246	-104.49220	1-4-64

LEGEND

- = ALIQUOT MONUMENT AS DESCRIBED
- = CALCULATED POSITION
- = SURFACE HOLE LOCATION (SHL)
- ▲ = ENTRY POINT LOCATION (EP)
- _{BH} = BOTTOM HOLE LOCATION (BHL)
- ⊙ = EXISTING WELL
- ⊙ = ABANDONED WELL

NOTE:

- 1) Bearings shown are Grid Bearings of the Colorado State Plane Coordinate System, North Zone, North American Datum 1983. The lineal dimensions as contained herein are based upon the "U.S. Survey Foot."
- 2) Distances to section lines measured at 90 degrees from said section lines.
- 3) Ground elevations are based on an observed GPS elevation (NAVD 1988 DATUM).
- 4) Latitude and Longitude shown are (NAD 83 DATUM).
- 5) IMPROVEMENTS: See LOCATION DRAWING for all visible improvements within 500' of oil and gas location.
- 6) This map does not represent a boundary survey.



SHEET 1 OF 2

Brian T. Brinkman—On behalf of Lat40°, Inc.
Colorado Licensed Professional Land Surveyor No. 38175
DATE: 8/17/2018
PROJECT#: 2017003

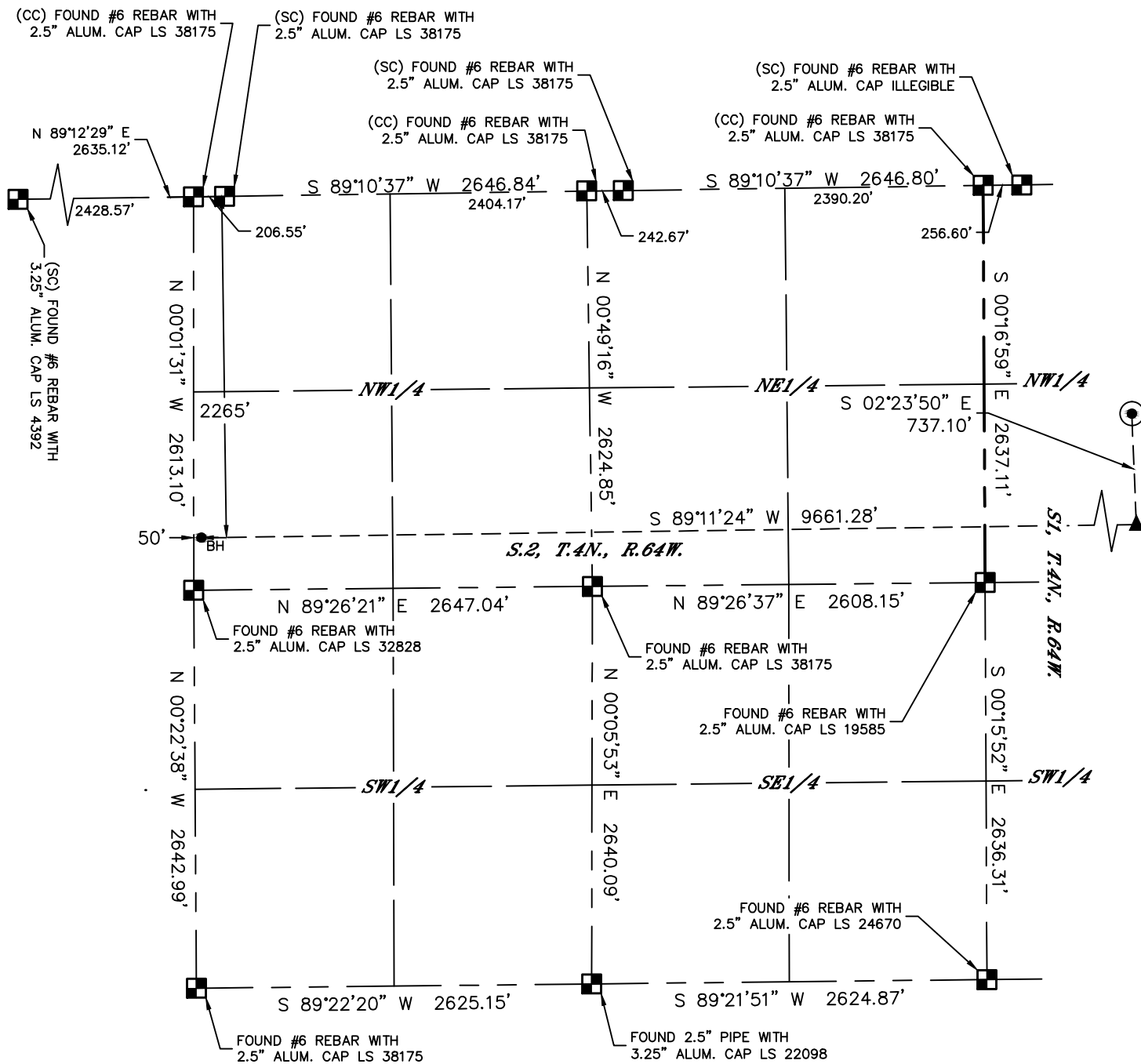


Lat40°, Inc. 6250 W. 10th Street, Unit 2, Greeley, CO 970-515-5294

WELL LOCATION CERTIFICATE

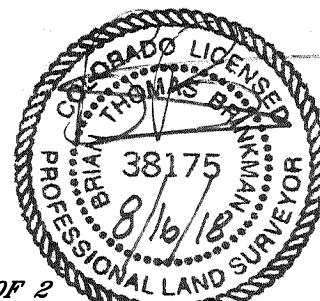
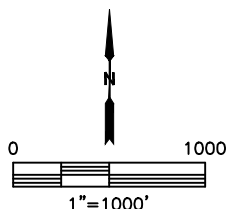
RED CLOUD 9N

SECTION: 1
TOWNSHIP: 4N
RANGE: 64W
6TH. P.M.
WELD COUNTY, CO



LEGEND

- = ALIQUOT MONUMENT AS DESCRIBED
- = CALCULATED POSITION
- = SURFACE HOLE LOCATION (SHL)
- = ENTRY POINT LOCATION (EP)
- = BOTTOM HOLE LOCATION (BHL)
- = EXISTING WELL
- = ABANDONED WELL



SHEET 2 OF 2

Brian T. Brinkman—On behalf of Lat40°, Inc.
Colorado Licensed Professional Land Surveyor No. 38175
DATE: 8/17/2018
PROJECT#: 2017003