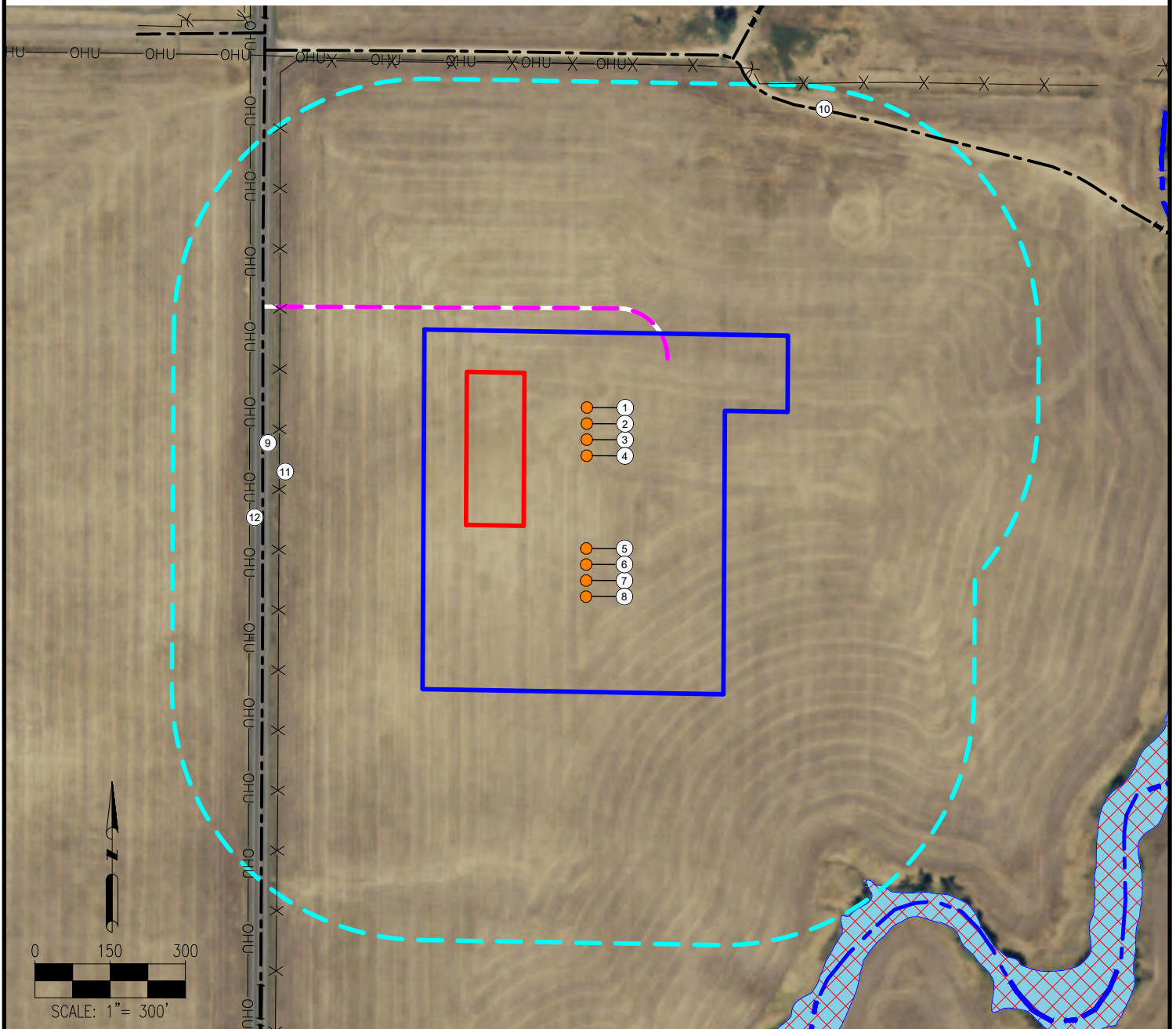


LUSSING TRUST 4-64 19-20 3AH-3DH, 4AH-4DH PAD LOCATION DRAWING



1. LUSSING TRUST 4-64 19-20 3D1H
2. LUSSING TRUST 4-64 19-20 3C2H
3. LUSSING TRUST 4-64 19-20 3D3H
4. LUSSING TRUST 4-64 19-20 4C1H
5. LUSSING TRUST 4-64 19-20 4D1H
6. LUSSING TRUST 4-64 19-20 4C2H
7. LUSSING TRUST 4-64 19-20 4D2H
8. LUSSING TRUST 4-64 19-20 4C3H

9. WATKINS ROAD IS $\pm 634'$ W
10. PRIVATE ROAD IS $\pm 775'$ NE
11. FENCE IS $\pm 613'$ W
12. OVERHEAD UTILITY IS $\pm 672'$ W

LEGEND:

- = PROPOSED ACCESS ROAD
- = EXISTING ROAD
- X-X-X = FENCE
- OHU— = OVERHEAD UTILITY
- = STREAM
- = DISTURBANCE AREA
- = 500' RADIUS
- = PROPOSED FACILITY BERM
- = FLOODPLAIN
- = PROPOSED MLVT

MEASURED FROM NEAREST WELL OR FACILITY:

BUILDING $\pm 1299'$ NW
 BUILDING UNIT $\pm 5245'$ SE
 PUBLIC ROAD (WATKINS ROAD) $\pm 381'$ W
 PROPERTY LINE (Watkins Road Assoc II LTD) $\pm 392'$ W
 UTILITY (OVERHEAD UTILITY) $\pm 419'$ W
 RAILROAD $\pm 5280'$ N

MEASURED FROM NEAREST EDGE OF DISTURBANCE:
 SURFACE WATER (STREAM) $\pm 548'$ SE

MEASURED FROM NEAREST EDGE OF DISTURBANCE:
 WATER WELL $\pm 977'$ NW SWL = 235'
 PERMIT: 16391-F RECEIPT: 9006229

REFERENCE LOCATION

LUSSING TRUST 4-64 19-20 3CH

LAT: 39.686912° N
 LONG: 104.601123° W
 ELEVATION: 5714'
 1893' FSL & 645' FWL
 PDOP: 1.4
 GPS OPERATOR: RYAN DESMOND

DISCLAIMER:
 THIS PLOT DOES NOT REPRESENT A MONUMENTED LAND SURVEY AND SHOULD NOT BE RELIED UPON TO DETERMINE BOUNDARY LINES, PROPERTY OWNERSHIP OR OTHER PROPERTY INTERESTS. PARCEL LINES, IF DEPICTED HAVE NOT BEEN FIELD VERIFIED AND MAY BE BASED UPON PUBLICLY AVAILABLE DATA THAT ALSO HAS NOT BEEN INDEPENDENTLY VERIFIED.

DATA SOURCE:
 AERIAL IMAGERY: NAIP 2015
 WATER WELLS: COLORADO DWR
 NHD: USGS

PUBLICLY AVAILABLE DATA SOURCES HAVE NOT BEEN INDEPENDENTLY VERIFIED BY ASCENT.

DISTURBANCE ACREAGE:

10.31 ACRES DRILLING OPERATIONS
 4.21 ACRES INTERIM RECLAIM

CURRENT SURFACE USE: HAY MEADOW
 FUTURE SURFACE USE: HAY MEADOW



7535 Hilltop Circle
 Denver, CO 80221
 (303) 928-7128
 www.ascentgeomatics.com

FIELD DATE:
 12-05-17

DRAWING DATE:
 07-20-18

BY:
 PO

CHECKED:
 IJM

SITE NAME:

LUSSING TRUST 4-64 19-20 3AH-3DH, 4AH-4DH PAD

SURFACE LOCATION:

LOT 2 SW 1/4 SEC. 19, T4S, R64W, 6TH P.M.
 ARAPAHOE COUNTY, COLORADO

PREPARED FOR:

