

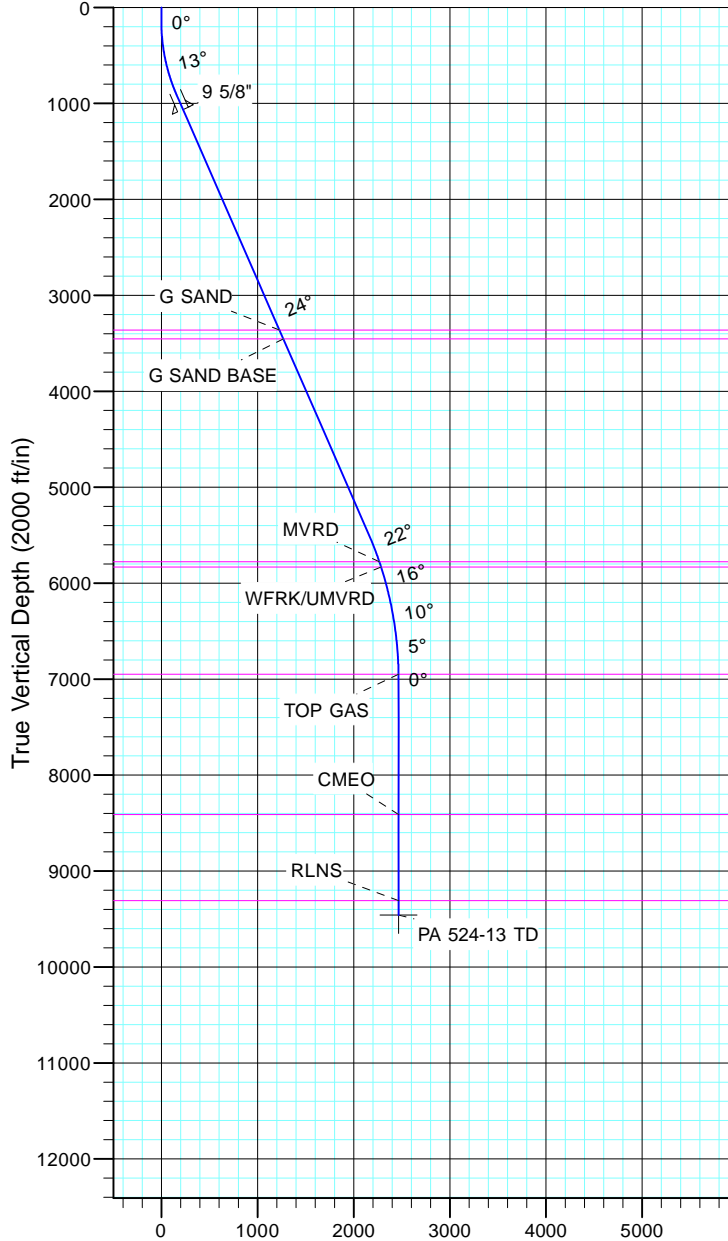
TEP Rocky Mountain LLC

Project: Garfield County, CO NAD83
 Site: PA 44-13
 Well: PA 524-13
 Wellbore: OH
 Design: Plan #1



Azimuths to True North
 Magnetic North: 11.43°

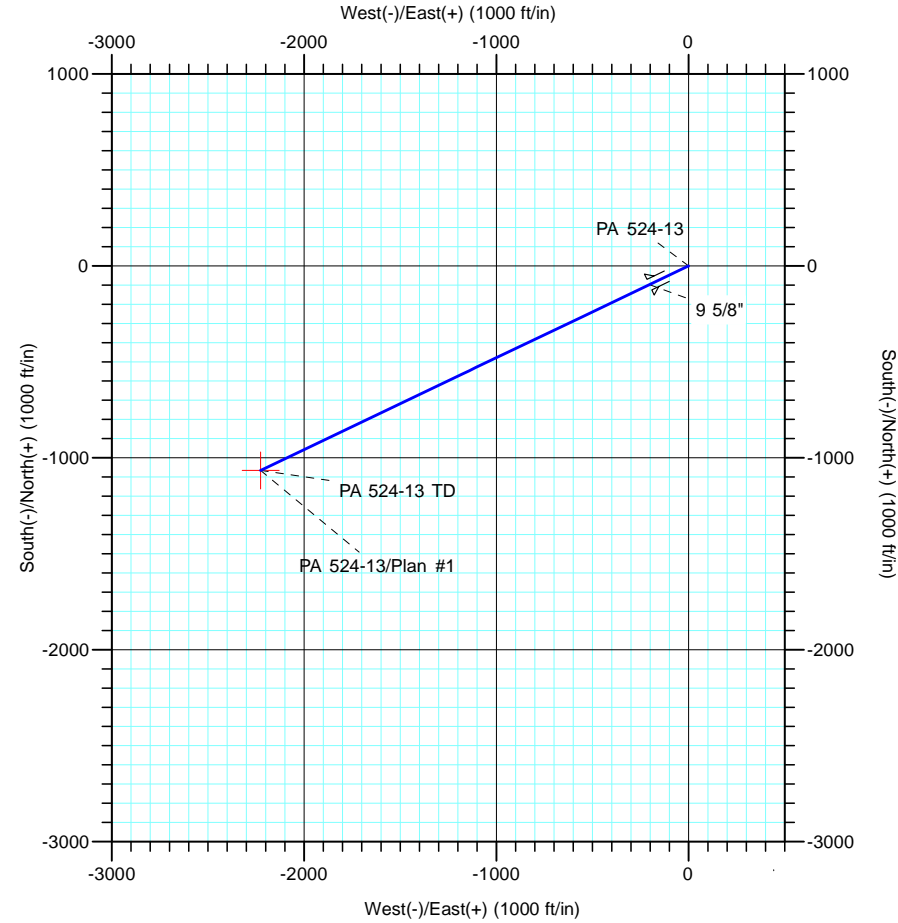
Magnetic Field
 Strength: 53064.3nT
 Dip Angle: 66.02°
 Date: 12/31/2004
 Model: IGRF2000



Vertical Section at 244.42° (2000 ft/in)

CASING DETAILS			
TVD	MD	Name	Size
1064.3	1100.0	9 5/8"	9.625

FORMATION TOP DETAILS		
TVDPath	MDPath	Formation
3362.0	3607.1	G SAND
3455.0	3708.6	G SAND BASE
5777.0	6236.4	MVRD
5833.0	6295.3	WFRK/UMVRD
6948.0	7429.2	TOP GAS
8412.0	8893.2	CMEO
9308.0	9789.2	RLNS



DESIGN TARGET DETAILS							
Name	TVD	+N/-S	+E/-W	Northing	Easting	Latitude	Longitude
PA 524-13 TD	9458.0	-1065.1	-2225.5	1622748.30	2308986.10	39° 31' 3.490 N	107° 56' 59.026 W

SECTION DETAILS										
Sec	MD	Inc	Azi	TVD	+N/-S	+E/-W	Dleg	TFace	VSect	Target
1	0.0	0.00	0.00	0.0	0.0	0.0	0.00	0.00	0.0	
2	150.0	0.00	0.00	150.0	0.0	0.0	0.00	0.00	0.0	
3	936.1	23.58	244.42	914.1	-68.9	-143.9	3.00	244.42	159.5	
4	5907.0	23.58	244.42	5469.8	-927.4	-1937.7	0.00	0.00	2148.2	
5	7479.2	0.00	0.00	6998.0	-1065.1	-2225.5	1.50	180.00	2467.2	
6	9939.2	0.00	0.00	9458.0	-1065.1	-2225.5	0.00	0.00	2467.2	PA 524-13 TD