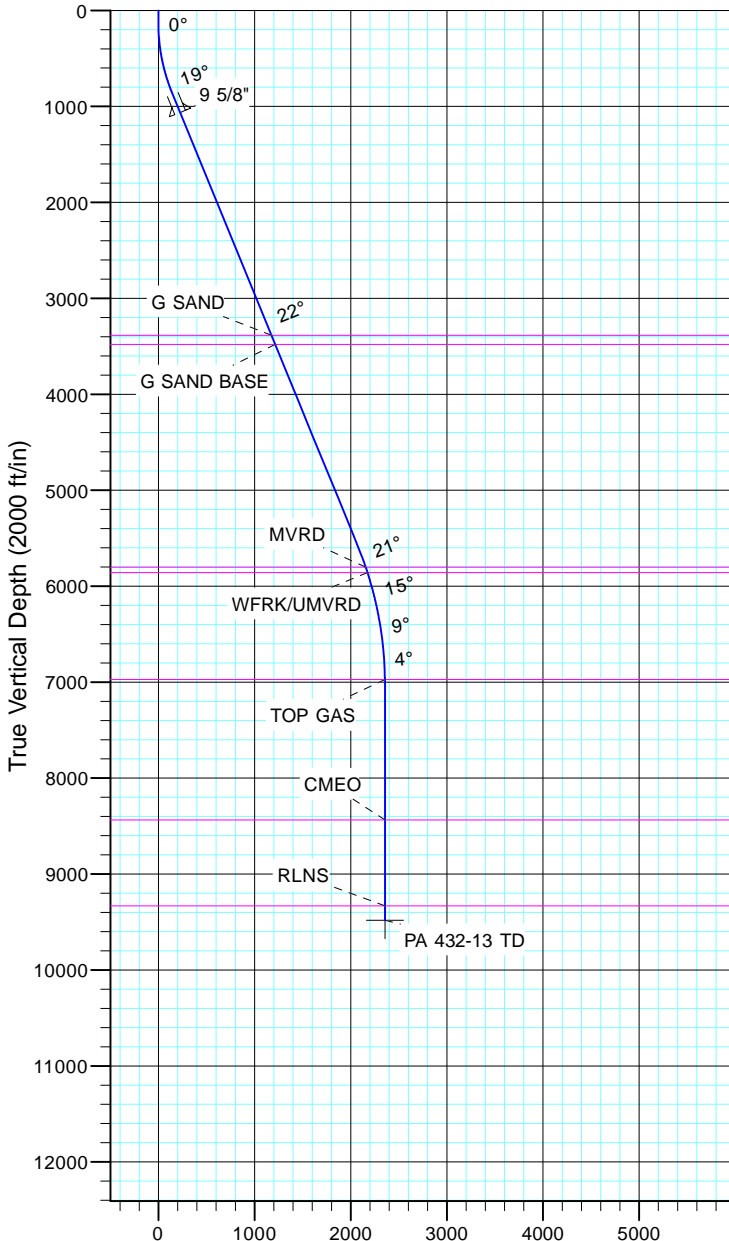


TEP Rocky Mountain LLC  
Project: Garfield County, CO NAD83  
Site: PA 44-13  
Well: PA 432-13  
Wellbore: OH  
Design: Plan #1



Azimuths to True North  
Magnetic North: 11.43°  
  
Magnetic Field  
Strength: 53064.4nT  
Dip Angle: 66.02°  
Date: 12/31/2004  
Model: IGRF2000



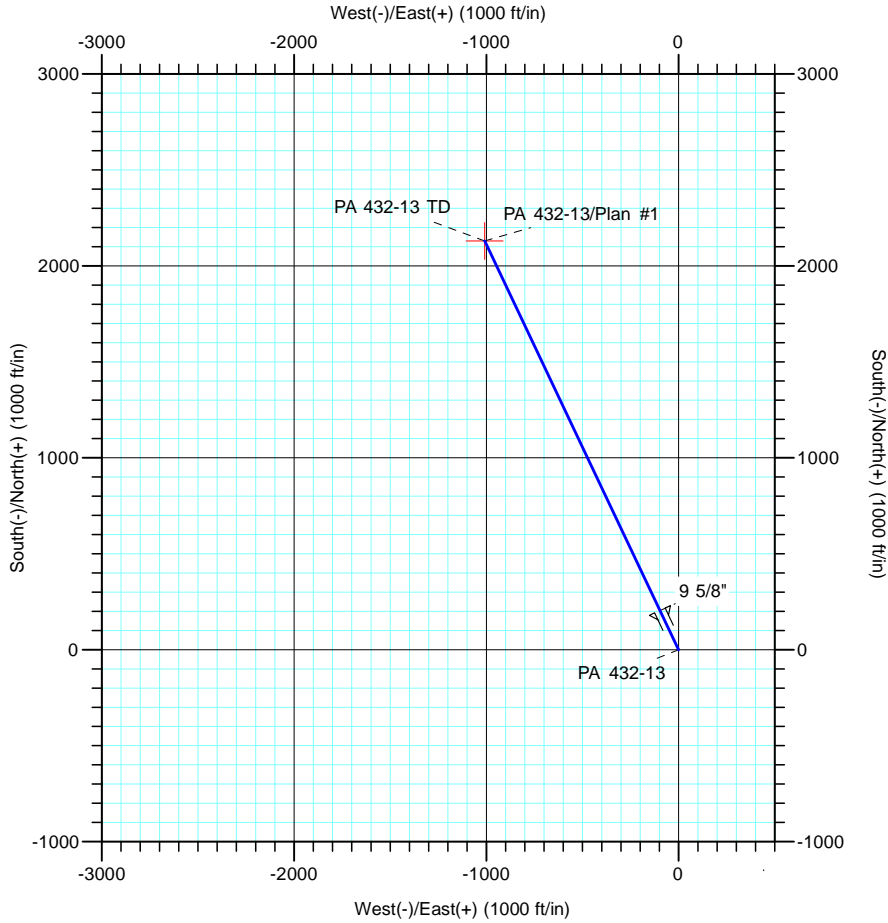
Vertical Section at 334.67° (2000 ft/in)

CASING DETAILS

TVD	MD	Name	Size
1064.9	1100.0	9 5/8"	9.625

FORMATION TOP DETAILS

TVDPath	MDPath	Formation
3387.0	3608.9	G SAND
3480.0	3709.4	G SAND BASE
5802.0	6215.2	MVRD
5858.0	6274.2	WFRK/UMVRD
6973.0	7408.0	TOP GAS
8437.0	8872.0	CMEO
9333.0	9768.0	RLNS



DESIGN TARGET DETAILS

Name	TVD	+N/-S	+E/-W	Northing	Easting	Latitude	Longitude
PA 432-13 TD	9483.0	2130.3	-1008.1	1625960.50	2310275.30	39° 31' 35.570 N	107° 56' 43.684 W

SECTION DETAILS

Sec	MD	Inc	Azi	TVD	+N/-S	+E/-W	Dleg	TFace	VSect	Target
1	0.0	0.00	0.00	0.0	0.0	0.0	0.00	0.00	0.0	
2	135.0	0.00	0.00	135.0	0.0	0.0	0.00	0.00	0.0	
3	876.6	22.25	334.67	858.1	128.5	-60.8	3.00	334.67	142.2	
4	5974.8	22.25	334.67	5576.8	1873.3	-886.5	0.00	0.00	2072.4	
5	7458.0	0.00	0.00	7023.0	2130.3	-1008.1	1.50	180.00	2356.8	
6	9918.0	0.00	0.00	9483.0	2130.3	-1008.1	0.00	0.00	2356.8	PA 432-13 TD