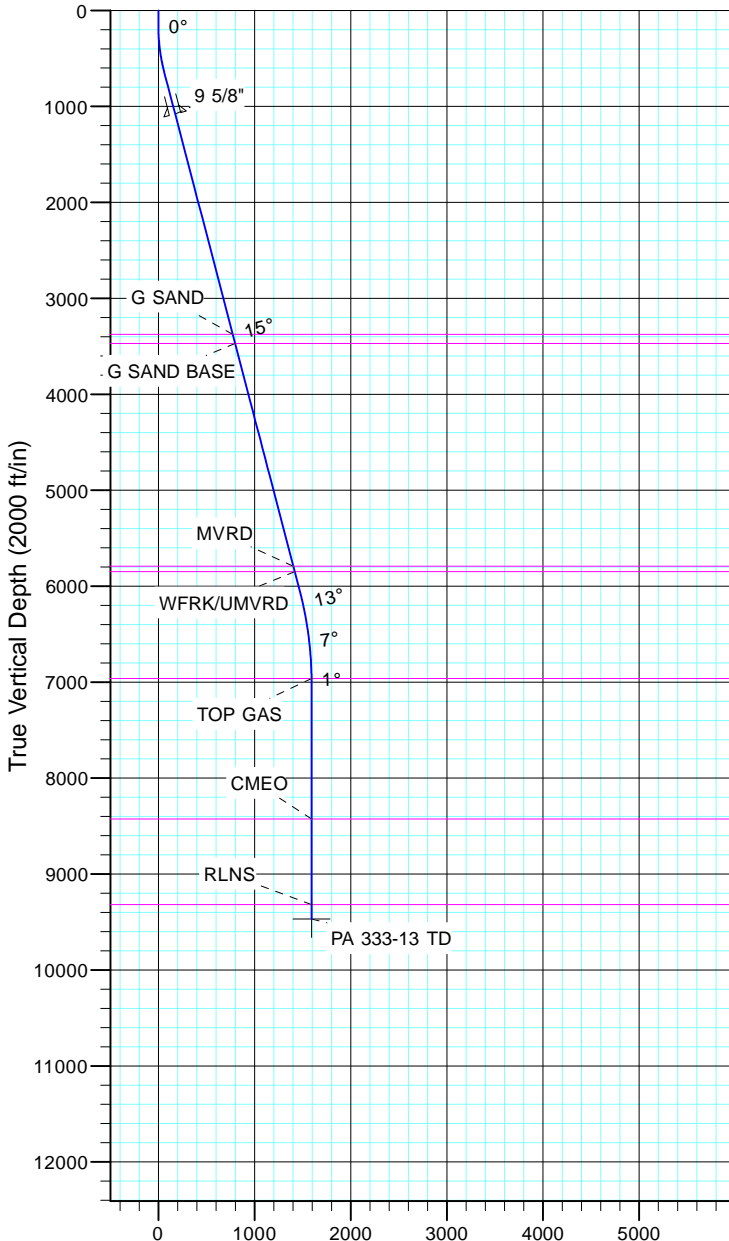


TEP Rocky Mountain LLC
Project: Garfield County, CO NAD83
Site: PA 44-13
Well: PA 333-13
Wellbore: OH
Design: Plan #1



Azimuths to True North
Magnetic North: 11.43°

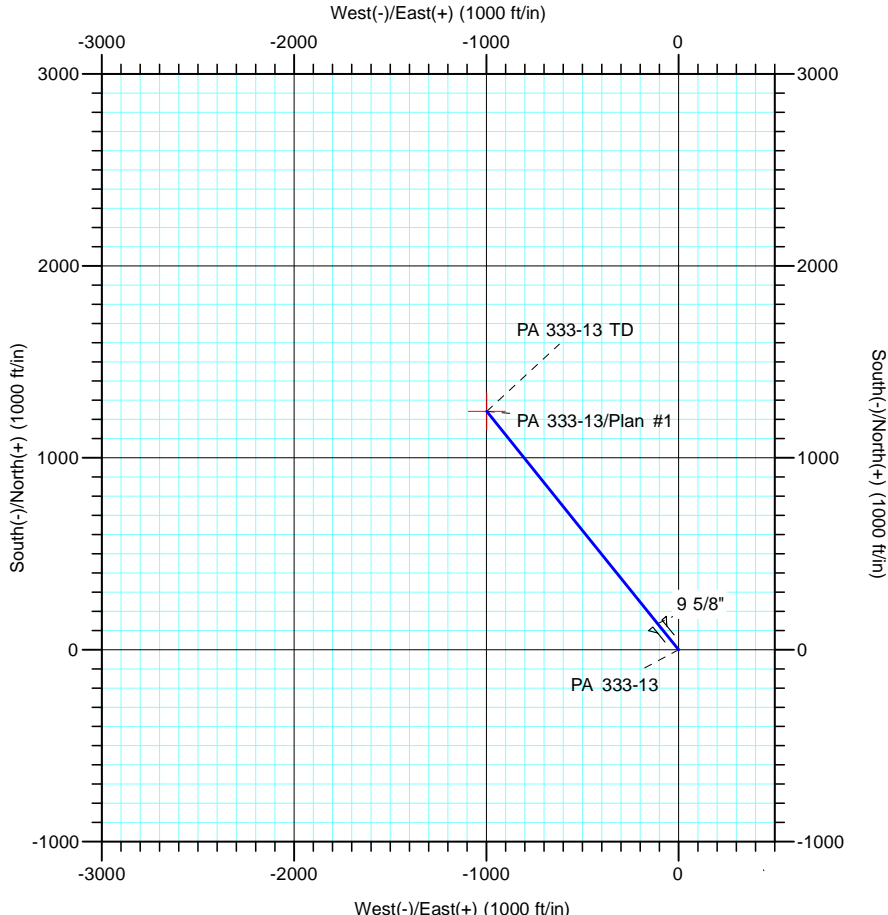
Magnetic Field
Strength: 53064.4nT
Dip Angle: 66.02°
Date: 12/31/2004
Model: IGRF2000



Vertical Section at 321.22° (2000 ft/in)

CASING DETAILS			
TVD	MD	Name	Size
1080.2	1100.0	9 5/8"	9.625

FORMATION TOP DETAILS		
TVDPath	MDPath	Formation
3377.0	3473.6	G SAND
3470.0	3569.7	G SAND BASE
5792.0	5969.4	MVRD
5848.0	6027.3	WFRK/UMVRD
6963.0	7159.4	TOP GAS
8427.0	8623.4	CMEO
9318.0	9514.4	RLNS



DESIGN TARGET DETAILS							
Name	TVD	+N/-S	+E/-W	Northing	Easting	Latitude	Longitude
PA 333-13 TD	9468.0	1242.1	-997.8	1625060.50	2310275.30	39° 31' 26.678 N	107° 56' 43.375 W

SECTION DETAILS										
Sec	MD	Inc	Azi	TVD	+N/-S	+E/-W	Dleg	TFace	VSec	Target
1	0.0	0.00	0.00	0.0	0.0	0.0	0.00	0.00	0.0	
2	165.0	0.00	0.00	165.0	0.0	0.0	0.00	0.00	0.0	
3	652.3	14.62	321.22	647.1	48.2	-38.7	3.00	321.22	61.8	
4	6229.7	14.62	321.22	6043.9	1145.7	-920.4	0.00	0.00	1469.6	
5	7204.4	0.00	0.00	7008.0	1242.1	-997.8	1.50	180.00	1593.3	
6	9664.4	0.00	0.00	9468.0	1242.1	-997.8	0.00	0.00	1593.3	PA 333-13 TD