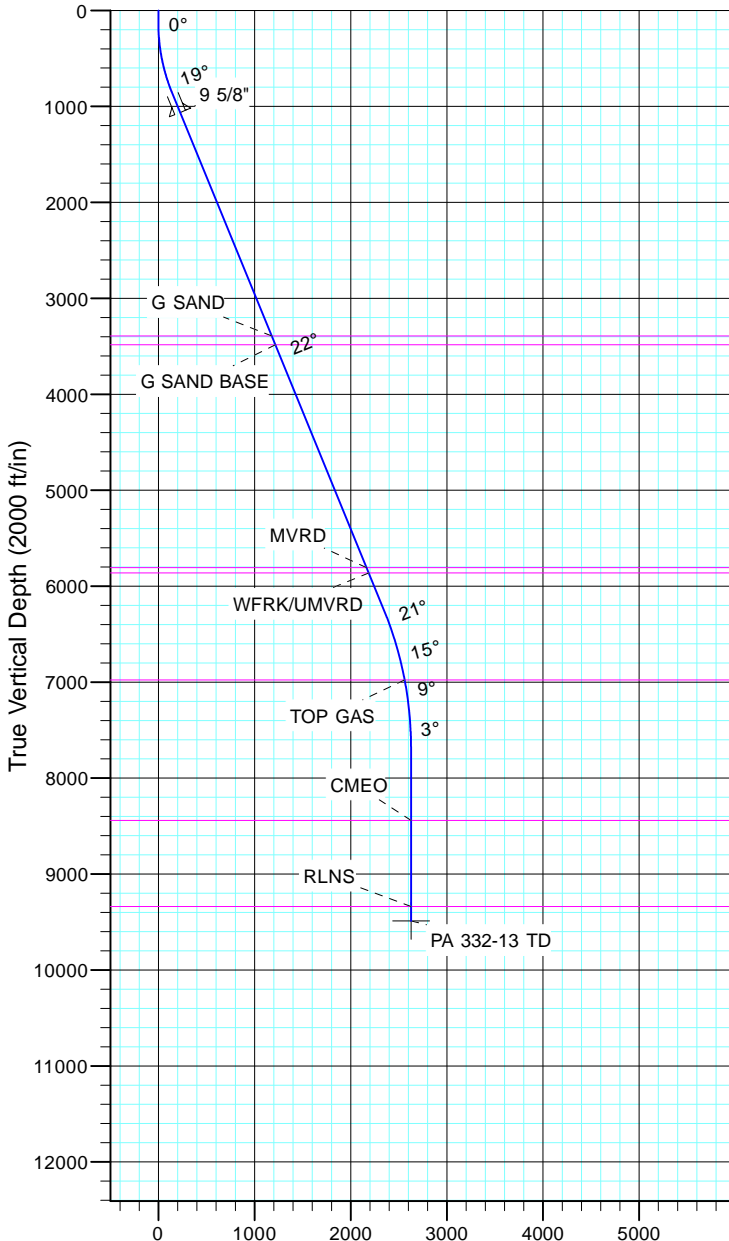


TEP Rocky Mountain LLC
Project: Garfield County, CO NAD83
Site: PA 44-13
Well: PA 332-13
Wellbore: OH
Design: Plan #1



Azimuths to True North
Magnetic North: 11.43°

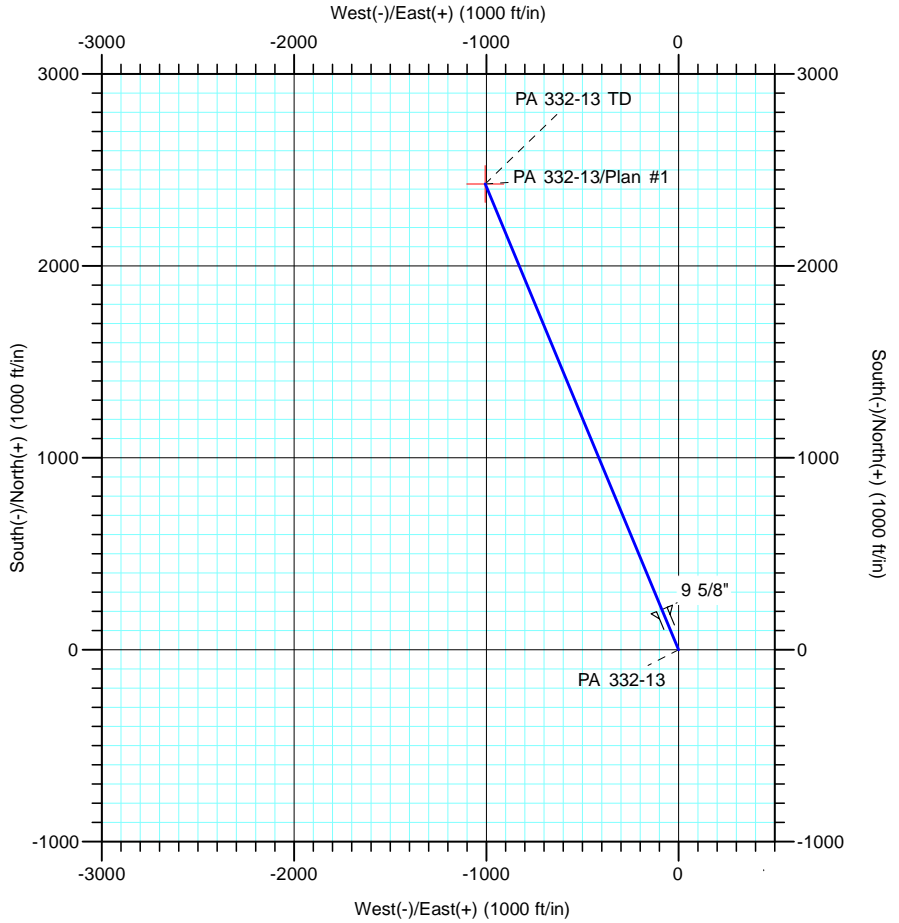
Magnetic Field
Strength: 53064.4nT
Dip Angle: 66.02°
Date: 12/31/2004
Model: IGRF2000



Vertical Section at 337.50° (2000 ft/in)

CASING DETAILS			
TVD	MD	Name	Size
1064.9	1100.0	9 5/8"	9.625

FORMATION TOP DETAILS		
TVDPath	MDPath	Formation
3392.0	3614.2	G SAND
3485.0	3714.6	G SAND BASE
5807.0	6223.3	MVRD
5863.0	6283.8	WFRK/UMVRD
6978.0	7462.1	TOP GAS
8442.0	8930.2	CMEO
9338.0	9826.2	RLNS



DESIGN TARGET DETAILS							
Name	TVD	+N/-S	+E/-W	Northing	Easting	Latitude	Longitude
PA 332-13 TD	9488.0	2427.9	-1005.8	1626260.50	2310295.30	39° 31' 38.539 N	107° 56' 43.532 W

SECTION DETAILS										
Sec	MD	Inc	Azi	TVD	+N/-S	+E/-W	Dleg	TFace	VSec	Target
1	0.0	0.00	0.00	0.0	0.0	0.0	0.00	0.00	0.0	
2	135.0	0.00	0.00	135.0	0.0	0.0	0.00	0.00	0.0	
3	876.4	22.24	337.50	857.9	131.3	-54.4	3.00	337.50	142.1	
4	6693.5	22.24	337.50	6242.2	2165.4	-897.1	0.00	0.00	2343.9	
5	8176.2	0.00	0.00	7688.0	2427.9	-1005.8	1.50	180.00	2628.0	
6	9976.2	0.00	0.00	9488.0	2427.9	-1005.8	0.00	0.00	2628.0	PA 332-13 TD