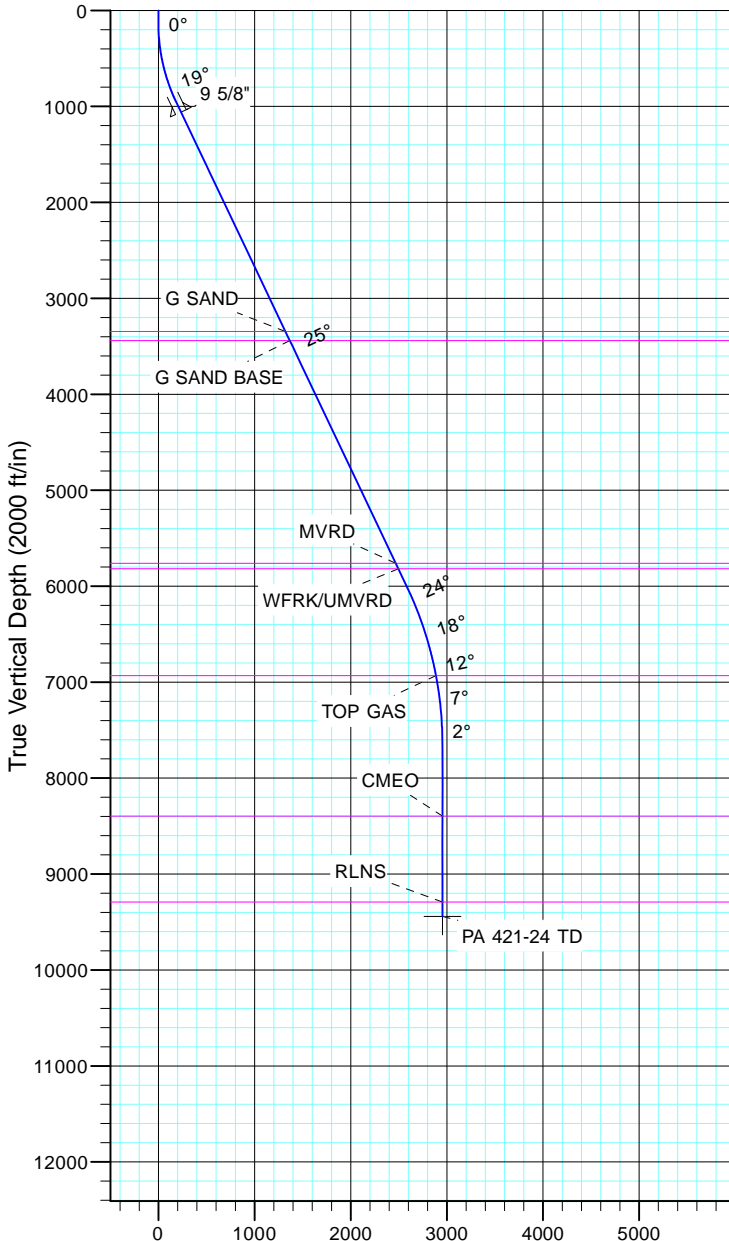


TEP Rocky Mountain LLC
Project: Garfield County, CO NAD83
Site: PA 44-13
Well: PA 421-24
Wellbore: OH
Design: Plan #1



Azimuths to True North
Magnetic North: 11.43°

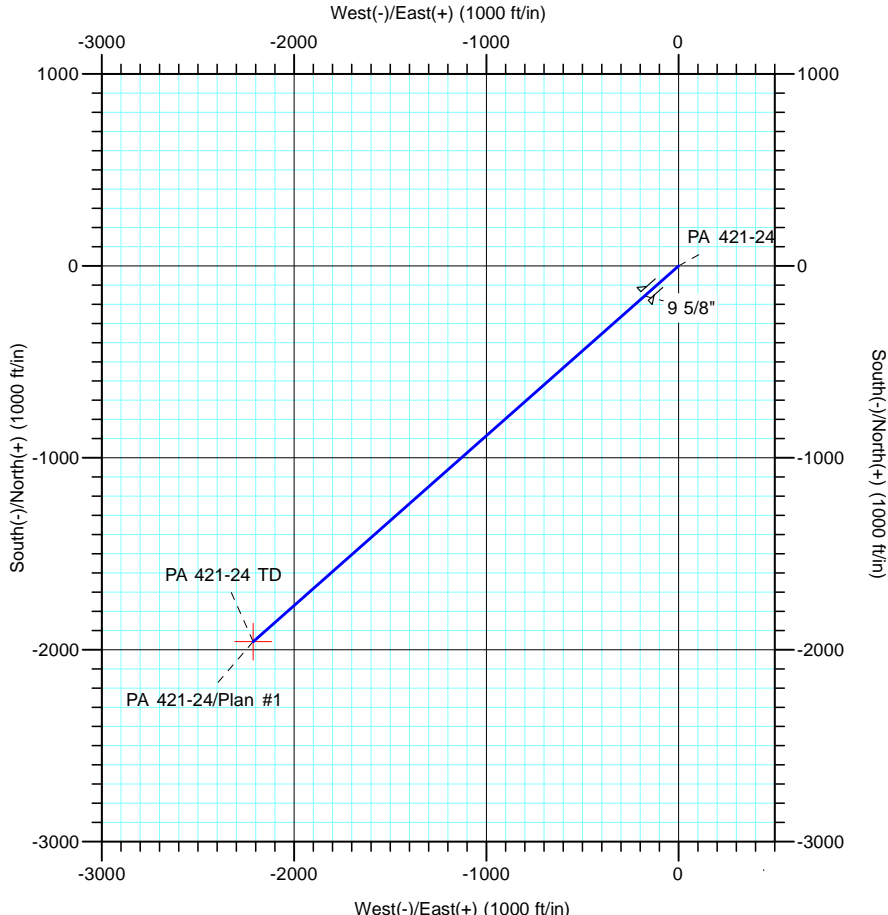
Magnetic Field
Strength: 53064.3nT
Dip Angle: 66.02°
Date: 12/31/2004
Model: IGRF2000



Vertical Section at 228.49° (2000 ft/in)

CASING DETAILS			
TVD	MD	Name	Size
1061.1	1100.0	9 5/8"	9.625

FORMATION TOP DETAILS		
TVDPath	MDPath	Formation
3347.0	3631.0	G SAND
3440.0	3733.9	G SAND BASE
5762.0	6304.8	MVRD
5818.0	6366.8	WFRK/UMVRD
6933.0	7552.6	TOP GAS
8397.0	9020.8	CMEO
9293.0	9916.8	RLNS



DESIGN TARGET DETAILS							
Name	TVD	+N/-S	+E/-W	Northing	Easting	Latitude	Longitude
PA 421-24 TD	9443.0	-1957.9	-2212.2	1621850.80	2308987.00	39° 30' 54.623 N	107° 56' 58.705 W

SECTION DETAILS										
Sec	MD	Inc	Azi	TVD	+N/-S	+E/-W	Dleg	TFace	V Sect	Target
1	0.0	0.00	0.00	0.0	0.0	0.0	0.00	0.00	0.0	
2	135.0	0.00	0.00	135.0	0.0	0.0	0.00	0.00	0.0	
3	982.3	25.42	228.49	954.8	-122.5	-138.5	3.00	228.49	184.9	
4	6572.1	25.42	228.49	6003.4	-1712.8	-1935.2	0.00	0.00	2584.3	
5	8266.8	0.00	0.00	7643.0	-1957.9	-2212.2	1.50	180.00	2954.1	
6	10066.8	0.00	0.00	9443.0	-1957.9	-2212.2	0.00	0.00	2954.1	PA 421-24 TD