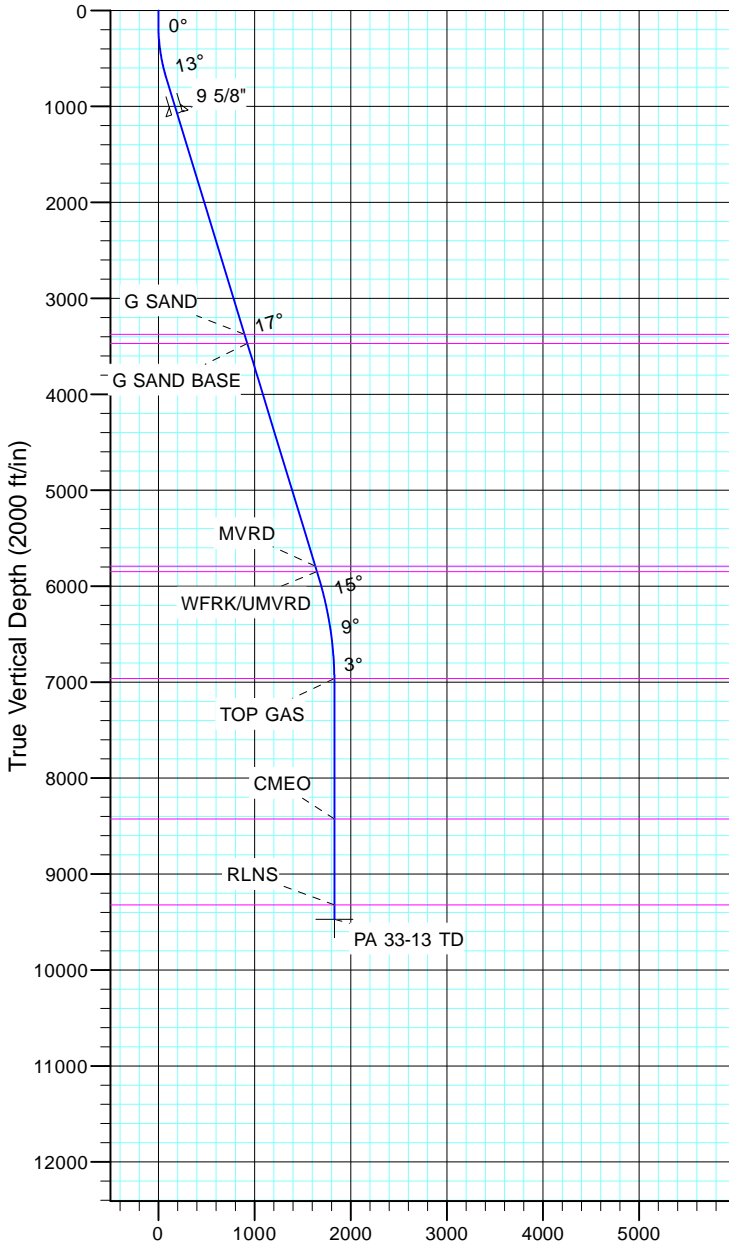


TEP Rocky Mountain LLC
Project: Garfield County, CO NAD83
Site: PA 44-13
Well: PA 33-13
Wellbore: OH
Design: Plan #1



Azimuths to True North
Magnetic North: 11.43°

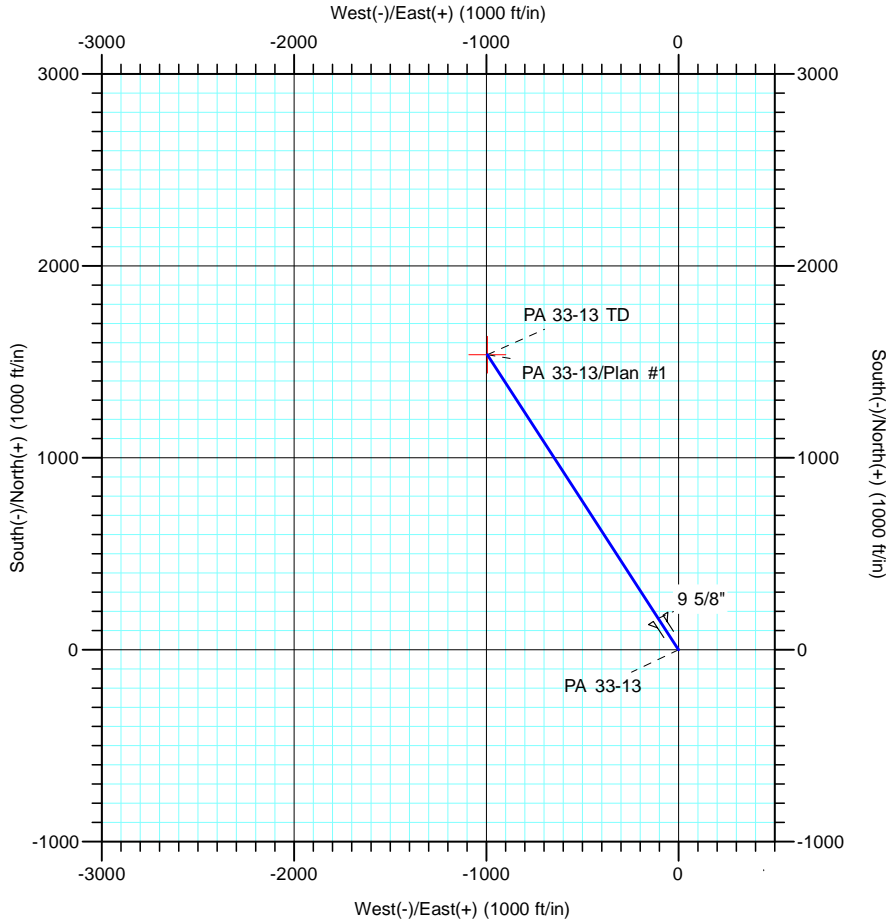
Magnetic Field
Strength: 53064.4nT
Dip Angle: 66.02°
Date: 12/31/2004
Model: IGRF2000



Vertical Section at 327.12° (2000 ft/in)

CASING DETAILS			
TVD	MD	Name	Size
1075.1	1100.0	9 5/8"	9.625

FORMATION TOP DETAILS		
TVDPath	MDPath	Formation
3377.0	3506.4	G SAND
3470.0	3603.6	G SAND BASE
5792.0	6031.0	MVRD
5848.0	6089.6	WFRK/UMVRD
6963.0	7223.3	TOP GAS
8427.0	8687.3	CMEO
9323.0	9583.3	RLNS



DESIGN TARGET DETAILS						
Name	TVD	+N/-S	+E/-W	Northing	Easting	Latitude
PA 33-13 TD	9473.0	1537.7	-994.2	1625360.50	2310275.30	39° 31' 29.642 N

SECTION DETAILS										
Sec	MD	Inc	Azi	TVD	+N/-S	+E/-W	Dleg	TFace	Vsect	Target
1	0.0	0.00	0.00	0.0	0.0	0.0	0.00	0.00	0.0	
2	150.0	0.00	0.00	150.0	0.0	0.0	0.00	0.00	0.0	
3	714.9	16.95	327.12	706.7	69.6	-45.0	3.00	327.12	82.9	
4	6143.6	16.95	327.12	5899.6	1398.4	-904.1	0.00	0.00	1665.3	
5	7273.3	0.00	0.00	7013.0	1537.7	-994.2	1.50	180.00	1831.1	
6	9733.3	0.00	0.00	9473.0	1537.7	-994.2	0.00	0.00	1831.1	PA 33-13 TD