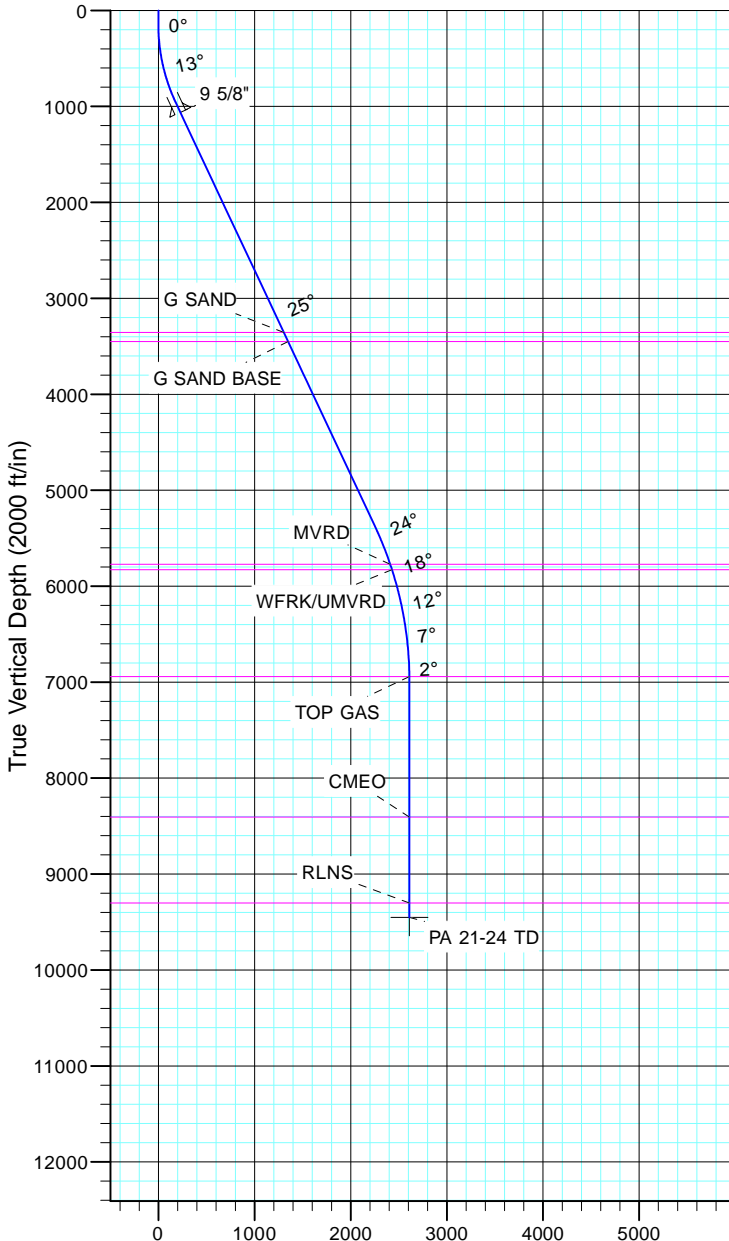


TEP Rocky Mountain LLC  
Project: Garfield County, CO NAD83  
Site: PA 44-13  
Well: PA 21-24  
Wellbore: OH  
Design: Plan #1



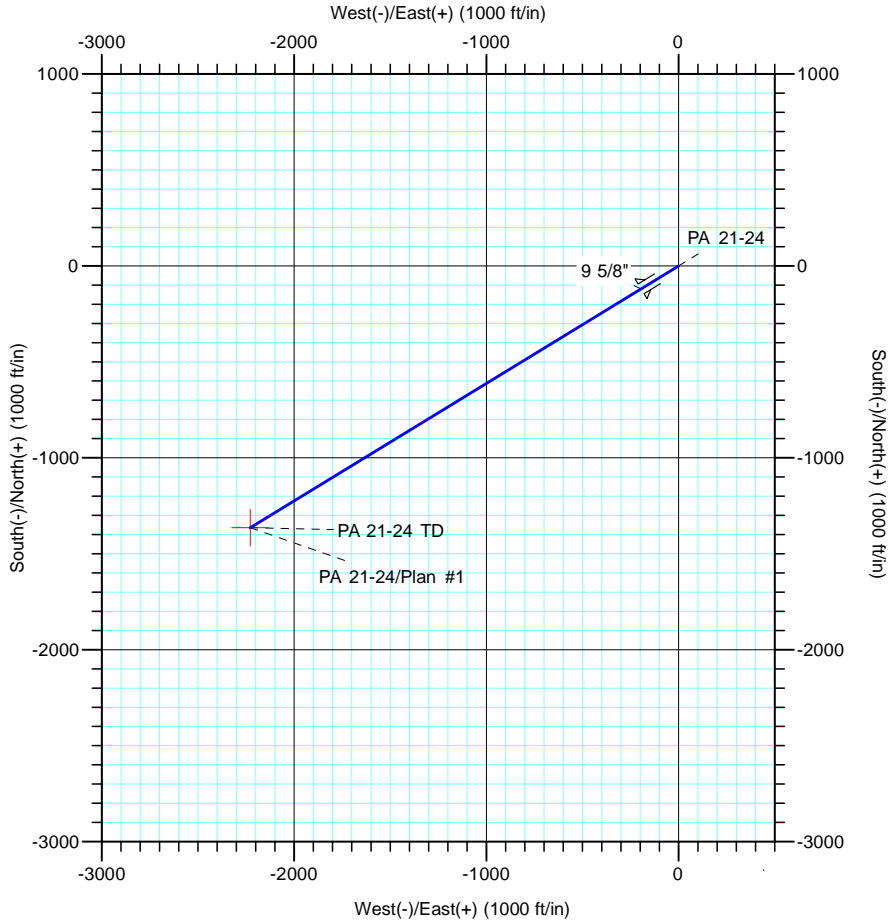
Azimuths to True North  
Magnetic North: 11.43°  
  
Magnetic Field  
Strength: 53064.3nT  
Dip Angle: 66.02°  
Date: 12/31/2004  
Model: IGRF2000



Vertical Section at 238.52° (2000 ft/in)

| CASING DETAILS |        |        |       |
|----------------|--------|--------|-------|
| TVD            | MD     | Name   | Size  |
| 1062.8         | 1100.0 | 9 5/8" | 9.625 |

| FORMATION TOP DETAILS |        |             |
|-----------------------|--------|-------------|
| TVDPath               | MDPath | Formation   |
| 3357.0                | 3634.3 | G SAND      |
| 3450.0                | 3737.0 | G SAND BASE |
| 5772.0                | 6291.4 | MVRD        |
| 5828.0                | 6350.3 | WFRK/UMVRD  |
| 6943.0                | 7484.2 | TOP GAS     |
| 8407.0                | 8948.2 | CMEO        |
| 9303.0                | 9844.2 | RLNS        |



| DESIGN TARGET DETAILS |        |         |         |            |            |                 |                   |
|-----------------------|--------|---------|---------|------------|------------|-----------------|-------------------|
| Name                  | TVD    | +N/-S   | +E/-W   | Northing   | Easting    | Latitude        | Longitude         |
| PA 21-24 TD           | 9453.0 | -1363.9 | -2227.1 | 1622452.20 | 2308986.10 | 39° 31' 0.565 N | 107° 56' 58.924 W |

| SECTION DETAILS |        |       |        |        |         |         |      |        |        |             |
|-----------------|--------|-------|--------|--------|---------|---------|------|--------|--------|-------------|
| Sec             | MD     | Inc   | Azi    | TVD    | +N/-S   | +E/-W   | Dleg | TFace  | Vsect  | Target      |
| 1               | 0.0    | 0.00  | 0.00   | 0.0    | 0.0     | 0.0     | 0.00 | 0.00   | 0.0    |             |
| 2               | 150.0  | 0.00  | 0.00   | 150.0  | 0.0     | 0.0     | 0.00 | 0.00   | 0.0    |             |
| 3               | 987.9  | 25.14 | 238.52 | 961.3  | -94.5   | -154.3  | 3.00 | 238.52 | 180.9  |             |
| 4               | 5858.3 | 25.14 | 238.52 | 5370.4 | -1175.0 | -1918.6 | 0.00 | 0.00   | 2249.8 |             |
| 5               | 7534.2 | 0.00  | 0.00   | 6993.0 | -1363.9 | -2227.1 | 1.50 | 180.00 | 2611.6 |             |
| 6               | 9994.2 | 0.00  | 0.00   | 9453.0 | -1363.9 | -2227.1 | 0.00 | 0.00   | 2611.6 | PA 21-24 TD |